

INNOVATIVE DESIGN FROM RACINE RAILROAD PRODUCTS

**The Ultra Clipper is a self-propelled gasoline-engine driven portable clip applicator and remover used primarily for maintenance operations.**

### Interchangeable Workheads

The Ultra Clipper can be used with a variety of workheads (sold separately) to accommodate many types of resilient fasteners. Change out can easily be done in the field.

### One Machine For Two Jobs

Simultaneously applies/retracts 2 clips on one rail at 8-15 ties per minute. Workhead arms push the preset clip into socket using steady pressure. Clips will not lose holding power due to stressful hammer blows.

### Versatility

Applies / retracts clips on concrete, wood or steel ties with no work head change out. To change machine from apply to retract or retract to apply is as easy as activating one hydraulic lever. Dual controls located on either end of the machine are standard for safe and easy operation. The machine can be used on 90-141 lb rail.

### Ruggedly Designed

Lessens operator fatigue by utilizing an outrigger wheel assembly for stability. Self-propelled hydraulic motor eliminates the operator from pushing the machine on an incline. Outshines the competition for production and durability, producing a long-term savings in maintenance and repair dollars.

### Portability

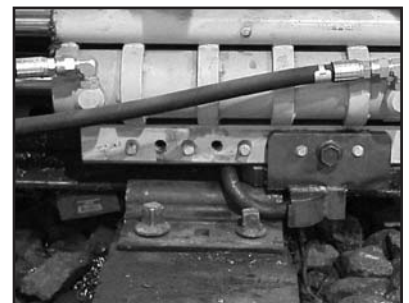
The Ultra Clipper's small size and just 850 lbs allows it to be loaded onto a maintenance cart or pick-up truck for transportation to the work site.



**Ultra Clipper applies/retracts up to 3 different styles of resilient fasteners**



**UC S-Clipper workhead**

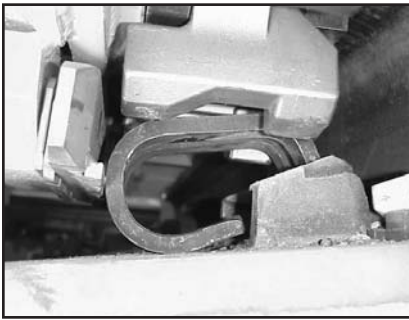


**UC E-Clipper workhead**



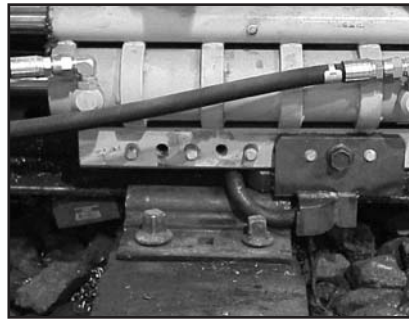
**UC F-Clipper workhead**

## Ultra Clipper (UC) Applies/Retracts Up To 3 Different Styles Of Resilient Fasteners



### UC S-Clipper workhead

- Applies/removes Safelok I®, Shur-Lok® and Air Boss® clips at 12-15 ties per minute.
- During removal, the clip is precisely positioned at the end of socket in preparation for re-installation. No more "flying clips".



### US E-Clipper workhead

- Applies/removes Pandrol® e-series clips at 8-10 ties per minute.
- Remove and apply tools for wood or concrete easily changed with one bolt on either side of the workhead.



### UC F-Clipper workhead

- Applies/removes Pandrol® FastClips® at 12-15 ties per minute.
- During removal, the clip is precisely positioned at the end of socket in preparation for re-installation. No more "flying clips".

### PRODUCT SPECIFICATIONS

- Powered by a Honda GX270, 9-hp engine with electric start.
- Integral frame/hydraulic reservoir with 8-gallon capacity.
- Two stage, hi-lo hydraulic pump with integral sequence valve.
- Able to work on 90 to 141 lb rail.
- Hydraulic power assist travel system.

L = 57"

W = 30.5" (less outrigger)

H = 46" (to lift point)

Weight: 850 lbs.

### OPTIONAL MAINTENANCE CART

- Maintenance cart with turn-table to change rails.



### OTHER OPTIONS AVAILABLE

- Two wheel drive.
- Work lights for night or tunnel projects.
- Please inquire about additional options.

Visit our web site: [www.racinerailroad.com](http://www.racinerailroad.com)

For a complete list of specifications and machine options available, contact  
Racine Railroad Products at: Tel (262) 637-9681 • Fax (262) 637-9069 • email: [custserv@racinerailroad.com](mailto:custserv@racinerailroad.com)  
1524 Frederick Street • Racine, Wisconsin 53404