

NO.	QTY	DESCRIPTION	PART NO.
70	REF	SCHEMATIC, WORKHEAD AIR	720349
71	REF	SCHEMATIC, WORKHEAD HYDRAULIC	720350
72	1	INTERCONNECT, WORKHEAD WIRNG	720351
73	REF	SCHEMATIC, WORKHEADELECTRICAL	720354
74	4	BRACKET, GUIDE ROLLER	778273
75	1	TUBE, VERTICAL	778428
76	1	TUBE, VERTICAL	778429
77	2	TUBE	778430
78	2	CLAMP, TUBE	778432
79	2	CLAMP, TUBE	778492
80	2	ROD	779086
81	4	BRACKET, GUIDE ROLLER	779214
82	1	TUBE	779236
83	1	BRACKET, LEFT CARRIER	781289
84	1	BRACKET, RIGHT CARRIER	781292

NO.	QTY	DESCRIPTION	PART NO.
1	4	SCR, SOC BUT: .25-20 X 1.25	25021681
2	2	PIN, CLEVIS: 1 X 7.19	322010
3	10	WASHER, FLT: 1	380025
4	2	PIN, CLEVIS: 1 X 2.5	394847
5	2	PLATE	395243
6	1	TUBE, CHROME SHORT GUIDE	397670
7	1	TUBE, CHROME LONG GUIDE	397671
8	4	TUBE, CHROME VERTICAL	397756
9	2	BRACKET, LUBE	397805
10	2	BRACKET, BULKHEAD	397885
11	6	FITTING, LUBE: .12 NPT(M)	401987
12	22	NUT, HEX ES JAM: .5-13 HVY	403900
13	10	PIN, COTTER: .19 X 2	403904
14	15	SCR, HEX: .5-13 X 5.5	404182
15	6	SCR, SOC: 8-32 X 1.25	408650
16	12	NUT, HEX ES: .31-18	450578
17	2	FITTING, LUBE: .12 NPT(M) 90°	451214
18	2	BRG, SPHERICAL: 1 ID	455128
19	1	TEE, #8 JIC(M) X #8 JIC(F) X #8 JIC(M)	459873
20	1	ELBOW, 90°: #8 JIC(M) X #8 JIC(M) BULK	459888
21	4	ADAPTER, .12 NPT(F) X #4 JIC(M) BULK	459891
22	8	ELBOW, 90°: #6 JIC(M) X #6 SAE(M)	459907
23	4	UNION, #8 JIC(M) BULK	459928
24	4	UNION, #6 JIC(M) BULK	459929
25	2	ELBOW, 45°: #8 JIC(M) X #8 JIC(F)	459943
26	16	UNION, #4 JIC(M) BULK	460155
27	2	TEE, #4 JIC(M) BULK X #4 JIC(M) X #4 JIC(M)	460393
28	2	ELBOW, 90°: #16 JIC(M) X #16 JIC(M) BULK	460545
29	2	TEE, #16 JIC(M) X #16 JIC(F) X #16 JIC(M)	460573
30	4	ELBOW, 45°: #16 JIC(M) X #16 JIC(F)	460581
31	2	PIN, CLEVIS: 1 X 4.5	464871
32	4	CYLINDER, HYDR: 1.5 X 17	465992
33	2	SENSOR, PROXIMITY	466052
34	2	BOX, DISTRIBUTION: 8 PORT	467485
35	4	NUT, HEX ES JAM: .62-11	467679
36	4	COLLAR, SPLIT: 4 DOUBLE	467871
37	2	CABLE, MINI: 19 PIN(M) X 19 PIN(F) 1.5 FT	469333
38	4	LIGHT, CLEAR	469726
39	1	PLACARD, LEFT DISTRIBUTION BOX	471532
40	1	PLACARD, RIGHT DISTRIBUTION BOX	471533
41	6	NUT, HEX ES: 8-32	491011
42	12	SCR, HEX FLG: .31-18 X 1	491043
43	22	SCR, HEX FLG: .5-13 X 1.75	491047
44	4	SCR, SOC SHLD: .75 X 4	491207
45	4	NUT, HEX ES: .25-20	491232
46	12	WASHER, FLT: .31	491259
47	4	PIN, CLEVIS: 1 X 2.5	491361
48	8	NUT, HEX: .5-13	491362
49	7	NUT, HEX ES JAM: .5-13	491396
50	4	SCR, HEX FLG: .5-13 X 1.5	491484
51	36	NUT, HEX FLG: .5-13	491487
52	4	SCR, SOC SET: .31-18 X .75	491502
53	8	SCR, HEX FLG: .5-13 X 4	491810
54	16	SCR, HEX FLG: .5-13 X 5	491811
55	2	CLAMP, PLATE	714265
56	4	ROLLER, GUIDE	715184
57	1	BOX, LEFT JUNCTION	716813
58	1	BOX, RIGHT JUNCTION	716814
59	1	MANIFOLD, 5 SECTION AIR	718328
60	1	BOX, WORKHEAD LOCK CONTROL	719758
61	2	CARRIER, CABLE/HOSE WIRE RTE CLIP INST	720150
62	1	MECHANISM, RIGHT	720334
63	1	MECHANISM, LEFT	720335
64	1	GUIDE, RIGHT FRONT/BACK	720336
65	1	GUIDE, LEFT FRONT/BACK	720337
66	2	GUIDE, VERTICAL	720338
67	1	JACK, CENTER	720339
68	1	PLUMBING, WORKHEAD HYDRAULIC	720346
69	1	PLUMBING, WORKHEAD AIR: LOCKS	720348

REV	EN	DESCRIPTION	DATE	DRN
1	6336	NEW RELEASE	8-22	PR

DIMENSION TOLERANCES UNLESS OTHERWISE SPECIFIED

LINEAR	.XX±.03	.XXX±.010
ANGULAR	X'±1°	X.X'±.5°

SURFACE FINISH 125/ SMOOTH ALL SHARP EDGES NOT TO EXCEED CLEAN ALL WELDS

THIS PRINT AND ALL INFORMATION WITHIN BELONGS TO RACINE RAILROAD PRODUCTS

**RACINE RAILROAD PRODUCTS**  
RACINE, WISCONSIN USA

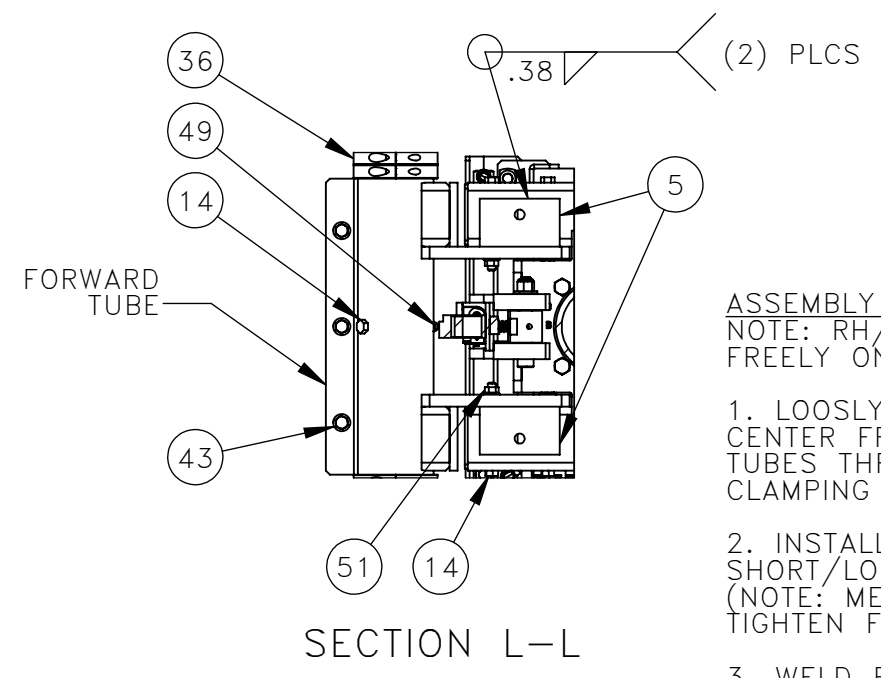
DESCRIPTION  
**WORKHEAD, INSERTER**

MATERIAL SEE BOM

USED ON	913552	SCALE 1:12	DATE 11-26-13
DRN	MSO	CHK	APP
DWG SIZE	D	CATALOG	A

JOB NO RD190012 SHEET 1 OF 1

DWG NO 720333



ASSEMBLY OF CENTER FRAME  
NOTE: RH/LH MECHANISMS ARE TO SLIDE FREELY ON SHORT/LONG GUIDE TUBES

1. LOOSLY ATTACH FORWARD TUBE ONTO CENTER FRAME, INSERT SHORT/LONG GUIDE TUBES THROUGH CENTER FRAME, TIGHTEN CLAMPING FASTENERS.

2. INSTALL RH/LH MECHANISM FRAMES ONTO SHORT/LONG GUIDE TUBES, TEST ALIGNMENT (NOTE: MECHANISM FRAMES SHOULD SLIDE FREELY), TIGHTEN FORWARD TUBE MOUNTING BOLTS.

3. WELD REINFORCEMENT PLATES AS SHOWN (SEE SECTION L-L).