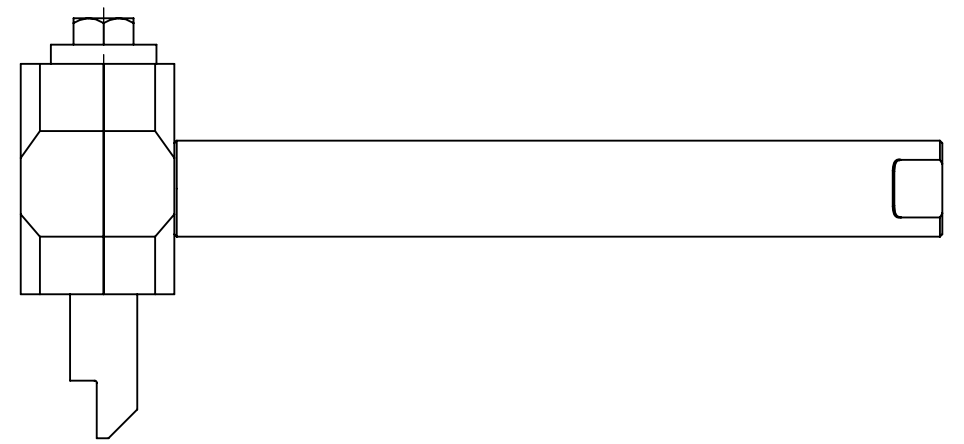


NO.	QTY	DESCRIPTION	PART NO.
1	2	PIN, STOP	315586
2	1	PLATE, STOP	315604
3	1	PLATE, STOP	318198
4	2	SHAFT, GUIDE	318199
5	1	BOLT, SWING	318200
6	2	PIN, SPIROL: .19 X 1.5	407858
7	2	PIN, DOWEL: .25 X 1.25	408601
8	2	WASHER, FLT: .5	454779
9	2	SCR, HEX: .5-20 X 1.25	461853
10	2	PIN, DOWEL: .09 X 1.5 SS	467654
11	1	NUT, HEX ES: .5-13 LT	490743
12	2	SCR, HEX FLG: .5-13 X 1.25	491046



2 KITS REQUIRED PER MACHINE
REPLACES 792967

USED ON:

- 911517
- 912517
- 912548
- 913517
- 913552
- 913539
- 913561
- 914552
- 915574
- 915575
- 932574
- 933574
- 935574

REV	EN	DESCRIPTION	DATE	DRN
1	3886	NEW RELEASE	2-19	MSO
DIMENSION TOLERANCES UNLESS OTHERWISE SPECIFIED				
LINEAR	.XX=±.03	.XXX=±.010		
ANGULAR	X°=±1°	X.X°=±.5°		
SURFACE FINISH		125/	SMOOTH ALL SHARP EDGES	
NOT TO EXCEED			CLEAN ALL WELDS	
THIS PRINT AND ALL INFORMATION WITHIN BELONGS TO RACINE RAILROAD PRODUCTS				
RACINE RAILROAD PRODUCTS				
RACINE, WISCONSIN USA				
DESCRIPTION				
KIT, FIELD JACK FOOT				
MATERIAL				
SEE BOM				
USED ON		SCALE	DATE	
MANY		1:2.5	02-11-19	
DRN	CHK	APP	JOB NO	SHEET
MSO			RD150003	1 OF 1
DWG SIZE		CATALOG	DWG NO	
B		K	793052	