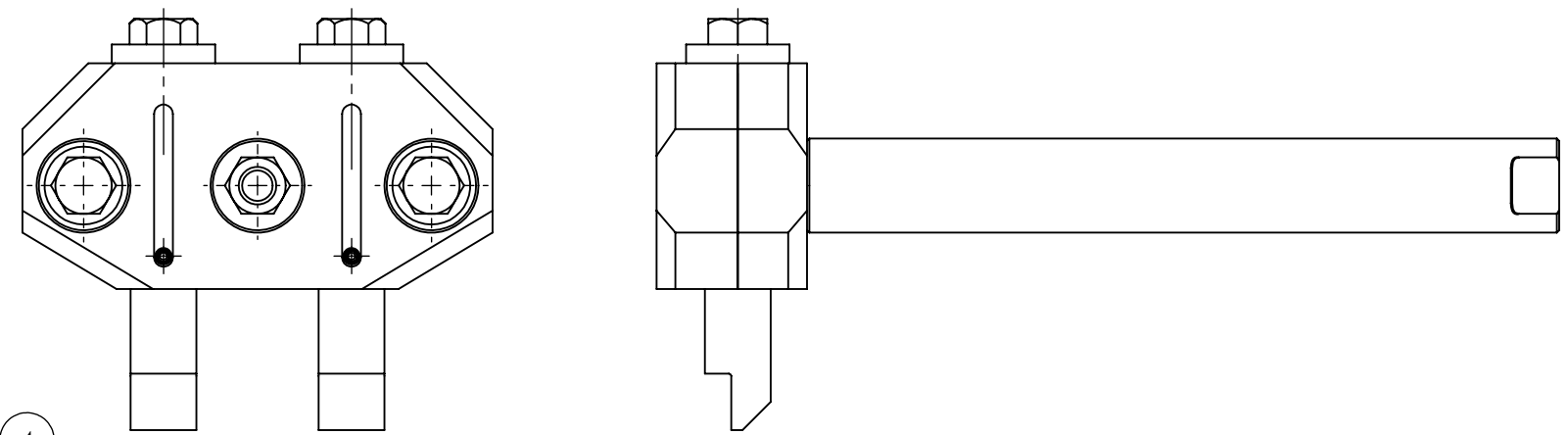


NO.	QTY	DESCRIPTION	PART NO.
1	2	PIN, STOP: SQ	315586
2	1	PLATE, STOP	315604
3	1	PLATE, STOP	318198
4	2	SHAFT, GUIDE	318199
5	1	BOLT, SWING	318200
6	2	PIN, SPIROL: .19 X 1.5	407858
7	2	PIN, DOWEL: .25 X 1.25	408601
8	2	WASHER, FLT: .5	454779
9	2	SCR, HEX: .5-20 X 1.25	461853
10	2	PIN, DOWEL: .09 X 1.5 SS	467654
11	1	NUT, HEX ES: .5-13 LT	490743
12	2	SCR, HEX FLG: .5-13 X 1.25	491046
13	1	INSTRUCTIONS, JACK FOOT SQ STOP PIN UPGRADE KIT	800375

2



2 KITS REQUIRED PER MACHINE
 USED ON:
 911517
 912517
 912548
 913517
 913552
 913539
 913561
 914552
 915574
 915575
 932574
 933574
 935574

REV	EN	DESCRIPTION	DATE	DRN
1	3886	NEW RELEASE	2-19	MSO
2	5967	KIT, FIELD JACK FOOT TO KIT, JACK FOOT STOP PIN:SQ UPGRADE ADD 800375(1)	12-21	PR

DIMENSION TOLERANCES UNLESS OTHERWISE SPECIFIED

LINEAR	.XX=±.03	.XXX=±.010
ANGULAR	X°=±1°	X.X°=±.5°

SURFACE FINISH 125/ ✓ SMOOTH ALL SHARP EDGES
 NOT TO EXCEED CLEAN ALL WELDS

THIS PRINT AND ALL INFORMATION WITHIN BELONGS TO RACINE RAILROAD PRODUCTS

RACINE RAILROAD PRODUCTS
 RACINE, WISCONSIN USA

DESCRIPTION
 KIT, JACK FOOT SQ STOP PIN UPGRADE

MATERIAL
 SEE BOM

USED ON	SCALE	DATE
SEE NOTE	1:2.5	02-11-19

DRN	CHK	APP	JOB NO	SHEET
MSO			RD150003	1 OF 1

DWG SIZE	CATALOG	DWG NO
B	K	793052

2