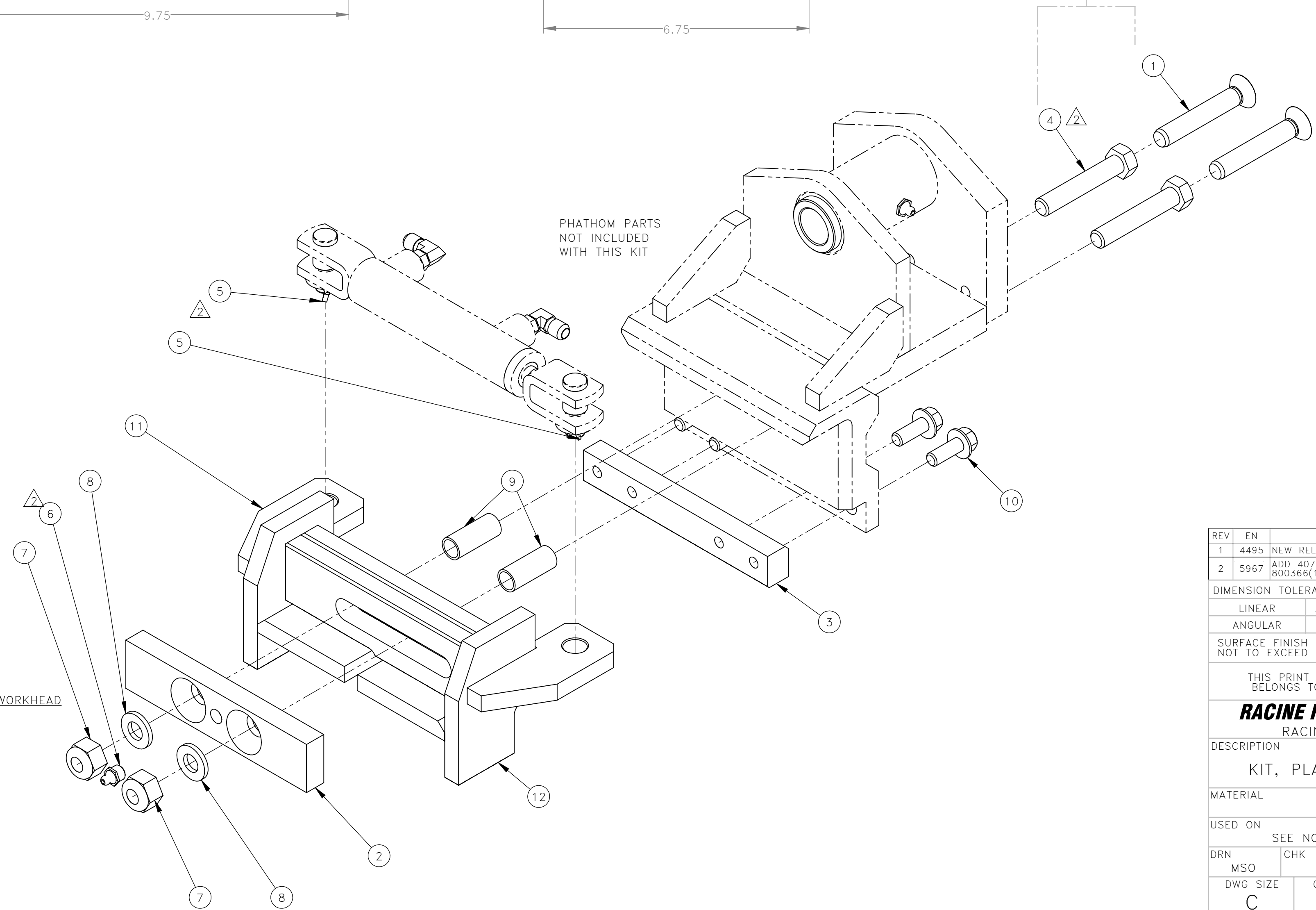


NO.	QTY	DESCRIPTION	PART NO.
1	2	SCR, SOC FLT: .5-13 X 3	311261
2	1	PLATE, LUBE	311610
3	1	PLATE, PUSH	394816
△ 2	4	SCR, HEX: .5-13 X 2.75	400753
△ 2	5	PIN, COTTER: .12 X 1	400900
△ 2	6	FITTING, LUBE: .12 NPT(M)	401987
7	2	NUT, HEX ES JAM: .5-13 HVY	403900
8	2	WASHER, FLT: .5	454817
9	2	BRG, SLV: .5 ID STEEL	469891
10	4	SCR, HEX FLG: .38-16 X 1	491187
11	1	CLAMP, GAUGE	778438
12	1	CLAMP, FIELD	778452
△ 2	13	INSTRUCTIONS, PLATE CLAMP REBUILD KIT	800366

USE EITHER ONE ACCORDING TO WHETHER A C'SINK OR A SLOTTED HOLE IS PRESENT



- 2 KITS REQUIRED PER WORKHEAD
 USED ON:
 911539
 912548
 913539
 913561
 915574
 915575
 931588
 933574
 933588
 935574
 935588
 945588

REV	EN	DESCRIPTION	DATE	DRN
1	4495	NEW RELEASE	10-19	TDM
2	5967	ADD 40753(2)400900(2)401987(1) 800366(1) ECR6441	10-21	PR

DIMENSION TOLERANCES UNLESS OTHERWISE SPECIFIED			
LINEAR	.XX=±.03	.XXX=±.010	
ANGULAR	X°=±1°	X.X°=±.5°	
SURFACE FINISH NOT TO EXCEED	125 ✓	SMOOTH ALL SHARP EDGES CLEAN ALL WELDS	

THIS PRINT AND ALL INFORMATION WITHIN BELONGS TO RACINE RAILROAD PRODUCTS

RACINE RAILROAD PRODUCTS
 RACINE, WISCONSIN USA

DESCRIPTION
 KIT, PLATE CLAMP REBUILD

MATERIAL
 SEE BOM

USED ON
 SEE NOTE

SCALE 1:2
 DATE 10-13-11

DRN MSO
 CHK APP
 JOB NO RD040183
 SHEET 1 OF 1

DWG SIZE C
 CATALOG K
 DWG NO 793060