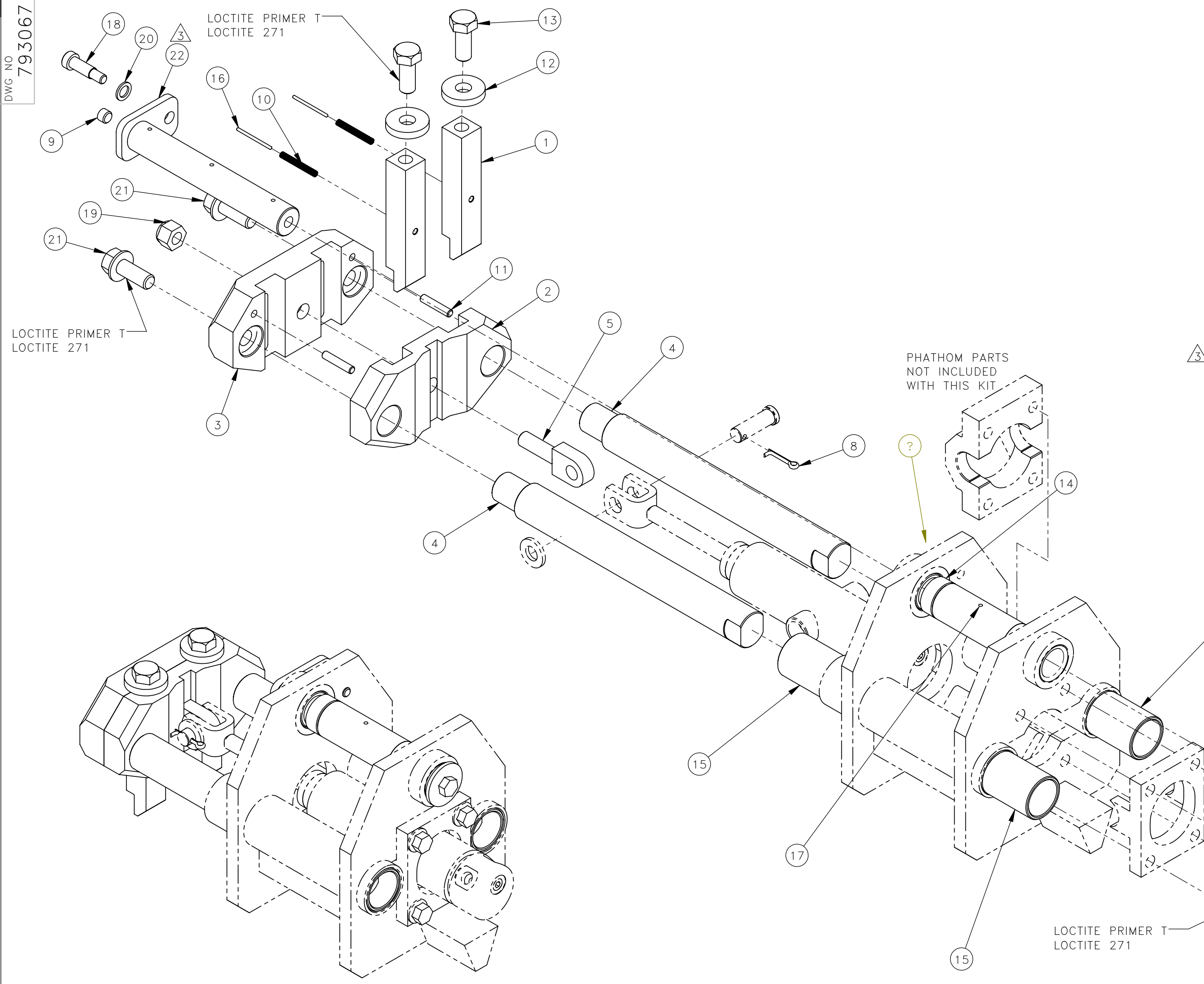


DWG NO
793067



NO.	QTY	DESCRIPTION	PART NO.
1	2	PIN, STOP: SQ	315586
2	1	PLATE, STOP	315604
3	1	PLATE, STOP	318198
4	2	SHAFT, GUIDE	318199
5	1	BOLT, SWING	318200
6	1	WASHER, FLT: .38	380061
7	1	SCR, HEX: .38-16 X .62	400733
8	1	PIN, COTTER: .12 X 1	400900
9	1	PLUG, .12 NPT(M)	400922
10	2	PIN, SPIROL: .19 X 1.5	407858
11	2	PIN, DOWEL: .25 X 1.25	408601
12	2	WASHER, FLT: .5	454779
13	2	SCR, HEX: .5-20 X 1.25	461853
14	2	BRG, SLV: 1 STEEL	465440
15	4	BRG, SLV: 1.25 ID BRONZE	466223
16	2	PIN, DOWEL: .09 X 1.5 SS	467654
17	1	BRG, SLV: 1 ID STEEL	468401
18	1	SCR, SOC SHLD: .38 X .88	468404
19	1	NUT, HEX ES: .5-13 LT	490743
20	1	WASHER, FLT: .38	490959
21	2	SCR, HEX FLG: .5-13 X 1.25	491046
22	1	PIN, TEARDROP	779509
23	1	INSTRUCTIONS, JACK FOOT SQ STOP PIN REBUILD KIT	800364

2 KITS REQUIRED PER MACHINE
 USED ON:
 911517
 912517
 912548
 913517
 913552
 913539
 913561
 914552
 915574
 915575
 932574
 933574
 935574

REV	EN	DESCRIPTION	DATE	DRN
1	4574	NEW RELEASE	10-19	TDM
2	5967	SEE EN FOR DETAILS	12-21	PR
3	6441	DEL 399427(1) 399430(1) ADD 779509(1)	10-22	ASM

DIMENSION TOLERANCES UNLESS OTHERWISE SPECIFIED

LINEAR	.XX=±.03	.XXX=±.010
ANGULAR	X°=±1°	X.X°=±.5°

SURFACE FINISH 125 ✓ SMOOTH ALL SHARP EDGES
 NOT TO EXCEED CLEAN ALL WELDS

THIS PRINT AND ALL INFORMATION WITHIN
 BELONGS TO RACINE RAILROAD PRODUCTS

RACINE RAILROAD PRODUCTS
 RACINE, WISCONSIN USA

DESCRIPTION
 KIT, JACK FOOT SQ STOP PIN REBUILD

MATERIAL
 SEE BOM

USED ON
 SEE NOTE

SCALE 1:2.5
 DATE 07-15-15

DRN MSO
 CHK APP
 JOB NO RD150003
 SHEET 1 OF 1

DWG SIZE C
 CATALOG K
 DWG NO 793067