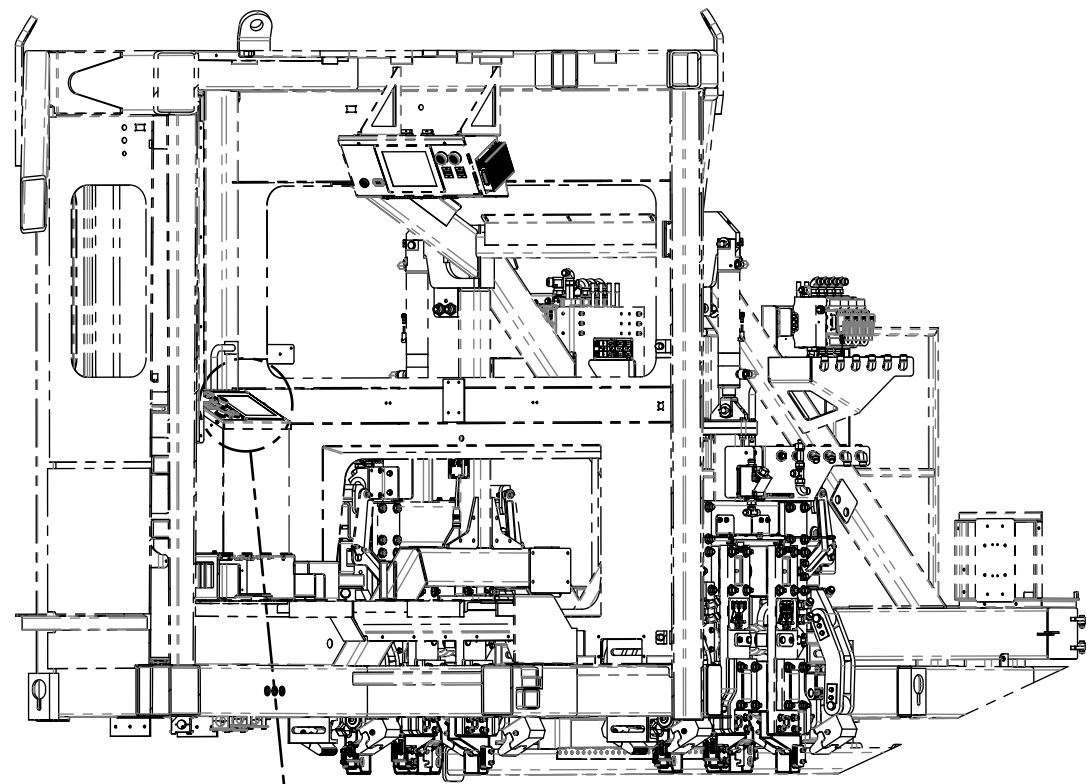
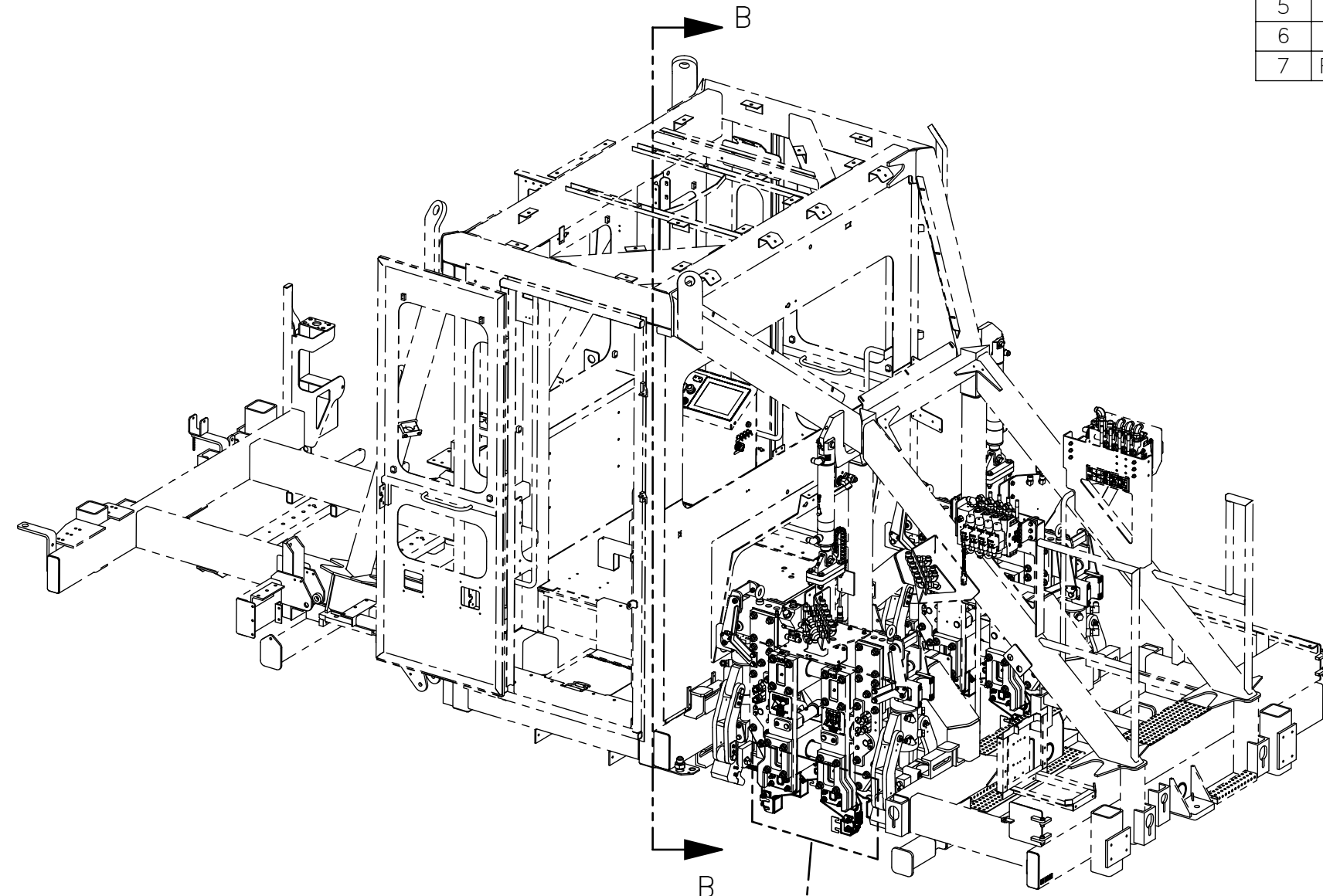


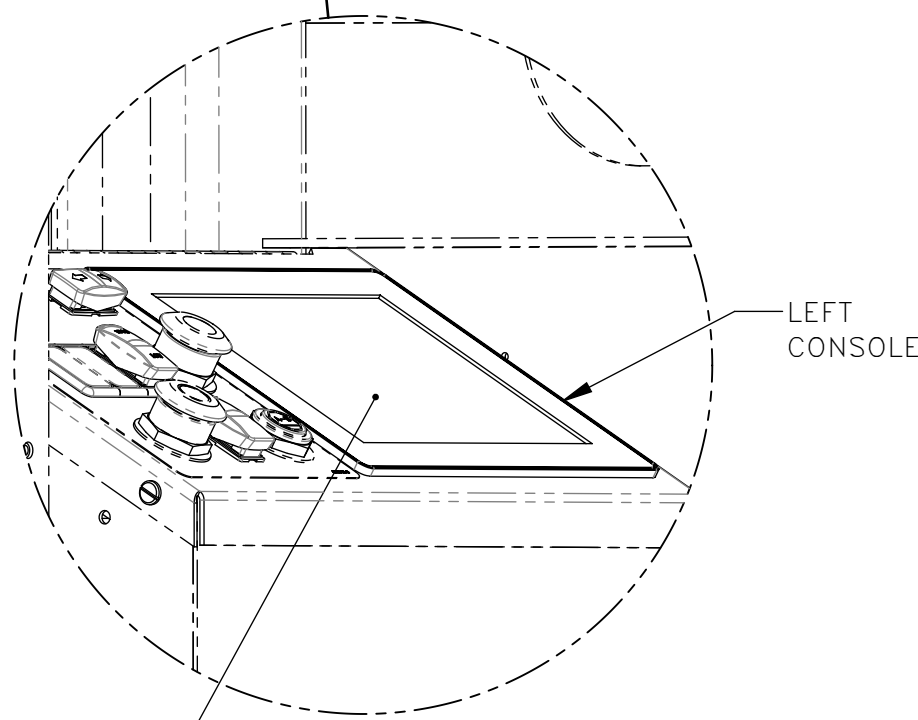
NO.	QTY	DESCRIPTION	PART NO.
1	4	TOOL, LEFT	317895
2	4	TOOL, RIGHT	317896
3	4	HOLDER, TOOL	317910
4	4	HOLDER, TOOL	317911
5	1	MODULE, MD4-10: PROGRAMMED	320895
6	1	DECAL, MD4 DASP	474903
7	REF	INSTRUCTIONS, DASP TOOLS	800258



SECTION B-B
SCALE 1 : 30



DETAIL A
SCALE 1 : 4



DETAIL C
SCALE 1 : 4

LEFT
CONSOLE

- NOTES:
1. DISCONNECT MAIN MACHINE POWER AT BATTERY DISCONNECT.
 2. DISCONNECT CONNECTORS & REMOVE EXISTING DISPLAY.
 3. PLACE PLACARD (6) ON BACK OF EXISTING DISPLAY
 4. INSTALL NEW DISPLAY AND RECONNECT ALL CONNECTORS
 5. RUN AND VERIFY NEW PROGRAM.

REV	EN	DESCRIPTION	DATE	DRN
1	4672	NEW RELEASE	12-19	SAG
2	5043	UPDATED TOOLING PICTORIALLY	6-20	PHR

DIMENSION TOLERANCES UNLESS OTHERWISE SPECIFIED			
LINEAR	.XX=±.03	.XXX=±.010	
ANGULAR	X°=±1°	X.X°=±.5°	
SURFACE FINISH NOT TO EXCEED	125 ✓	SMOOTH ALL SHARP EDGES CLEAN ALL WELDS	

THIS PRINT AND ALL INFORMATION WITHIN BELONGS TO RACINE RAILROAD PRODUCTS

RACINE RAILROAD PRODUCTS
RACINE, WISCONSIN USA

DESCRIPTION
KIT, PLATE SPREAD/ANCHOR SQUEEZE

MATERIAL
SEE BOM

USED ON	SCALE	DATE
	1:32	12-10-19

DRN	CHK	APP	JOB NO	SHEET
SG			RD190005	1 OF 1

DWG SIZE	CATALOG	DWG NO
C	K	793071