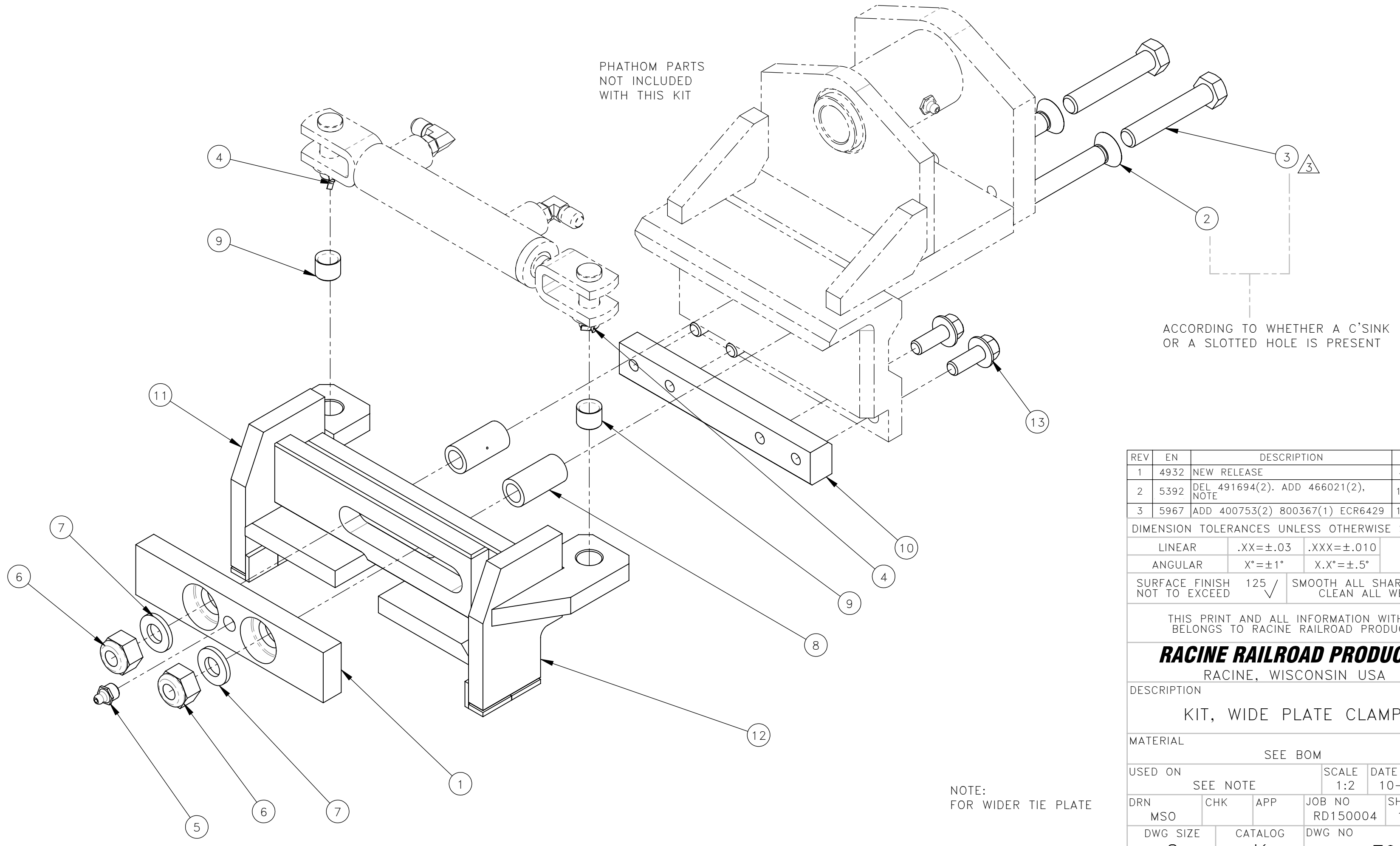


NO.	QTY	DESCRIPTION	PART NO.
1	1	PLATE, LUBE	311259
2	2	SCR, SOC FLT: .5-13 X 3	311261
3	2	SCR, HEX: .5-13 X 2.75	400753
4	2	PIN, COTTER: .12 X 1	400900
5	1	FITTING, LUBE: .12 NPT(M)	401987
6	2	NUT, HEX ES JAM: .5-13 HVY	403900
7	2	WASHER, FLT: .5	454817
8	2	BRG, SLV: .5 ID STEEL	464611
9	2	BRG, SLV: .5 ID STEEL	466021
10	1	PLATE, PUSH	469906
11	1	CLAMP	469914
12	1	CLAMP	469915
13	4	SCR, HEX FLG: .38-16 X 1	491187
14	1	INSTRUCTIONS, WIDE PLATE CLAMP KIT	800367



2 KITS REQUIRED PER WORKHEAD
USED ON:
911539
912548
913539
913561
915574
915575
931588
932574
933574
933588
935574
935588
945588

NOTE:
FOR WIDER TIE PLATE

REV	EN	DESCRIPTION	DATE	DRN
1	4932	NEW RELEASE	4-20	TDM
2	5392	DEL 491694(2). ADD 466021(2). NOTE	11-20	ASM
3	5967	ADD 400753(2) 800367(1) ECR6429	11-21	PR

DIMENSION TOLERANCES UNLESS OTHERWISE SPECIFIED			
LINEAR	.XX=±.03	.XXX=±.010	
ANGULAR	X°=±1°	X.X°=±.5°	
SURFACE FINISH NOT TO EXCEED	125 ✓	SMOOTH ALL SHARP EDGES CLEAN ALL WELDS	

THIS PRINT AND ALL INFORMATION WITHIN
BELONGS TO RACINE RAILROAD PRODUCTS

RACINE RAILROAD PRODUCTS
RACINE, WISCONSIN USA

DESCRIPTION
KIT, WIDE PLATE CLAMP

MATERIAL
SEE BOM

USED ON	SCALE	DATE
SEE NOTE	1:2	10-13-11

DRN	CHK	APP	JOB NO	SHEET
MSO			RD150004	1 OF 1

DWG SIZE	CATALOG	DWG NO
C	K	793080