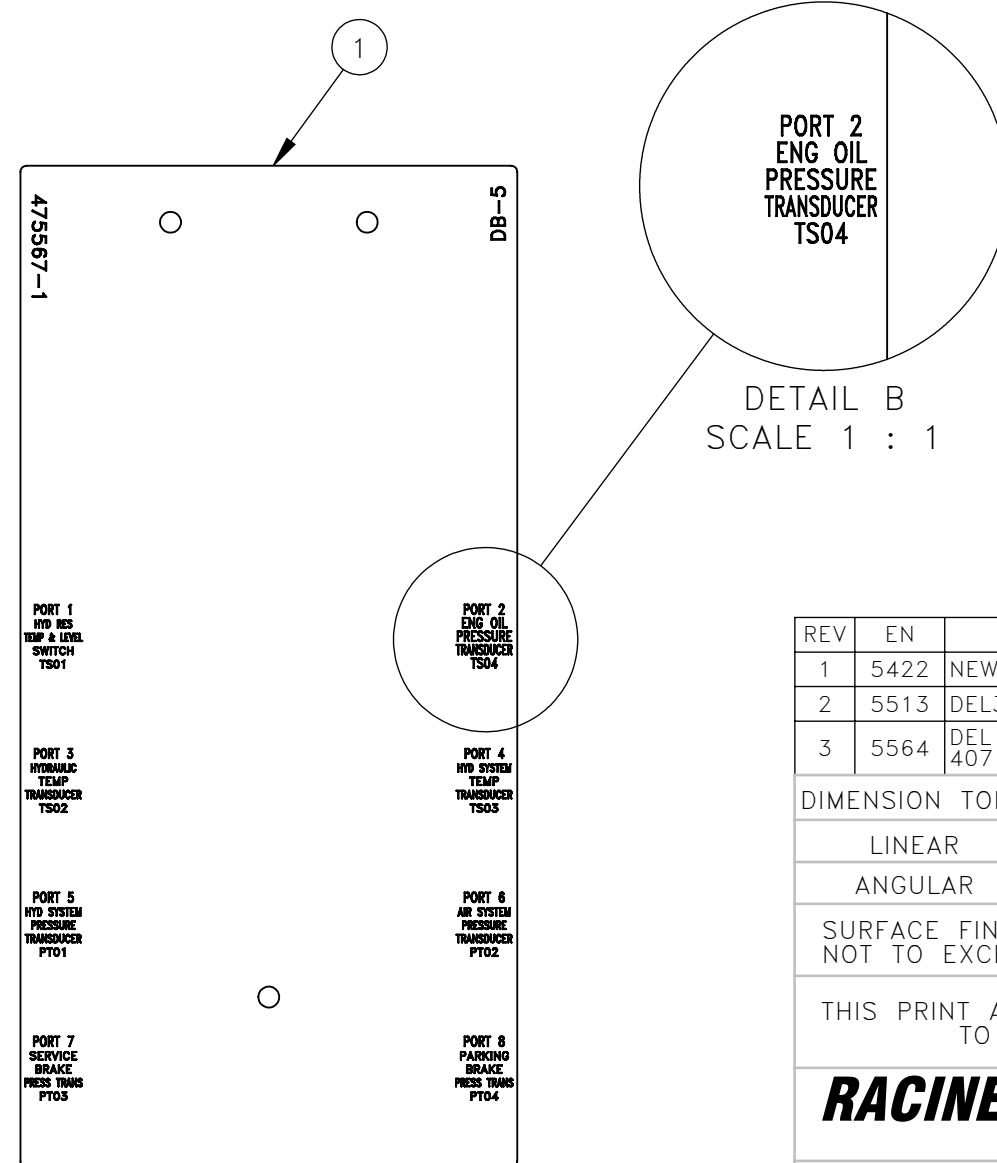


TO PORT 2 ON
DISTRIBUTION BOX 5

NO.	QTY	DESCRIPTION	PART NO.
1	1	ADAPTER, .25 NPT(F) X M18(M)	321975
2	1	O-RING, .644 ID X .087 W	407139
3	1	CABLE, MICRO: 4 PIN(F) 90° X 4 PIN DEUTSCH 4 M	473066
4	1	TRANSDUCER, PRESSURE	475566
5	1	PLACARD, DB-5	475567
6	1	INSTRUCTIONS, ATPI ENGINE OIL PRESSURE SENSING	800340



DB-5
DISTRIBUTION BOX 5

REV	EN	DESCRIPTION	DATE	DRN
1	5422	NEW RELEASE	11-20	PR
2	5513	DEL321975(1), ADD47567)	1-21	PR
3	5564	DEL 475672(1) ADD 321975(1) 407139(1)	2-21	PR

DIMENSION TOLERANCES UNLESS OTHERWISE SPECIFIED

LINEAR	.XX=±.03	.XXX=±.010
ANGULAR	X°=±1°	X.X°=±.5°

SURFACE FINISH 125/✓ NOT TO EXCEED
SMOOTH ALL SHARP EDGES
CLEAN ALL WELDS

THIS PRINT AND ALL INFORMATION WITHIN BELONGS TO RACINE RAILROAD PRODUCTS

RACINE RAILROAD PRODUCTS
RACINE, WISCONSIN USA

DESCRIPTION
KIT, ATPI ENGINE OIL PRESSURE

MATERIAL
SEE BOM

USED ON	SCALE	DATE
944587 935588	1:4	11-20-20

DRN	CHK	APP	JOB NO	SHEET
PR			RD150003	1 OF 1

DWG SIZE	CATALOG	DWG NO
B	K	793095