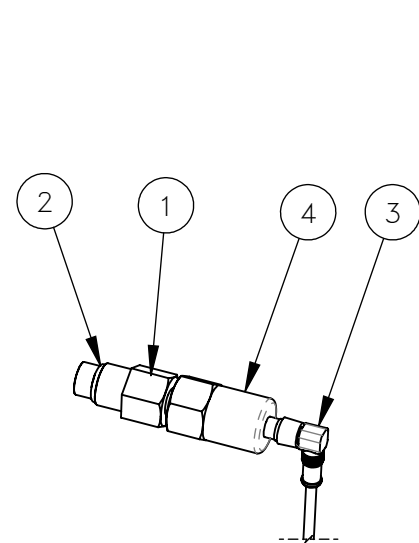
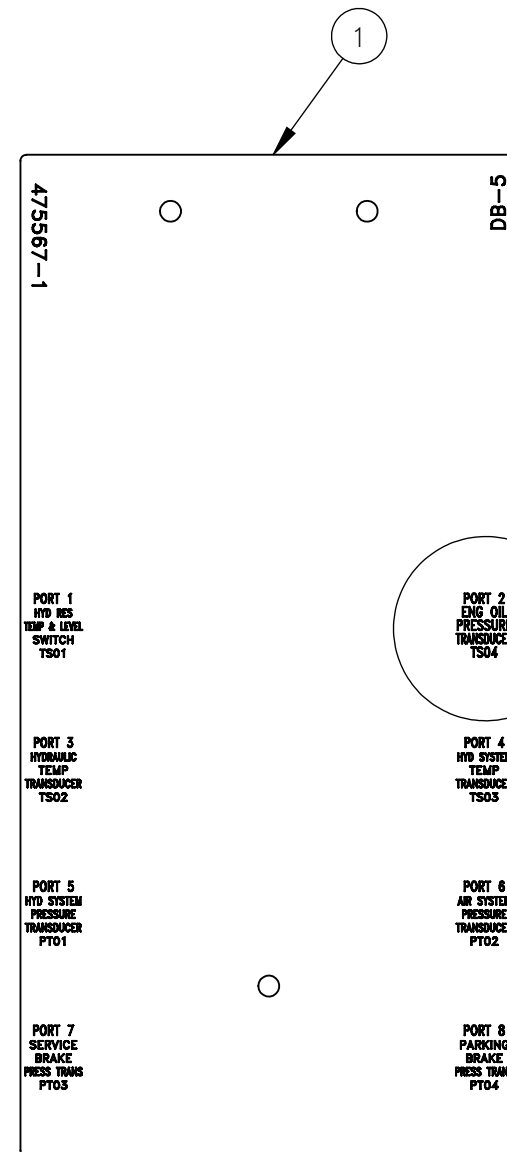


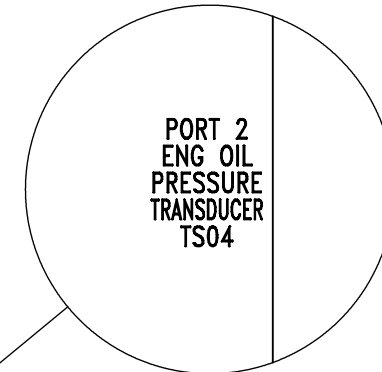
NO.	QTY	DESCRIPTION	PART NO.
1	1	ADAPTER, .25 NPT(F) X M18(M)	321975
2	1	O-RING, .644 ID X .087 W	407139
3	1	CABLE, MICRO: 4 PIN(F) 90° X 4 PIN DEUTSCH 3 M	473024
4	1	TRANSDUCER, PRESSURE	475566
5	1	PLACARD, DB-5	475567
6	1	INSTRUCTIONS, ATPI ENGINE OIL PRESSURE SENSING	800340



TO PORT 2 ON
DISTRIBUTION BOX 5



DB-5
DISTRIBUTION BOX 5



DETAIL B
SCALE 1 : 1

REV	EN	DESCRIPTION	DATE	DRN
1	5564	NEW RELEASE	2-21	PR

DIMENSION TOLERANCES UNLESS OTHERWISE SPECIFIED

LINEAR	.XX=±.03	.XXX=±.010
ANGULAR	X°=±1°	X.X°=±.5°

SURFACE FINISH 125/✓ NOT TO EXCEED
SMOOTH ALL SHARP EDGES
CLEAN ALL WELDS

THIS PRINT AND ALL INFORMATION WITHIN BELONGS TO RACINE RAILROAD PRODUCTS

RACINE RAILROAD PRODUCTS
RACINE, WISCONSIN USA

DESCRIPTION
KIT, BNSF ATPI ENGINE OIL PRESSURE

MATERIAL
SEE BOM

USED ON	932587	SCALE	1:4	DATE	11-20-20
DRN	PR	CHK	APP	JOB NO	RD150003
				SHEET	1 OF 1
DWG SIZE	B	CATALOG	K	DWG NO	793109