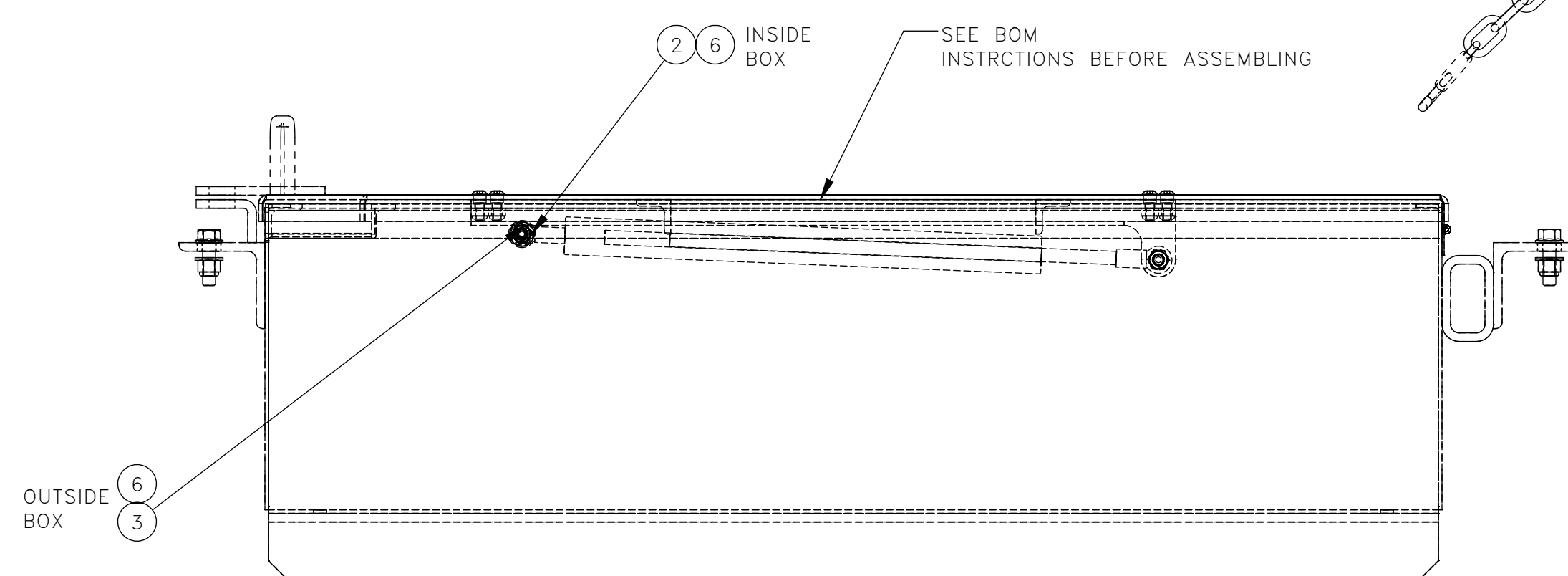
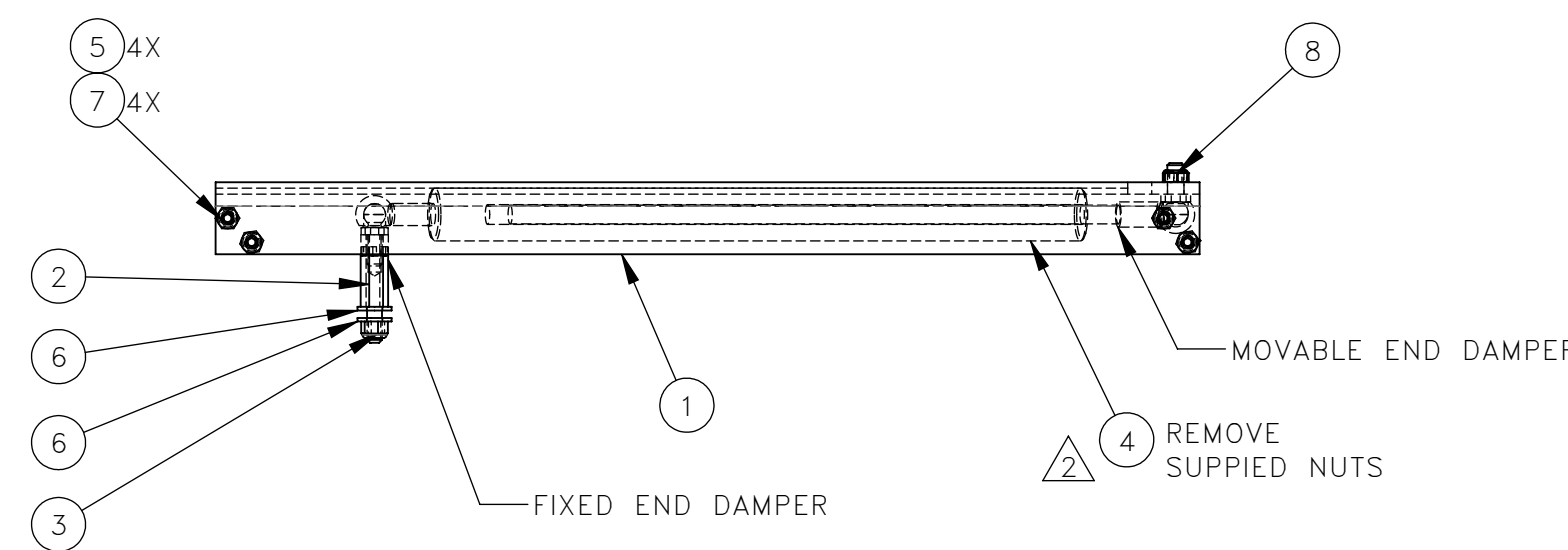
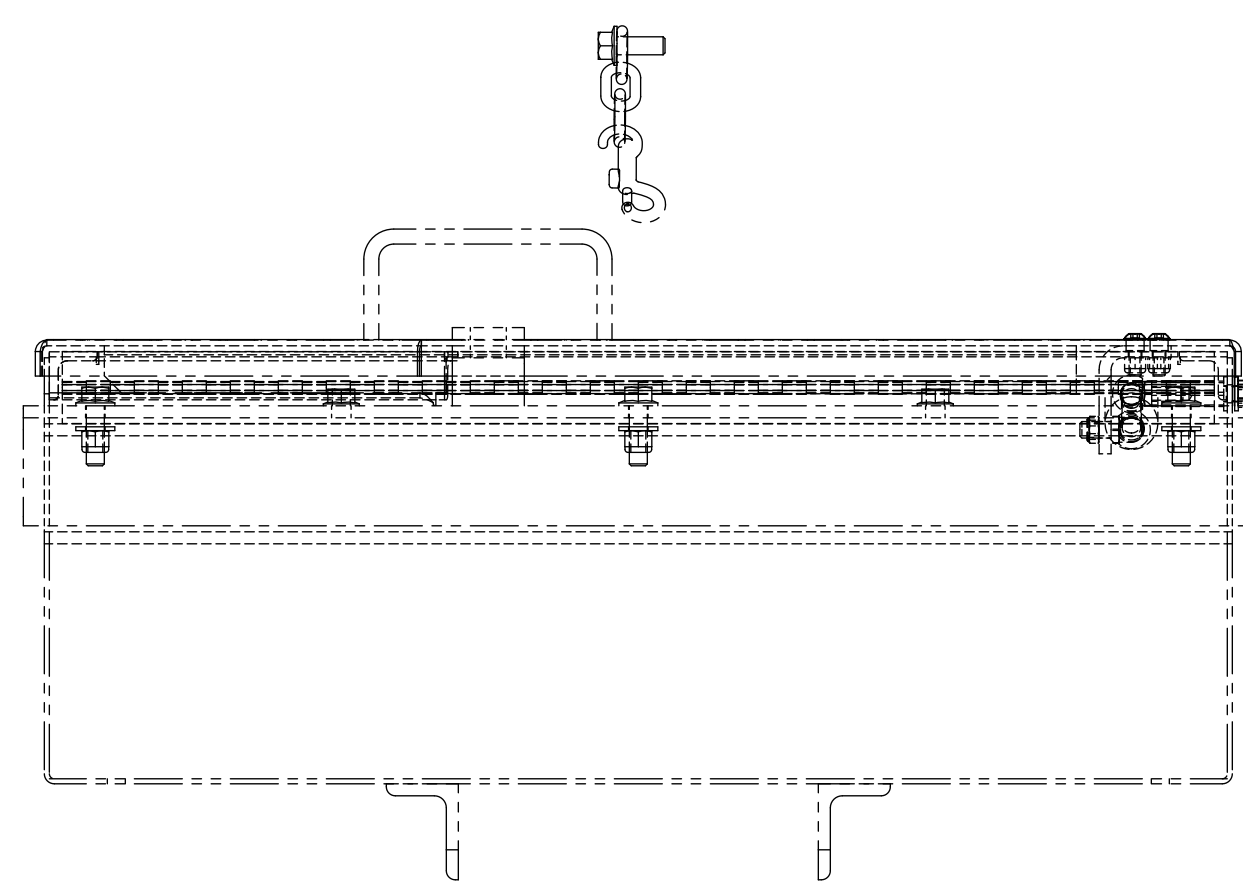
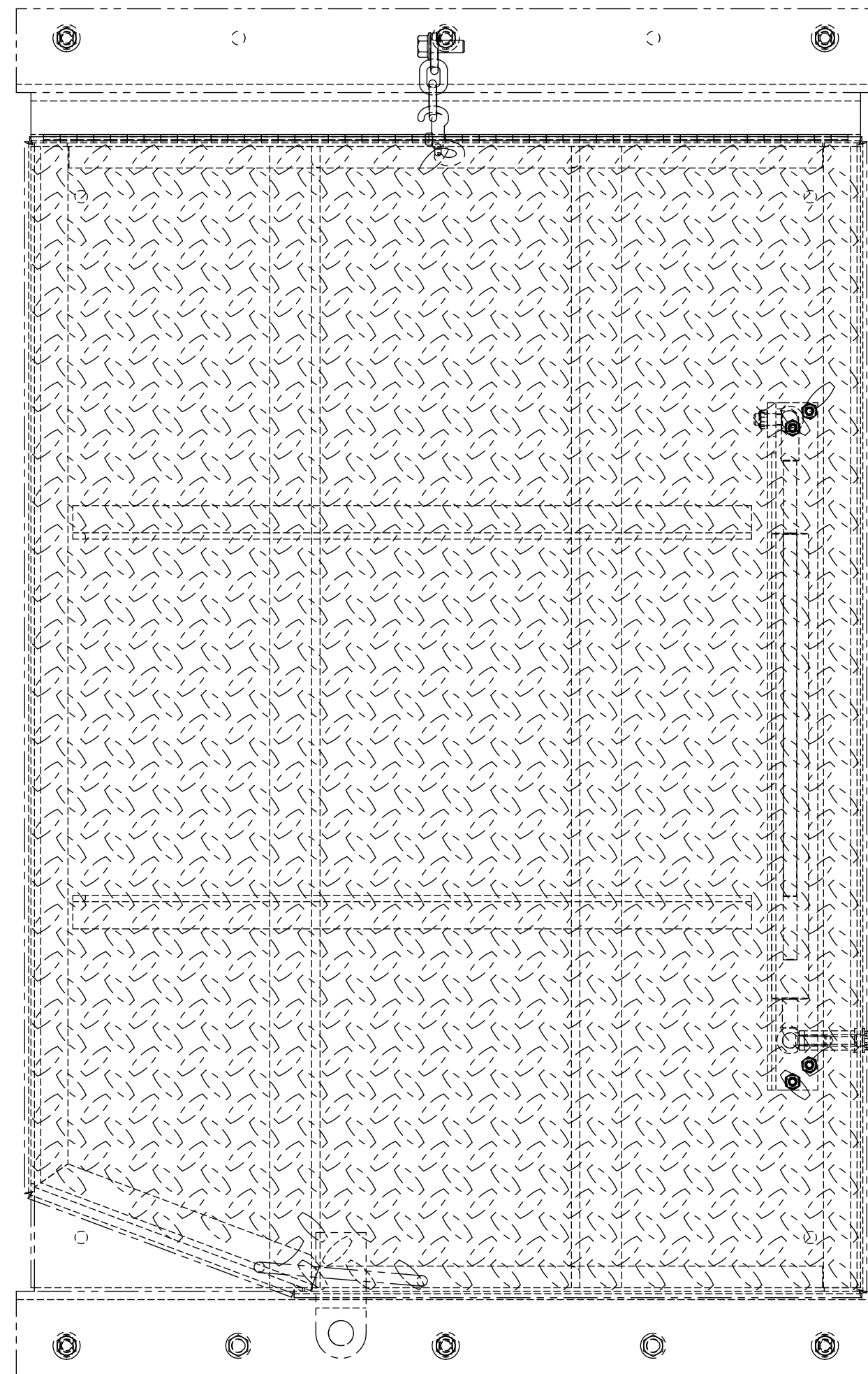


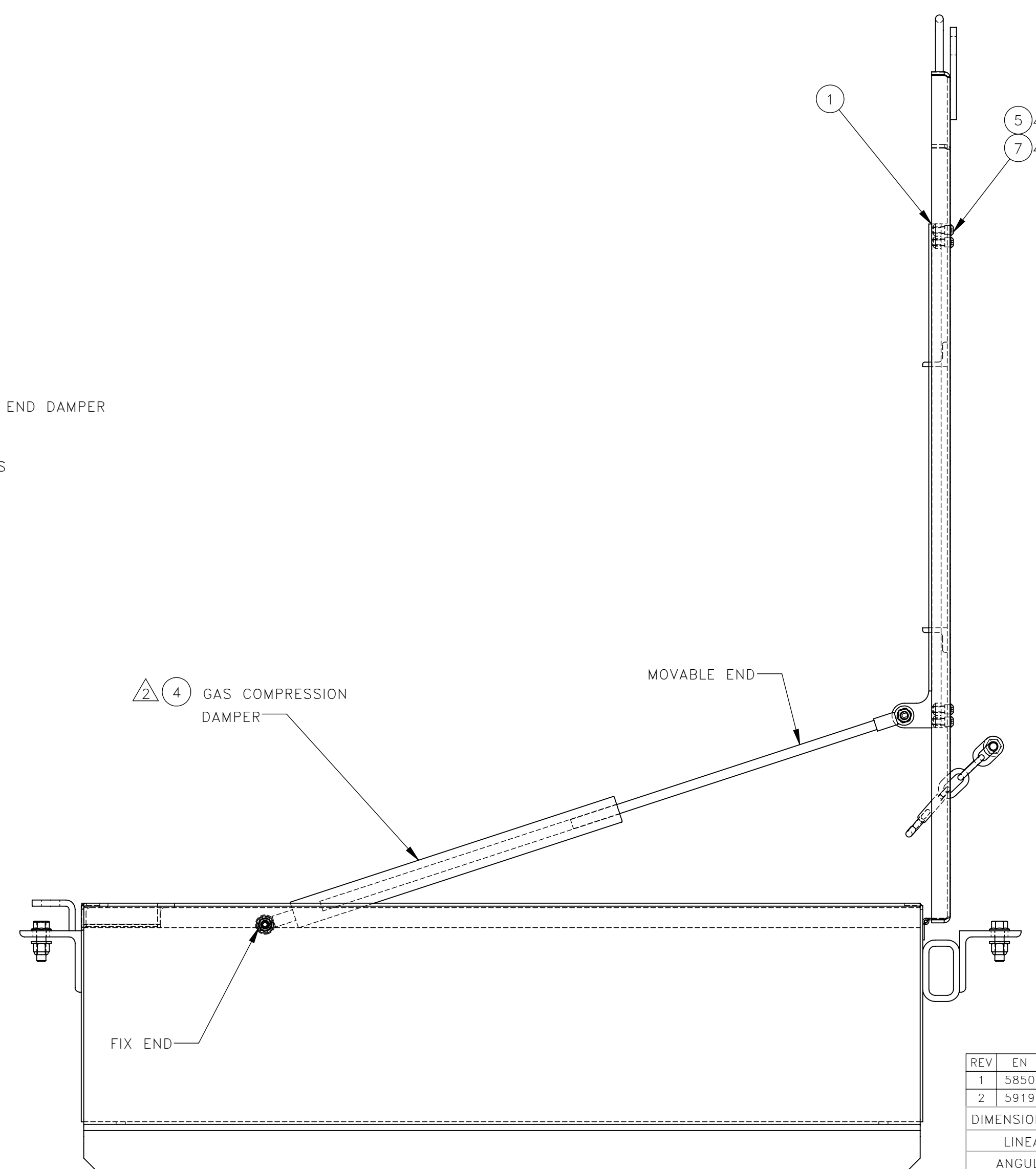
NO.	QTY	DESCRIPTION	PART NO.
1	1	ANGLE, MOUNT	322858
2	1	ROD, HEX .5	322861
3	1	NUT, HEX ES: .31-18	450578
4	1	DAMPER, COMPRESSION	476084
5	4	NUT, HEX ES: .25-20	491232
6	2	WASHER, FLT: .31	491259
7	4	SCR, SOC BUT: .25-20 X .75	491451
8	1	NUT, HEX ES: M8-1.25	501080
9	1	INSTRUCTIONS, TOOLBOX SOFT CLOSE KIT	800356

DWG NO 793117

FRONT OF MACHINE



SIDE VIEW CLOSE LID



SIDE VIEW OPEN LID

REV	EN	DESCRIPTION	DATE	DRN
1	5850	NEW RELEASE	08-21	PR
2	5919	SEE EN FOR DETAILS	9-21	PR

DIMENSION TOLERANCES UNLESS OTHERWISE SPECIFIED			
LINEAR	.XX=±.03	.XXX=±.010	
ANGULAR	X'=±1'	X.X'=±.5'	
SURFACE FINISH 125/		SMOOTH ALL SHARP EDGES NOT TO EXCEED CLEAN ALL WELDS	

THIS PRINT AND ALL INFORMATION WITHIN BELONGS TO RACINE RAILROAD PRODUCTS

RACINE RAILROAD PRODUCTS
RACINE, WISCONSIN USA

DESCRIPTION
KIT, TOOLBOX SOFT CLOSE

MATERIAL
SEE BOM

USED ON	SCALE	DATE
719127	1:4	08-12-21

DRN	CHK	APP	JOB NO	SHEET
PR			RD190005	1 OF 1

DWG SIZE	CATALOG	DWG NO
D	K	793117