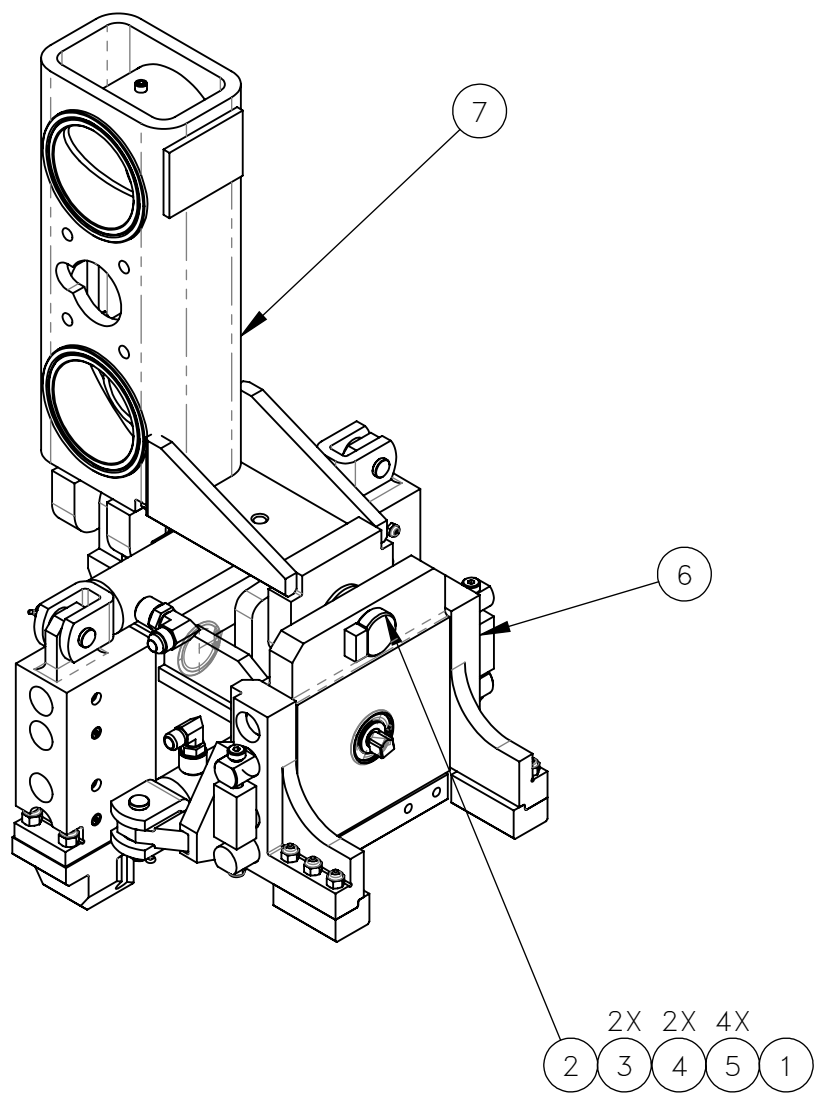
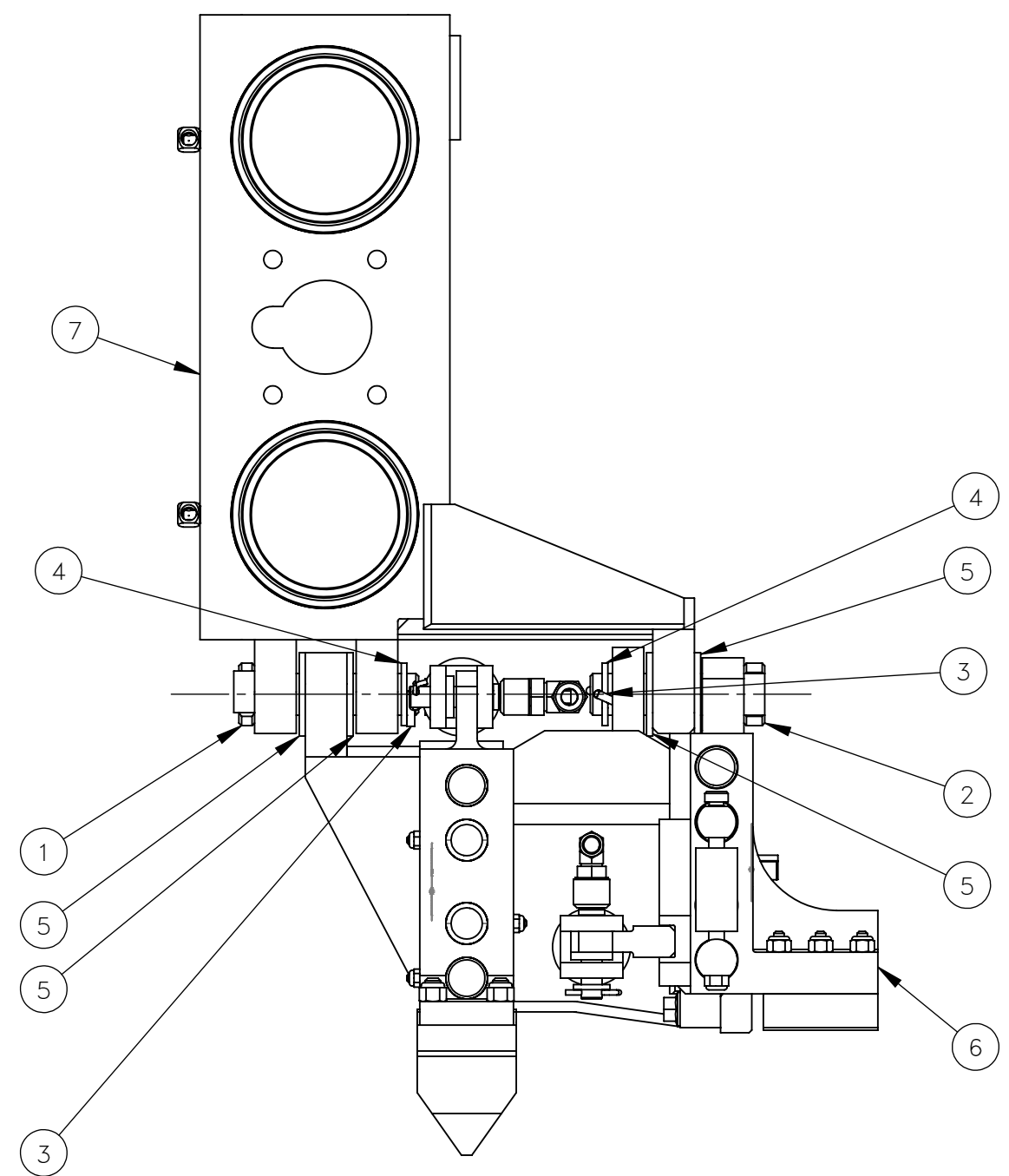


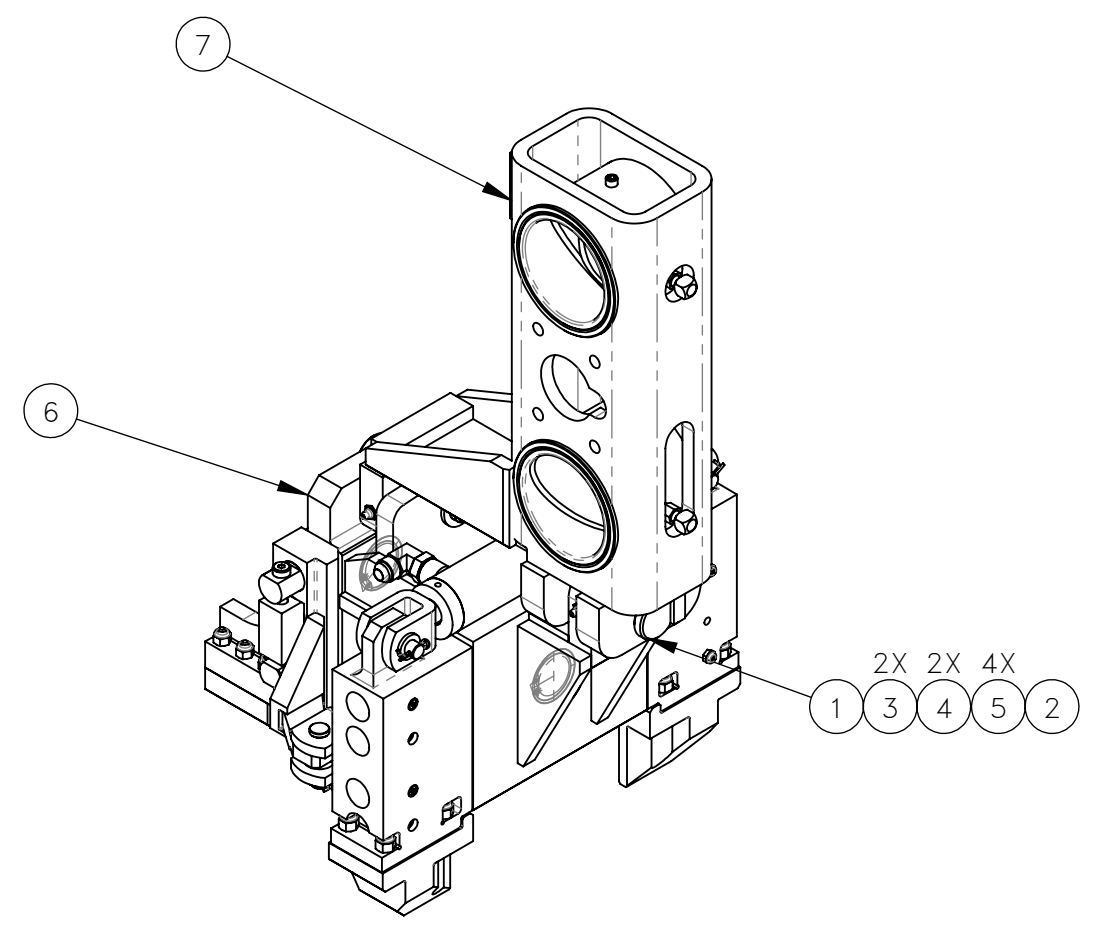
NO.	QTY	DESCRIPTION	PART NO.
1	2	PIN, CLEVIS: 1 X 3.75	322842
2	2	PIN, CLEVIS: 1 X 3.688	322843
3	4	PIN, COTTER: .19 X 2	403904
4	4	WASHER, FLT: 1	491551
5	8	WASHER, FLT: 1	491597
6	2	CLAMP, PLATE	720136
7	2	GUIDE, FRONT/BACK	720143
8	1	INSTRUCTIONS, WORKHEAD TOOLING KIT	800357



FRONT/LEFT GUIDE AND PLATE CLAMPS
SEE SUB ASSEMBLIES & SEE INSTRUCTIONS
FOR ASSEMBLY



VIEW SHOWS HARDWARE REQUIRED PER SIDE



REV	EN	DESCRIPTION	DATE	DRN
1	5817	NEW RELEASE	8-21	PR

DIMENSION TOLERANCES UNLESS OTHERWISE SPECIFIED

LINEAR	.XX=±.03	.XXX=±.010
ANGULAR	X°=±1°	X.X°=±.5°

SURFACE FINISH 125 / ✓ SMOOTH ALL SHARP EDGES
NOT TO EXCEED CLEAN ALL WELDS

THIS PRINT AND ALL INFORMATION WITHIN
BELONGS TO RACINE RAILROAD PRODUCTS

RACINE RAILROAD PRODUCTS
RACINE, WISCONSIN USA

DESCRIPTION
KIT, WORKHEAD TOOLING

MATERIAL
SEE BOM

USED ON	SCALE	DATE
932587	1:6	08-18-21

DRN	CHK	APP	JOB NO	SHEET
PR			RD150003	1 OF 1

DWG SIZE	CATALOG	DWG NO
C	K	793118