

793125

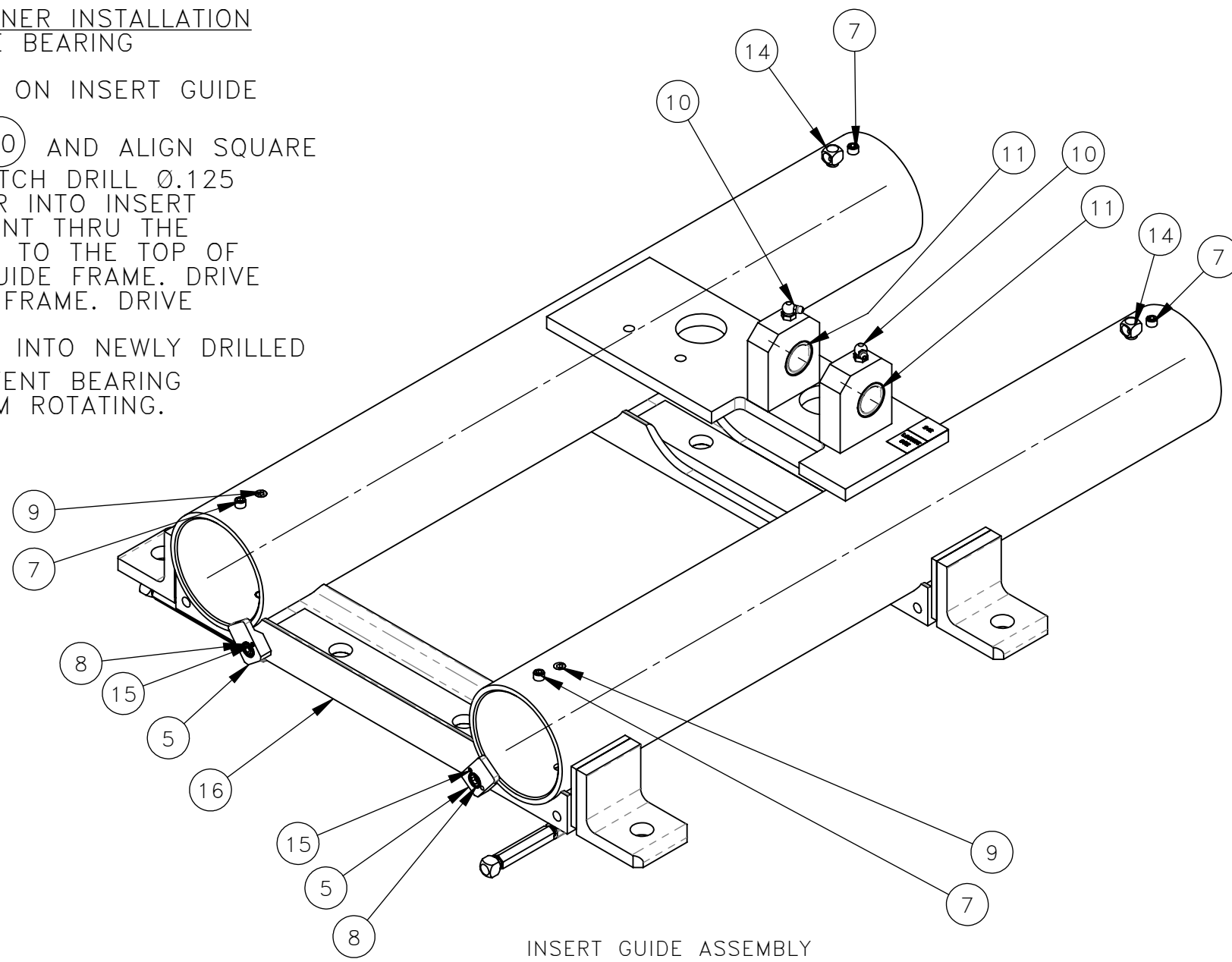
DWG NO

**BEARING RETAINER INSTALLATION  
MOUNT SLEEVE BEARING**

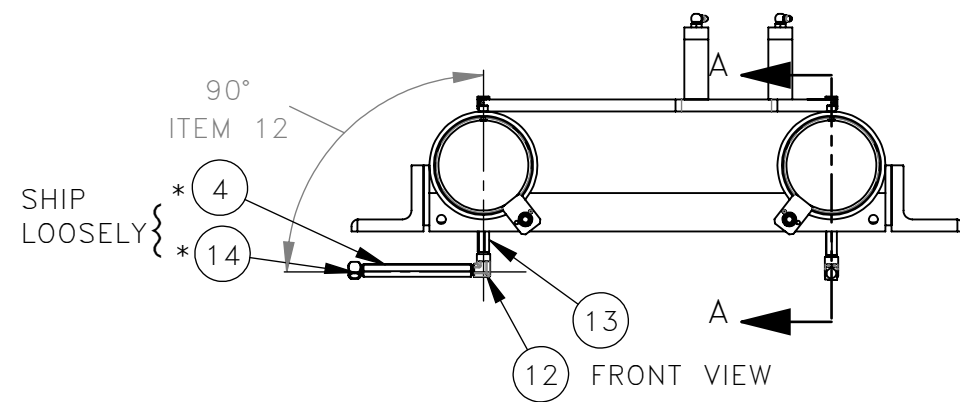
RETAINER (5) ON INSERT GUIDE

FRAME END (10) AND ALIGN SQUARE TO SHAFT. MATCH DRILL Ø.125 THRU RETAINER INTO INSERT GUIDE WELDMENT THRU THE HOLE CLOSEST TO THE TOP OF THE INSERT GUIDE FRAME. DRIVE INSERT GUIDE FRAME. DRIVE

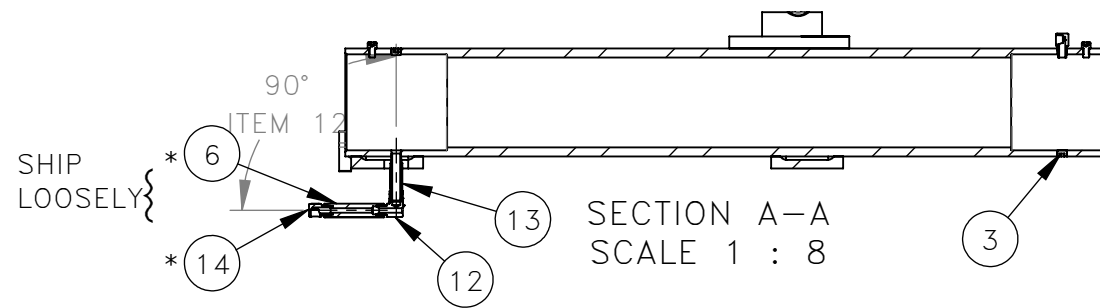
ROLL PIN (15) INTO NEWLY DRILLED HOLE TO PREVENT BEARING RETAINER FROM ROTATING.



INSERT GUIDE ASSEMBLY  
ISO VIEW



FRONT VIEW



SECTION A-A  
SCALE 1 : 8

NO.	QTY	DESCRIPTION	PART NO.
1	AR	LOCTITE, 242	008806
2	AR	LOCTITE, 592	008807
3	2	PLUG, .12 NPT(M) FLUSH	25005177
* 4	1	NIPPLE, HEX: .12 NPT X 4.5	311433
5	2	RETAINER, BEARING	397767
* 6	1	NIPPLE, HEX: .12 NPT X 2.5	397973
7	4	SCR, SOC: .25-28 X .38	400786
8	2	SCR, SOC: .31-24 X .62	400802
9	2	PLUG, .12 NPT(M)	400922
10	2	FITTING, LUBE: .12 NPT(M) 90°	451214
11	2	BRG, SLV: 1 ID STEEL	466025
12	2	ELBOW, 90°: .12 NPT(M) X .12 NPT(F)	467671
13	2	NIPPLE, HEX: .12 NPT X 2	467672
* 14	4	ELBOW, 90°: .12 NPT(M) X .12 NPT(F)	472473
15	2	PIN, SPIROL: .12 X 1	490696
16	1	GUIDE, INSERT	780840
17	1	INSTRUCTIONS, LEFT OR RIGHT INSERT GUIDE KIT	800362

NOTE: "\*" MARKED ITEMS ARE TO BE SHIPPED LOOSELY (SEE FRONT VIEW & SECTION A-A).

REV	EN	DESCRIPTION	DATE	DRN
1	5927	NEW RELEASE	9-21	PR
DIMENSION TOLERANCES UNLESS OTHERWISE SPECIFIED				
LINEAR	.XX=±.03	.XXX=±.010		
ANGULAR	X°=±1°	X.X°=±.5°		
SURFACE FINISH		125/✓	SMOOTH ALL SHARP EDGES CLEAN ALL WELDS	
NOT TO EXCEED				
THIS PRINT AND ALL INFORMATION WITHIN BELONGS TO RACINE RAILROAD PRODUCTS				
<b>RACINE RAILROAD PRODUCTS</b>				
RACINE, WISCONSIN USA				
DESCRIPTION				
KIT, LEFT OR RIGHT INSERT GUIDE				
MATERIAL				
SEE BOM				
USED ON		SCALE	DATE	
ATPI SEE NOTE		1:4	09-30-21	
DRN	CHK	APP	JOB NO	SHEET
PR			RD150003	1 OF 1
DWG SIZE		CATALOG	DWG NO	
B		K	793125	

2 KITS REQUIRED PER MACHINE USED ON:

TIER 3:	TIER 4:
915574	930587
915575	931587
932574	931588
933574	932587
935574	935588/945588