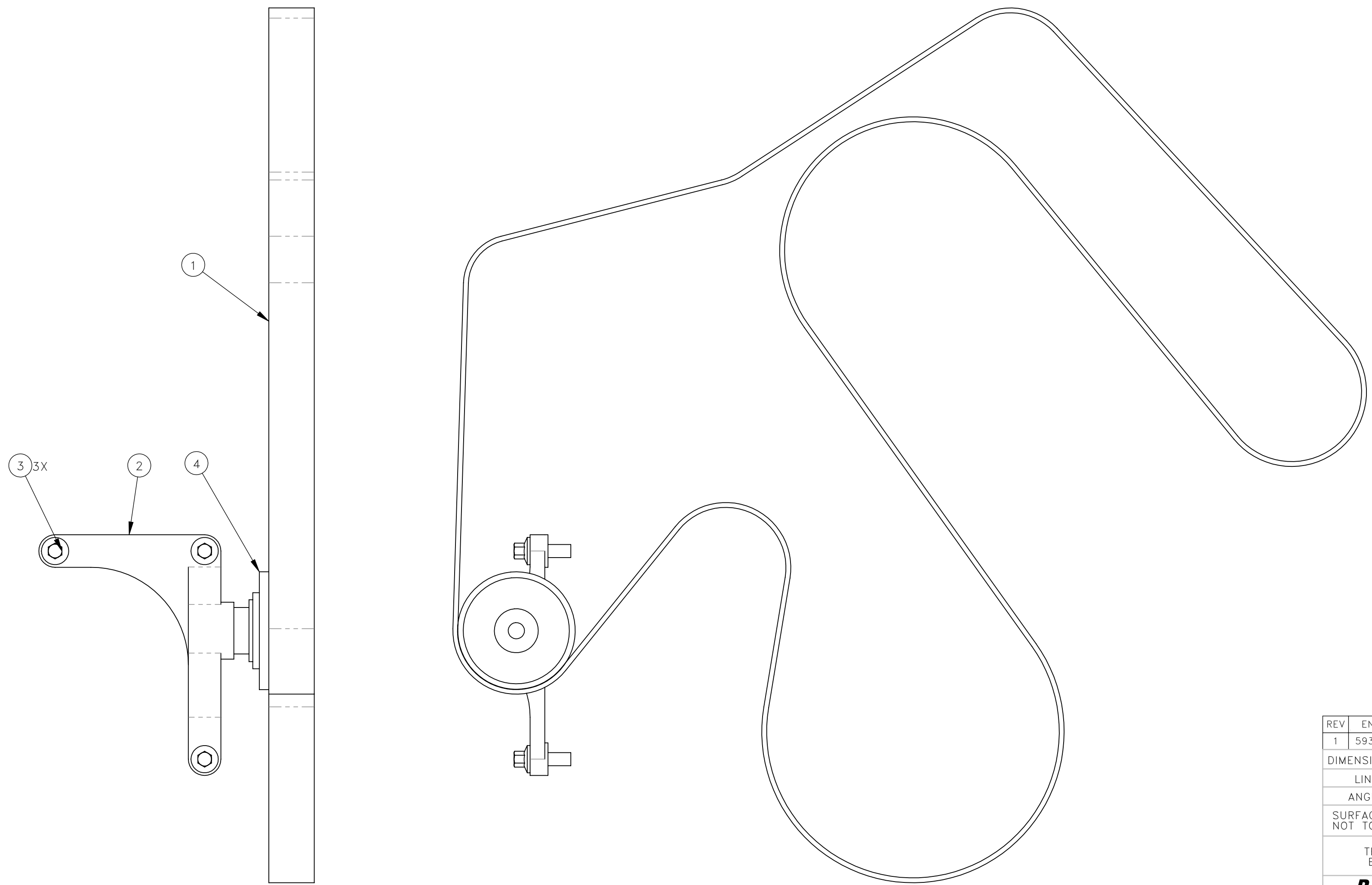


NO.	QTY	DESCRIPTION	PART NO.
1	1	BELT, SERPENTINE	476036
2	1	SUPPORT: IDLER PULLEY	476097
3	3	SCR, HEX FLG: M8-1.25 X 25	476109
4	1	PULLEY, IDLER: V-RIBBED	476110
5	1	INSTRUCTIONS, CUMMINS 3.8 A/C COMPRESSOR DELETE KIT	800363



REV	EN	DESCRIPTION	DATE	DRN
1	5939	NEW RELEASE	10-21	PR
DIMENSION TOLERANCES UNLESS OTHERWISE SPECIFIED				
LINEAR		.XX=±.03	.XXX=±.010	
ANGULAR		X°=±1°	X.X°=±.5°	
SURFACE FINISH NOT TO EXCEED		125 ✓	SMOOTH ALL SHARP EDGES CLEAN ALL WELDS	
THIS PRINT AND ALL INFORMATION WITHIN BELONGS TO RACINE RAILROAD PRODUCTS				
RACINE RAILROAD PRODUCTS				
RACINE, WISCONSIN USA				
DESCRIPTION				
KIT, CUMMINS 3.8 A/C COMP. ALTERATION				
MATERIAL				
SEE BOM				
USED ON		SCALE	DATE	
935588		1:2	10-04-21	
DRN	CHK	APP	JOB NO	SHEET
PR			RD150003	1 OF 1
DWG SIZE	CATALOG	DWG NO		
C	A	793126		