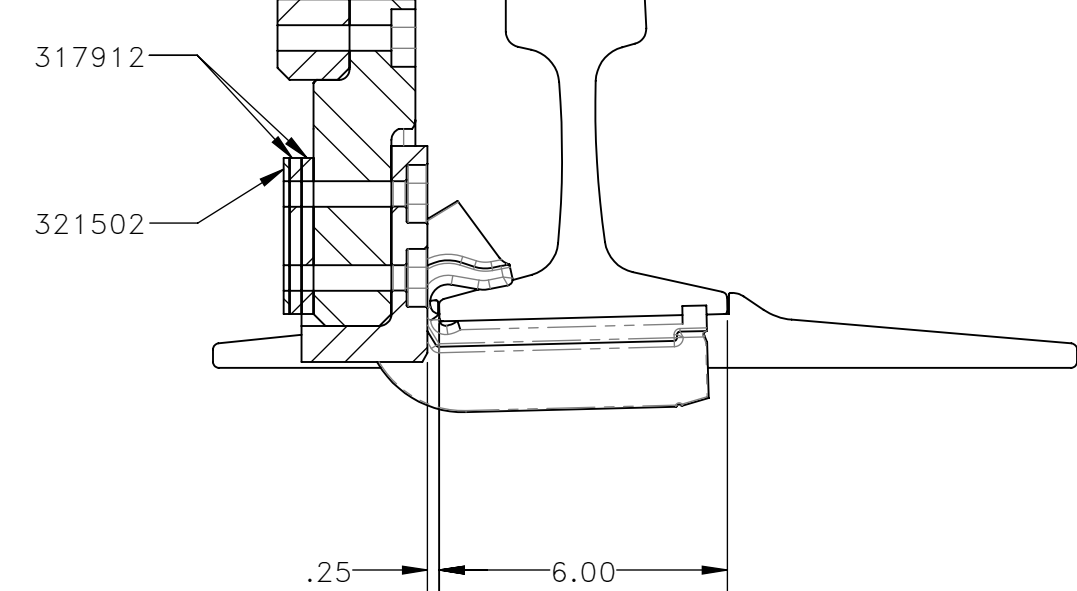
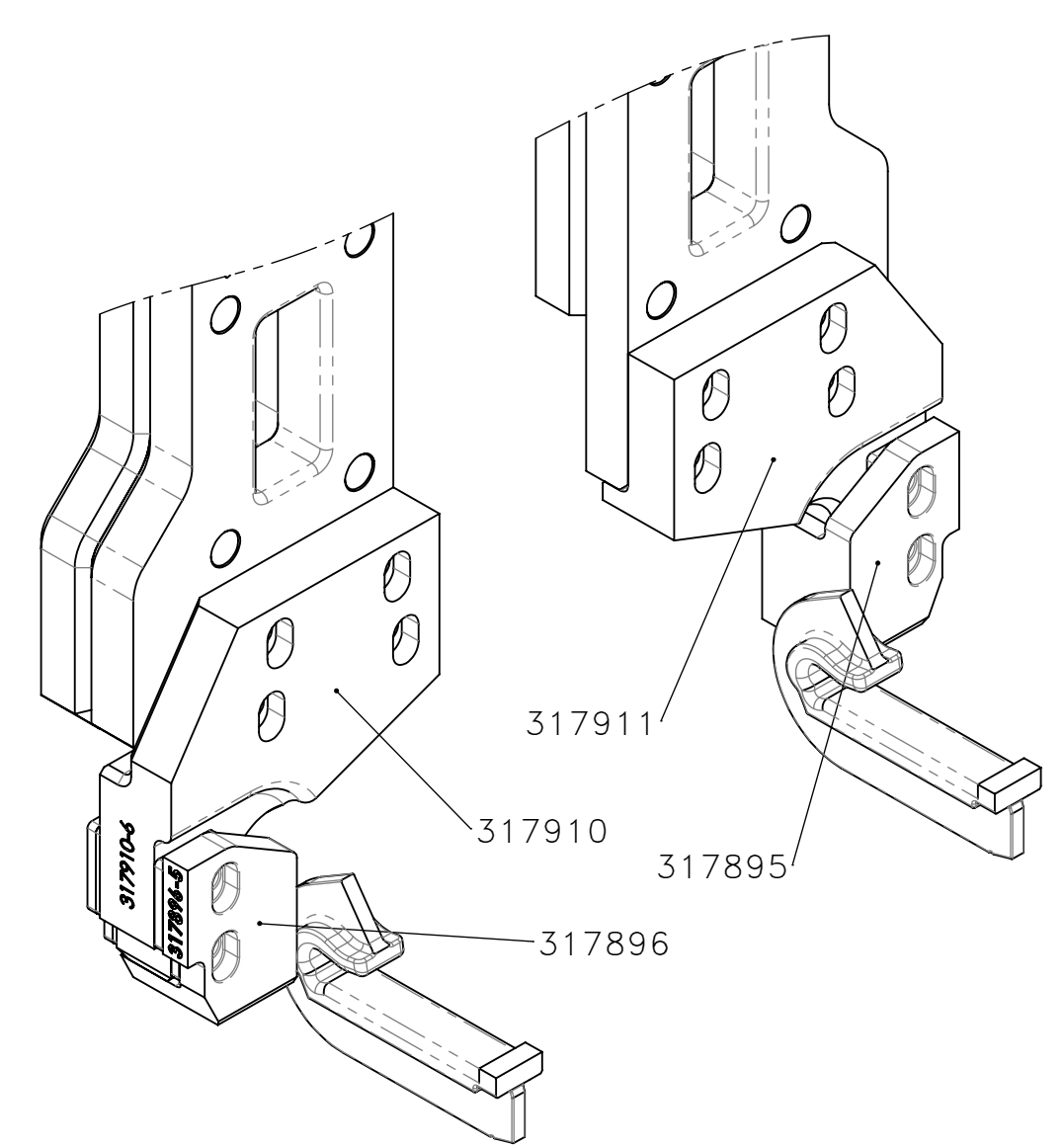
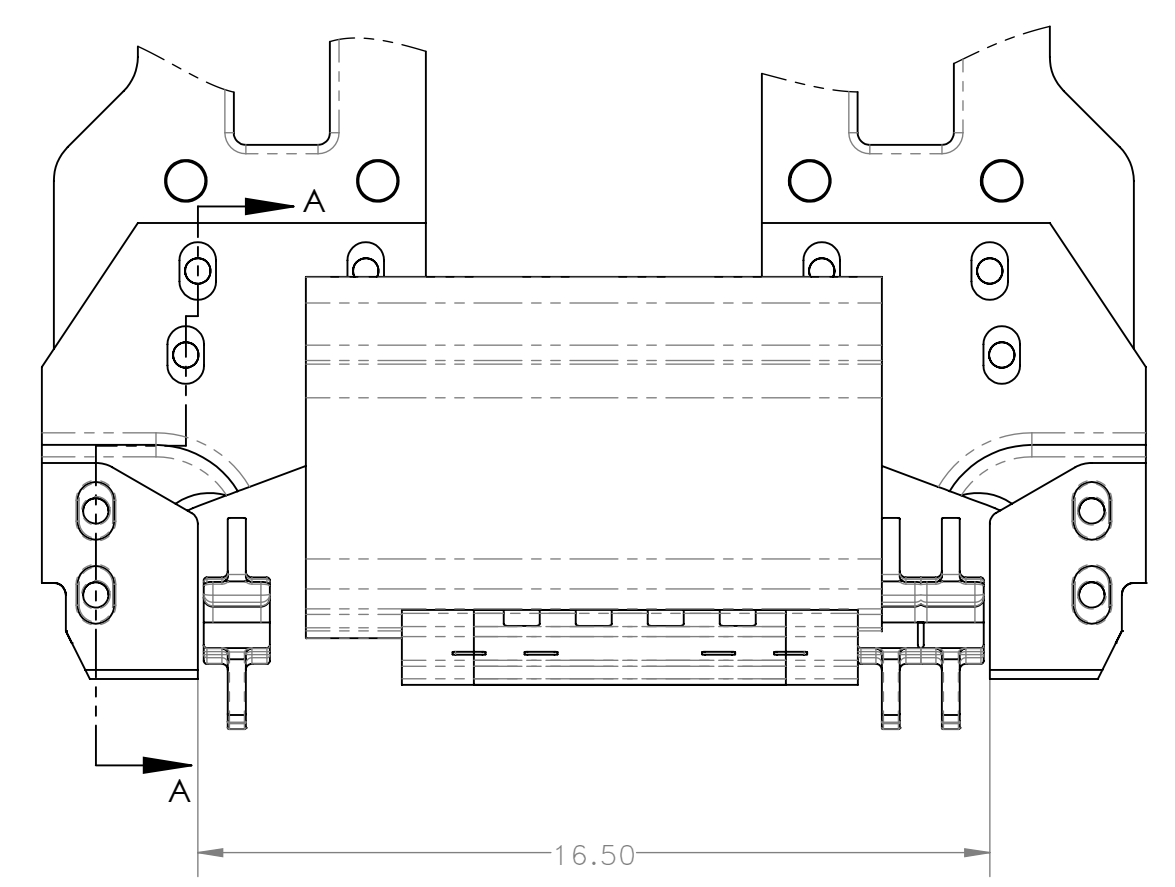


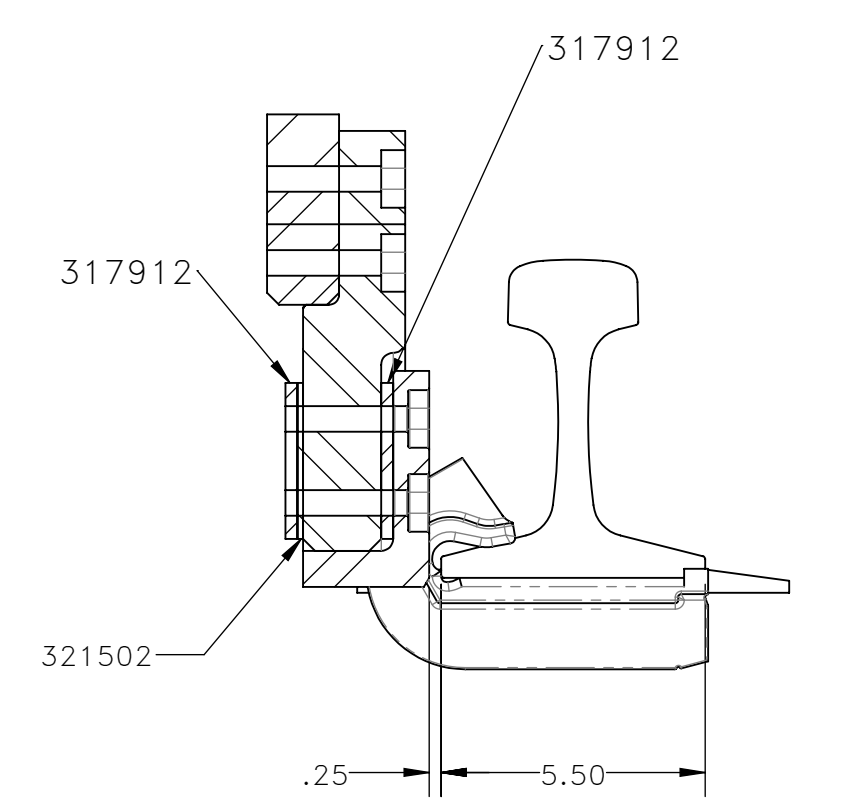
6" RAIL-SQUEEZE/ADJUST



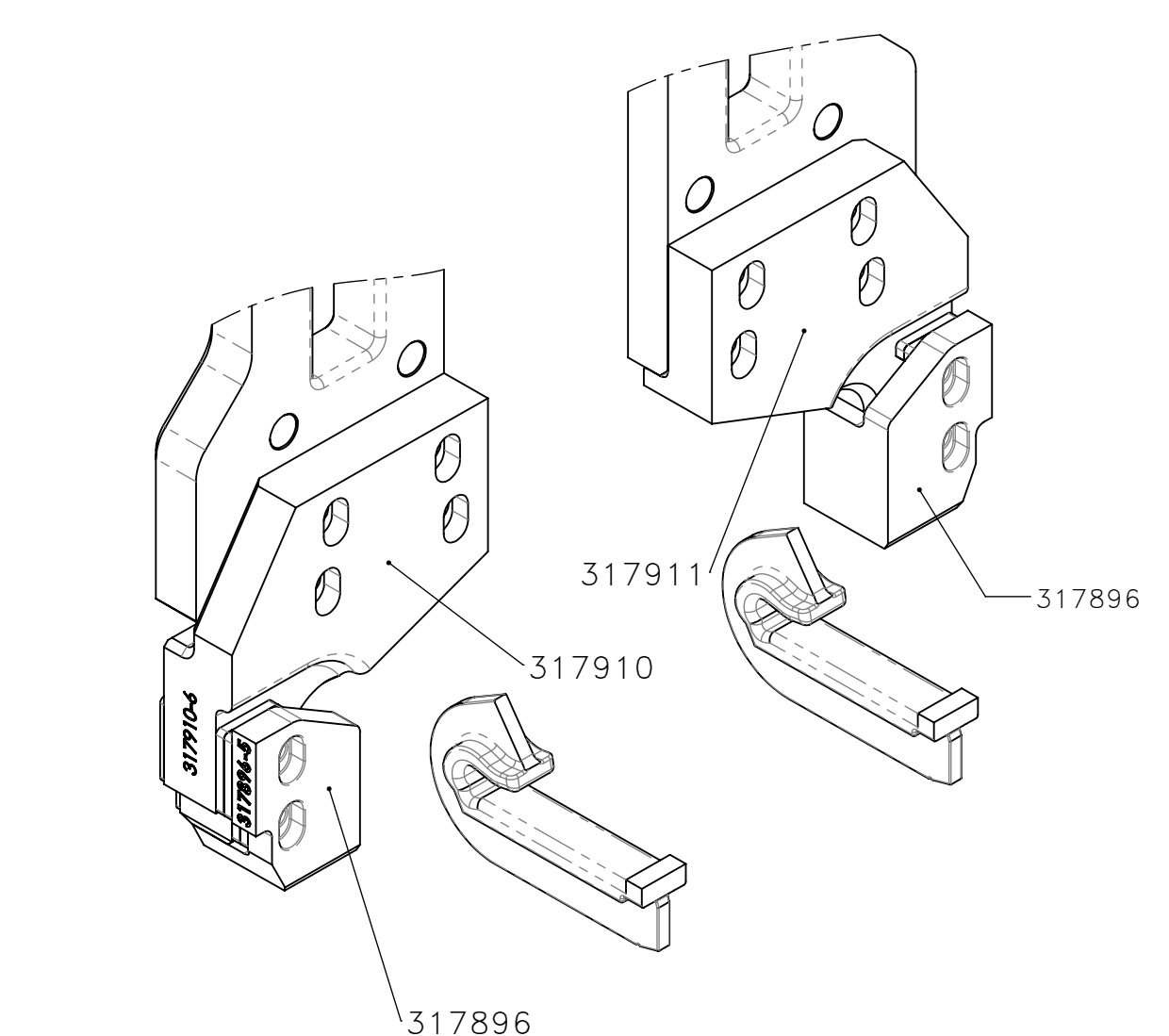
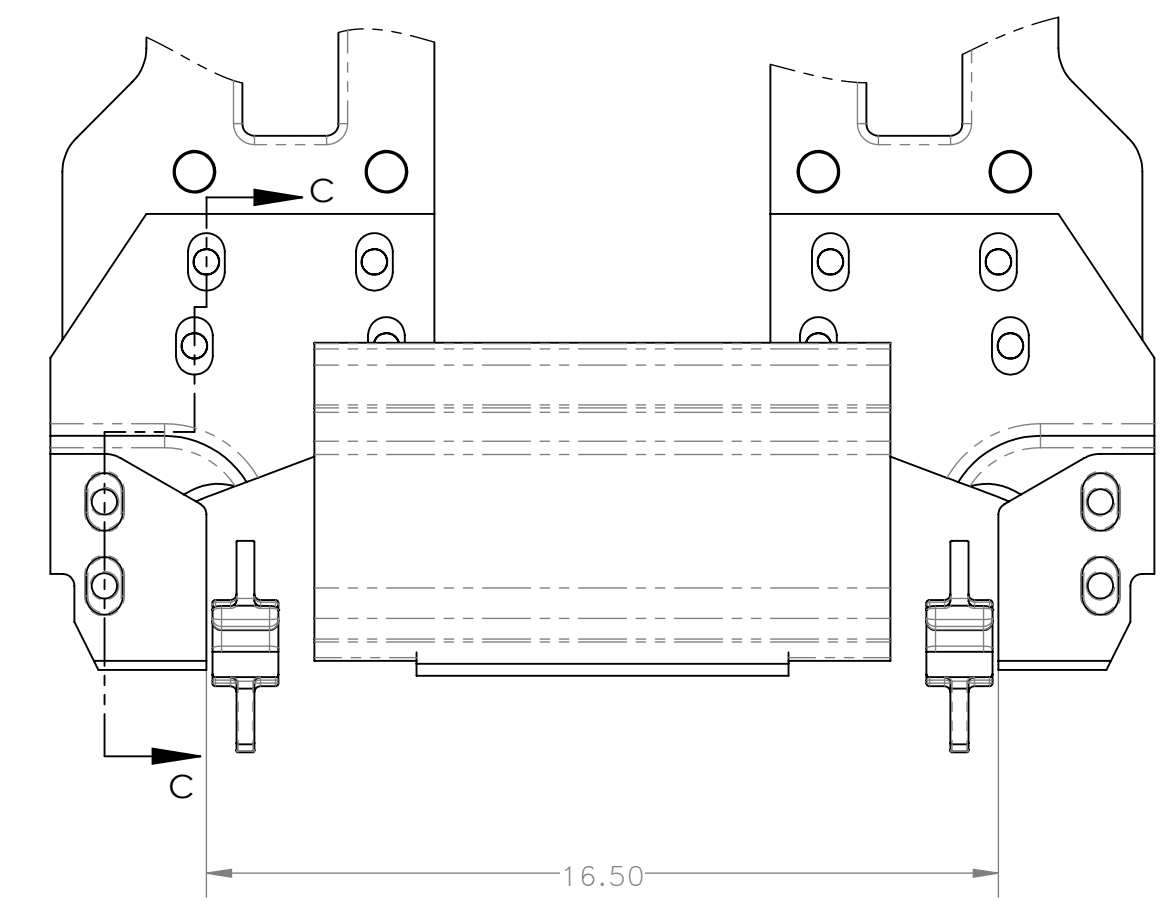
SECTION A-A
SCALE 1:4



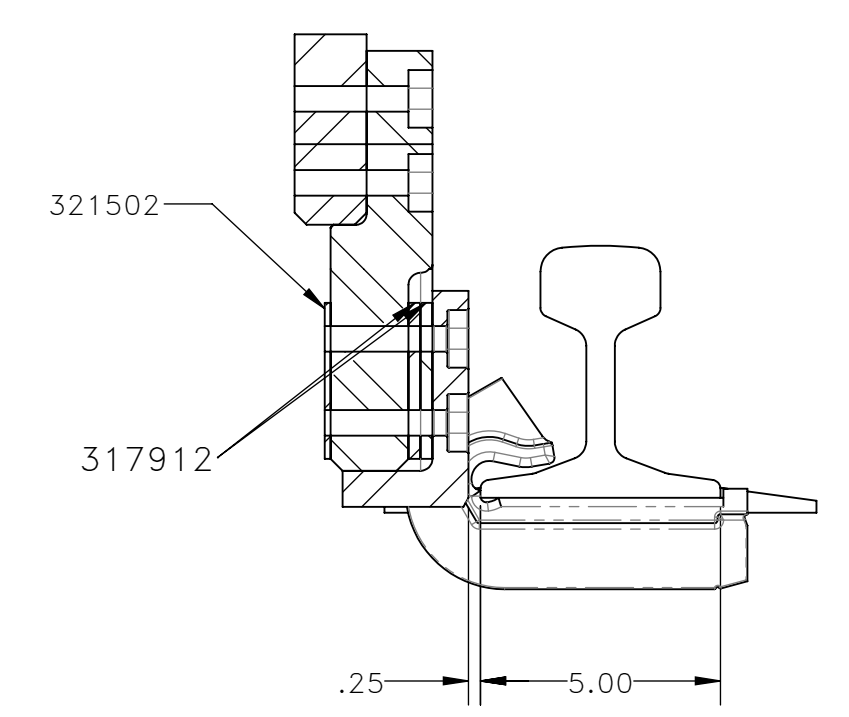
5.5" RAIL-SQUEEZE/ADJUST



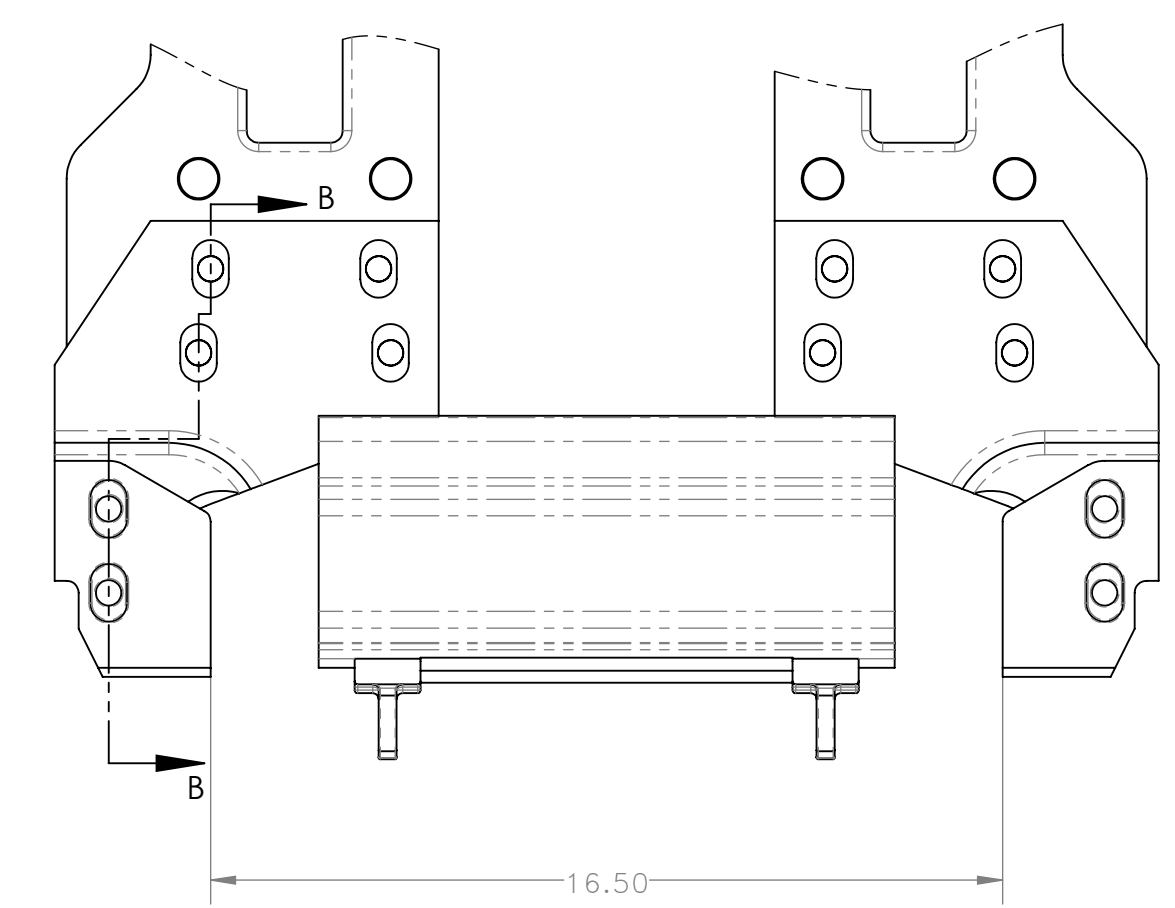
SECTION C-C
SCALE 1:4



5" RAIL-SQUEEZE/ADJUST



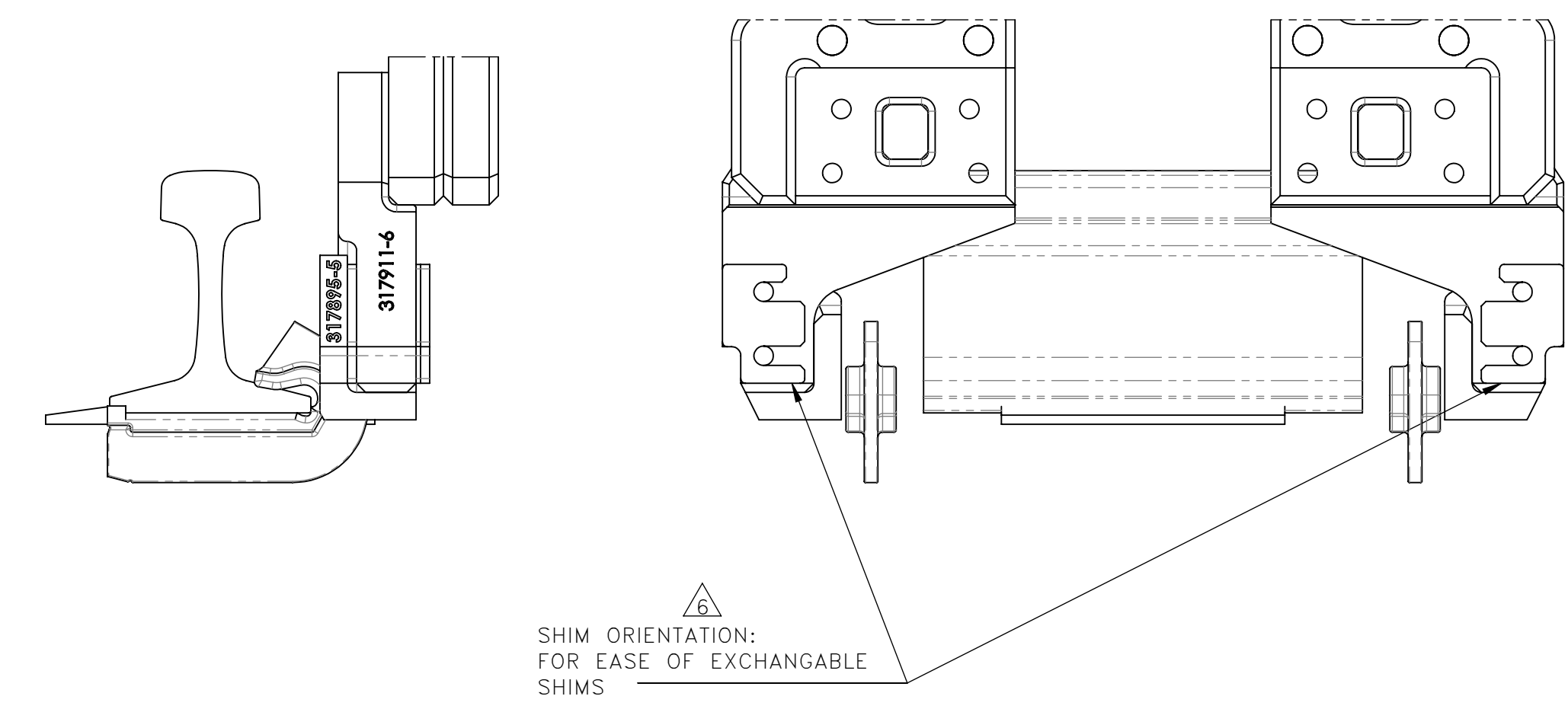
SECTION B-B
SCALE 1:4



FOR GEN-3 COMBO MACHINES (914570) AND EARLIER:
SEE KIT P/N 792985 TO CONVERT DASP TOOLS TO ANCHOR SQUEEZE
SEE KIT P/N 792986 TO CONVERT DASP TOOLS TO ANCHOR SPREAD

FOR GEN-4 COMBO MACHINES (93x582):
SEE KIT P/N 793071 TO CONVERT DASP TOOLS TO ANCHOR SQUEEZE
SEE KIT P/N 792986 TO CONVERT DASP TOOLS TO ANCHOR SPREAD

THE ABOVE COMBO MACHINES:
*THE ADDITION OF 321502 SHIM CAN BE
UTILIZED TO PROVIDE FINER ADJUSTMENTS OF A
TIGHTER CLEARANCE BETWEEN TOOLS AND RAIL.



ANCHOR ADJUST TOOLS

REV	EN	DESCRIPTION	DATE	DRN
1	2443	NEW RELEASE	8-17	MAI
2	2490	ADDED 16.50, 7.50, & 12.00 DIMENSIONS	9-17	MAI
3	2756	ADDED NOTE	12-17	MAI
4	4672	REVISED NOTES SHEET 1	12-19	SAG
5	5043	UPDATE TOOLING PICTORIALY	6-20	PR
6	5453	UPDATE SHIM ORIENTATION	12-20	PR

DIMENSION TOLERANCES UNLESS OTHERWISE SPECIFIED

LINEAR	.XX=±.03	.XXX=±.010
ANGULAR	X' = ±1'	X.X' = ±.5'

SURFACE FINISH 125/√ SMOOTH ALL SHARP EDGES NOT TO EXCEED CLEAN ALL WELDS

THIS PRINT AND ALL INFORMATION WITHIN BELONGS TO RACINE RAILROAD PRODUCTS

RACINE RAILROAD PRODUCTS
RACINE, WISCONSIN USA

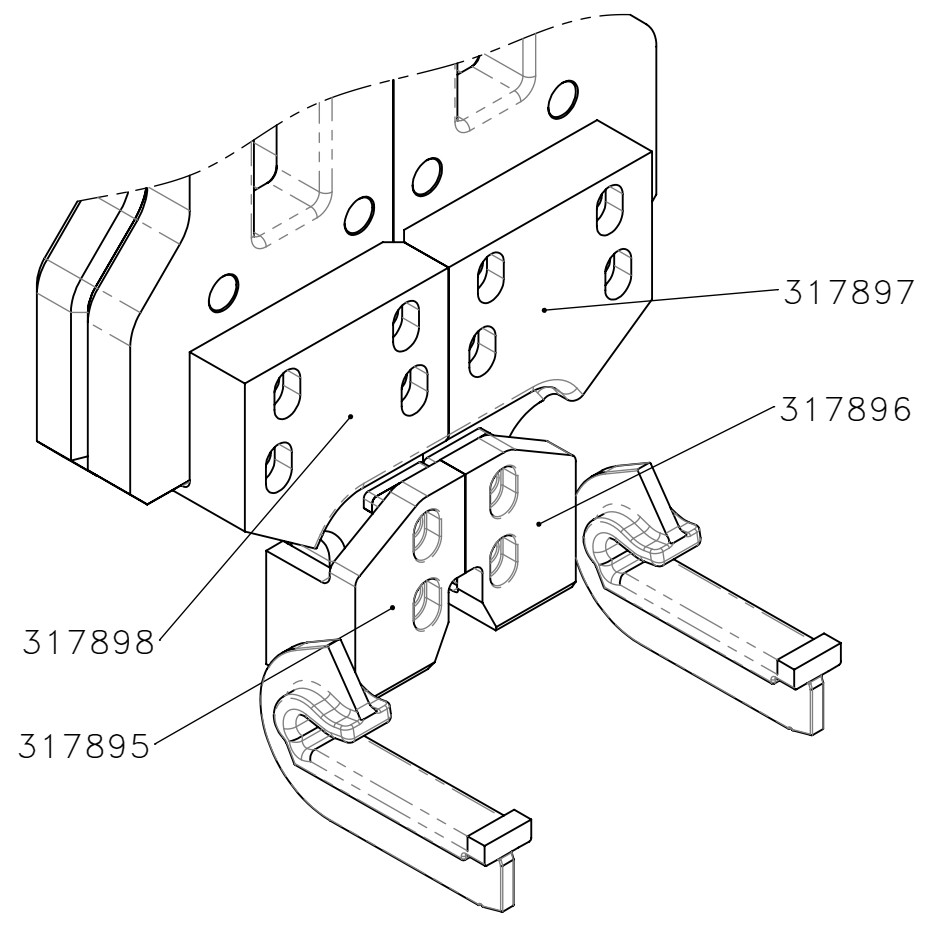
DESCRIPTION
INSTRUCTIONS, DASP TOOLS

MATERIAL
SEE BOM

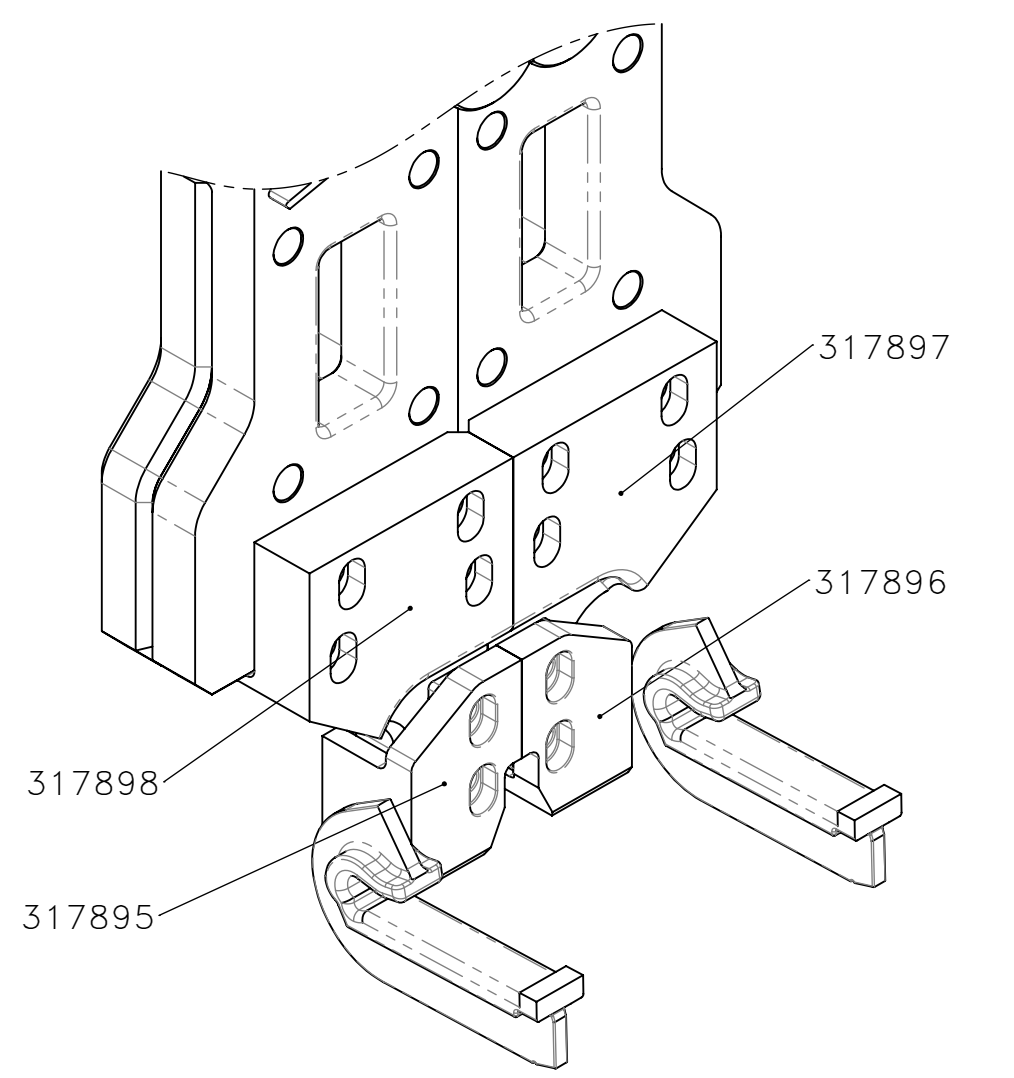
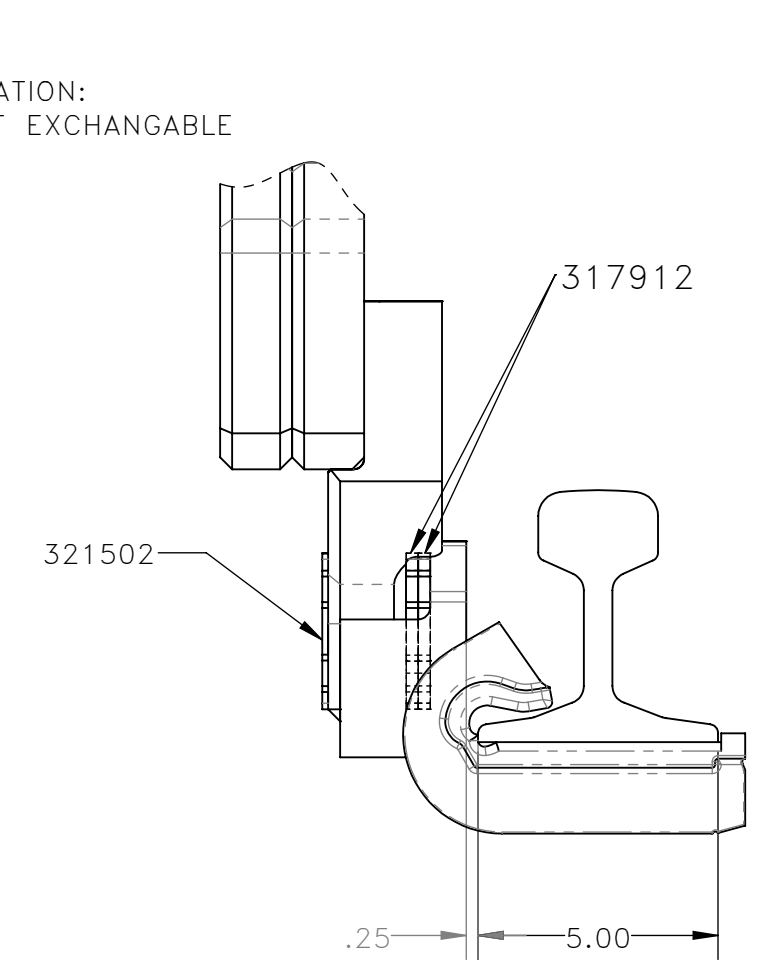
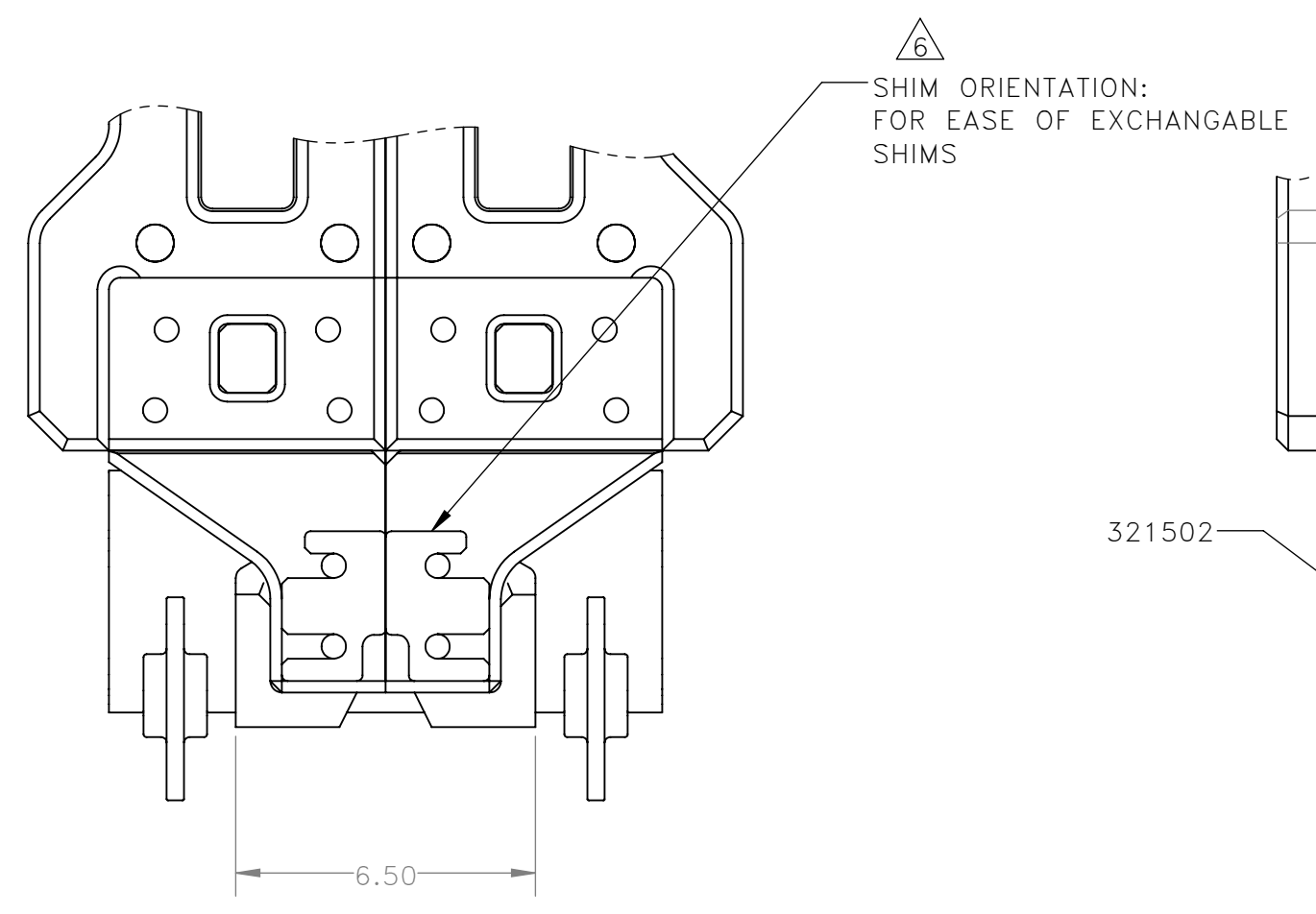
USED ON	SCALE	DATE
792980	1:12	08-28-17

DRN	CHK	APP	JOB NO	SHEET
MI			RD140001	1 OF 3

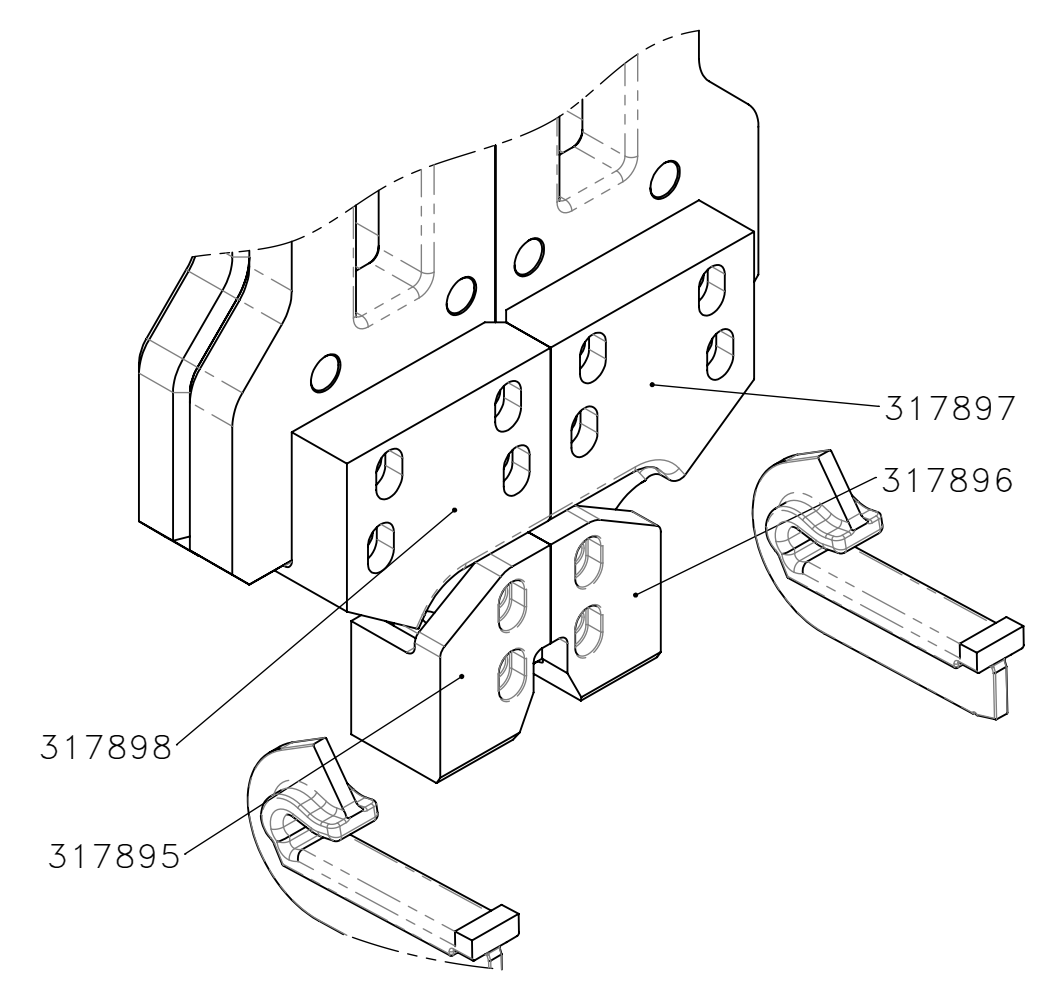
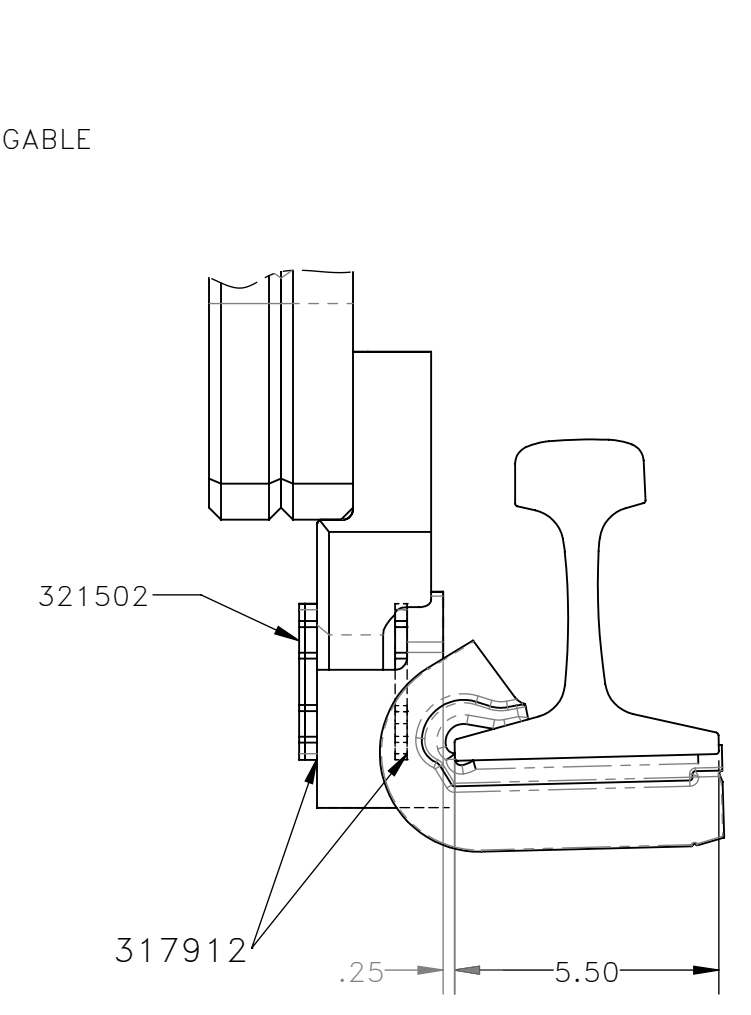
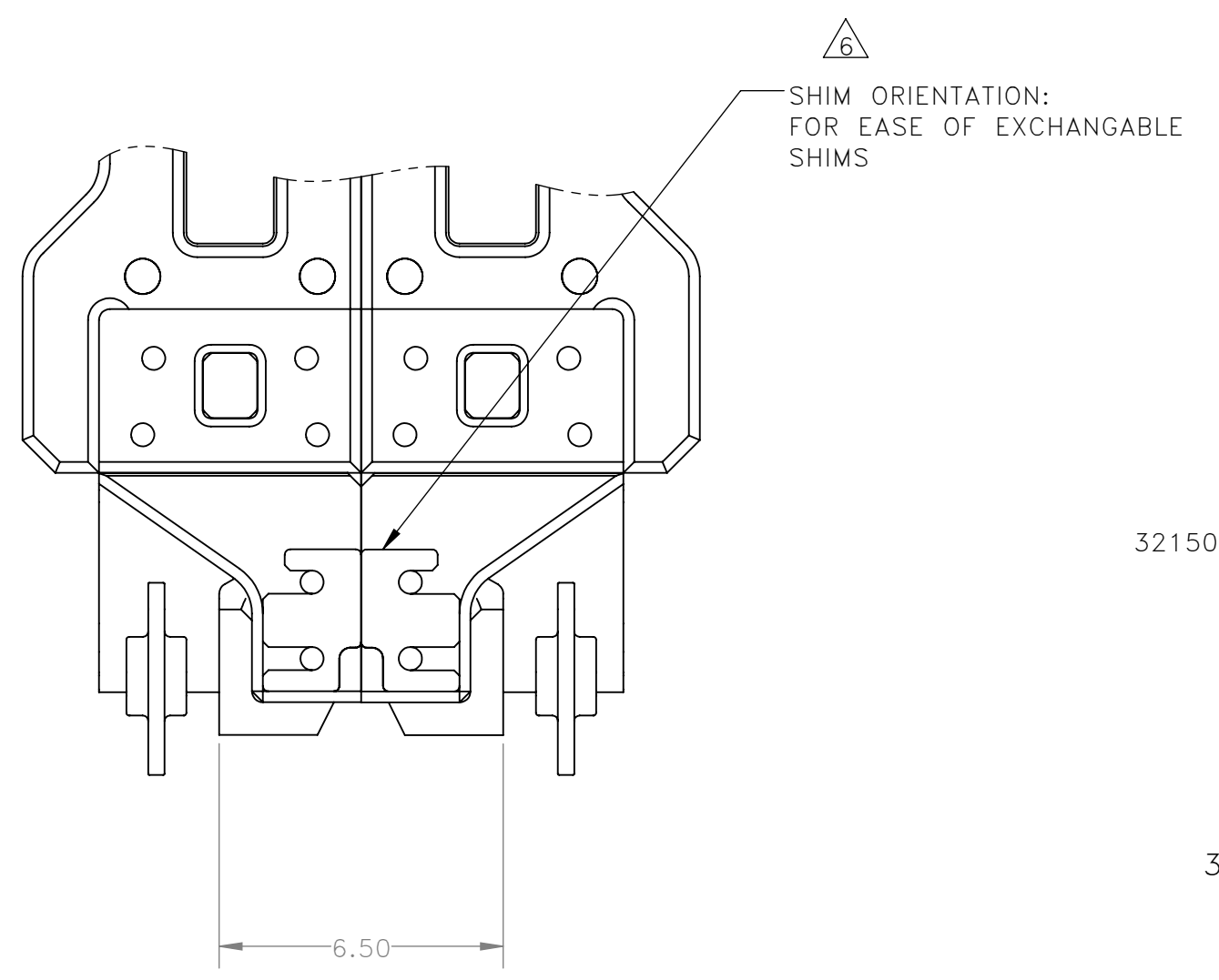
DWG SIZE	CATALOG	DWG NO
D	K	800258



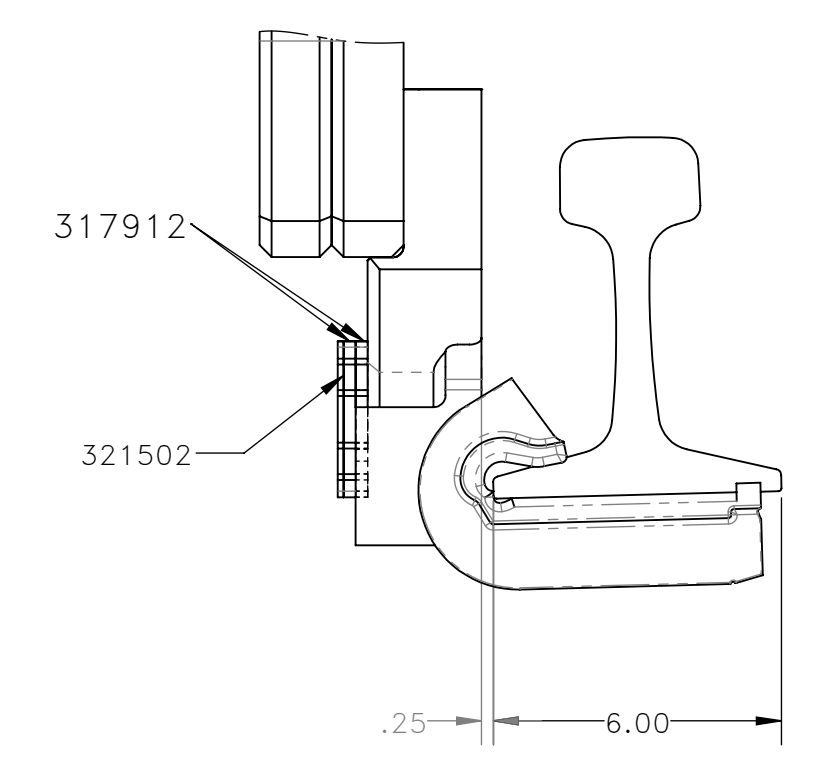
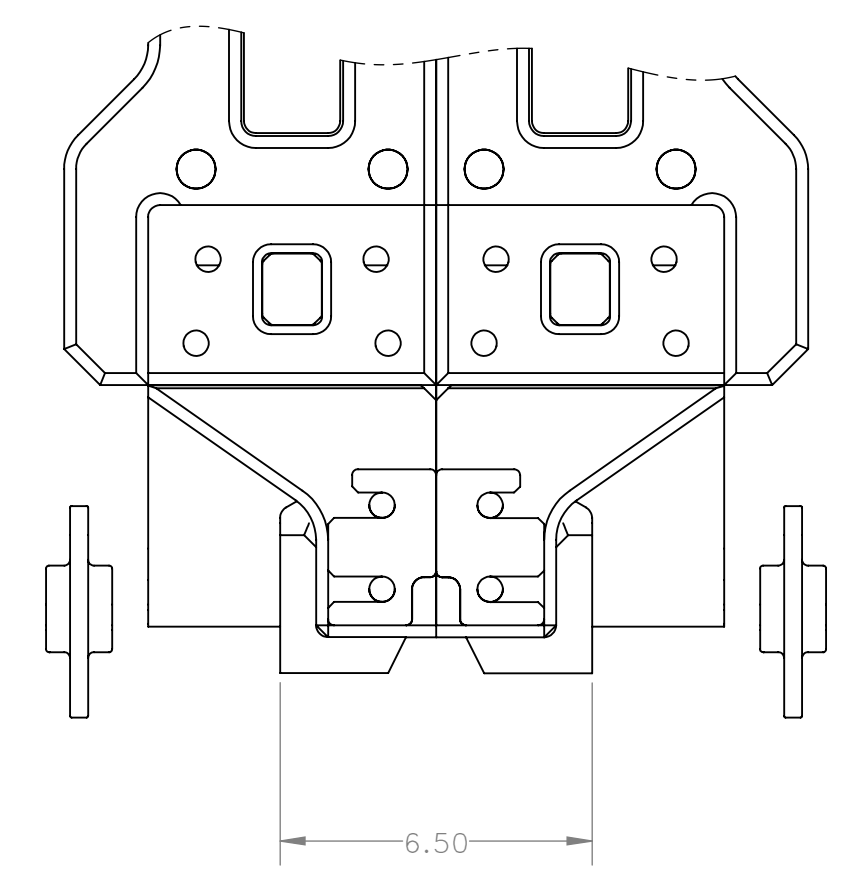
5" RAIL-SPREAD



5.5" RAIL-SPREAD



6" RAIL-SPREAD



ANCHOR SPREAD TOOLS

REV	EN	DESCRIPTION	DATE	DRN
1	2443	NEW RELEASE	8-17	MAI
2	2490	ADDED 16.50, 7.50, & 12.00 DIMENSIONS	9-17	MAI
3	2756	ADDED NOTE	12-17	MAI
4	4672	REVISED NOTES SHEET 1	12-19	SAG
5	5043	UPDATE TOOLING PICTORIALY	6-20	PR
6	5453	UPDATE SHIM ORIENTATION	12-20	PR

DIMENSION TOLERANCES UNLESS OTHERWISE SPECIFIED

LINEAR	.XX=±.03	.XXX=±.010
ANGULAR	X'=±1°	X.X'=±.5°

SURFACE FINISH 125/√ SMOOTH ALL SHARP EDGES NOT TO EXCEED CLEAN ALL WELDS

THIS PRINT AND ALL INFORMATION WITHIN BELONGS TO RACINE RAILROAD PRODUCTS

RACINE RAILROAD PRODUCTS
RACINE, WISCONSIN USA

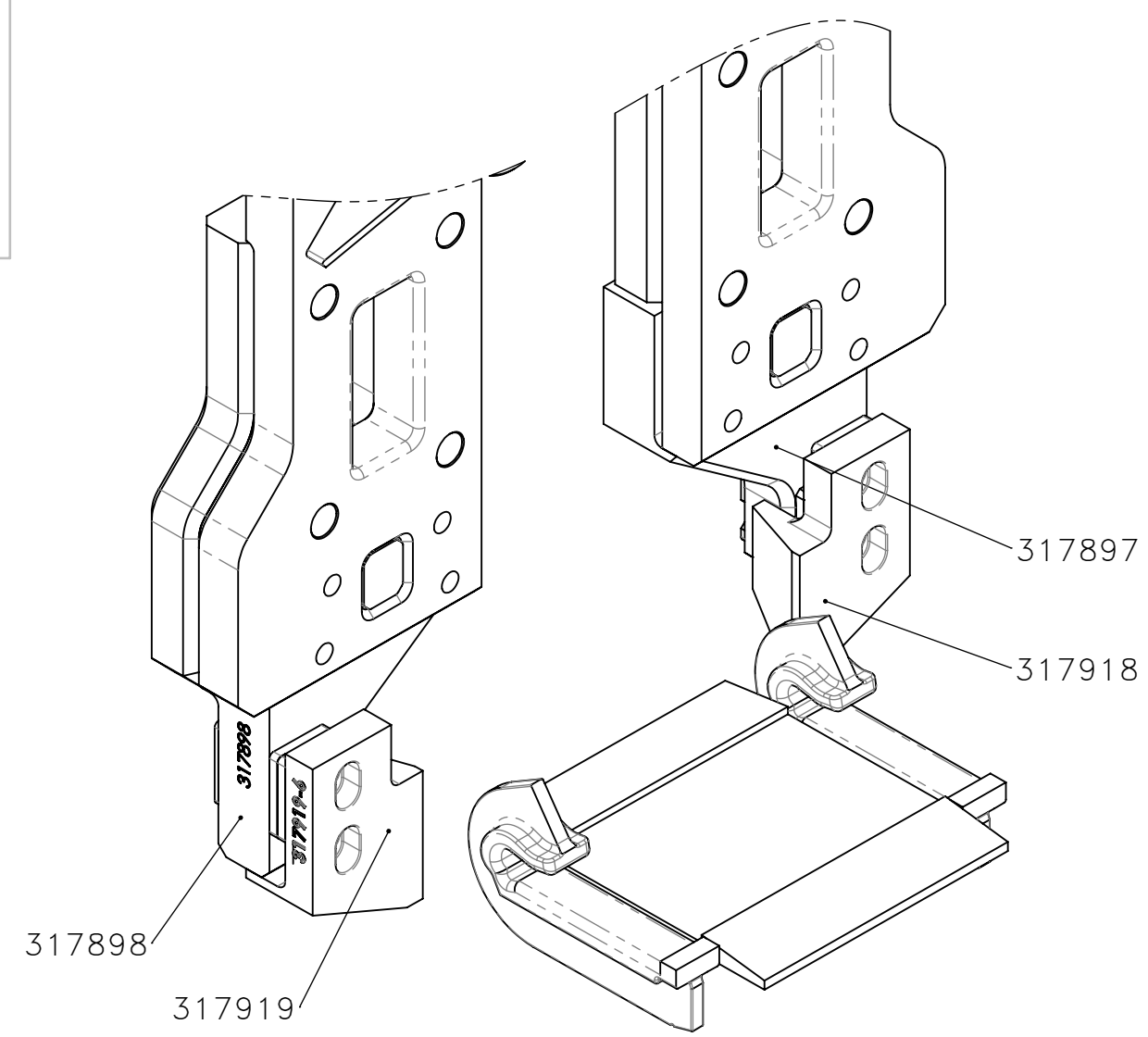
DESCRIPTION
INSTRUCTIONS, DASP TOOLS

MATERIAL
SEE BOM

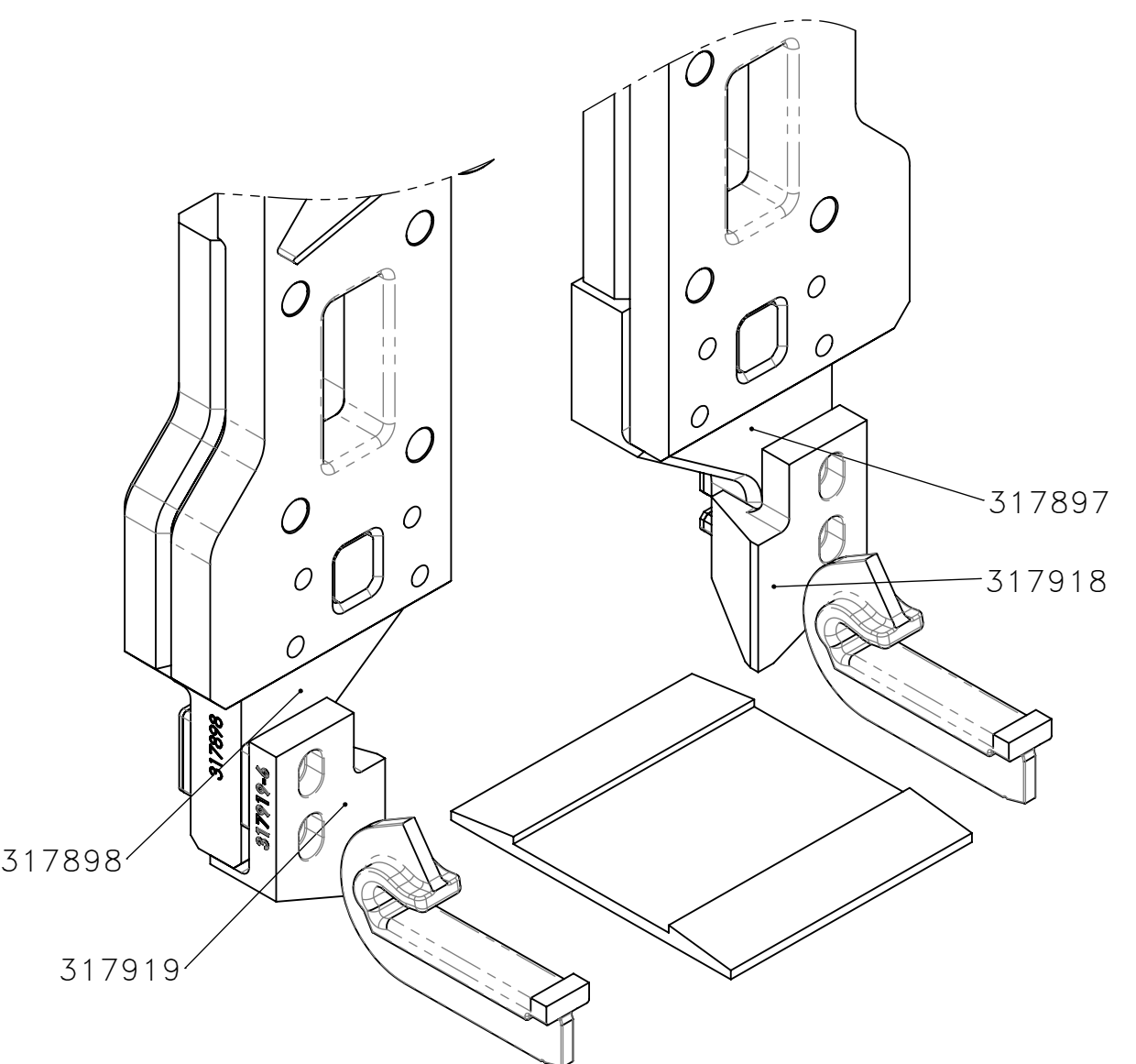
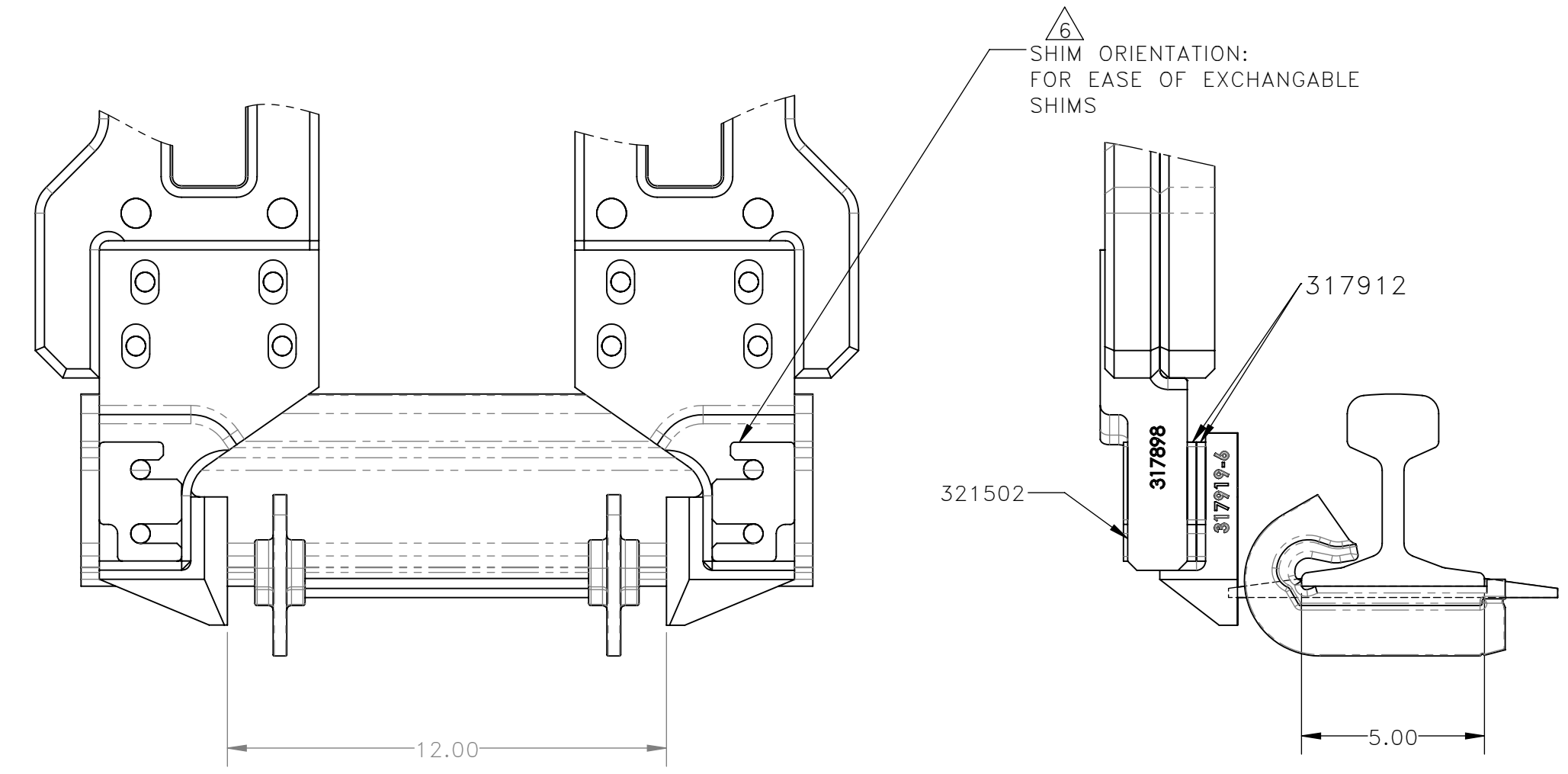
USED ON	792980	SCALE	DATE
		1:12	08-28-17

DRN	MI	CHK	APP	JOB NO	SHEET
				RD140001	2 OF 3

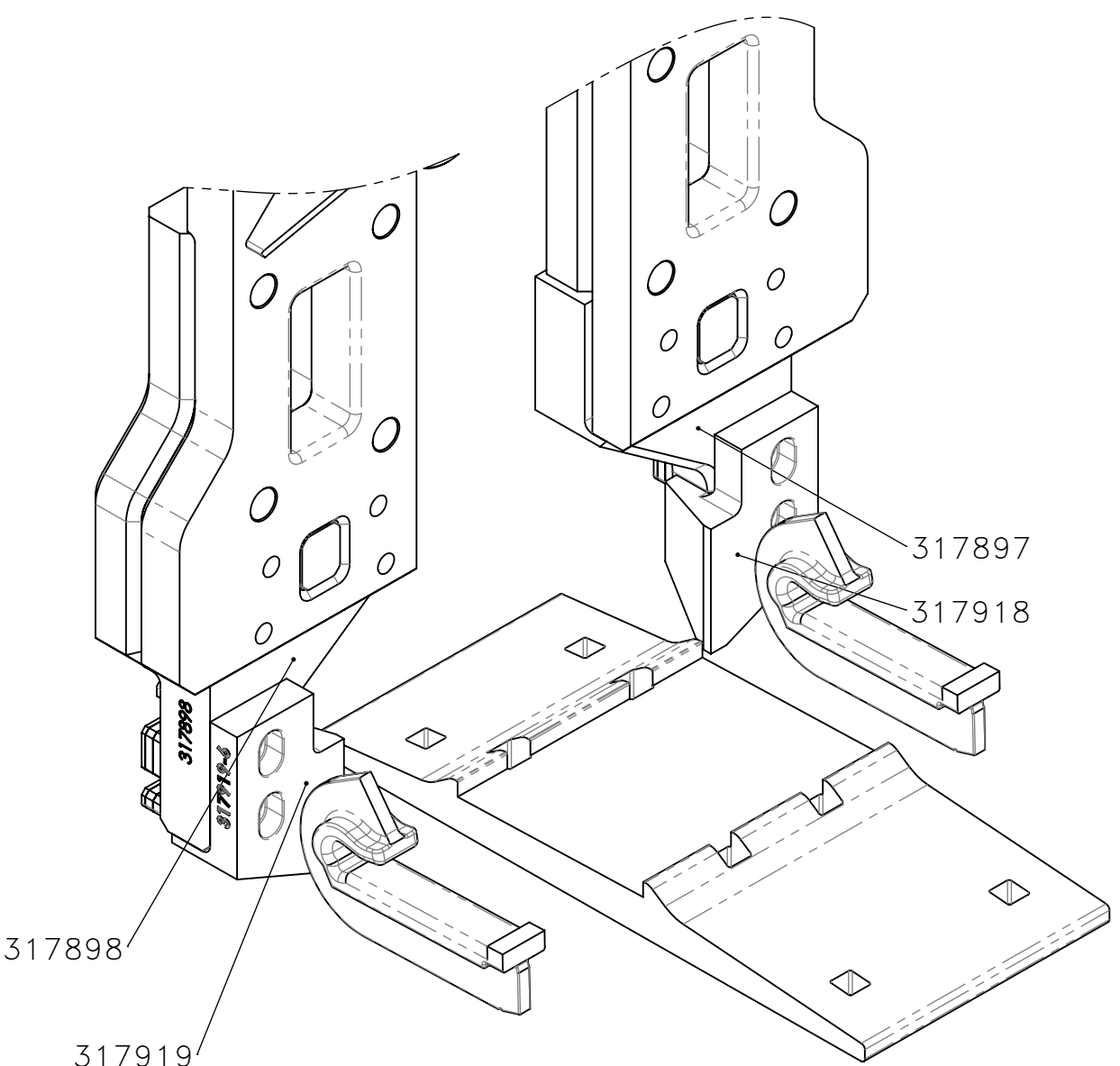
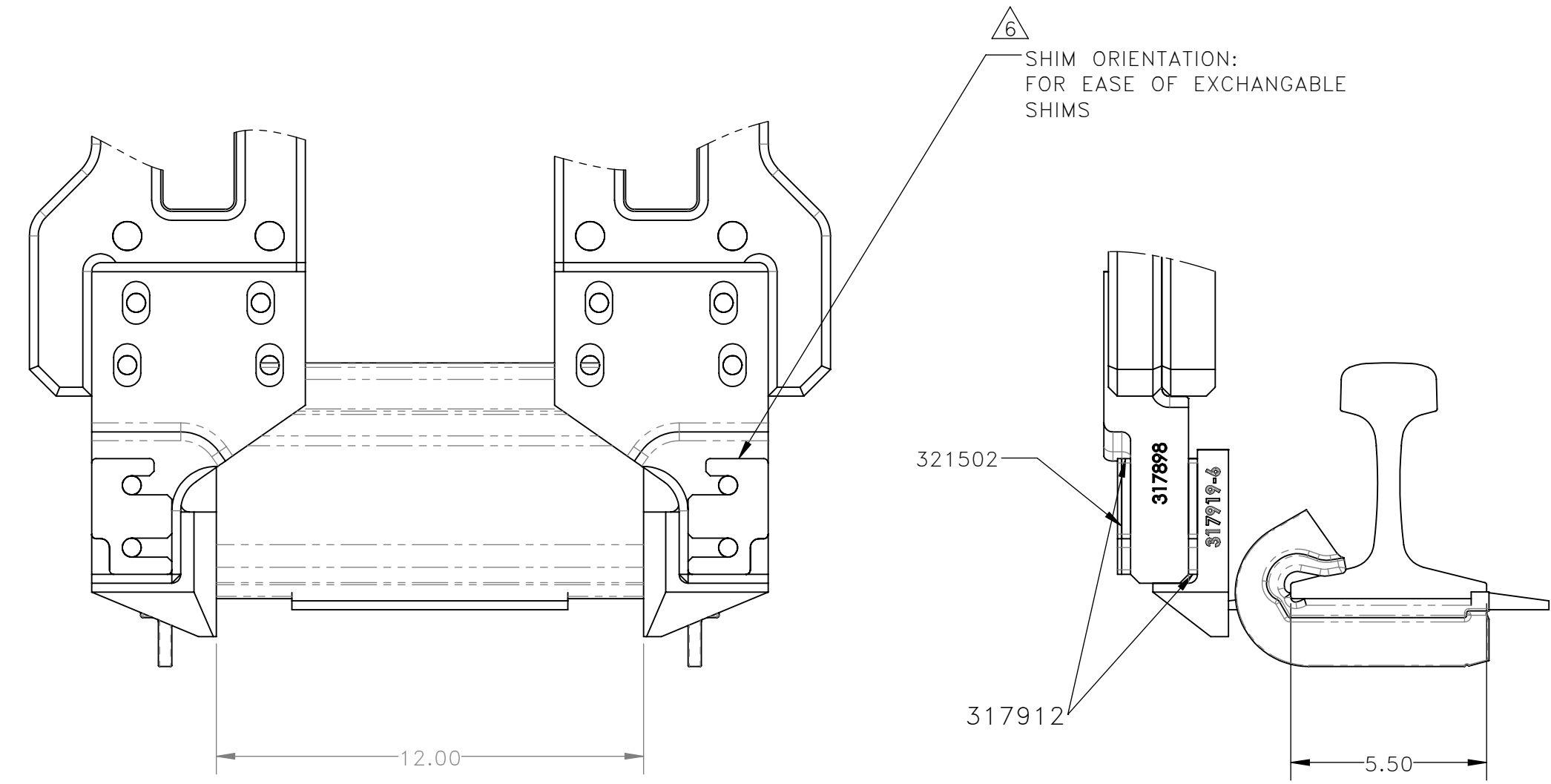
DWG SIZE	CATALOG	DWG NO
D	K	800258



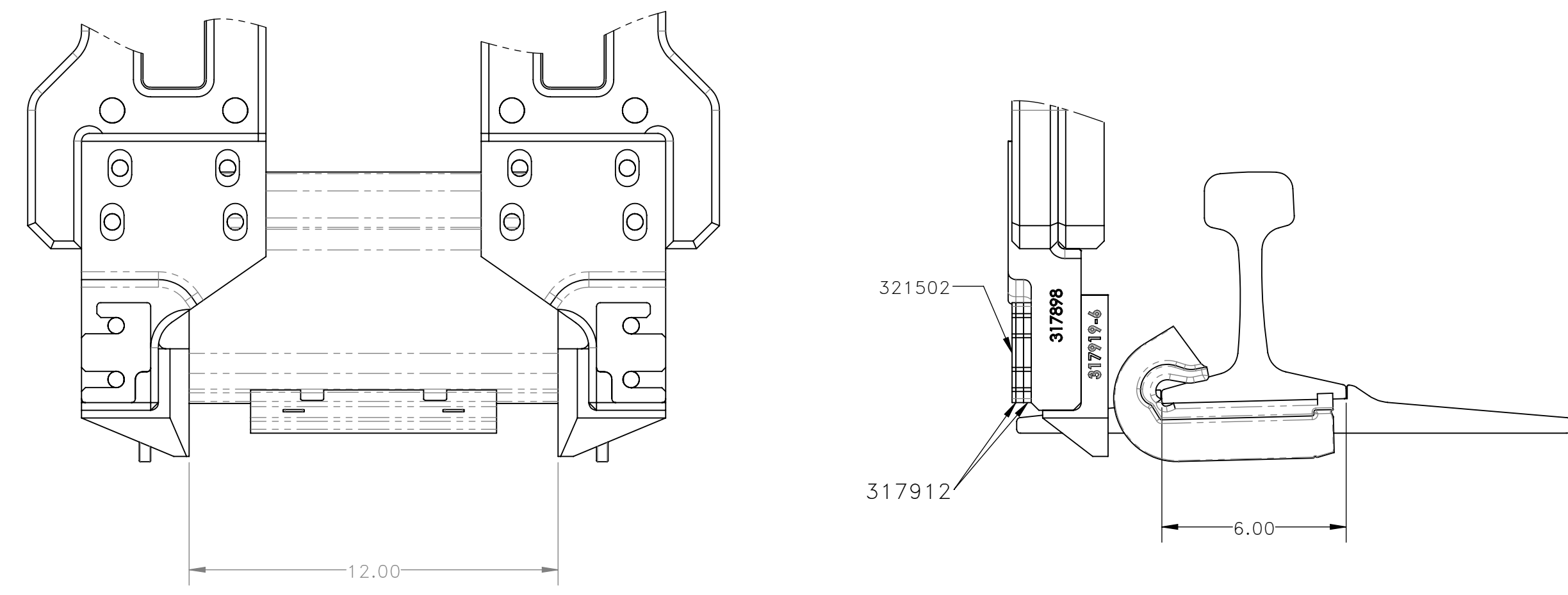
5" RAIL-SPREAD WITH PLATE



5.5" RAIL-SPREAD WITH PLATE



6" RAIL-SPREAD WITH PLATE



ANCHOR SPREAD TOOLS

REV	EN	DESCRIPTION	DATE	DRN
1	2443	NEW RELEASE	8-17	MAI
2	2490	ADDED 16.50, 7.50, & 12.00 DIMENSIONS.	9-17	MAI
3	2756	ADDED NOTE	12-17	MAI
4	4672	REVISED NOTES SHEET 1	12-19	SAG
5	5043	UPDATE TOOLING PICTORIALY	6-20	PR
6	5453	UPDATE SHIM ORIENTATION	12-20	PR

DIMENSION TOLERANCES UNLESS OTHERWISE SPECIFIED

LINEAR	.XX=±.03	.XXX=±.010
ANGULAR	X'=±1'	X.X'=±.5'

SURFACE FINISH 125/√ SMOOTH ALL SHARP EDGES NOT TO EXCEED CLEAN ALL WELDS

THIS PRINT AND ALL INFORMATION WITHIN BELONGS TO RACINE RAILROAD PRODUCTS

RACINE RAILROAD PRODUCTS
RACINE, WISCONSIN USA

DESCRIPTION
INSTRUCTIONS, DASP TOOLS

MATERIAL
SEE BOM

USED ON	792980	SCALE	DATE
		1:12	08-28-17

DRN	MI	CHK	APP	JOB NO	SHEET
				RD140001	3 OF 3

DWG SIZE	CATALOG	DWG NO
D	K	800258