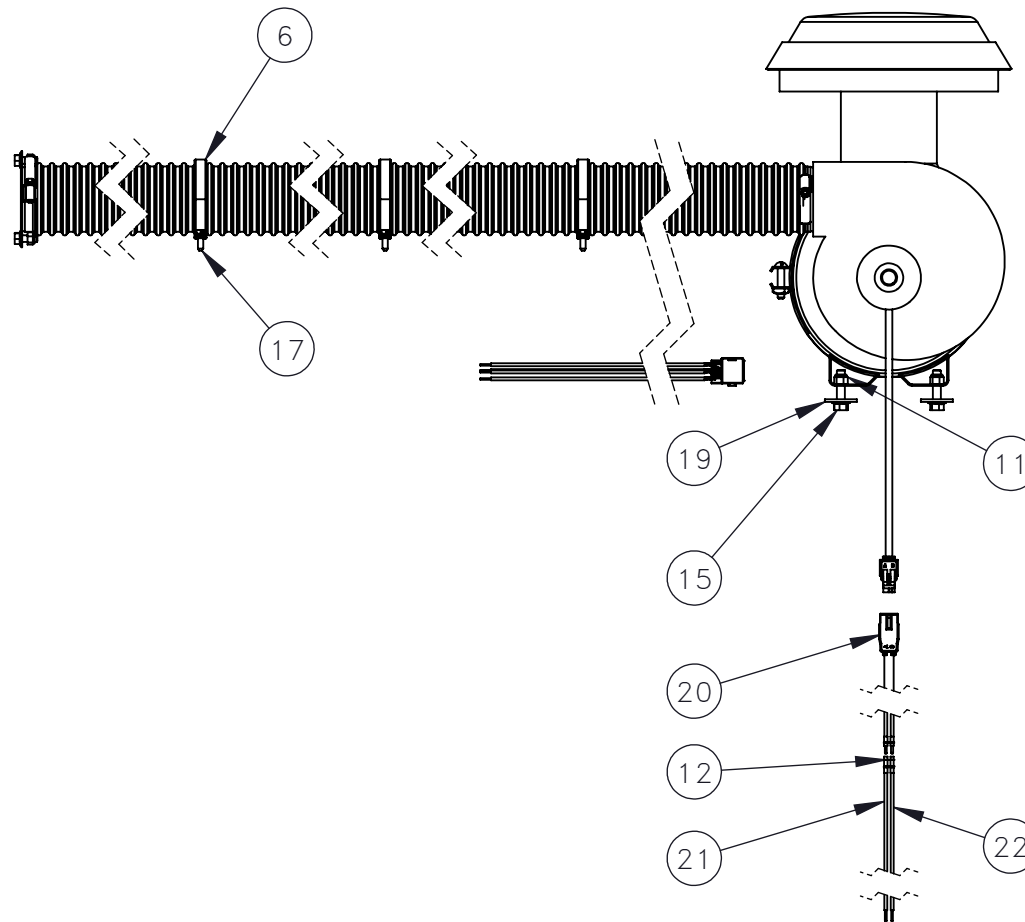


INSTRUCTIONS:
(SEE SHEET 2 FOR HOLE SIZES AND DIAGRAM FOR WIRING)

- 1 CONNECT AIR FILTER TO PRESSURIZER.
- 2 POSITION AND MOUNT AIR FILTER ONTO CHASSIS GRATING BEHIND CAB.
- 3 CUT Ø3.016 AND Ø.313 HOLES THROUGH THE REAR CAB WALL, APPLY SILICONE AND INSTALL THE AIR OUTLET ADAPTER ON THE CAB.
- 4 POSITION AIR DUCT HOSE BETWEEN PRESSURIZER AND AIR OUTLET ADAPTER. INSTALL AIR DUCT HOSE WITH HOSE CLAMPS EVENLY ALONG CAB WALL WITH SELF TAPPING SCREWS, TIGHTEN HOSE CLAMPS.
- 5 INSTALL TERMINAL BLOCKS BLACK "053", GREY "COM2", GREY "048" AND RELAY INSIDE CONTROL BOX.
- 6 CONNECT WIRES FROM RELAY: WIRES 053, COM2, 048 TO TERMINAL BLOCKS, CONNECT WIRE 412 TO EVAPORATOR RELAY "CR04" PIN 85.
- 7 DISCONNECT HARNESS CONN 024 FROM CONTROL BOX, REMOVE PLUGS "D" AND "E" FROM CONNECTOR SOCKET AND PLUG.
- 8 INSTALL WIRE FROM TERMINAL BLOCKS "053" TO SOCKET CONN "D" AND WIRE "COM2" TO SOCKET CONN "E".
- 9 ROUTE WIRES FROM WIRE "HARNESS CONNECTOR PLUG, CONN 025" "053" TO PLUG CONN "D" AND WIRE "COM2" TO PLUG CONN "E"
- 10 RECONNECT HARNESS ONTO CONTROL BOX CONN 024.



NO.	QTY	DESCRIPTION	PART NO.
1	REF	ADAPTER, AIR OUTLET	468475
2	REF	BLOCK, TERMINAL: BLACK	473101
3	REF	BLOCK, TERMINAL: GREY	472507
4	REF	BLOWER	718512
5	REF	CLAMP, HOSE: 2.81-3.75 DIA	460086
6	REF	CLAMP, HOSE: 3.5 DIA	473399
7	REF	FILTER, AIR	468295
8	REF	HOSE, 3 X 96 AIR DUCT	318625
9	REF	MARKER, TERMINAL	471902
10	REF	NUT, HEX ES: .31-18	450578
11	REF	NUT, HEX ES: .38-16	450577
12	REF	PIN, SOCKET	468807
13	REF	RELAY, PRESSURIZER	718514
14	REF	SCR, HEX FLG: .31-18 X .75	491045
15	REF	SCR, HEX FLG: .38-16 X 1.5	461833
16	REF	SCR, PAN: 10-24 X .38	491204
17	REF	SCR, SEL TPG: .25 X .75	491702
18	REF	WASHER, FLT: .19	401627
19	REF	WASHER, FLT: .38	380061
20	REF	WIRE HARNESS, CONN 025	718513
21	REF	WIRE, ELEC: 14 GA BLK	016779
22	REF	WIRE, ELEC: 14 GA GRN	006621

REV	EN	DESCRIPTION	DATE	DRN
1	3032	NEW RELEASE	3-18	MSO

DIMENSION TOLERANCES UNLESS OTHERWISE SPECIFIED

LINEAR	.XX=±.03	.XXX=±.010
ANGULAR	X°=±1°	X.X°=±.5°

SURFACE FINISH 125 ✓ NOT TO EXCEED
SMOOTH ALL SHARP EDGES
CLEAN ALL WELDS

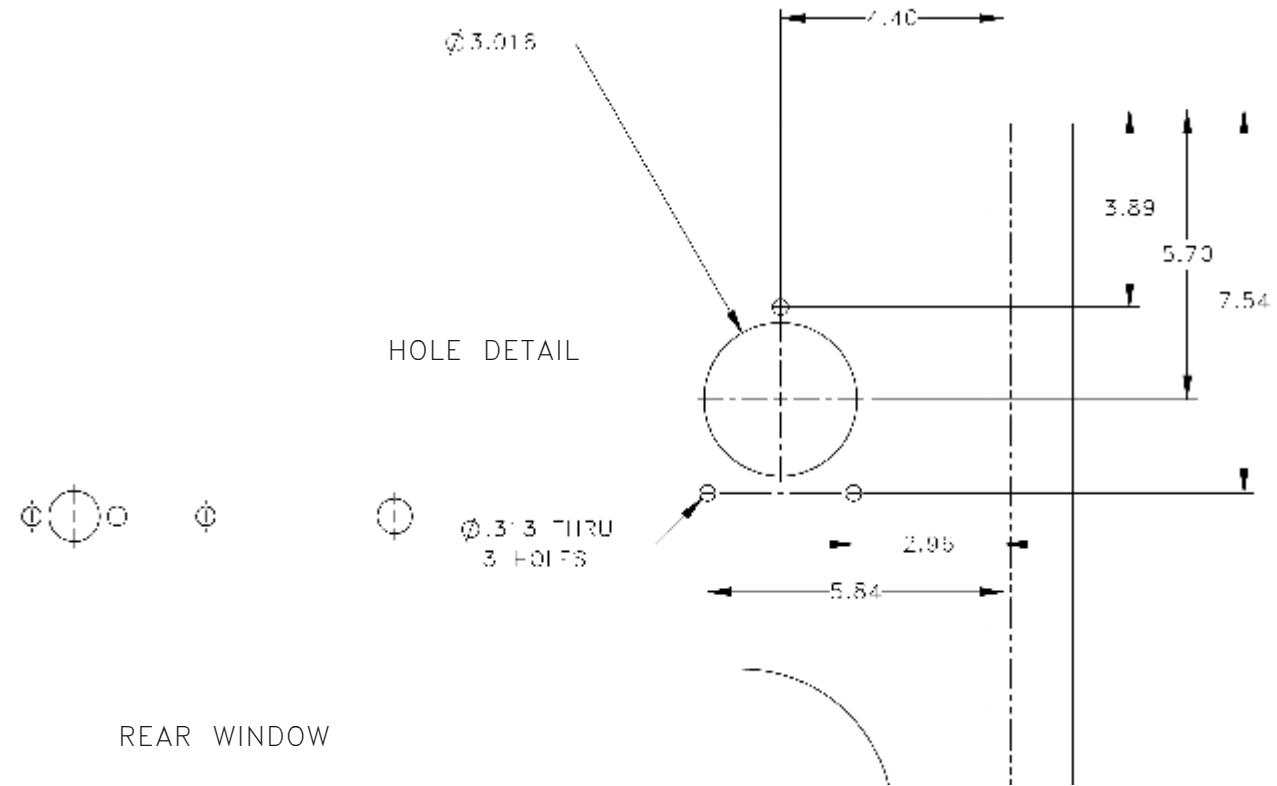
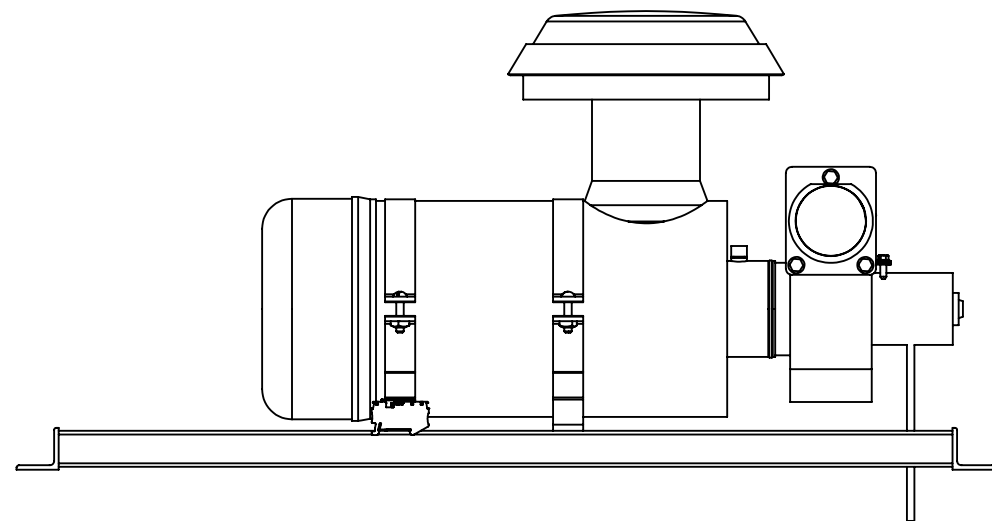
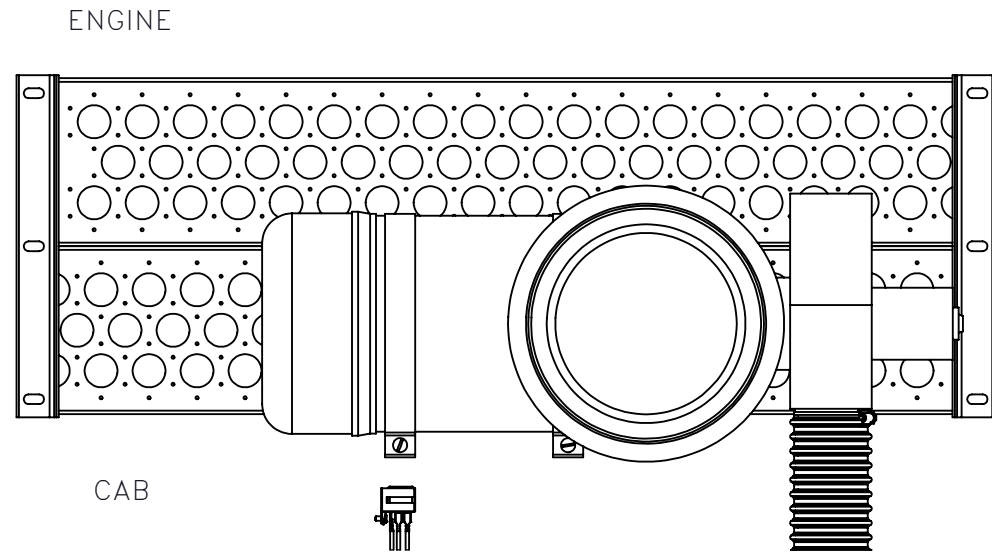
THIS PRINT AND ALL INFORMATION WITHIN BELONGS TO RACINE RAILROAD PRODUCTS

RACINE RAILROAD PRODUCTS
RACINE, WISCONSIN USA

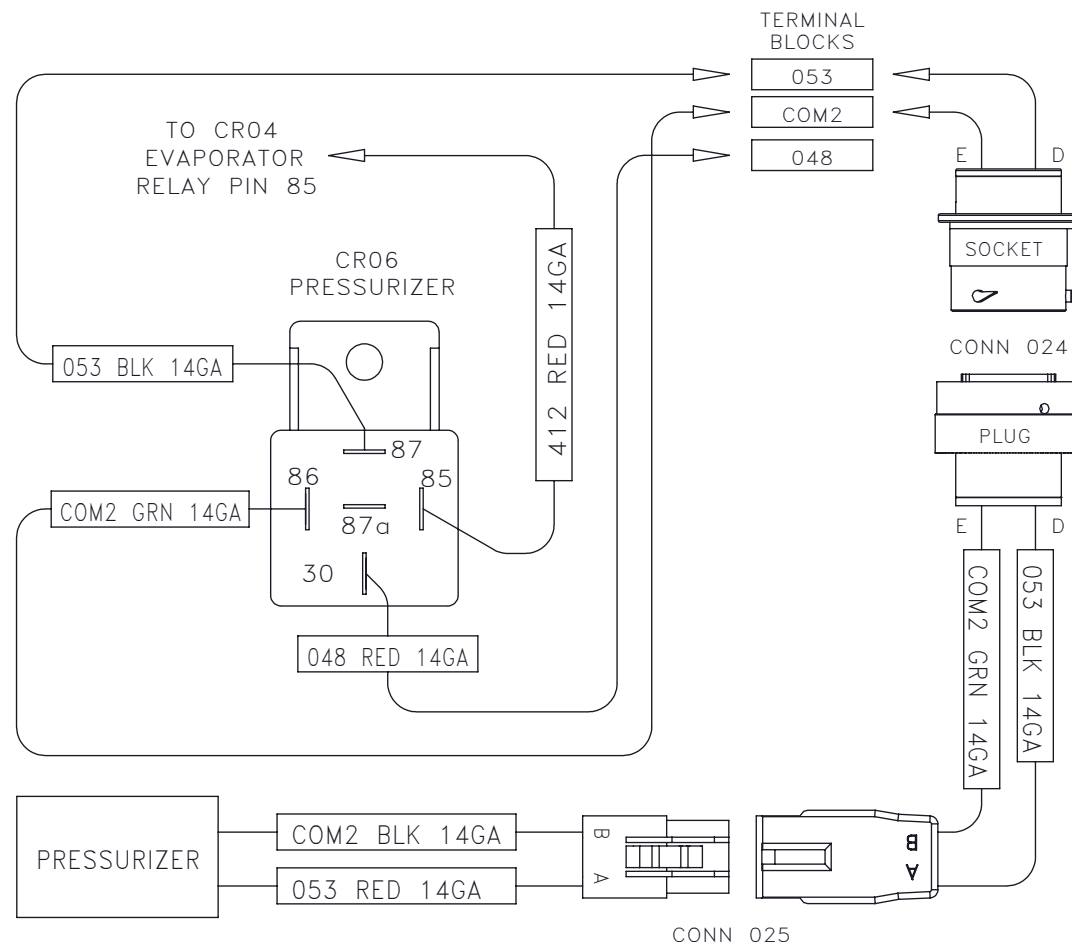
DESCRIPTION
INSTRUCTIONS, CAB PRESSURIZER

MATERIAL
SEE BOM

USED ON	793008	SCALE	1:9	DATE	03-23-18
DRN	MSO	CHK	APP	JOB NO	RD140001
EXP NO				SHEET	1 OF 2
				DWG NO	800271



REAR WINDOW



REV	EN	DESCRIPTION	DATE	DRN
1	3032	NEW RELEASE	3-18	MSO
DIMENSION TOLERANCES UNLESS OTHERWISE SPECIFIED				
LINEAR		.XX=±.03	.XXX=±.010	
ANGULAR		X°=±1°	X.X°=±.5°	
SURFACE FINISH		125	SMOOTH ALL SHARP EDGES CLEAN ALL WELDS	
NOT TO EXCEED				
THIS PRINT AND ALL INFORMATION WITHIN BELONGS TO RACINE RAILROAD PRODUCTS				
RACINE RAILROAD PRODUCTS RACINE, WISCONSIN USA				
DESCRIPTION				
INSTRUCTIONS, CAB PRESSURIZER				
MATERIAL				
SEE BOM				
USED ON		793008	SCALE	DATE
			1:8	03-23-18
DRN	CHK	APP	JOB NO	SHEET
MSO			RD140001	2 OF 2
EXP NO			DWG NO	
			800271	