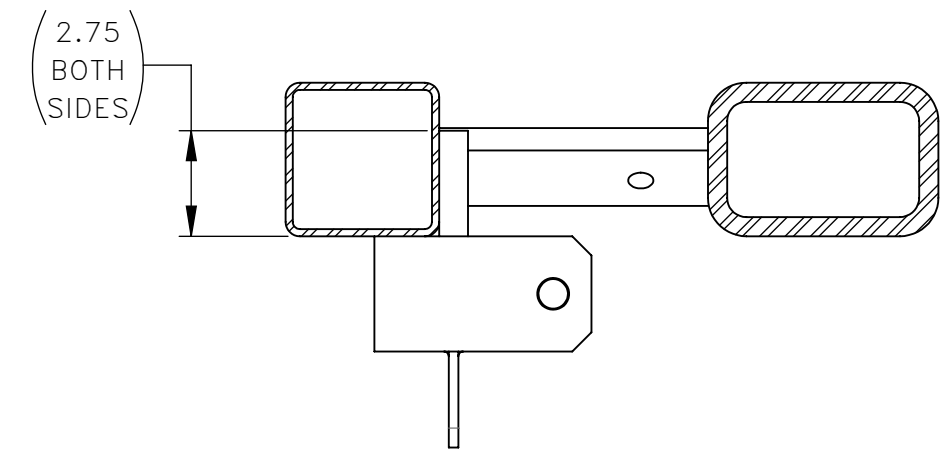
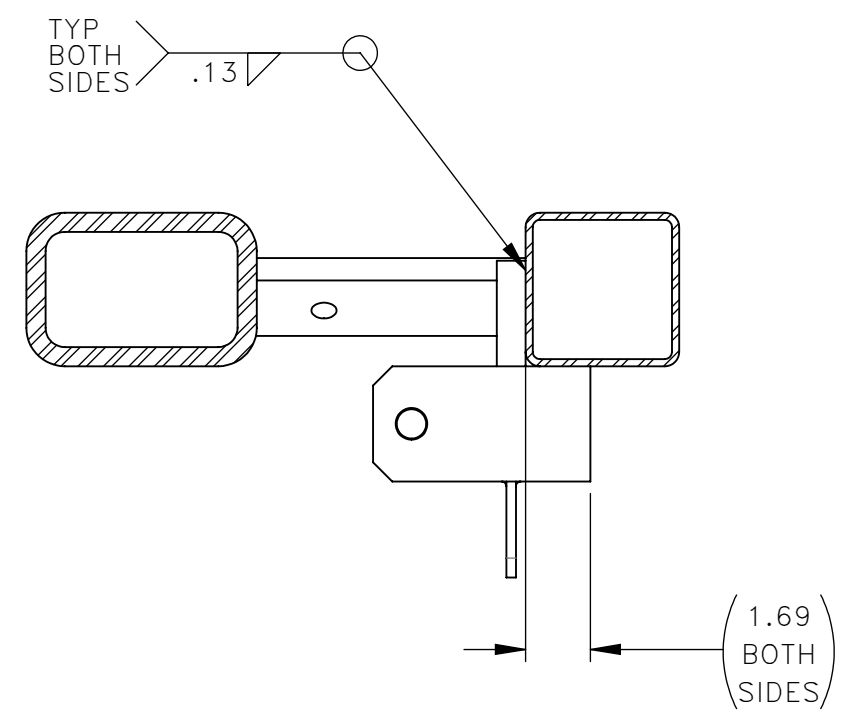
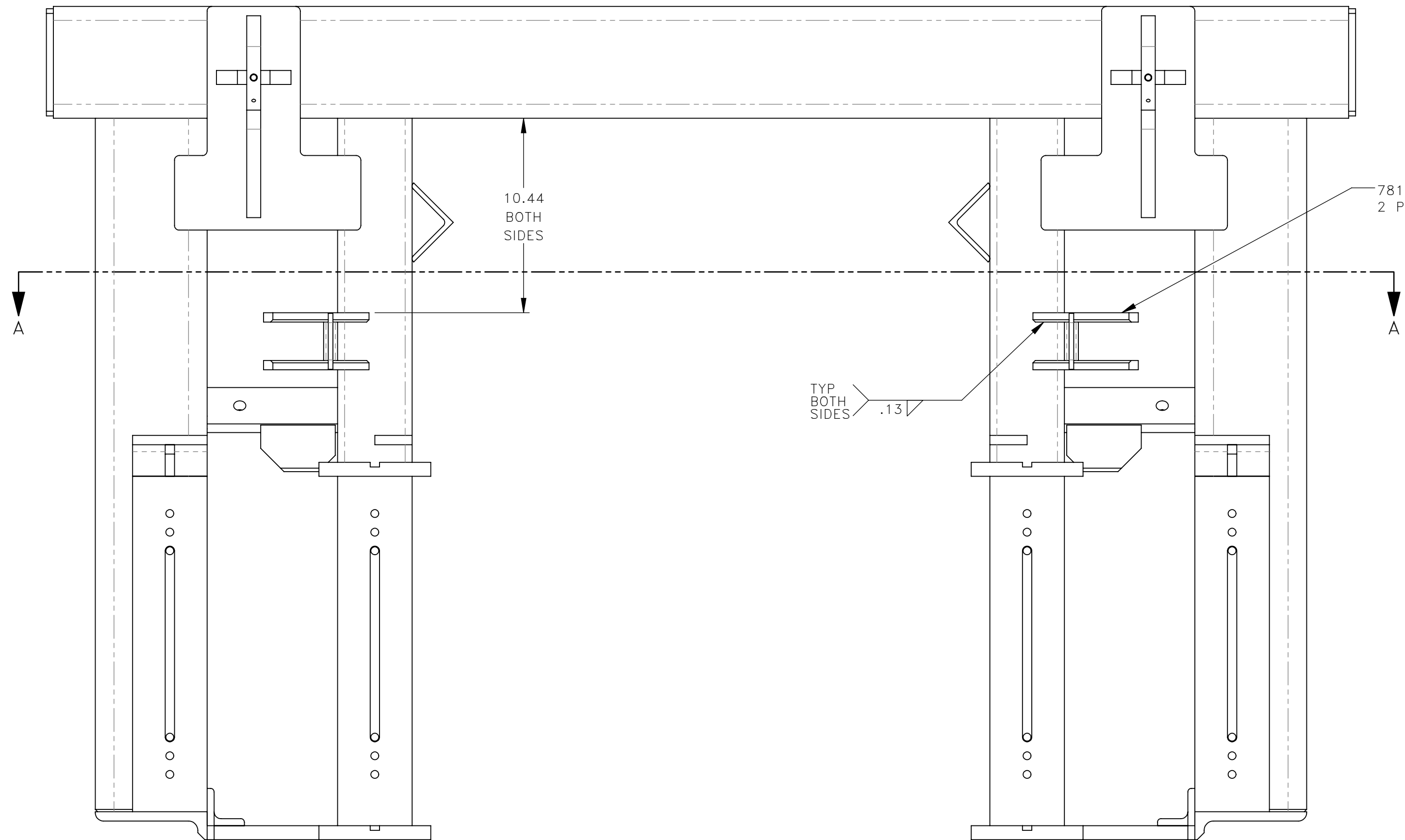


NO.	QTY	DESCRIPTION	PART NO.
1	REF	LATCH	318693
2	REF	LATCH	318694
3	REF	LATCH	318697
4	REF	NUT, HEX JAM: .5-20	401013
5	REF	FITTING, LUBE: .12 NPT(M)	401987
6	REF	NUT, HEX ES: .62-11 HVY	405325
7	REF	NUT, ACORN: .5-20	408649
8	REF	ELBOW, 90°: .25 NPT(M) X #4 JIC(M)	460203
9	REF	SCR, SOC SHLD: .75 X 3	466399
10	REF	CYLINDER, AIR: 1.75 X .5	466400
11	REF	SPRING, COMPRESSION	466406
12	REF	BRACKET, LATCH	781399



SECTION A-A



WELD LATCH BRACKET 781399 TO FRONT FRAME AS LOCATED

REV	EN	DESCRIPTION	DATE	DRN
1	3104	NEW RELEASE	4-18	MAE

DIMENSION TOLERANCES UNLESS OTHERWISE SPECIFIED

LINEAR	.XX=±.03	.XXX=±.010
ANGULAR	X°=±1°	X.X°=±.5°

SURFACE FINISH 125 ✓ NOT TO EXCEED SMOOTH ALL SHARP EDGES CLEAN ALL WELDS

THIS PRINT AND ALL INFORMATION WITHIN BELONGS TO RACINE RAILROAD PRODUCTS

RACINE RAILROAD PRODUCTS
RACINE, WISCONSIN USA

DESCRIPTION
INSTRUCTIONS, SETTER ARM LATCH

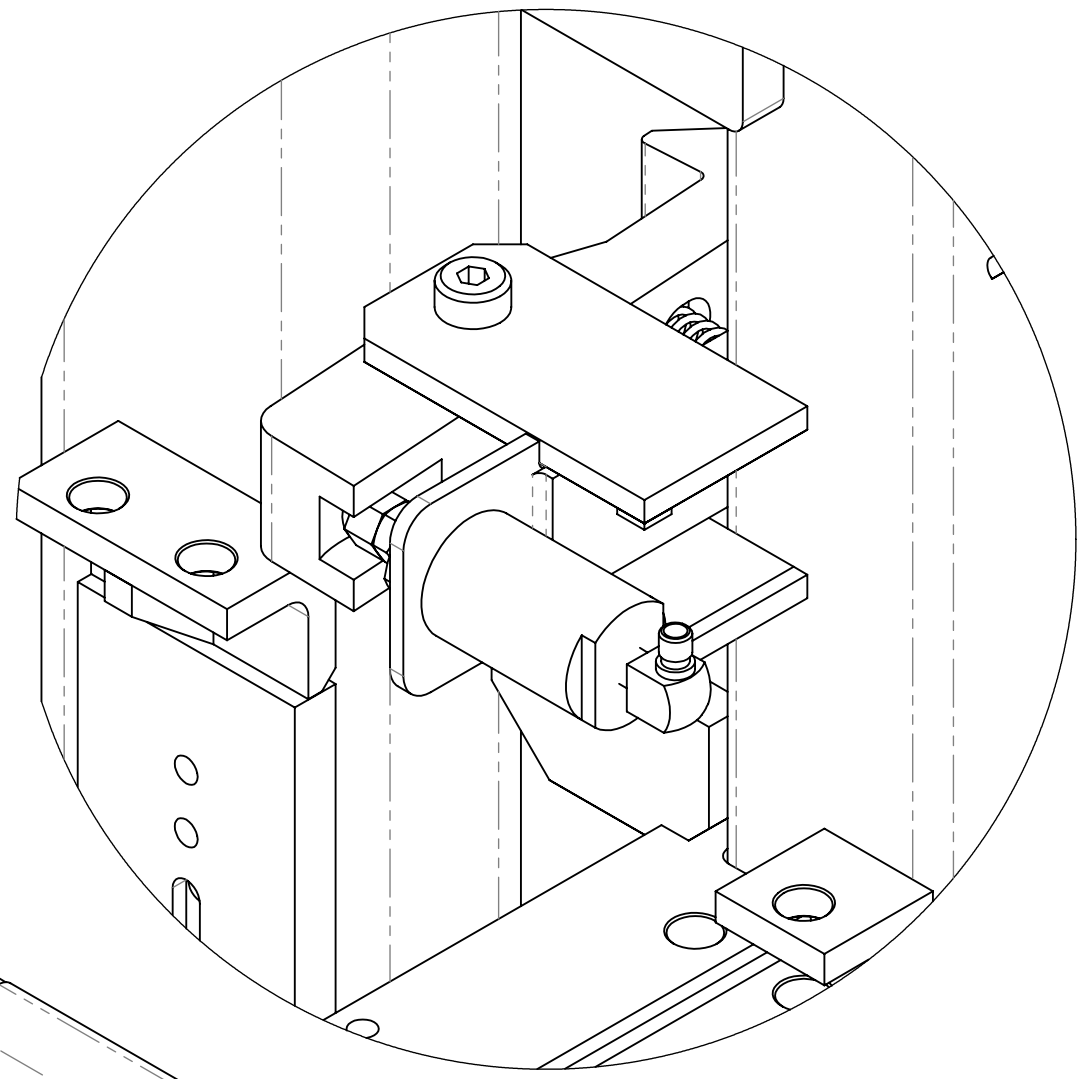
MATERIAL
SEE BOM

USED ON	SCALE	DATE
793019	1:5	04-24-18

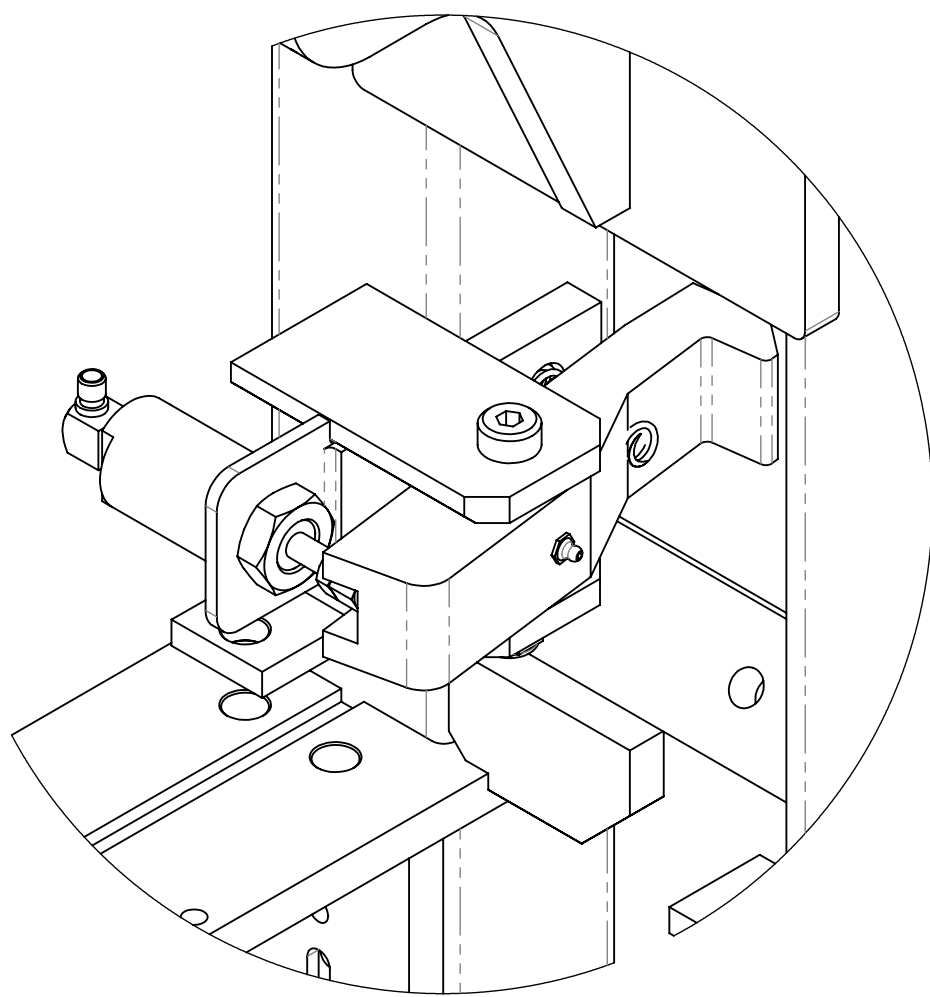
DRN	CHK	APP	JOB NO	SHEET
ME			RD150002	1 OF 4

EXP NO _____ DWG NO _____

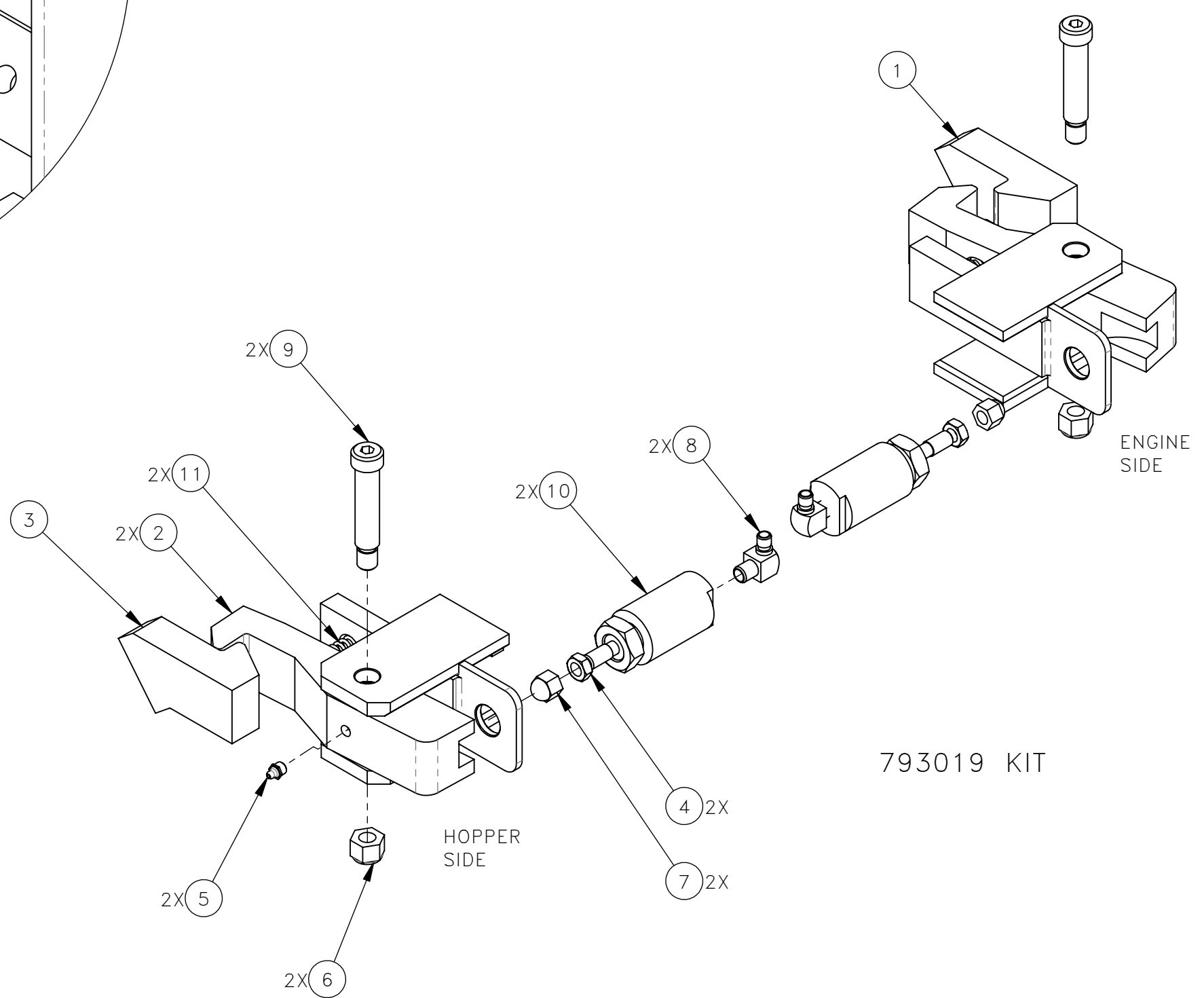
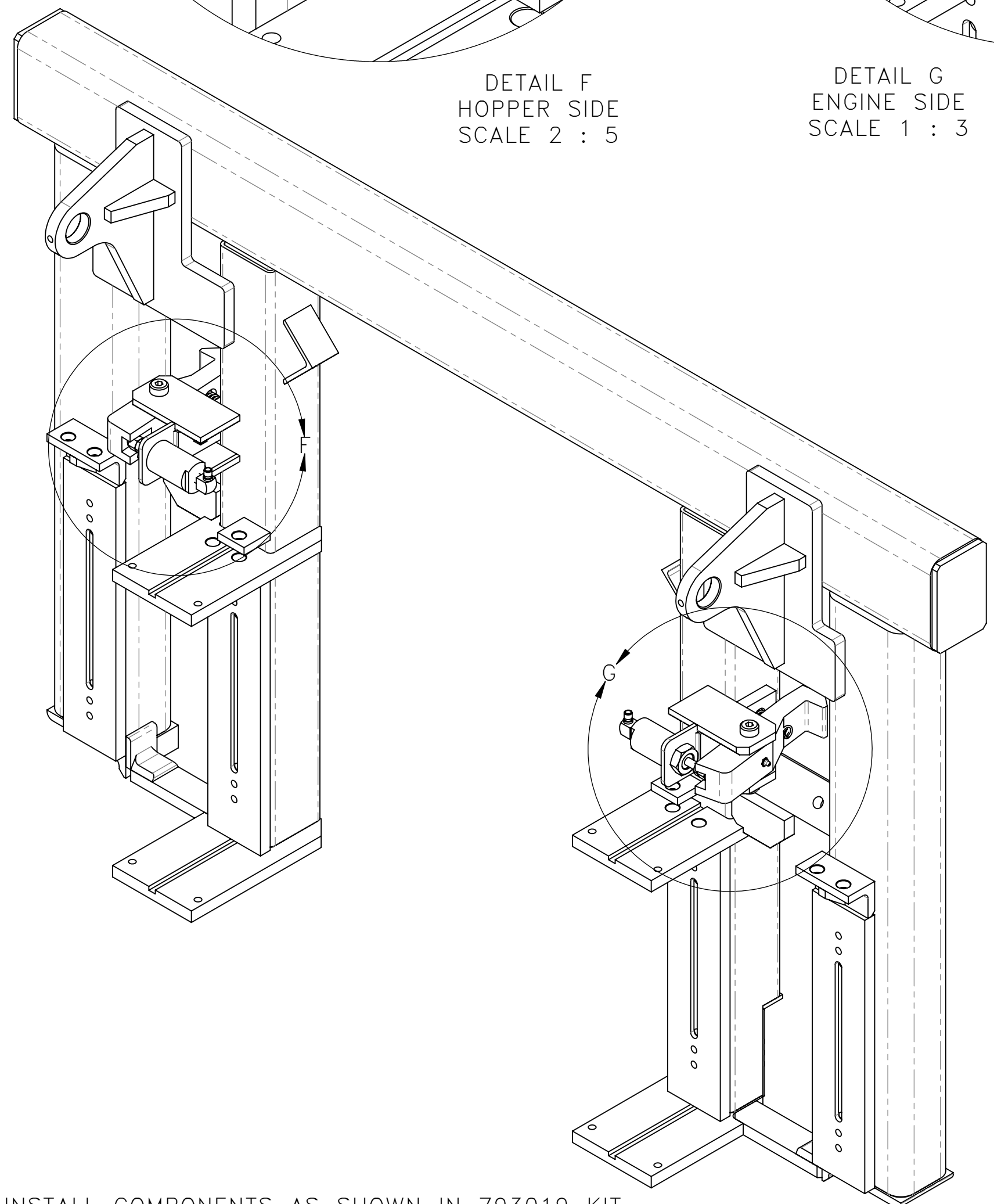
800279



DETAIL F
HOPPER SIDE
SCALE 2 : 5



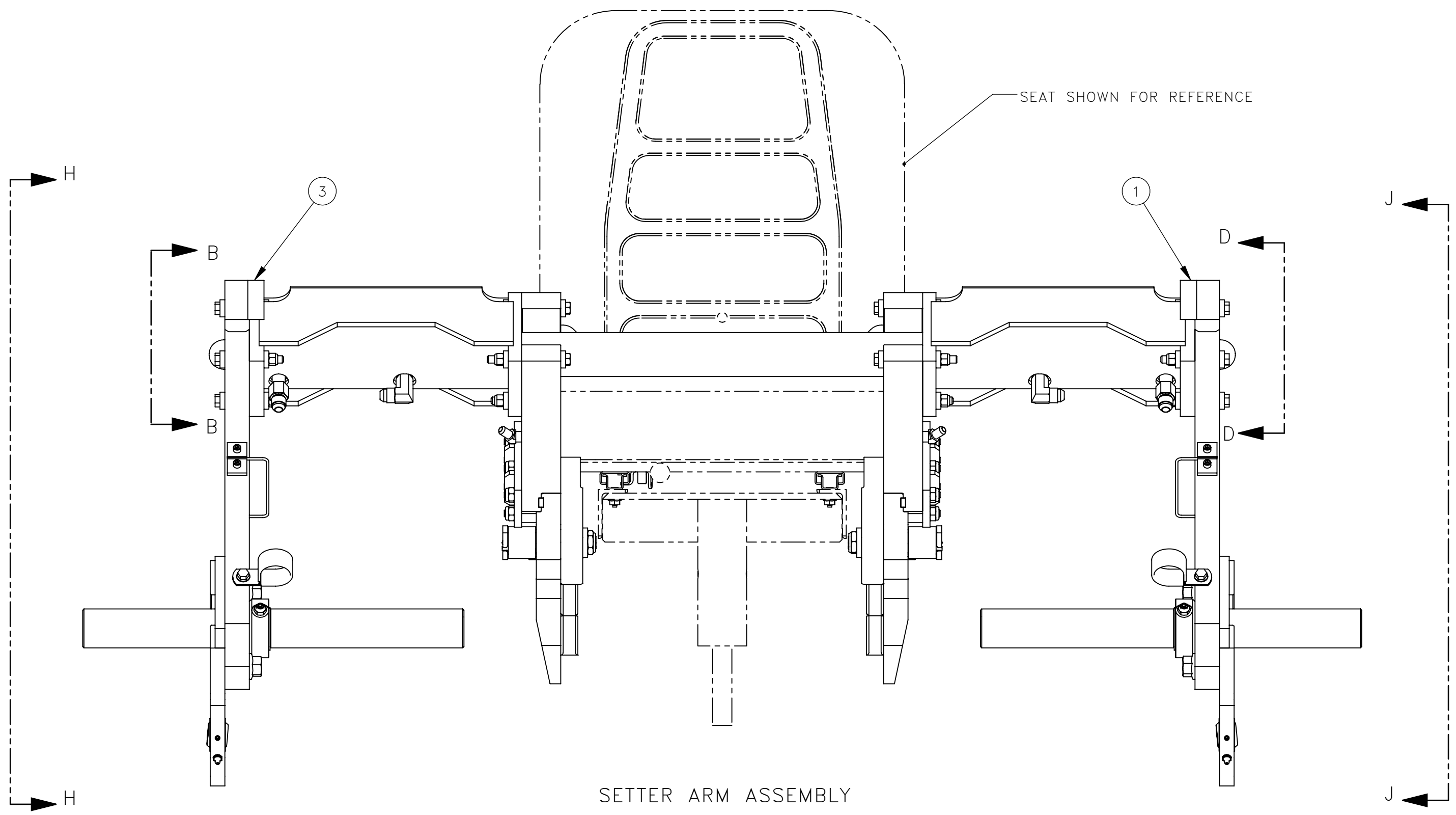
DETAIL G
ENGINE SIDE
SCALE 1 : 3



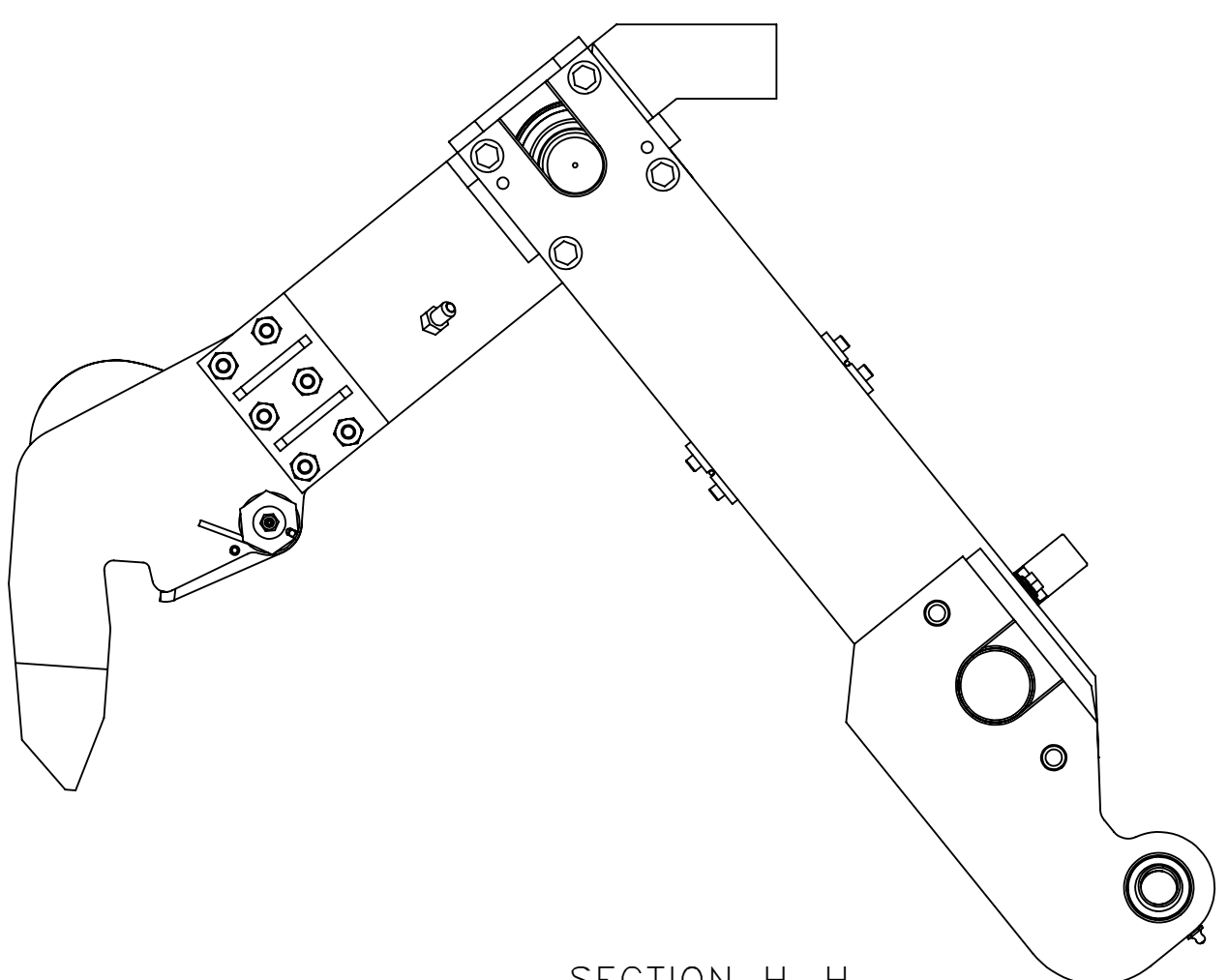
793019 KIT

INSTALL COMPONENTS AS SHOWN IN 793019 KIT

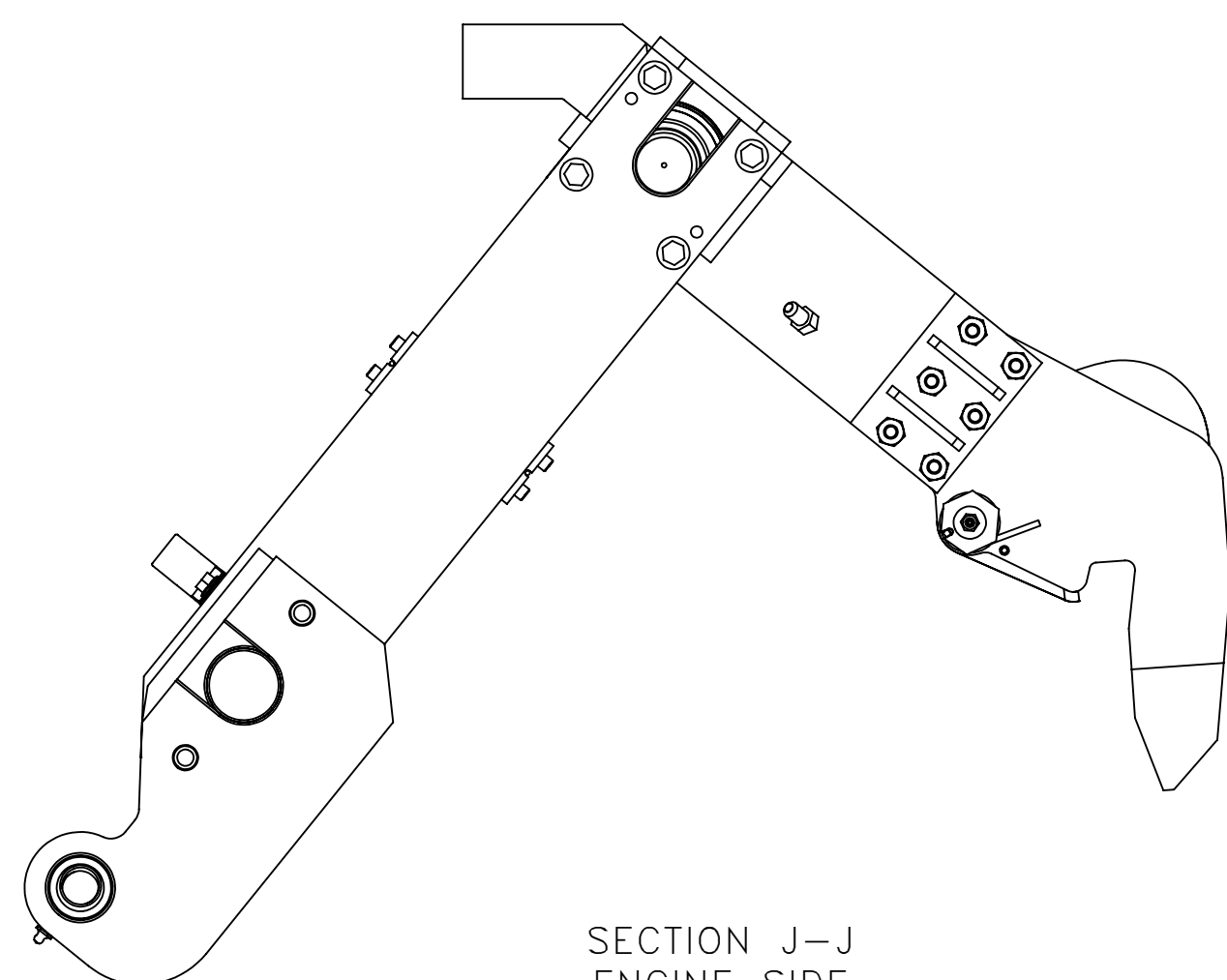
REV	EN	DESCRIPTION	DATE	DRN
1	3104	NEW RELEASE	4-18	MAE
DIMENSION TOLERANCES UNLESS OTHERWISE SPECIFIED				
LINEAR		.XX=±.03	.XXX=±.010	
ANGULAR		X°=±1°	X.X°=±.5°	
SURFACE FINISH NOT TO EXCEED		125 ✓	SMOOTH ALL SHARP EDGES CLEAN ALL WELDS	
THIS PRINT AND ALL INFORMATION WITHIN BELONGS TO RACINE RAILROAD PRODUCTS				
RACINE RAILROAD PRODUCTS				
RACINE, WISCONSIN USA				
DESCRIPTION				
INSTRUCTIONS, SETTER ARM LATCH				
MATERIAL				
SEE BOM				
USED ON		SCALE	DATE	
793019		1:5	04-24-18	
DRN	CHK	APP	JOB NO	SHEET
ME			RD150002	2 OF 4
EXP NO		DWG NO		
		800279		



SETTER ARM ASSEMBLY



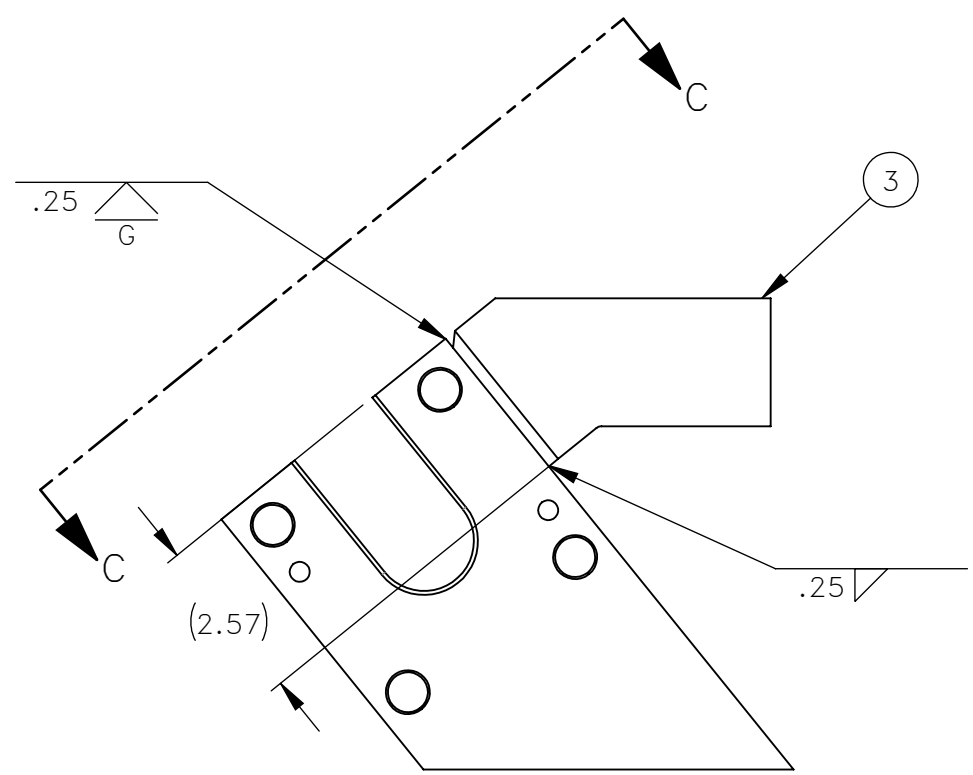
SECTION H-H
HOPPER SIDE



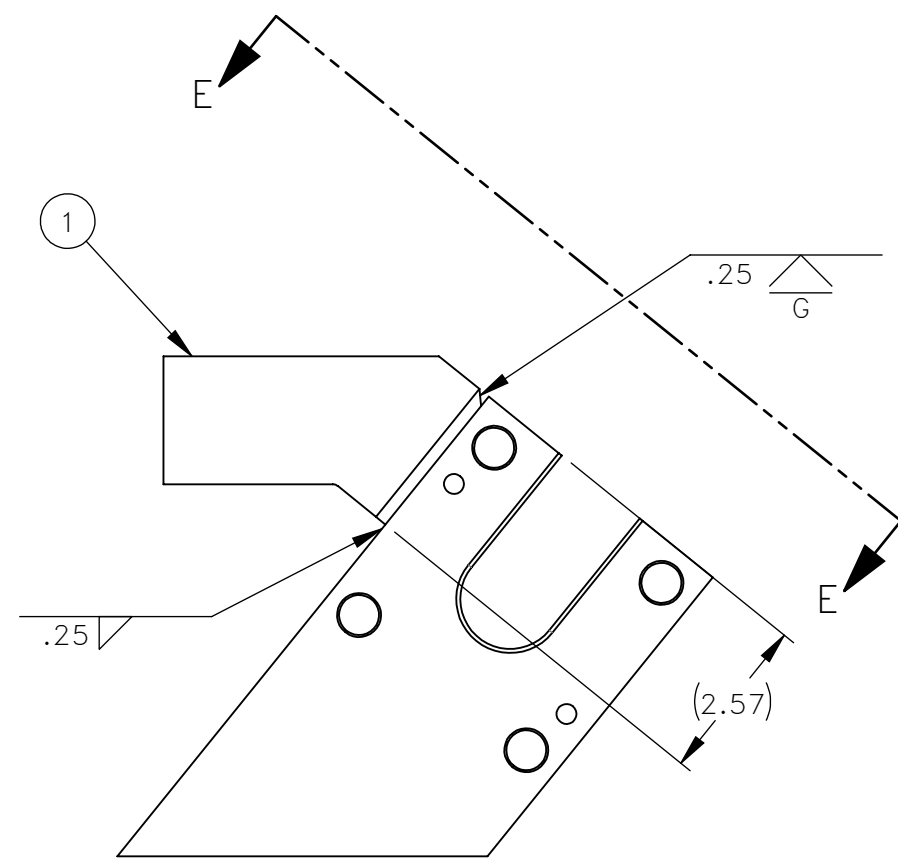
SECTION J-J
ENGINE SIDE

REV	EN	DESCRIPTION	DATE	DRN
1	3104	NEW RELEASE	4-18	MAE
DIMENSION TOLERANCES UNLESS OTHERWISE SPECIFIED				
LINEAR	.XX=±.03	.XXX=±.010		
ANGULAR	X°=±1°	X.X°=±.5°		
SURFACE FINISH NOT TO EXCEED	125 ✓	SMOOTH ALL SHARP EDGES CLEAN ALL WELDS		
THIS PRINT AND ALL INFORMATION WITHIN BELONGS TO RACINE RAILROAD PRODUCTS				
RACINE RAILROAD PRODUCTS RACINE, WISCONSIN USA				
DESCRIPTION				
KIT, SETTER ARM LATCH				
MATERIAL				
SEE BOM				
USED ON	915572	SCALE	DATE	
		1:5	04-24-18	
DRN	CHK	APP	JOB NO	SHEET
ME			RD150002	3 OF 4
EXP NO			DWG NO	
				793019

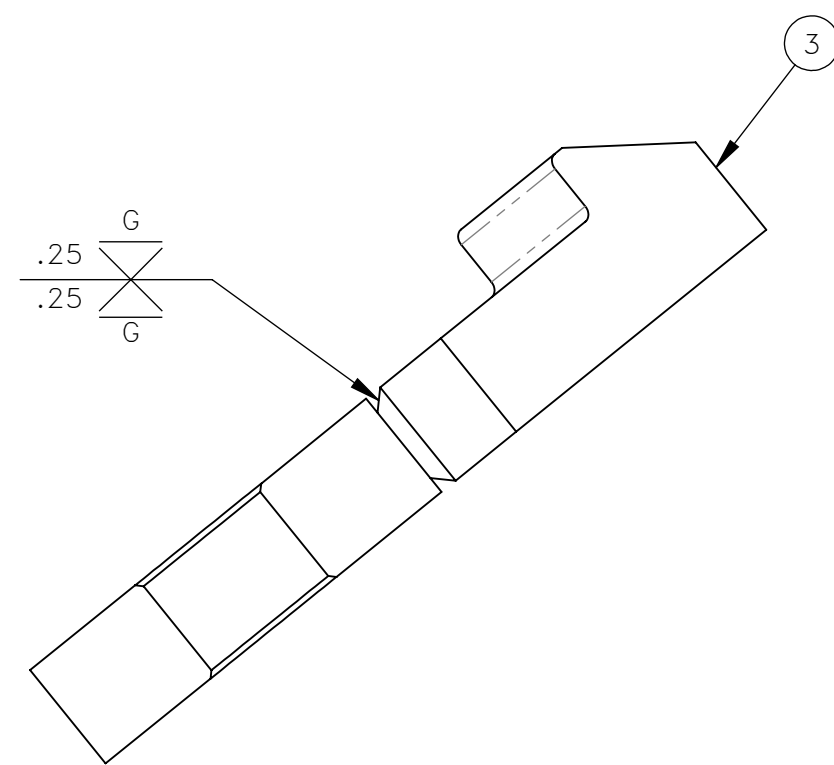
WELD SETTER ARM OUTER LATCHES
AS INDICATED



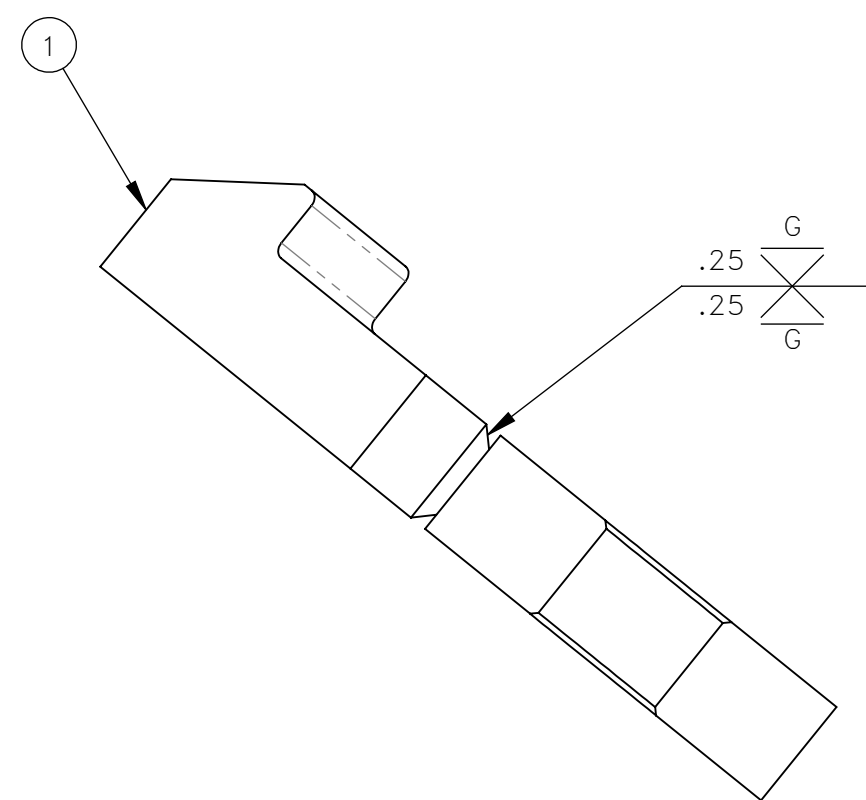
SECTION B-B
HOPPER SIDE ARM
SCALE 1 : 3



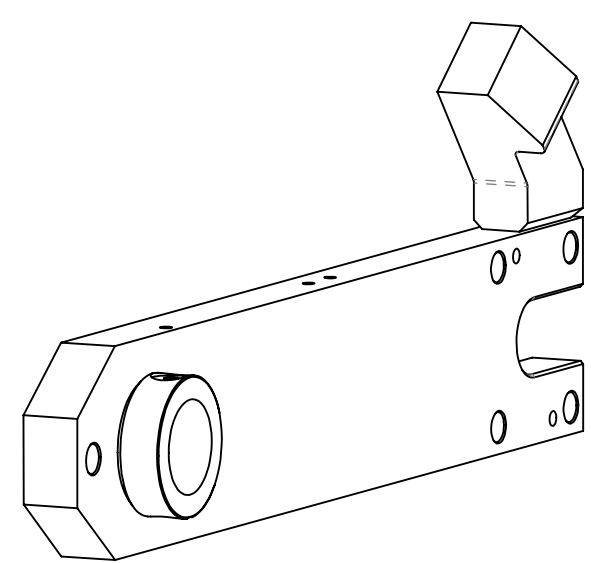
SECTION D-D
ENGINE SIDE ARM
SCALE 1 : 3



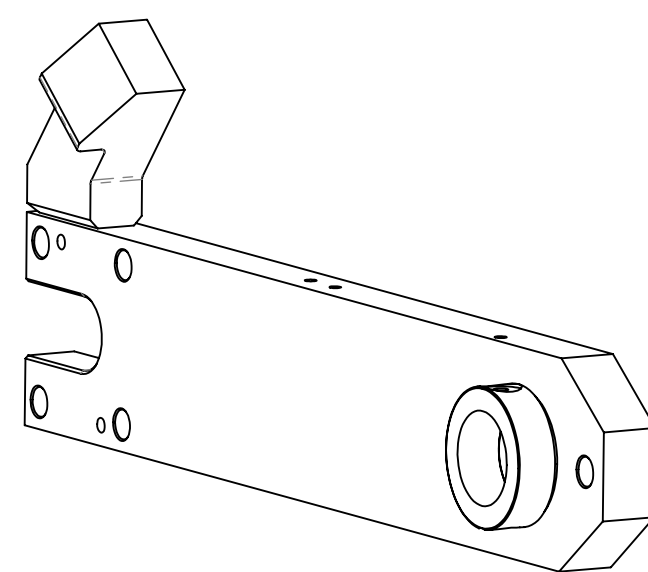
SECTION C-C
HOPPER SIDE ARM
SCALE 1 : 2



SECTION E-E
ENGINE SIDE ARM
SCALE 1 : 2



HOPPER SIDE ARM



ENGINE SIDE ARM

REV	EN	DESCRIPTION	DATE	DRN
1	3104	NEW RELEASE	4-18	MAE
DIMENSION TOLERANCES UNLESS OTHERWISE SPECIFIED				
LINEAR	.XX=±.03	.XXX=±.010		
ANGULAR	X°=±1°	X.X°=±.5°		
SURFACE FINISH NOT TO EXCEED	125 ✓	SMOOTH ALL SHARP EDGES CLEAN ALL WELDS		
THIS PRINT AND ALL INFORMATION WITHIN BELONGS TO RACINE RAILROAD PRODUCTS				
RACINE RAILROAD PRODUCTS RACINE, WISCONSIN USA				
DESCRIPTION KIT, SETTER ARM LATCH				
MATERIAL SEE BOM				
USED ON	915572	SCALE 1:5	DATE 04-24-18	
DRN ME	CHK	APP	JOB NO RD150002	SHEET 4 OF 4
EXP NO			DWG NO 793019	