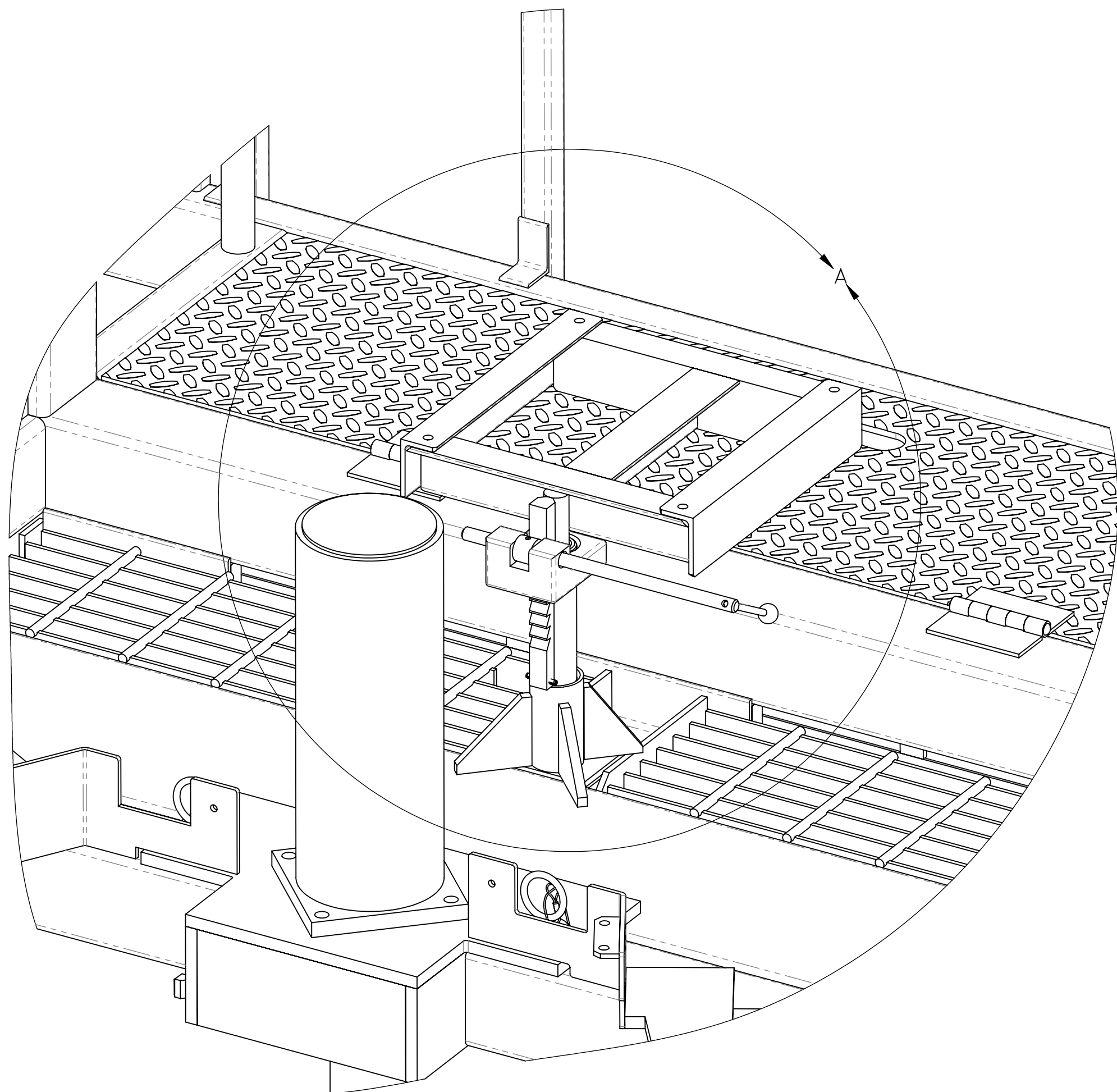


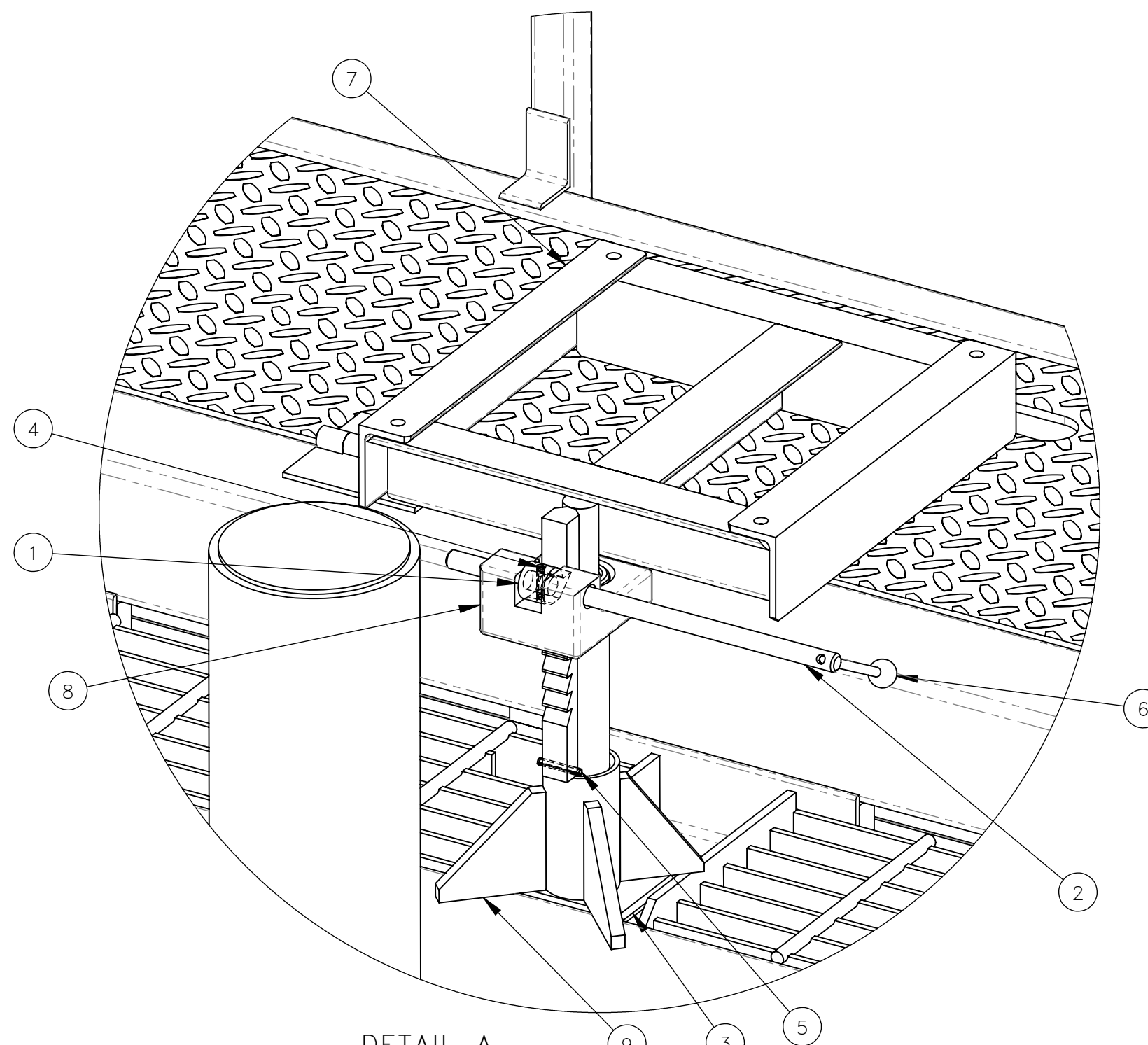


INSTRUCTIONS:

1. DISCONNECT HOSES FROM THE TURNTABLE NOTING HOSE LOCATIONS FOR PROPER REASSEMBLY.
2. REMOVE LOADER ASSEMBLY AND DISCONNECT HOSES NOTING HOSE LOCATIONS.
3. REMOVE GRATING ON THE RIGHT SIDE SO THE HOSES CAN BE REROUTED.
4. MODIFY GRATING AS SHOWN ON SHEET 2 TO ALLOW NEW HOSE ROUTING.
5. REMOVE HOSES FROM THE SEAT MOUNT AREA TO PREVENT DAMAGE DURING WELDING AND CUTTING.
6. REMOVE SEAT FROM SEAT POST.
7. REMOVE SEAT FROM ORIGINAL SEAT FRAME AND INSTALL ON SUPPLIED FRAME.
8. CUT THE SEAT POST AT LEAST .25" BELOW CURRENT DECKING.
9. WELD PROVIDED FLAT IN PLACE OF THE OLD SEAT POST. TAKE CARE TO ENSURE FLAT IS FLUSH WITH EXISTING DECKING
10. WELD PEDESTAL BASE IN THE SAME LOCATION AS THE OLD SEAT POST (DIMENSIONS SHOWN ON SHEET 2).
11. ROUTE HOSES TO THE LOADER ASSEMBLY, CONNECT HOSES, AND REINSTALL THE ASSEMBLY. TAKE CARE TO NOTE THE LOADER ARM LOCATIONS.
12. ROUTE HOSES TO THE TURNTABLE CYLINDERS AND RECONNECT THEM.
13. ASSEMBLE THE INTERMEDIATE SEAT FRAME USING THE PROVIDED PINS.
14. INSTALL INTERMEDIATE SEAT FRAME THAT WAS ASSEMBLED IN STEP 13.
15. INSTALL THE SEAT AND FRAME THAT WAS ASSEMBLED IN STEP 7.
16. INSTALL RETAINING PIN ON THE BOTTOM OF THE RATCHET ASSEMBLY.



NO.	QTY	DESCRIPTION	PART NO.
1	REF	LATCH	318939
2	REF	ROD, HANDLE	318941
3	REF	FLAT	319532
4	REF	PIN, ROLL: .19 X 88	401719
5	REF	PIN, ROLL: .19 X 1.25	401722
6	REF	HANDLE	473573
7	REF	MOUNT, SEAT	781444
8	REF	POST, SEAT	781448
9	REF	GUIDE, SEAT POST	781456



DETAIL A
NEW SEAT POST
INSTALLED VIEW
SCALE 1 : 3.5

REV	EN	DESCRIPTION	DATE	DRN
1	3186	NEW RELEASE	6-18	MAE
2	3728	SEE EN3728 FOR DETAILS	11-18	DJW

DIMENSION TOLERANCES UNLESS OTHERWISE SPECIFIED

LINEAR	.XX=±.03	.XXX=±.010
ANGULAR	X°=±1°	X.X°=±.5°

SURFACE FINISH 125 ✓ SMOOTH ALL SHARP EDGES
NOT TO EXCEED CLEAN ALL WELDS

THIS PRINT AND ALL INFORMATION WITHIN
BELONGS TO RACINE RAILROAD PRODUCTS

RACINE RAILROAD PRODUCTS

RACINE, WISCONSIN USA

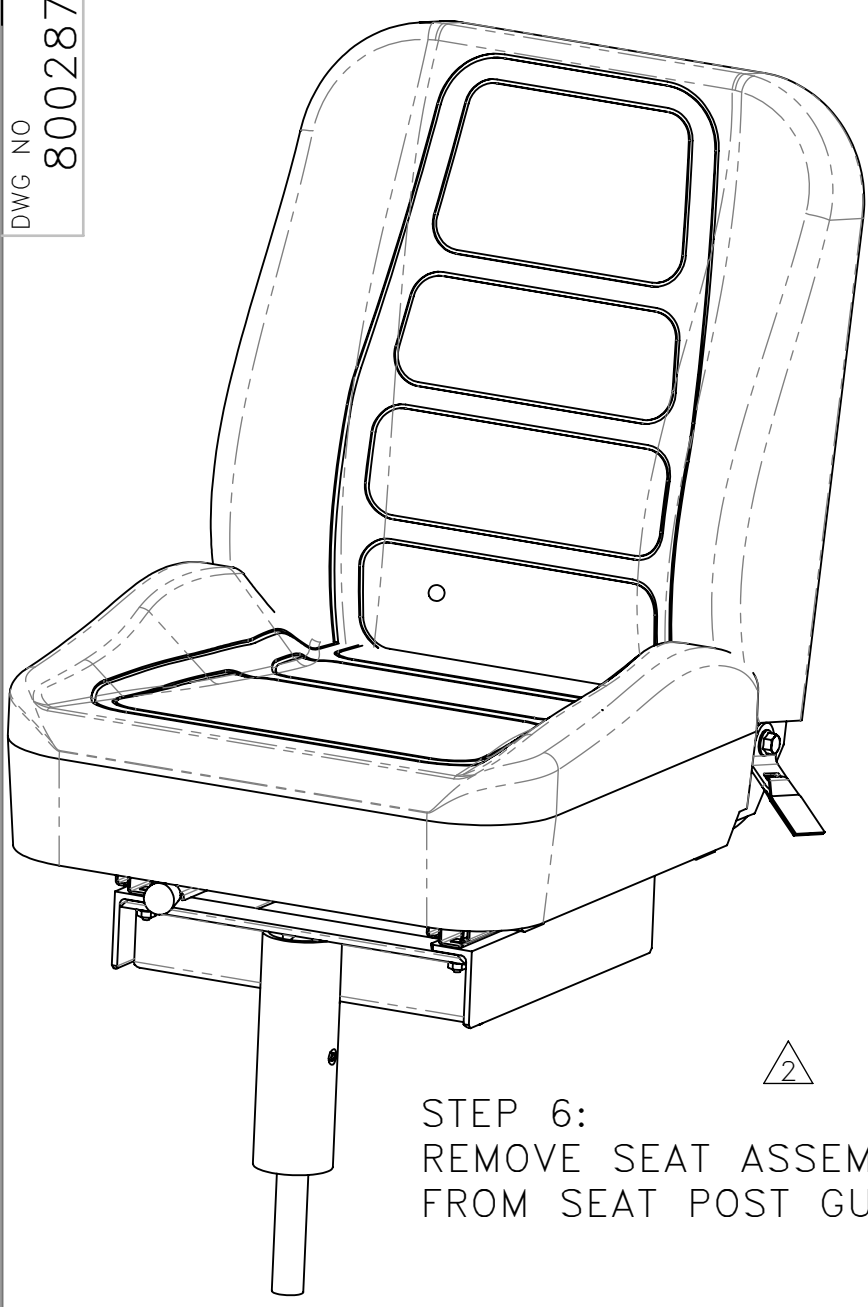
DESCRIPTION
INSTRUCTIONS, SEAT

MATERIAL
SEE BOM

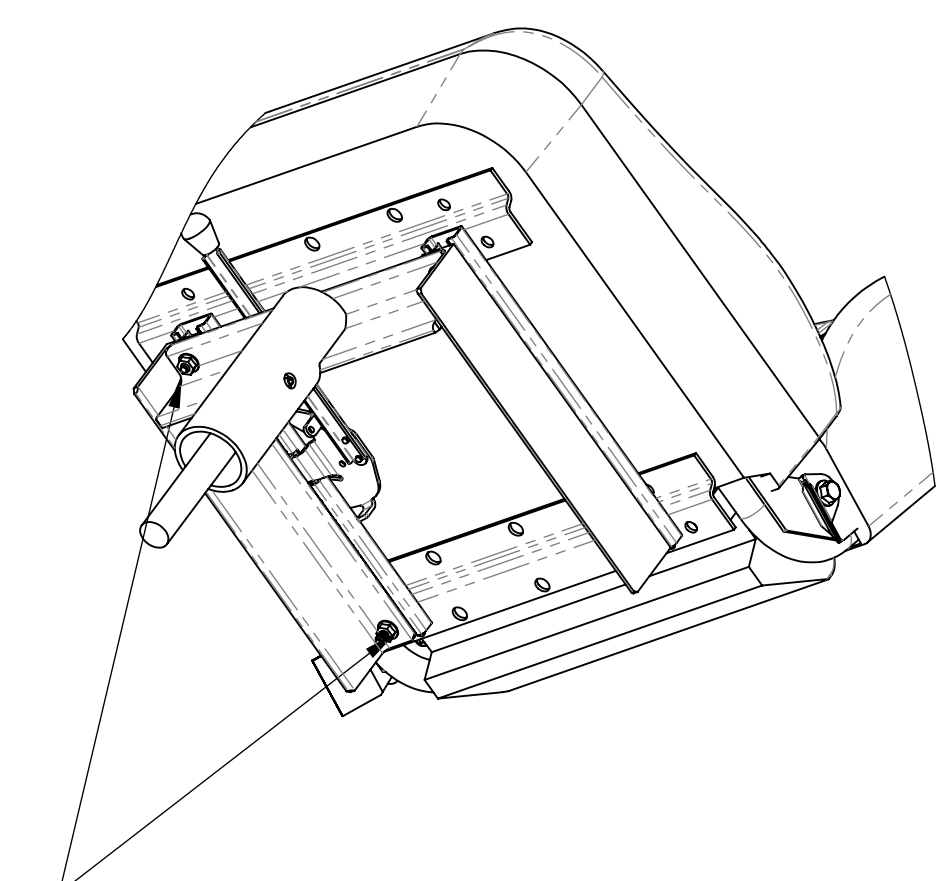
USED ON	793027	SCALE	1:4	DATE	06-05-18
---------	--------	-------	-----	------	----------

DRN	ME	CHK	APP	JOB NO	RD150002	SHEET	1 OF 3
-----	----	-----	-----	--------	----------	-------	--------

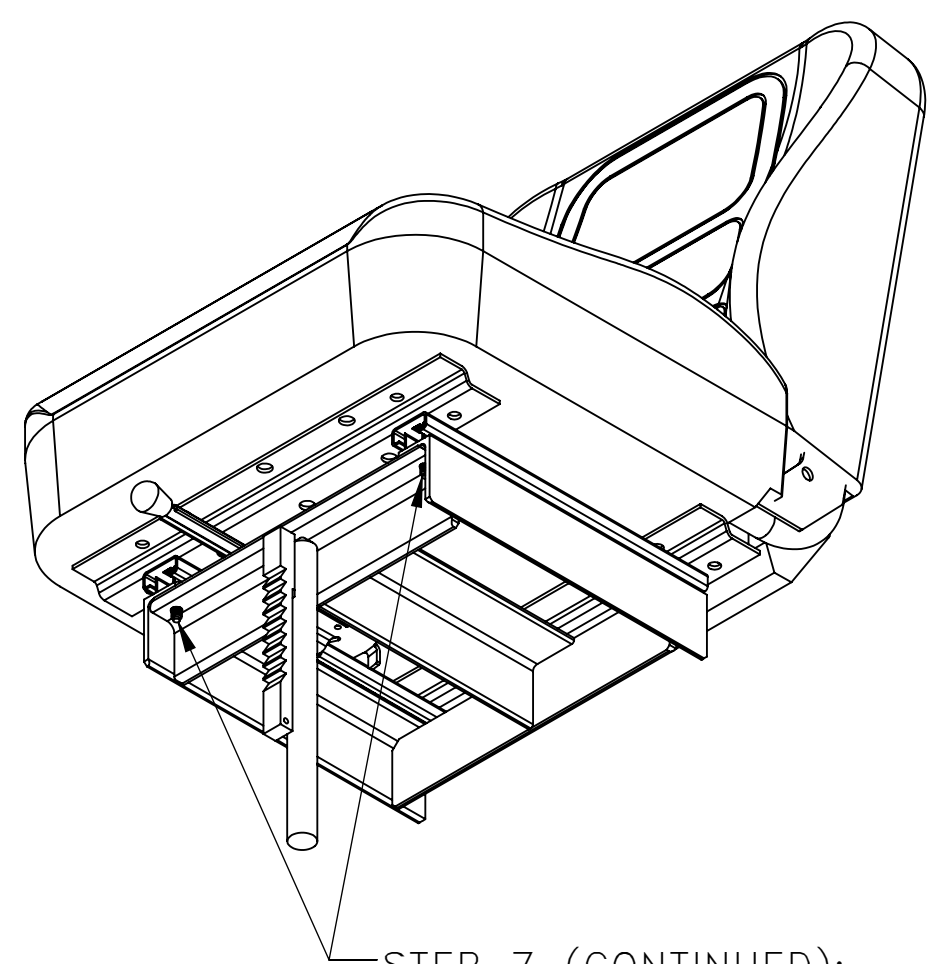
EXP NO		DWG NO	800287
--------	--	--------	--------



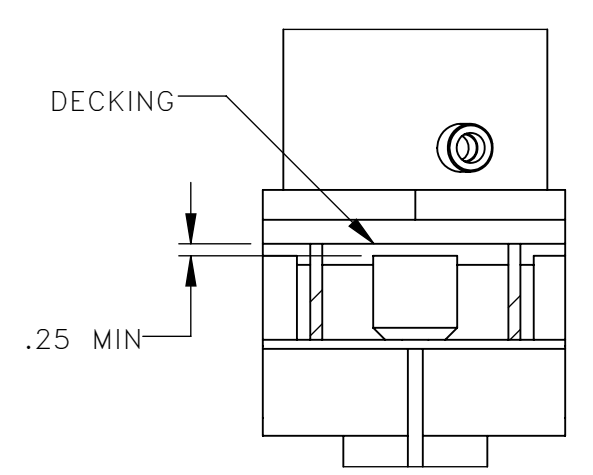
STEP 6:
REMOVE SEAT ASSEMBLY
FROM SEAT POST GUIDE



STEP 7:
REMOVE SEAT FROM ORIGINAL
BRACKET. KEEP NUTS AND BOLTS
4 BOLTS, AND 4 NUTS



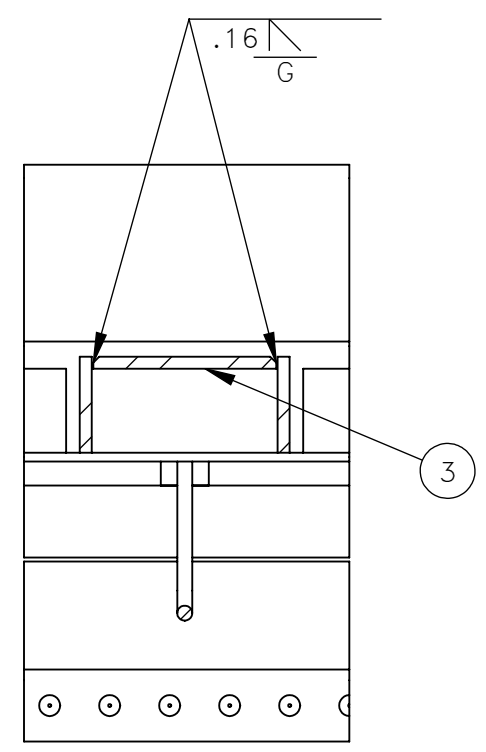
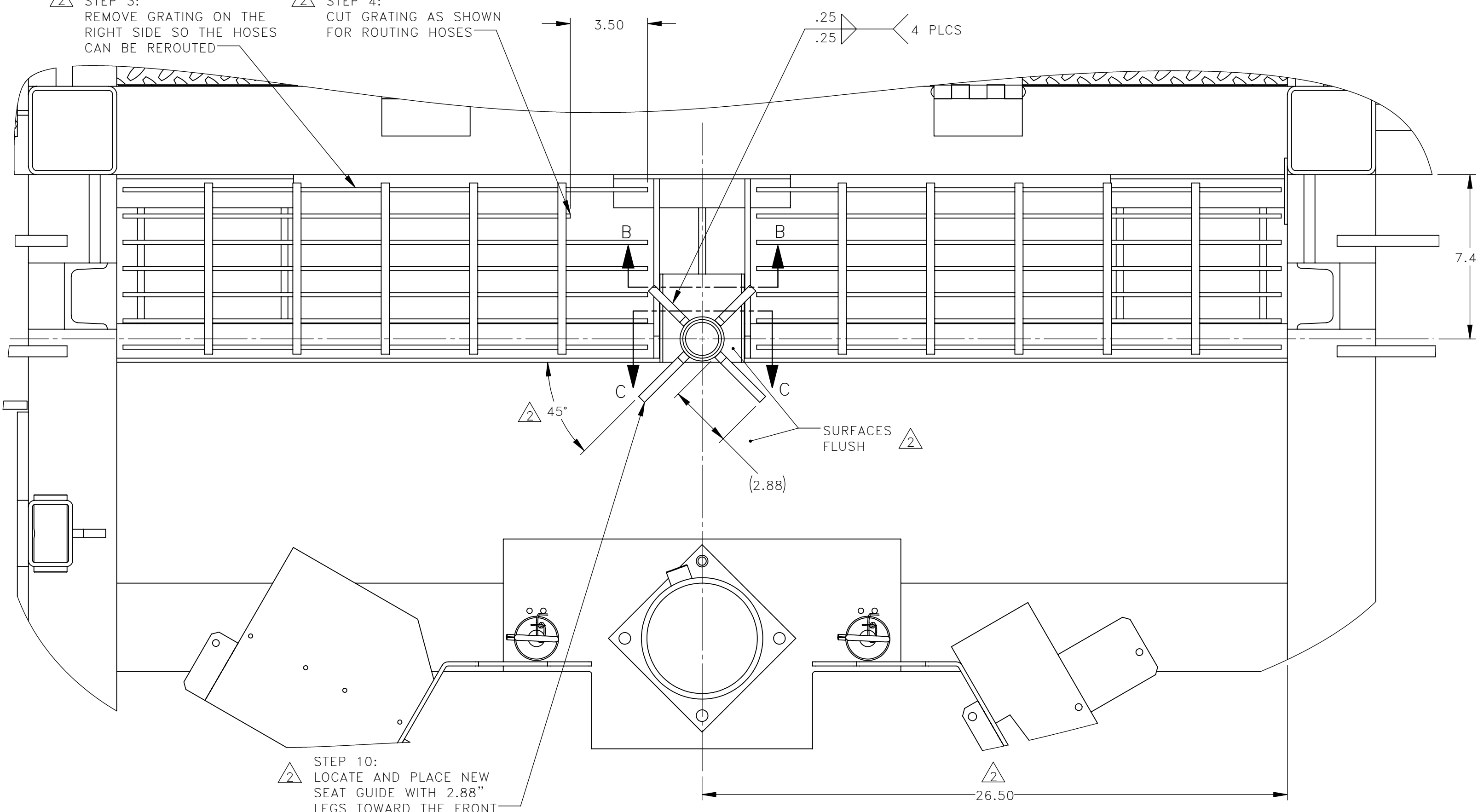
STEP 7 (CONTINUED):
INSTALL SEAT ON SUPPLIED
FRAME USING HARDWARE
FROM ORIGINAL FRAME



SECTION C-C \curvearrowright 180°
STEP 8: CUT SEAT POST
AT LEAST .25" BELOW
CURRENT DECKING.
(FLAT AND NEW SEAT
POST HIDDEN FOR CLARITY)

STEP 3:
REMOVE GRATING ON THE
RIGHT SIDE SO THE HOSES
CAN BE REROUTED

STEP 4:
CUT GRATING AS SHOWN
FOR ROUTING HOSES



SECTION B-B
STEP 9: WELD FLAT TO MACHINE
FRAME PRIOR TO WELDING ON
THE SEAT POST GUIDE

STEP 10:
LOCATE AND PLACE NEW
SEAT GUIDE WITH 2.88"
LEGS TOWARD THE FRONT

REV	EN	DESCRIPTION	DATE	DRN
1	3186	NEW RELEASE	6-18	MAE
2	3728	SEE EN3728 FOR DETAILS	11-18	DJW

DIMENSION TOLERANCES UNLESS OTHERWISE SPECIFIED

LINEAR	.XX=±.03	.XXX=±.010
ANGULAR	X°=±1°	X.X°=±.5°

SURFACE FINISH 125 ✓ SMOOTH ALL SHARP EDGES
NOT TO EXCEED CLEAN ALL WELDS

THIS PRINT AND ALL INFORMATION WITHIN
BELONGS TO RACINE RAILROAD PRODUCTS

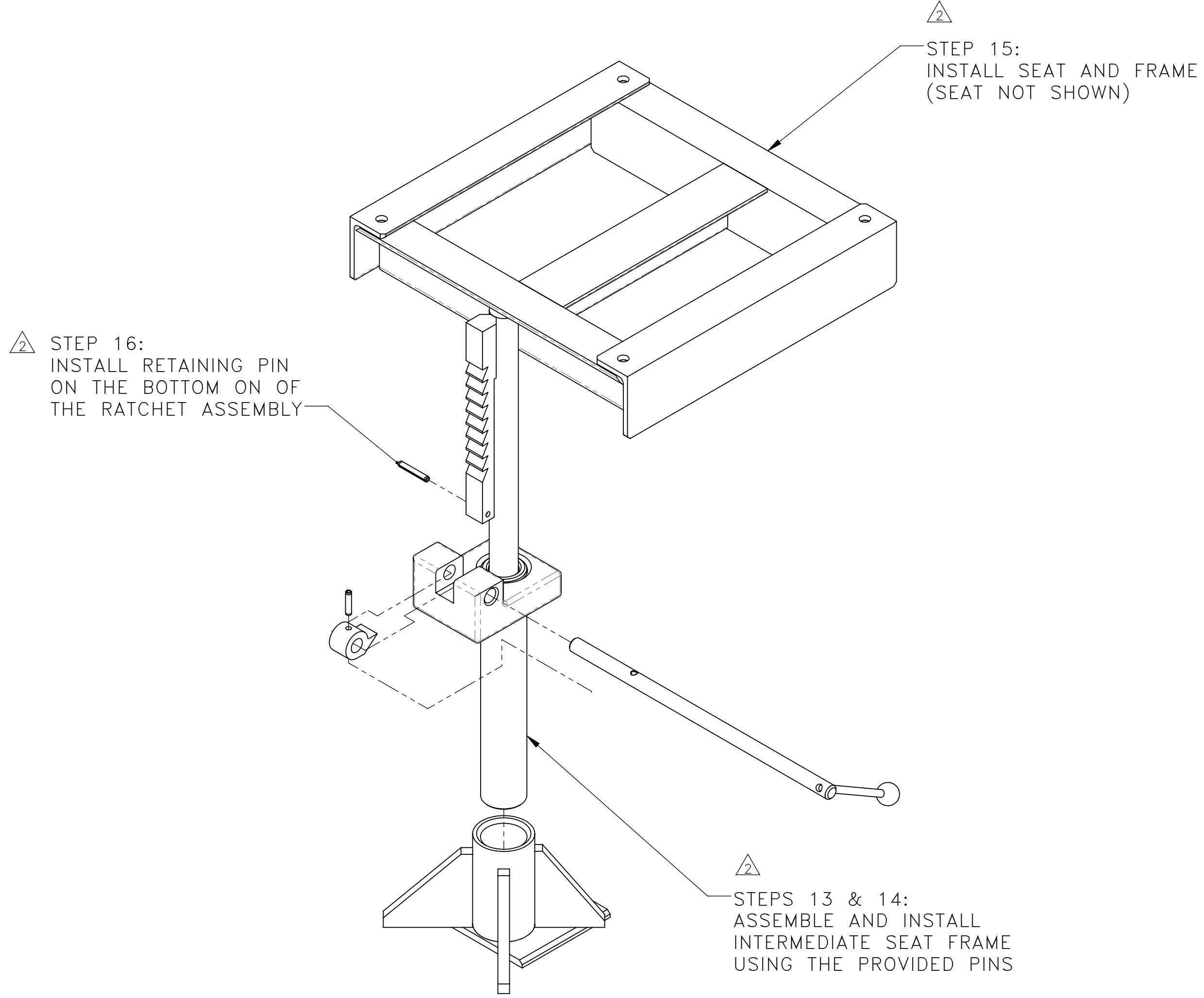
RACINE RAILROAD PRODUCTS
RACINE, WISCONSIN USA

DESCRIPTION
INSTRUCTIONS, SEAT

MATERIAL
SEE BOM

USED ON	793027	SCALE	1:4	DATE	06-05-18
---------	--------	-------	-----	------	----------

DRN	ME	CHK	APP	JOB NO	RD150002	SHEET	2 OF 3
EXP NO				DWG NO			



REV	EN	DESCRIPTION	DATE	DRN
1	3186	NEW RELEASE	6-18	MAE
2	3728	SEE EN3728 FOR DETAILS	11-18	DJW

DIMENSION TOLERANCES UNLESS OTHERWISE SPECIFIED			
LINEAR	.XX=±.03	.XXX=±.010	
ANGULAR	X°=±1°	X.X°=±.5°	

SURFACE FINISH 125 ✓
NOT TO EXCEED SMOOTH ALL SHARP EDGES
CLEAN ALL WELDS

THIS PRINT AND ALL INFORMATION WITHIN
BELONGS TO RACINE RAILROAD PRODUCTS

RACINE RAILROAD PRODUCTS
RACINE, WISCONSIN USA

DESCRIPTION
INSTRUCTIONS, SEAT

MATERIAL
SEE BOM

USED ON	SCALE	DATE
793027	1:4	06-05-18

DRN	CHK	APP	JOB NO	SHEET
ME			RD150002	3 OF 3

EXP NO	DWG NO
	800287