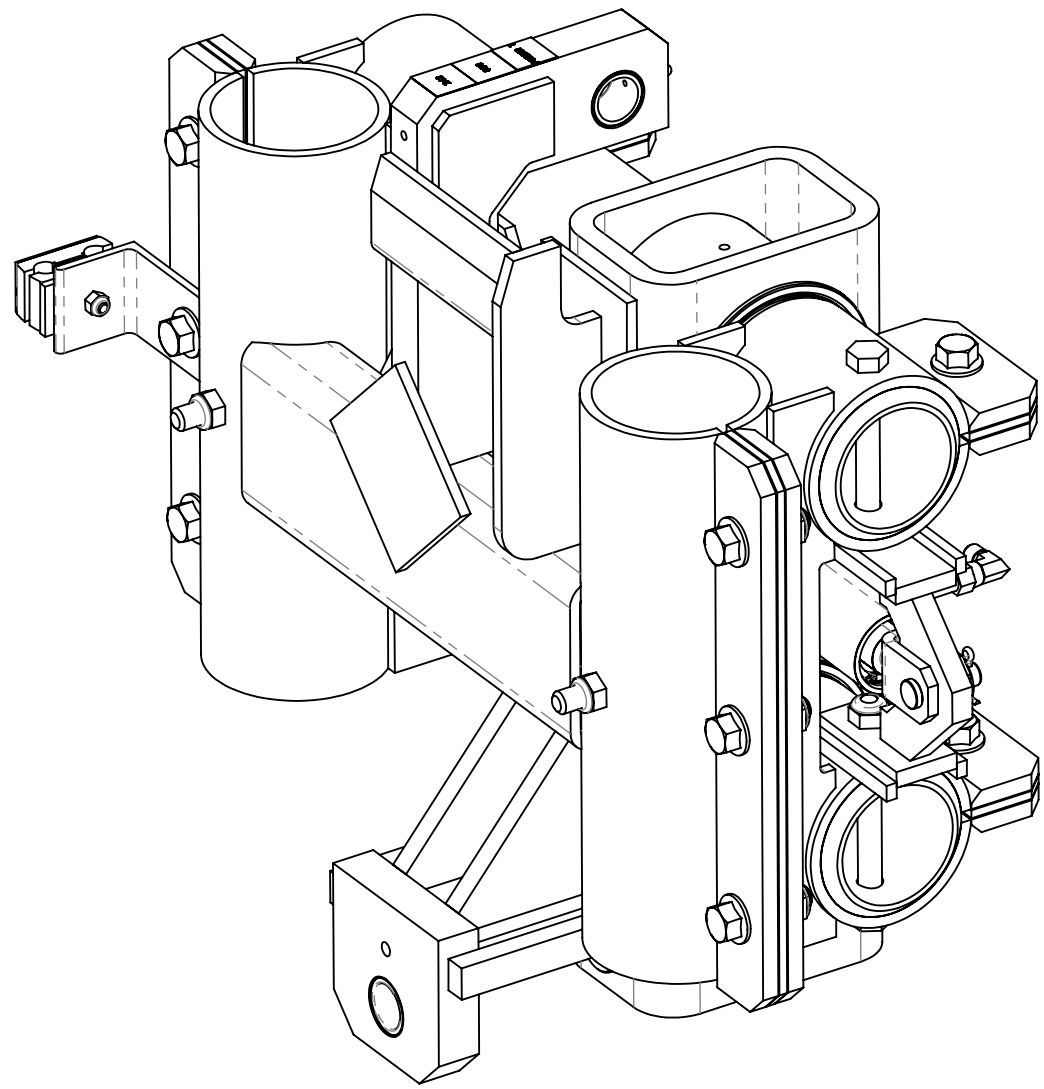


THESE INSTRUCTIONS ARE FOR KIT 793029 (2 KITS PER WORKHEAD)



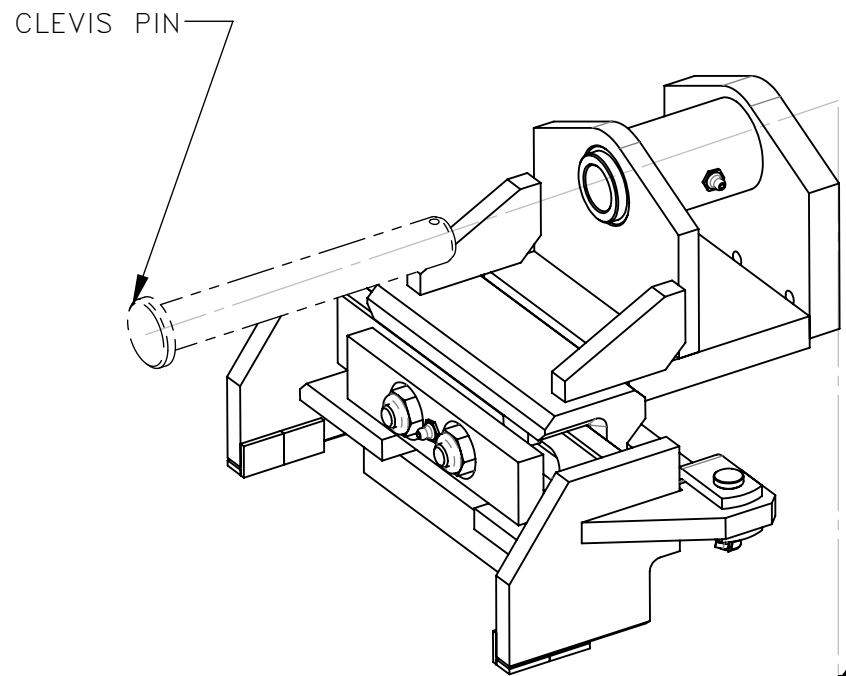
REMOVAL:

1. POWER OFF MACHINE AND TAG OUT BEFORE PERFORMING CONVERSION.
2. REMOVE HYDRAULIC HOSES, LABEL IF NECESSARY.
3. REMOVE CLAMP PLATE AND KEEP EXISTING FASTENERS (SEE EXPLODED ISO VIEW A).

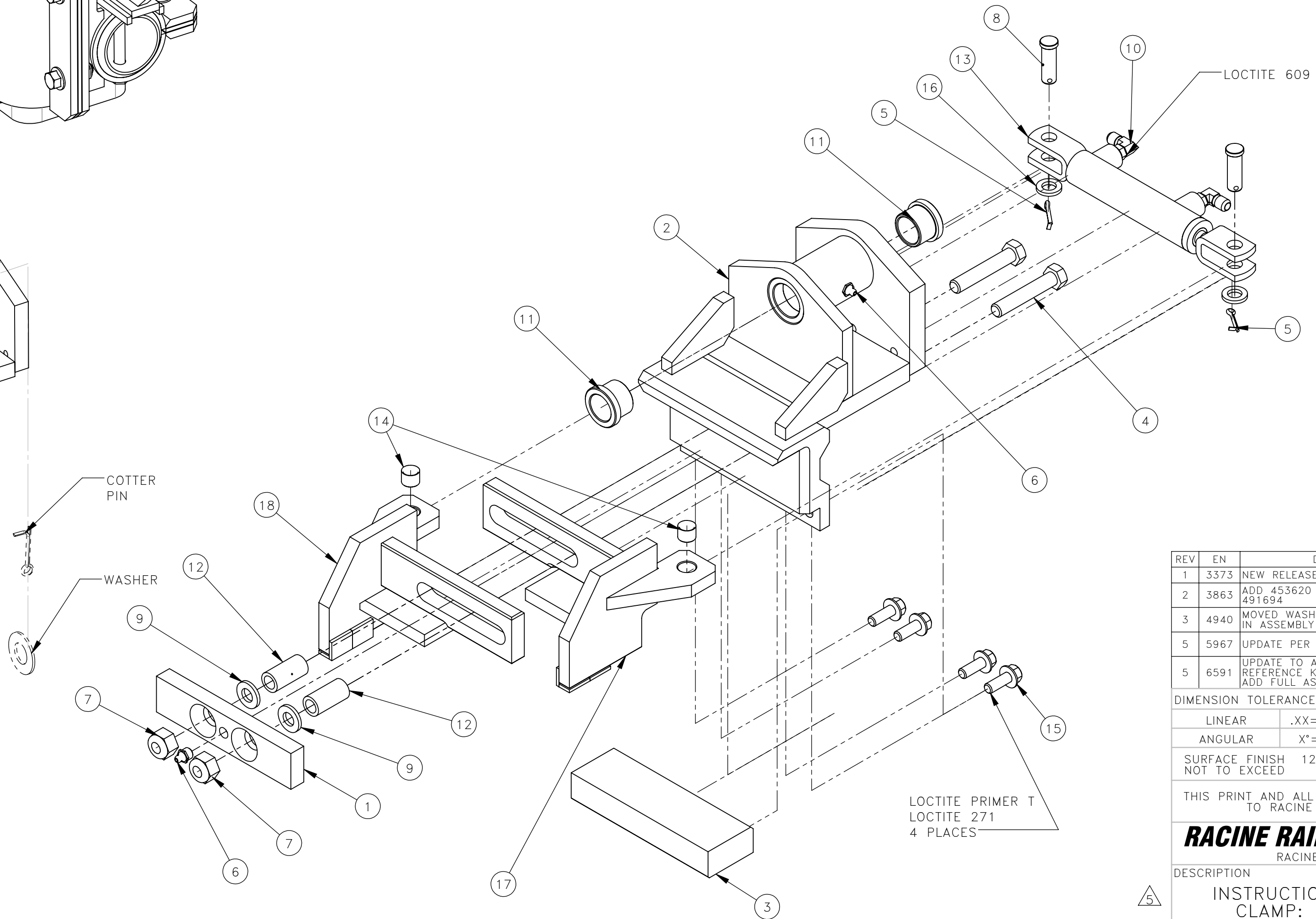
INSTALLATION:

1. REASSEMBLE PLATE CLAMP FOR USE WITH SMALL 9 X 6.5 TIE PLATE (SEE ISO VIEW B).
2. REATTACH TO GUIDE MECHANISM PER EXPLODED ISO VIEW A.
3. REATTACH HOSES TO CYLINDER.
4. PRIME ANY NECESSARY FLUID LINES.
5. LUBRICATE ALL CLAMP ASSEMBLIES.
6. POWER ON MACHINE.

NO.	QTY	DESCRIPTION	PART NO.
1	REF	PLATE, LUBE	311259
2	REF	HEAD, PLATE CLAMP	311260
3	REF	PLATE, PUSH	319170
4	REF	SCR, HEX: .5-13 X 2.75	400753
5	REF	PIN, COTTER: .12 X 1	400900
6	REF	FITTING, LUBE: .12 NPT(M)	401987
7	REF	NUT, HEX ES JAM: .5-13 HVY	403900
8	REF	PIN, CLEVIS: .5 X 1.5	453620
9	REF	WASHER, FLT: .5	454817
10	REF	ELBOW, 90°: #4 JIC(M) X #4 SAE(M)	459812
11	REF	BRG, SHLD SLV: 1 ID STEEL	462748
12	REF	BRG, SLV: .5 ID STEEL	464611
13	REF	CYLINDER, HYDR: 1 X 3	465991
14	REF	BRG, SLV: .5 ID STEEL	466021
15	REF	SCR, HEX FLG: .38-16 X 1	491187
16	REF	WASHER, FLT: .5	491694
17	REF	CLAMP	781504
18	REF	CLAMP	781505



EXPLODED ISO VIEW A



EXPLODED ISO VIEW B

REV	EN	DESCRIPTION	DATE	DRN
1	3373	NEW RELEASE	8-18	MSO
2	3863	ADD 453620 459812 465991 491694	1-19	MSO
3	4940	MOVED WASH TO CORRECT LOCATION IN ASSEMBLY	4-20	TDM
5	5967	UPDATE PER 793029 PER ECR6429	10-21	PR
5	6591	UPDATE TO A FULL ASSEMBLY REFERENCE KIT BOM; DESCRIPTION ADD FULL ASSEMBLY	11-22	PR

DIMENSION TOLERANCES UNLESS OTHERWISE SPECIFIED

LINEAR	.XX=±.03	.XXX=±.010	KERF ALLOW.
ANGULAR	X°=±1°	X.X°=±.5°	

SURFACE FINISH 125/ NOT TO EXCEED ✓ SMOOTH ALL SHARP EDGES CLEAN ALL WELDS

THIS PRINT AND ALL INFORMATION WITHIN BELONGS TO RACINE RAILROAD PRODUCTS

RACINE RAILROAD PRODUCTS
RACINE, WISCONSIN USA

DESCRIPTION
INSTRUCTIONS, SMALL PLATE CLAMP: FULL ASSEMBLY

MATERIAL TYPE REFERENCE

USED ON	793029	SCALE	1:4	DATE	08-01-18
---------	--------	-------	-----	------	----------

DRN	MSO	WEIGHT (LBS)	JOB NO	RD150003	SHEET	1 OF 1
-----	-----	--------------	--------	----------	-------	--------

DWG SIZE	C	CATALOG	A	DWG NO	800294
----------	---	---------	---	--------	--------