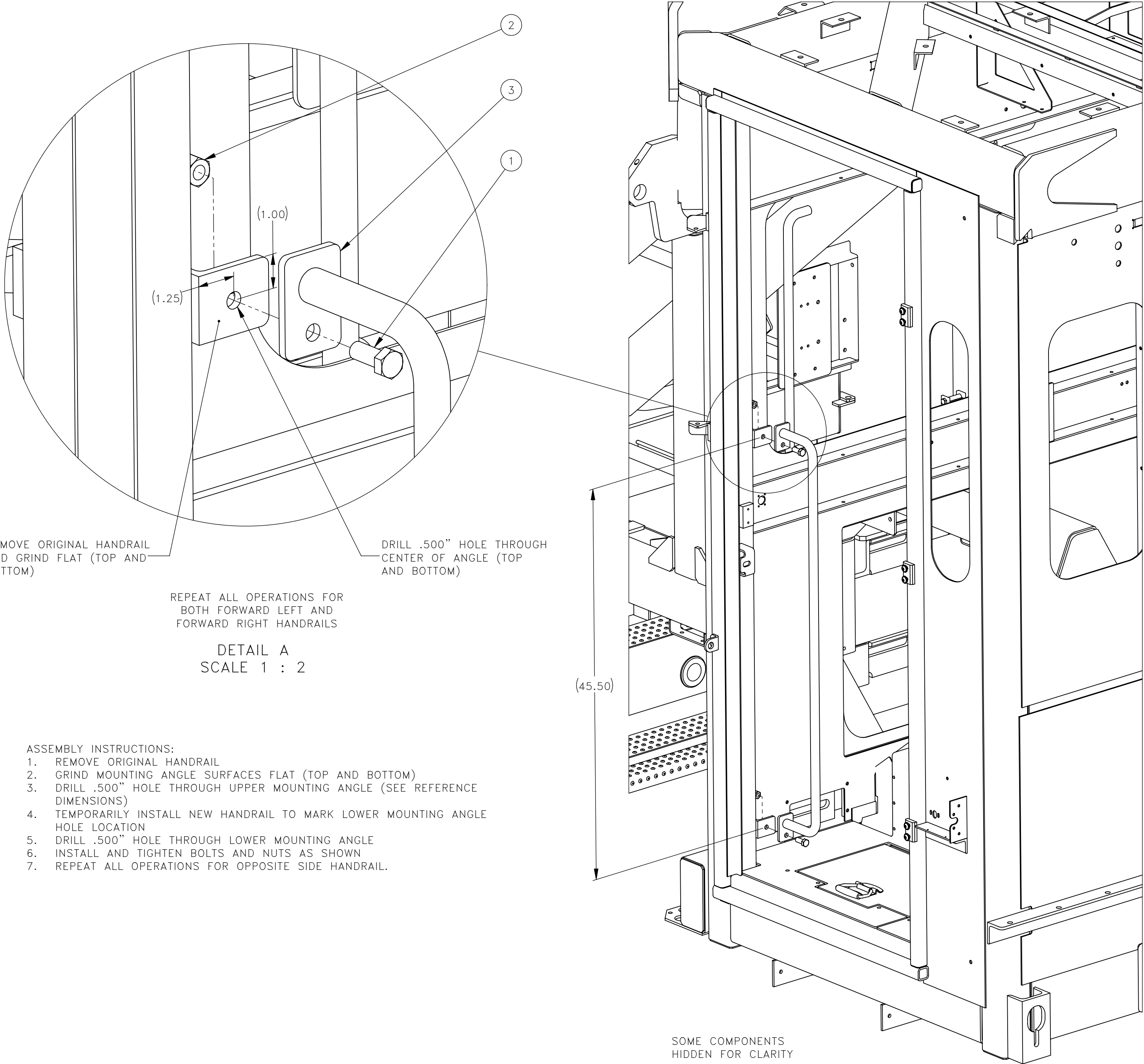


NO.	QTY	DESCRIPTION	PART NO.
1	REF	SCR, HEX: .5-13 X 1.25	400747
2	REF	NUT, HEX ES: .5-13	473272
3	REF	HANDRAIL, 45.5 LONG	781553



REMOVE ORIGINAL HANDRAIL
AND GRIND FLAT (TOP AND
BOTTOM)

DRILL .500" HOLE THROUGH
CENTER OF ANGLE (TOP
AND BOTTOM)

REPEAT ALL OPERATIONS FOR
BOTH FORWARD LEFT AND
FORWARD RIGHT HANDRAILS

DETAIL A
SCALE 1 : 2

- ASSEMBLY INSTRUCTIONS:
1. REMOVE ORIGINAL HANDRAIL
 2. GRIND MOUNTING ANGLE SURFACES FLAT (TOP AND BOTTOM)
 3. DRILL .500" HOLE THROUGH UPPER MOUNTING ANGLE (SEE REFERENCE DIMENSIONS)
 4. TEMPORARILY INSTALL NEW HANDRAIL TO MARK LOWER MOUNTING ANGLE HOLE LOCATION
 5. DRILL .500" HOLE THROUGH LOWER MOUNTING ANGLE
 6. INSTALL AND TIGHTEN BOLTS AND NUTS AS SHOWN
 7. REPEAT ALL OPERATIONS FOR OPPOSITE SIDE HANDRAIL.

SOME COMPONENTS
HIDDEN FOR CLARITY

REV	EN	DESCRIPTION		DATE	DRN
1	3579	NEW RELEASE		9-18	ERL
DIMENSION TOLERANCES UNLESS OTHERWISE SPECIFIED					
LINEAR		.XX=±.03	.XXX=±.010		
ANGULAR		X°=±1°	X.X°=±.5°		
SURFACE FINISH NOT TO EXCEED		125 ✓	SMOOTH ALL SHARP EDGES CLEAN ALL WELDS		
THIS PRINT AND ALL INFORMATION WITHIN BELONGS TO RACINE RAILROAD PRODUCTS					
<i>RACINE RAILROAD PRODUCTS</i> RACINE, WISCONSIN USA					
DESCRIPTION INSTRUCTIONS, HANDRAIL					
MATERIAL SEE BOM					
USED ON 793037			SCALE 1:8	DATE 09-28-18	
DRN ERL	CHK	APP	JOB NO RD140001	SHEET 1 OF 1	
EXP NO			DWG NO 800298		