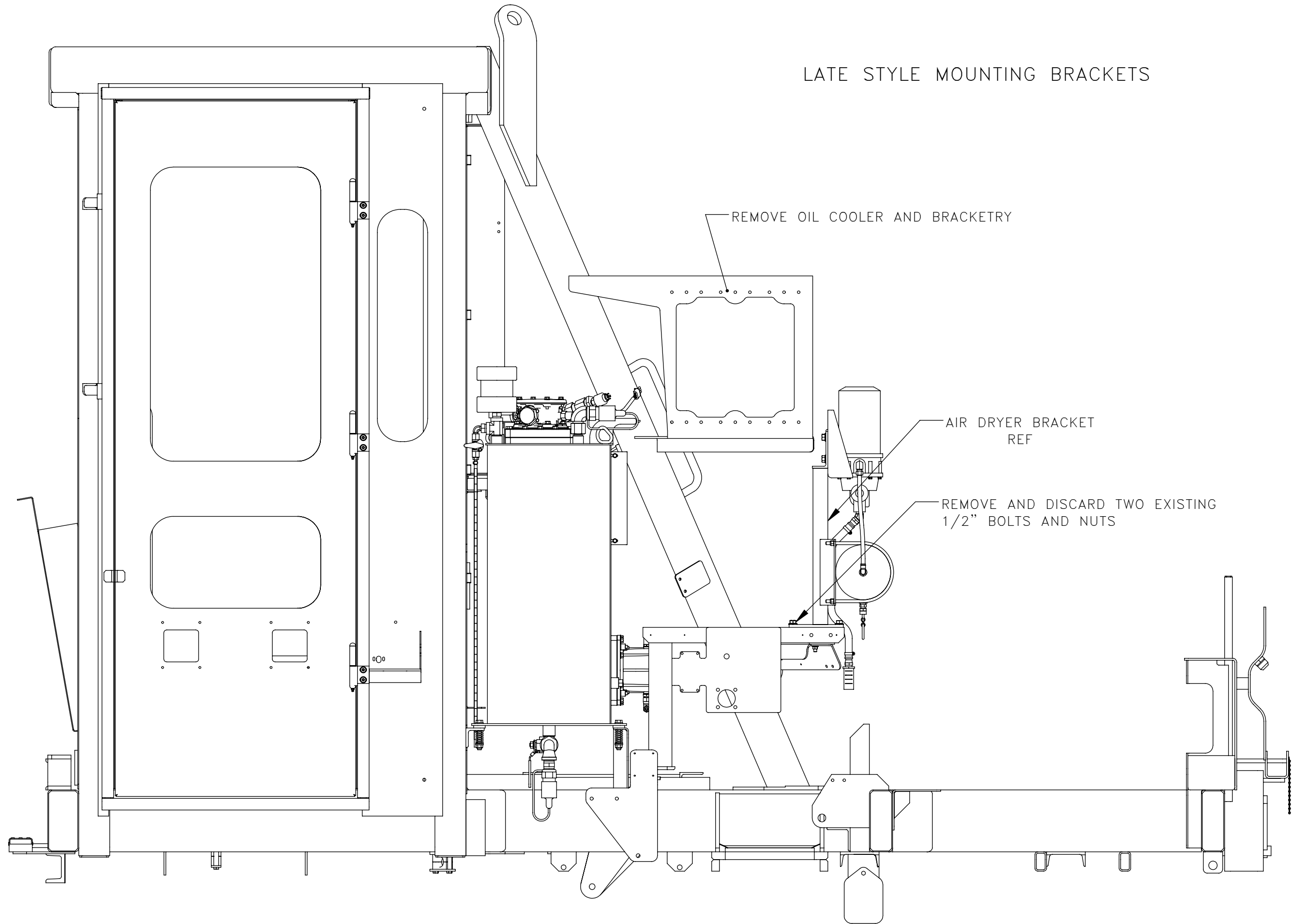


EARLY STYLE MOUNTING BRACKETS

- WARNING:
1. PRIOR TO CUTTING WITH PLASMA TORCH AND/OR WELDING, MAKE SURE ALL PRE-WELDING PROCEDURES, SUCH AS DISCONNECTING BATTERY AND ENGINE ECM ARE FOLLOWED.
 2. PROTECT CRITICAL COMPONENTS FROM CUTTING AND GRINDING DEBRIS AND WELD SPATTER.
 3. COVER AND PROTECT ALL HYDRAULIC PORTS TO PREVENT CONTAMINATION.
 4. CLOSE INLET FILTER VALVE.

- NOTES:
1. THESE INSTRUCTIONS COVER BOTH EARLIER AND LATER STYLE OIL COOLER MOUNTING BRACKETS. SELECT PICTURES THAT BEST MATCH YOUR APPLICATION.
 2. THIS KIT IS INTENDED FOR USE ONLY WITH MACHINES USING AN IN-TANK HYDRAULIC RETURN FILTER. FOR MACHINES USING AN EXTERNALLY-MOUNTED HYDRAULIC RETURN FILTER, CONTACT RACINE RAILROAD PRODUCTS.
 3. SOME COMPONENTS ARE HIDDEN FOR CLARITY.

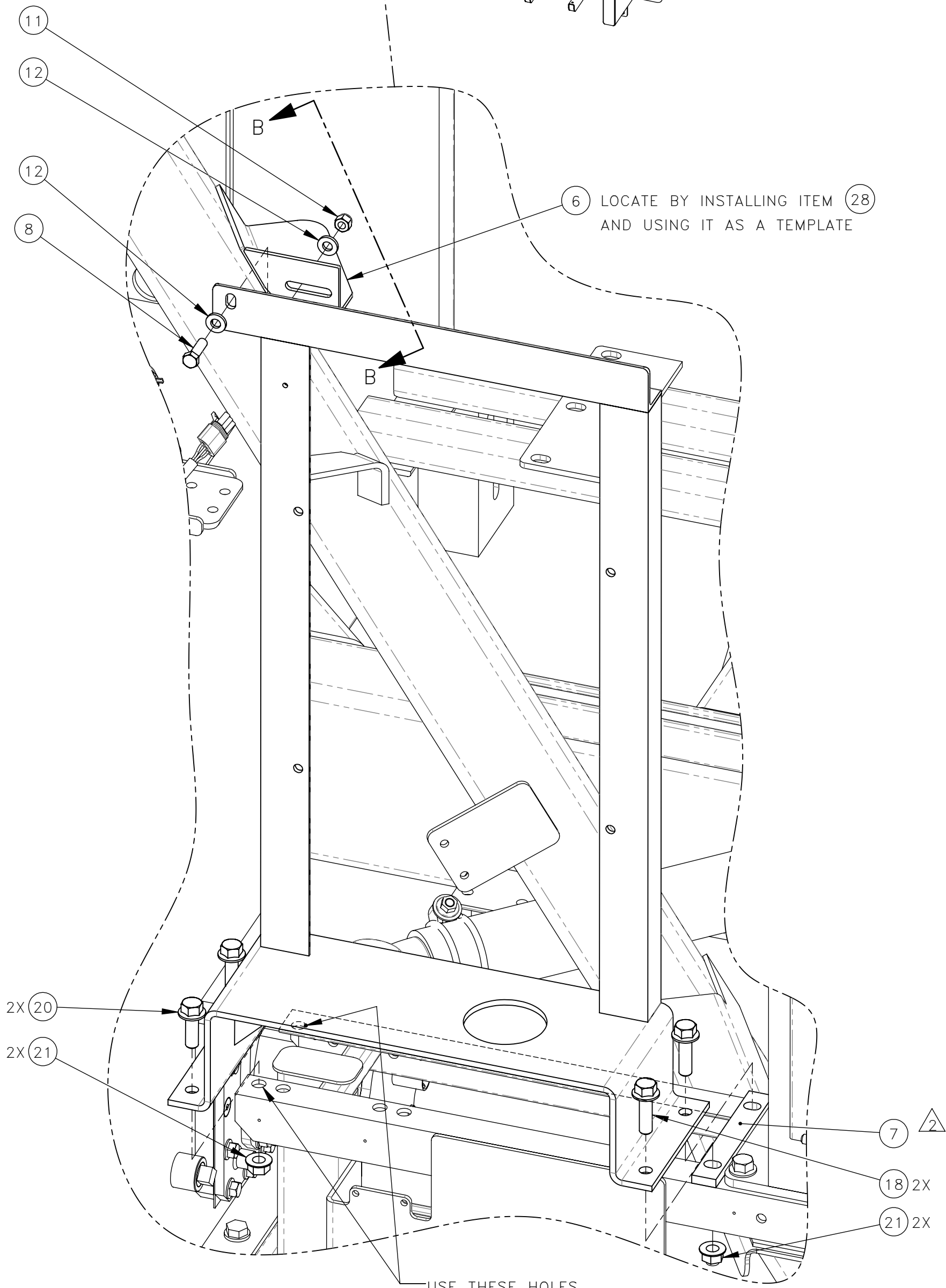
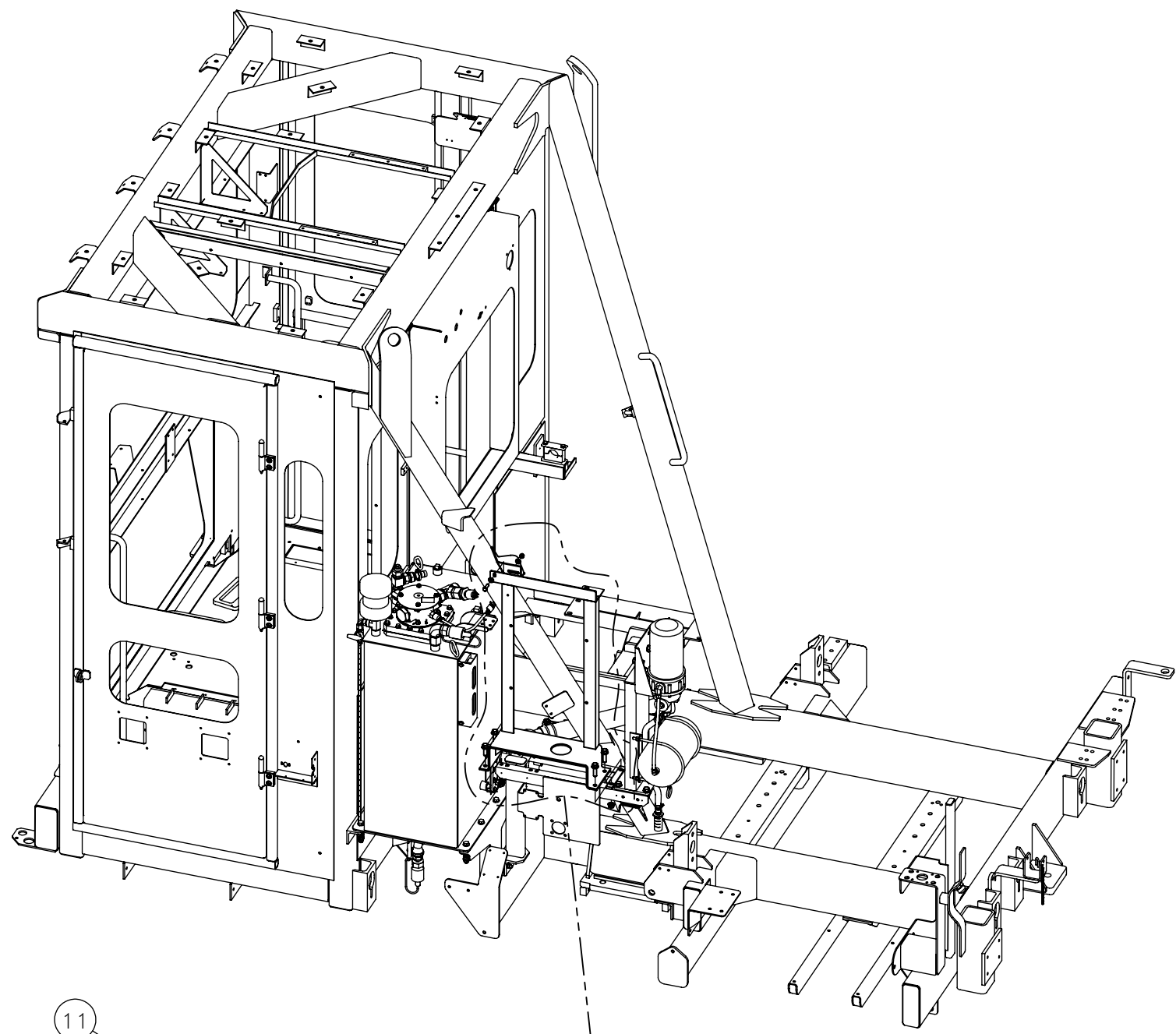
NO.	QTY	DESCRIPTION	PART NO.
1	REF	WIRE, ELEC: 10 GA RED	006614
2	REF	TERM, WIRE: 12-10 GA #10 RING INS	006807
3	REF	TERM, WIRE: 16-14 GA .25 SPADE(F) INS	006885
4	REF	LOOM, .25 SELF-WRAPPING	008930
5	REF	FLAT	319190
6	REF	PLATE	319211
7	REF	FLAT	319707
8	REF	SCR, HEX: .38-16 X 1.25	400713
9	REF	WASHER, LOCK: .25, INT/EXT TOOTH, PLTD	400917
10	REF	SCR, SOC: 10-32 X 1	406303
11	REF	NUT, HEX ES: .38-16	450577
12	REF	WASHER, FLT: .38	454778
13	REF	ELBOW, 90°: #20 JIC(M) X #20 SAE(M)	463396
14	REF	CIRCUIT BREAKER, 15A	472589
15	REF	NUT, ACORN: 10-32	473885
16	REF	BLOCK, FUSE	473886
17	REF	WASHER, FLT: .38	490959
18	REF	SCR, HEX FLG: .5-13 X 1.75	491047
19	REF	SCR, HEX FLG: .25-20 X .62	491179
20	REF	SCR, HEX FLG: .5-13 X 1.5	491484
21	REF	NUT, HEX FLG: .5-13	491487
22	REF	WASHER, FLT: #10	491646
23	REF	WIRE HARNESS, OIL COOLER KIT	718889
24	REF	WIRE, 103	718918
25	REF	WIRE, 101	718919
26	REF	WIRE, COM5	718920
27	REF	COOLER, OIL	718925
28	REF	BRACKET, OIL COOLER	781512



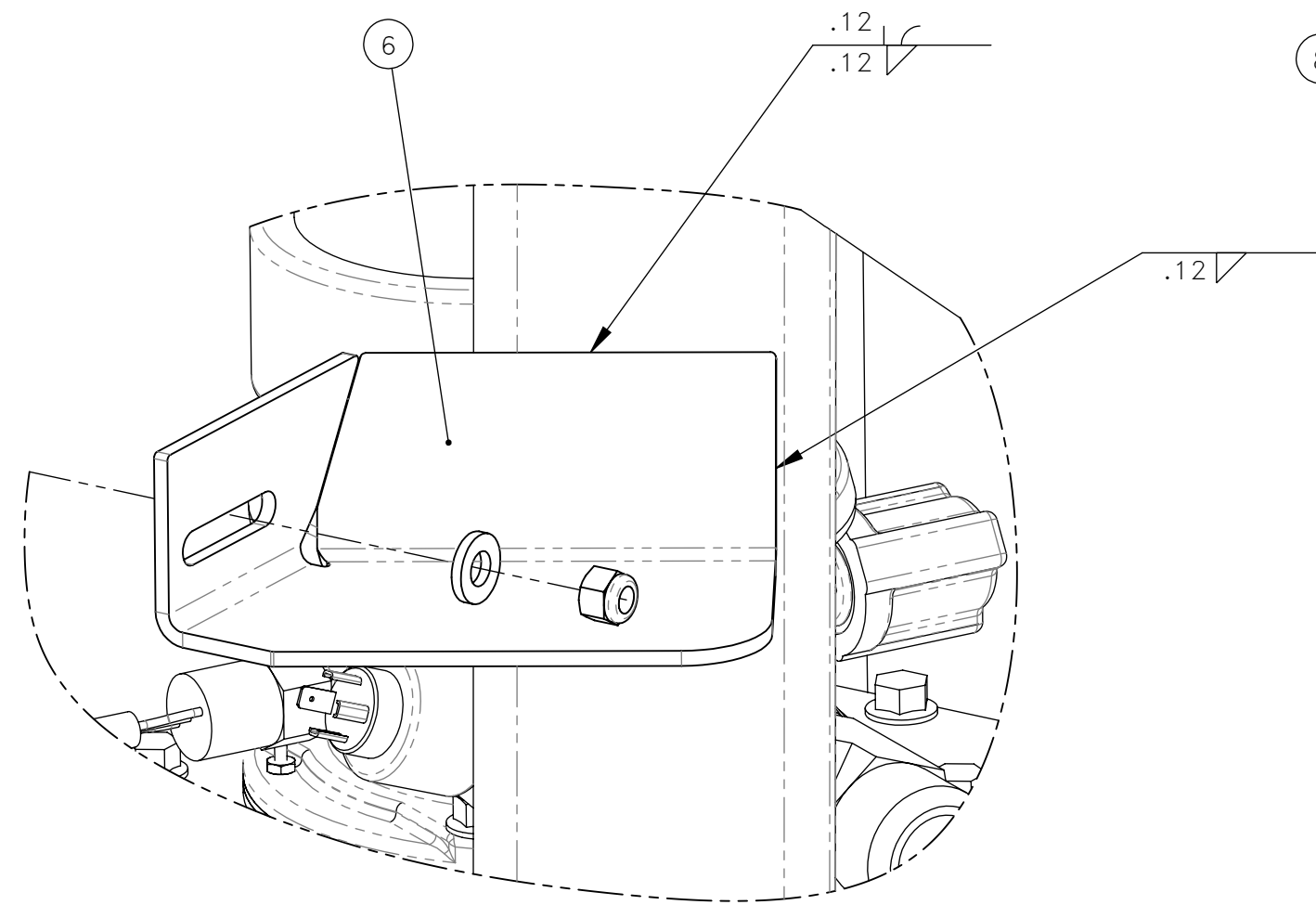
LATE STYLE MOUNTING BRACKETS

- INSTALLATION INSTRUCTIONS:
1. CLOSE INLET FILTER/VALVE ON RESERVOIR.
 2. REMOVE OIL TEMPERATURE SWITCH, RELAY, AND ALL WIRING FROM OIL COOLER AND RETAIN.
 3. DISCONNECT HOSES FROM OIL COOLER AND COVER ENDS - MAKE NOTE OF WHICH HOSE CONNECTS TO UPPER AND LOWER END OF OIL COOLER.
 4. REMOVE OIL COOLER AND ASSOCIATED BRACKETRY.
 5. REMOVE AND DISCARD TWO 1/2" BOLTS AND NUTS FROM AIR DRYER BRACKET. (LATE STYLE ONLY)

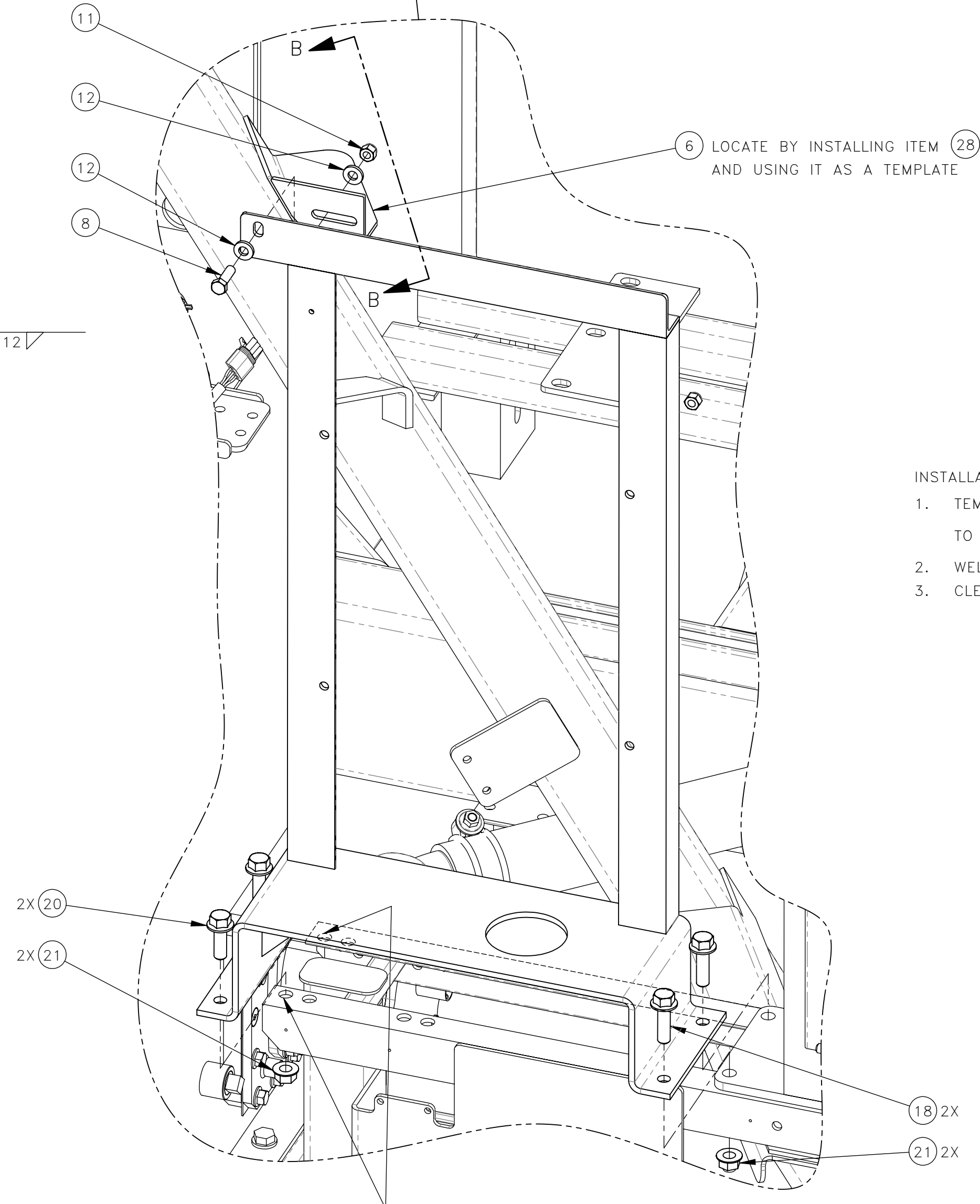
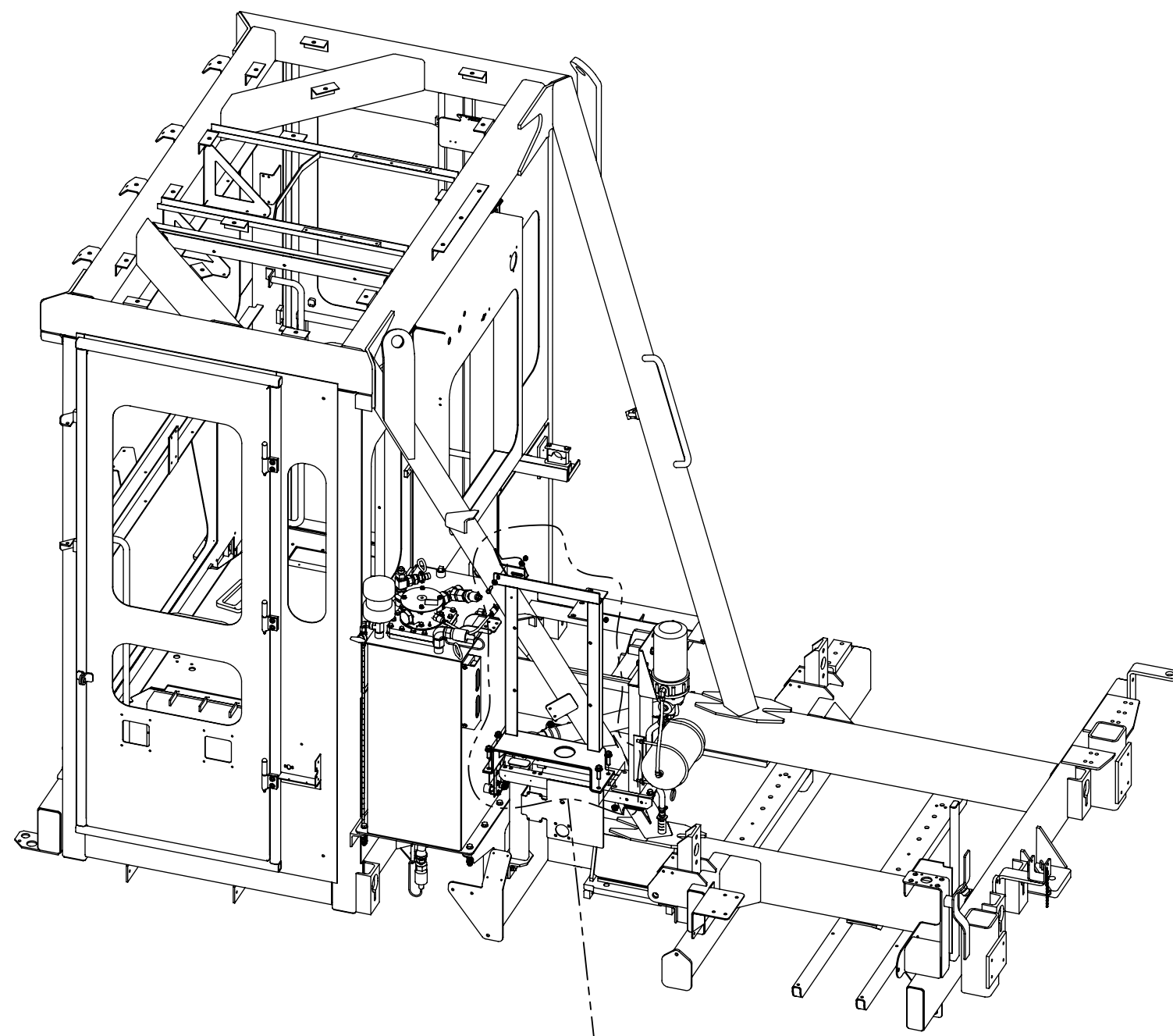
REV	EN	DESCRIPTION		DATE	DRN
1	3768	NEW RELEASE		12-18	ERL
2	3816	SEE EN FOR DETAILS		1-19	ERL
DIMENSION TOLERANCES UNLESS OTHERWISE SPECIFIED					
LINEAR		.XX=±.03	.XXX=±.010		
ANGULAR		X°=±1°	X.X°=±.5°		
SURFACE FINISH NOT TO EXCEED 125/			SMOOTH ALL SHARP EDGES CLEAN ALL WELDS		
THIS PRINT AND ALL INFORMATION WITHIN BELONGS TO RACINE RAILROAD PRODUCTS					
RACINE RAILROAD PRODUCTS RACINE, WISCONSIN USA					
DESCRIPTION					
INSTRUCTIONS, OIL COOLER KIT					
MATERIAL					
SEE BOM					
USED ON		SCALE		DATE	
793033		1:12		11-16-18	
DRN	CHK	APP	JOB NO	SHEET	
ERL			RD140001	1 OF 5	
DWG SIZE		CATALOG	DWG NO		
D		N	800302		



DETAIL A
SCALE 1 : 4
FRAME, WELD-ON PLATE INSTALLATION
EARLY STYLE MOUNTING BRACKETS



SECTION B-B
SCALE 1 : 2
MOUNTING PLATE INSTALLATION

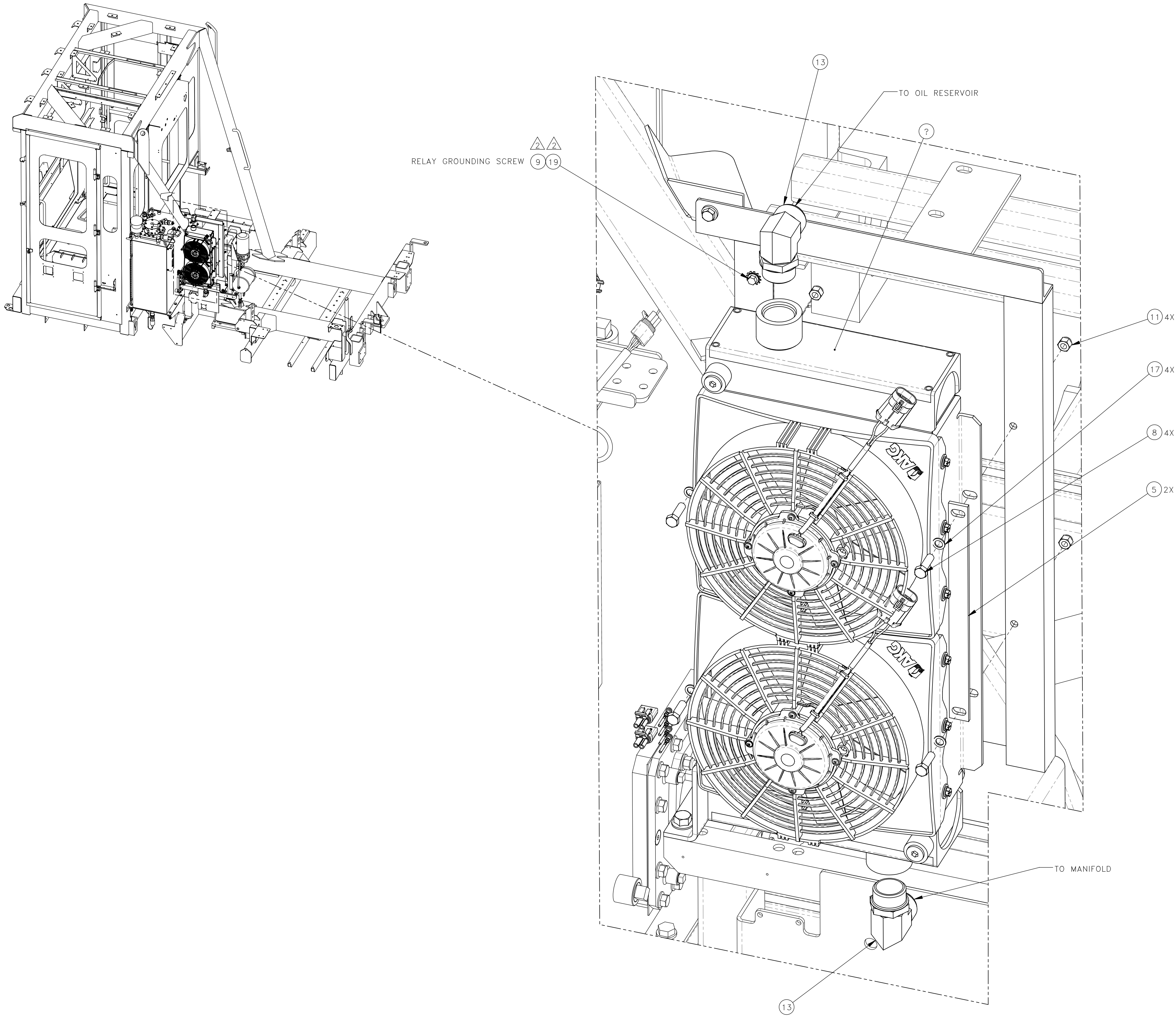


DETAIL D
SCALE 1 : 4
FRAME, WELD-ON PLATE INSTALLATION
LATE STYLE MOUNTING BRACKETS

INSTALLATION INSTRUCTIONS:

1. TEMPORARILY INSTALL OIL COOLER BRACKET (ITEM 28) AS SHOWN TO LOCATE UPPER BRACKET (ITEM 6).
2. WELD UPPER BRACKET (ITEM 6) TO MACHINE FRAME AS SHOWN.
3. CLEAN AND TOUCH UP PAINT AS REQUIRED.

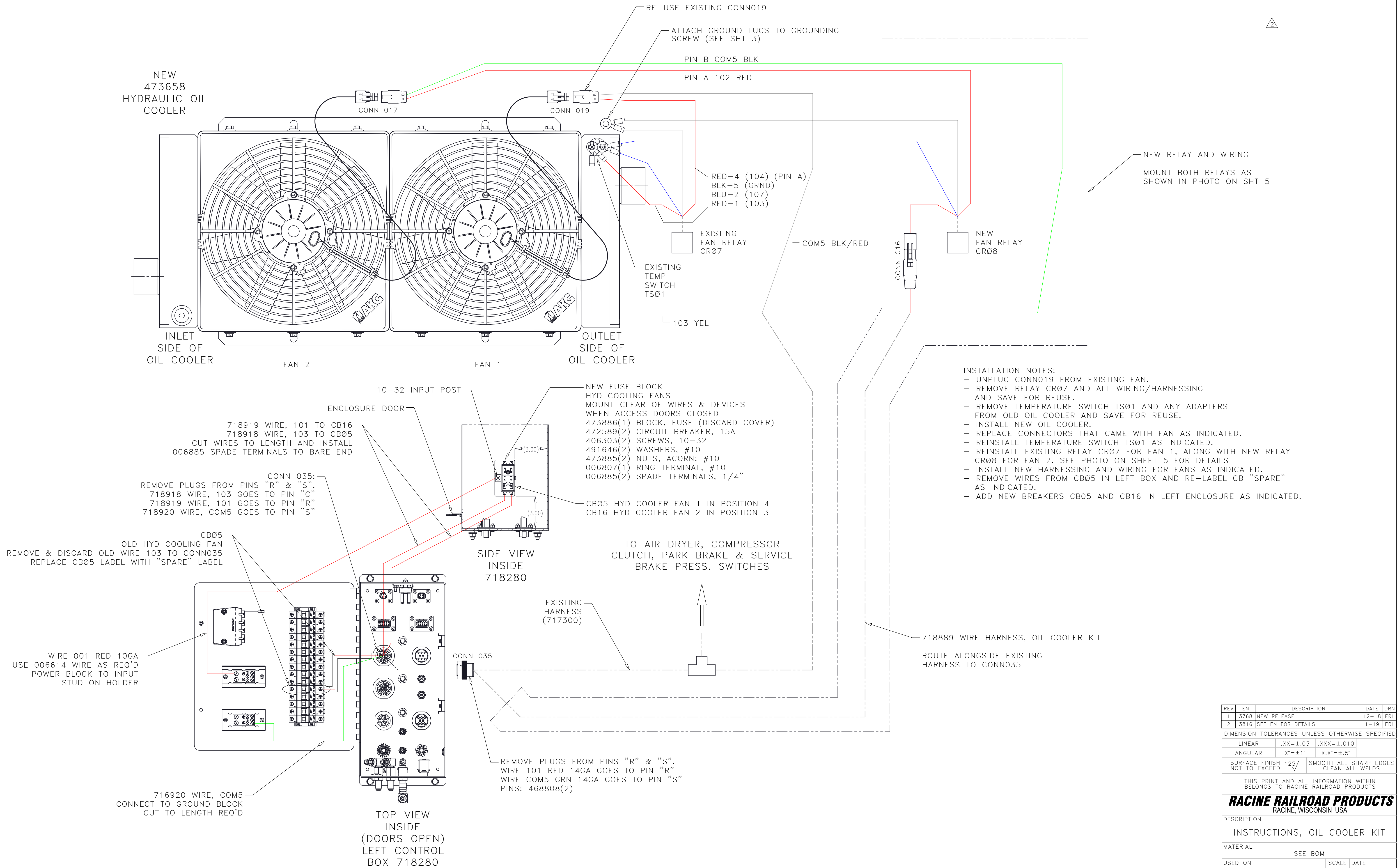
REV	EN	DESCRIPTION		DATE	DRN
1	3768	NEW RELEASE		12-18	ERL
2	3816	SEE EN FOR DETAILS		1-19	ERL
DIMENSION TOLERANCES UNLESS OTHERWISE SPECIFIED					
LINEAR		.XX=±.03	.XXX=±.010		
ANGULAR		X°=±1°	X.X°=±.5°		
SURFACE FINISH NOT TO EXCEED 125/			SMOOTH ALL SHARP EDGES CLEAN ALL WELDS		
THIS PRINT AND ALL INFORMATION WITHIN BELONGS TO RACINE RAILROAD PRODUCTS					
RACINE RAILROAD PRODUCTS RACINE, WISCONSIN USA					
DESCRIPTION					
INSTRUCTIONS, OIL COOLER KIT					
MATERIAL					
SEE BOM					
USED ON		793033		SCALE 1:16	DATE 11-16-18
DRN	CHK	APP	JOB NO RD140001	SHEET 2 OF 5	
ERL					
DWG SIZE		CATALOG	DWG NO		
D		N		800302	



- INSTALLATION INSTRUCTIONS:
1. INSTALL REMAINDER OF OIL COOLER KIT AS SHOWN
 2. PERFORM WIRING PER SHEET 4 & 5.
 3. OPEN INLET FILTER/VALVE ON RESERVOIR.
 4. CHECK HYDRAULIC FLUID LEVEL PRIOR TO STARTING MACHINE.
 5. START MACHINE AND CHECK CONNECTIONS FOR LEAKS.
 6. IF POSSIBLE, VERIFY PROPER OPERATION OF FANS WITH TEMPERATURE SWITCH.

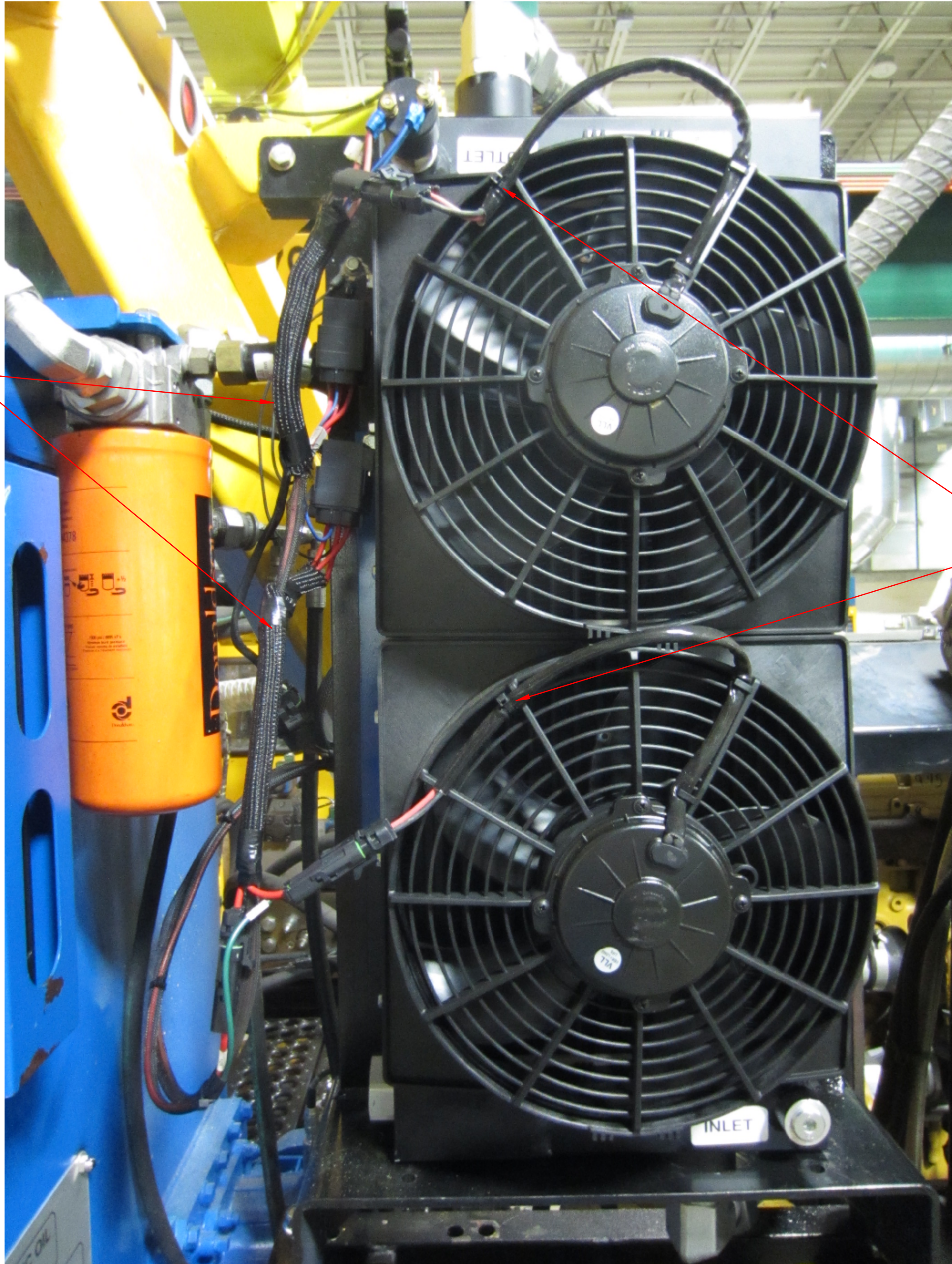
DETAIL C
SCALE 3 : 8
COOLER INSTALLATION

REV	EN	DESCRIPTION		DATE	DRN
1	3768	NEW RELEASE		12-18	ERL
2	3816	SEE EN FOR DETAILS		1-19	ERL
DIMENSION TOLERANCES UNLESS OTHERWISE SPECIFIED					
LINEAR		.XX=±.03		.XXX=±.010	
ANGULAR		X°=±1°		X.X°=±.5°	
SURFACE FINISH NOT TO EXCEED			125/	SMOOTH ALL SHARP EDGES CLEAN ALL WELDS	
THIS PRINT AND ALL INFORMATION WITHIN BELONGS TO RACINE RAILROAD PRODUCTS					
RACINE RAILROAD PRODUCTS RACINE, WISCONSIN USA					
DESCRIPTION					
INSTRUCTIONS, OIL COOLER KIT					
MATERIAL					
SEE BOM					
USED ON			SCALE	DATE	
793033			1:16	11-16-18	
DRN	CHK	APP	JOB NO	SHEET	
ERL			RD140001	3 OF 5	
DWG SIZE		CATALOG	DWG NO		
D		N	800302		



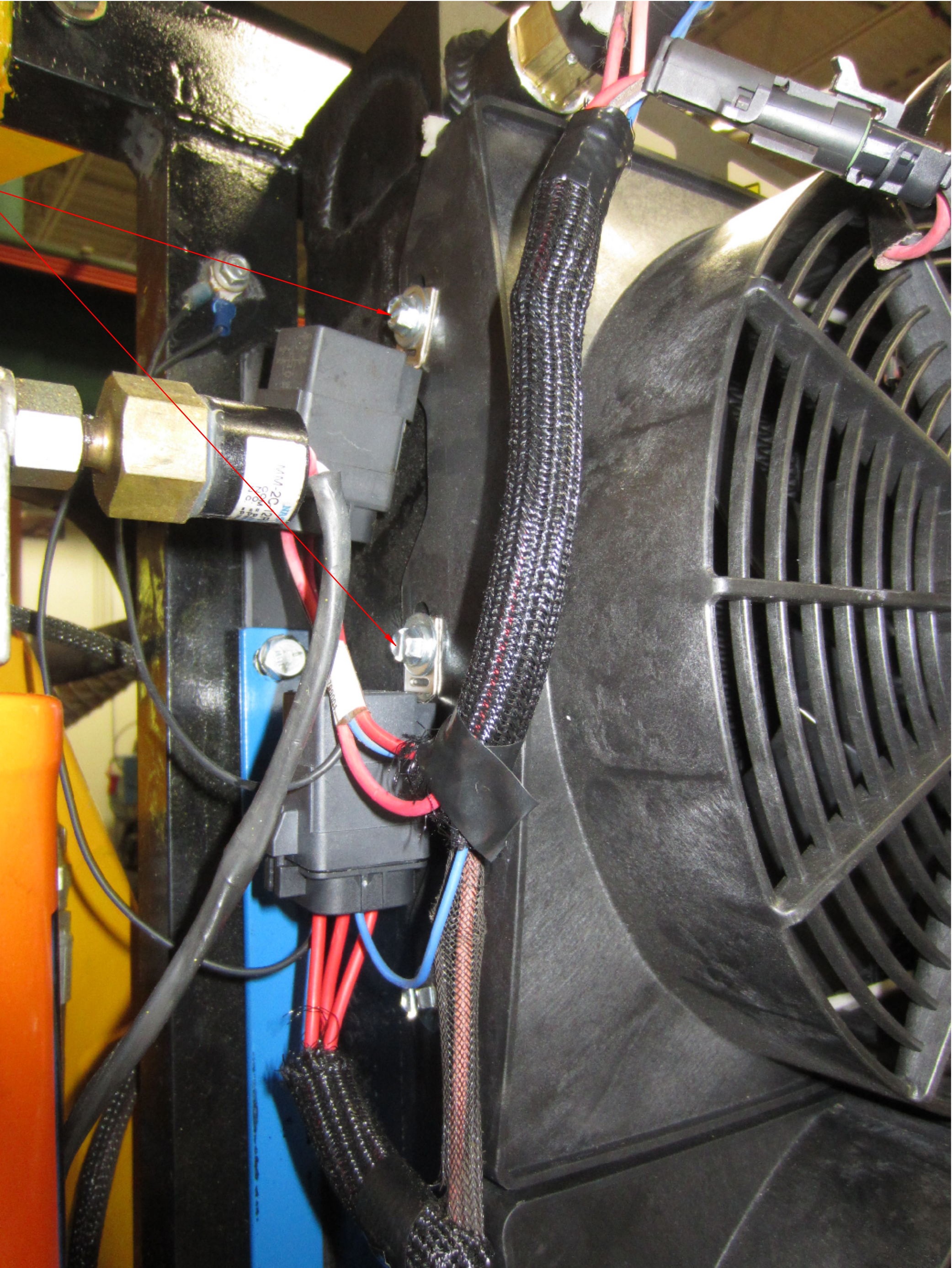
REV	EN	DESCRIPTION		DATE	DRN
1	3768	NEW RELEASE		12-18	ERL
2	3816	SEE EN FOR DETAILS		1-19	ERL
DIMENSION TOLERANCES UNLESS OTHERWISE SPECIFIED					
LINEAR		.XX=±.03		.XXX=±.010	
ANGULAR		X°=±1°		X.X°=±.5°	
SURFACE FINISH NOT TO EXCEED			125/	SMOOTH ALL SHARP EDGES CLEAN ALL WELDS	
THIS PRINT AND ALL INFORMATION WITHIN BELONGS TO RACINE RAILROAD PRODUCTS					
RACINE RAILROAD PRODUCTS RACINE, WISCONSIN USA					
DESCRIPTION					
INSTRUCTIONS, OIL COOLER KIT					
MATERIAL					
SEE BOM					
USED ON		793033		SCALE	DATE
				1:16	11-16-18
DRN	CHK	APP	JOB NO	SHEET	
ERL			RD140001	4 OF 5	
DWG SIZE		CATALOG	DWG NO		
D		N	800302		

USE WIRE LOOM AS REQUIRED



USE FAN SHROUD MOUNTING
SCREWS TO ATTACH REALAYS

ZIP TIE WIRES AT
THESE LOCATIONS



REV	EN	DESCRIPTION		DATE	DRN
1	3768	NEW RELEASE		12-18	ERL
2	3816	SEE EN FOR DETAILS		1-19	ERL
DIMENSION TOLERANCES UNLESS OTHERWISE SPECIFIED					
LINEAR		.XX=±.03	.XXX=±.010		
ANGULAR		X°=±1°	X.X°=±.5°		
SURFACE FINISH NOT TO EXCEED 125/			SMOOTH ALL SHARP EDGES CLEAN ALL WELDS		
THIS PRINT AND ALL INFORMATION WITHIN BELONGS TO RACINE RAILROAD PRODUCTS					
RACINE RAILROAD PRODUCTS RACINE, WISCONSIN USA					
DESCRIPTION					
INSTRUCTIONS, OIL COOLER KIT					
MATERIAL					
SEE BOM					
USED ON			SCALE	DATE	
793033			1:16	11-16-18	
DRN	CHK	APP	JOB NO	SHEET	
ERL			RD140001	5 OF 5	
DWG SIZE		CATALOG	DWG NO		
D		N	800302		