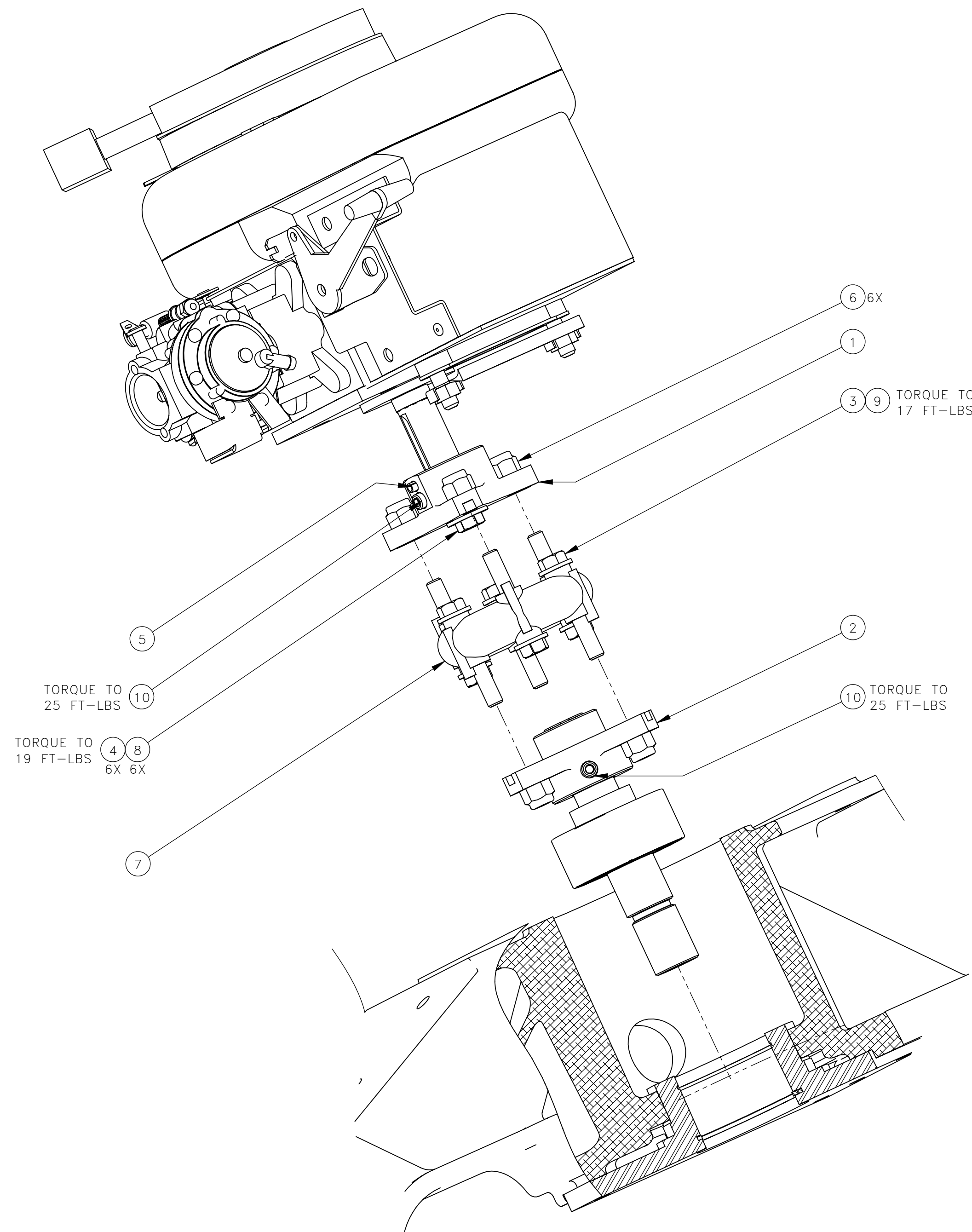


NO.	QTY	DESCRIPTION	PART NO.
1	REF	COUPLING, DRIVE: ENG	318071
2	REF	COUPLING, DRIVE: SHEAVE	318072
3	REF	SCR, HEX: .31-18 X 2	400702
4	REF	WASHER, FLT: .31	401620
5	REF	PIN, ROLL: .19 X .75	401718
6	REF	NUT, HEX ES: .31-18 HVY	404068
7	REF	DONUT, COUPLING	472964
8	REF	SCR, HEX: .31-24 X .75	490432
9	REF	WASHER, FLT: .31	491259
10	REF	SCR, SOC SET: .31-24 X .5	491677



1. INSTALL ITEMS 1, 4, 5, 8, AND 10 TO ENGINE SHAFT.
2. "IMPORTANT" DO NOT REMOVE METAL SHIPPING BAND FROM AROUND DONUT.
3. INSTALL DONUT (ITEM 7) ONTO ENGINE SHAFT COUPLING.
4. INSTALL DRIVE SHEAVE SHAFT ONTO DRIVE SHEAVE. SECURE WITH ITEM 10.
5. INSTALL ITEMS 2, 10, AND DRIVE SHEAVE ON TO DONUT.
6. METAL BAND ON COUPLING MAY NOW BE REMOVED.
7. LOWER COMPLETE ENGINE ASSEMBLY IN FRAME.

REV	EN	DESCRIPTION	DATE	DRN
1	3703	NEW RELEASE	11-18	MAE

DIMENSION TOLERANCES UNLESS OTHERWISE SPECIFIED			
LINEAR	.XX=±.03	.XXX=±.010	
ANGULAR	X°=±1°	X.X°=±.5°	
SURFACE FINISH NOT TO EXCEED	125 ✓	SMOOTH ALL SHARP EDGES CLEAN ALL WELDS	

THIS PRINT AND ALL INFORMATION WITHIN BELONGS TO RACINE RAILROAD PRODUCTS

**RACINE RAILROAD PRODUCTS**

RACINE, WISCONSIN USA

DESCRIPTION  
INSTRUCTIONS, COUPLING

MATERIAL  
SEE BOM

USED ON	793042	SCALE	1:1.75	DATE	11-08-18
---------	--------	-------	--------	------	----------

DRN	ME	CHK	APP	JOB NO	RD040168	SHEET	1 OF 1
-----	----	-----	-----	--------	----------	-------	--------

EXP NO		DWG NO	800304
--------	--	--------	--------