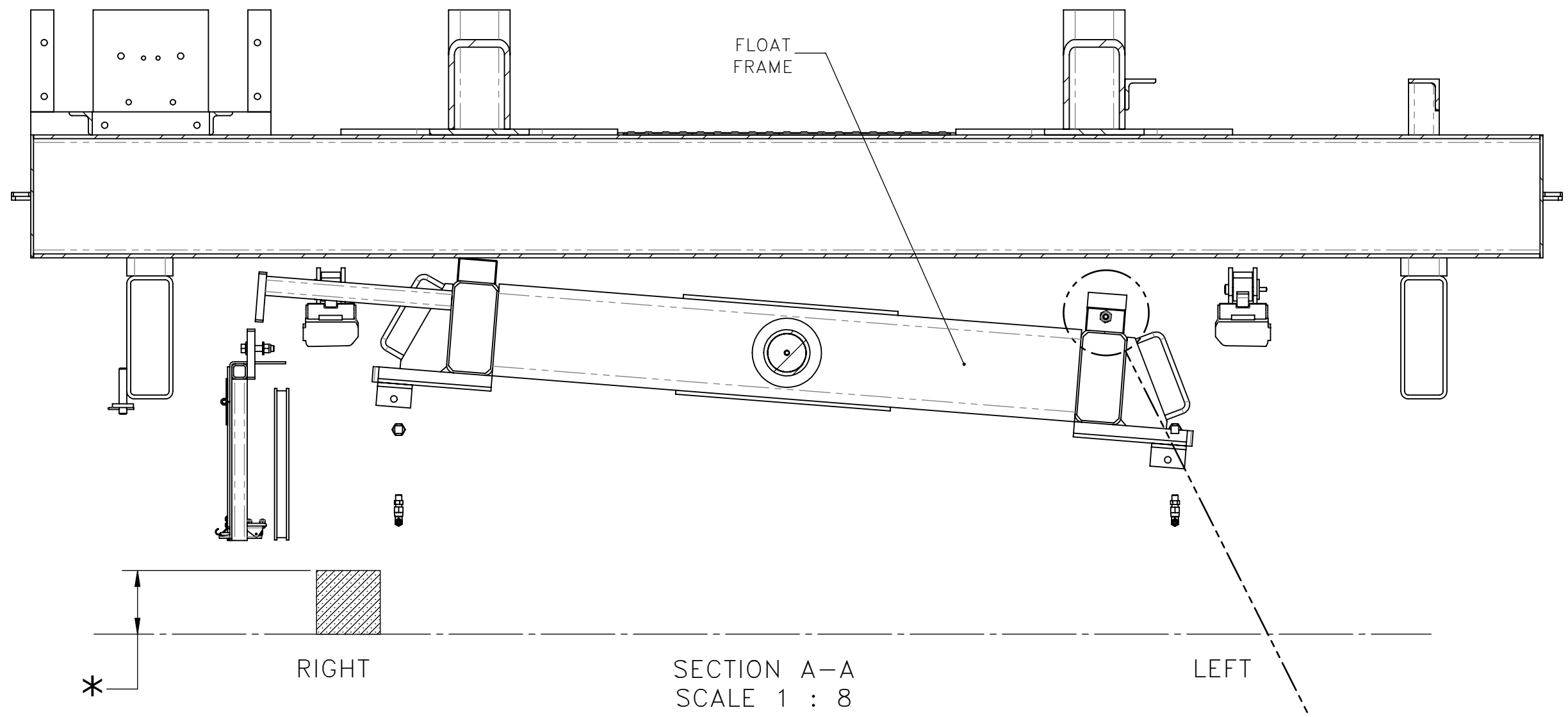


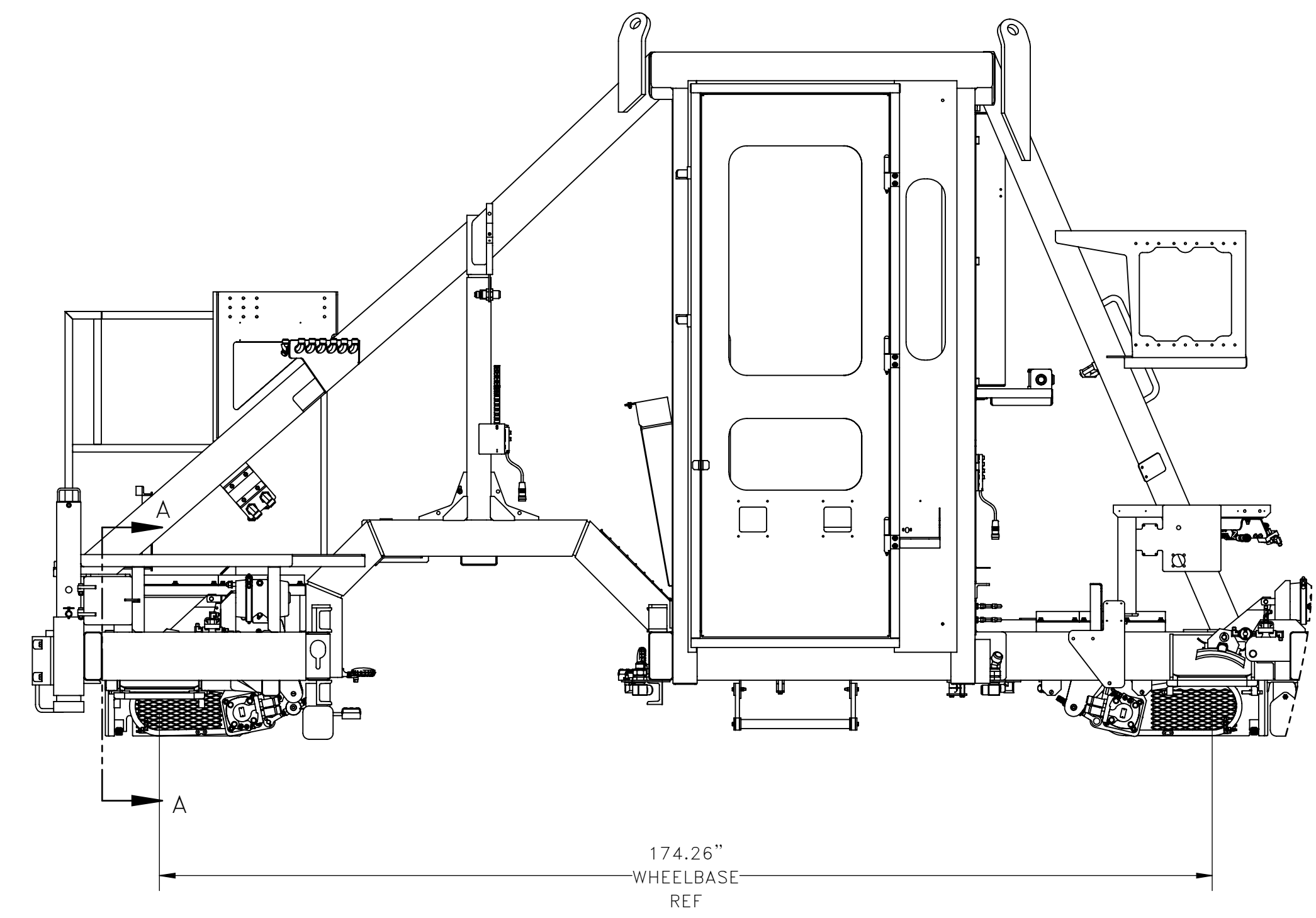
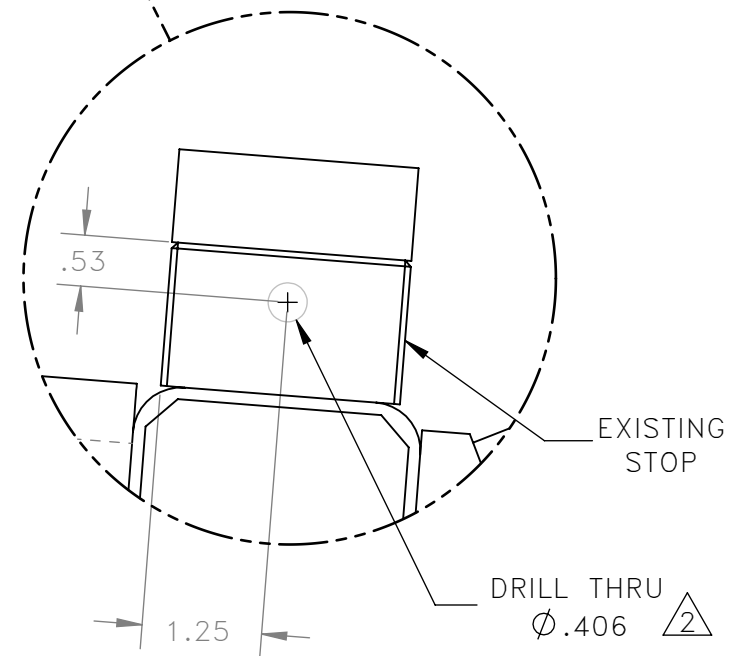
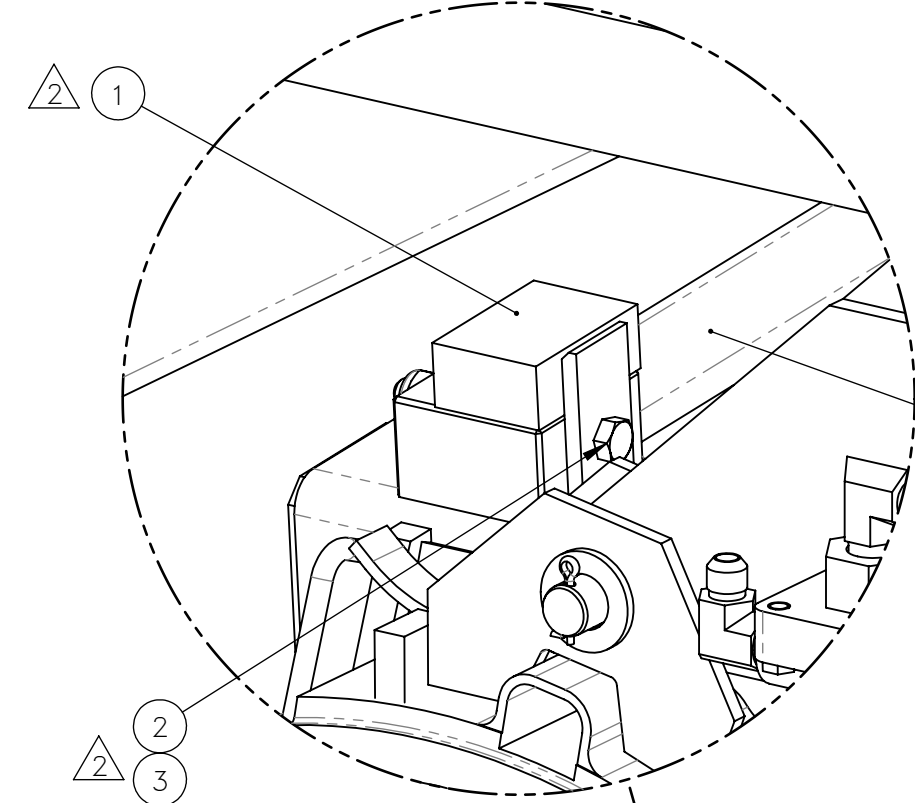
| NO. | QTY | DESCRIPTION | PART NO. |
|-----|-----|-------------------------|----------|
| 1 | REF | STOP, FLOAT FRAME | 782255 |
| 2 | REF | SCR, HEX: .38-16 X 3.5 | 400715 |
| 3 | REF | NUT, HEX ES: .38-16 HVY | 404401 |

DWG NO 800306



KIT, INSTALLATION:

- * 1. BEGIN BY JACKING/ELEVATING AND ADEQUATELY SUPPORTING RIGHT SIDE OF FLOAT FRAME AS FAR AS POSSIBLE. THIS IS TO ALLOW MAXIMUM ACCESS FOR INSTALLATION OF KIT.
- 2. LOCATE & STOP, FLOAT FRAME PER DETAIL B, & DETAIL D

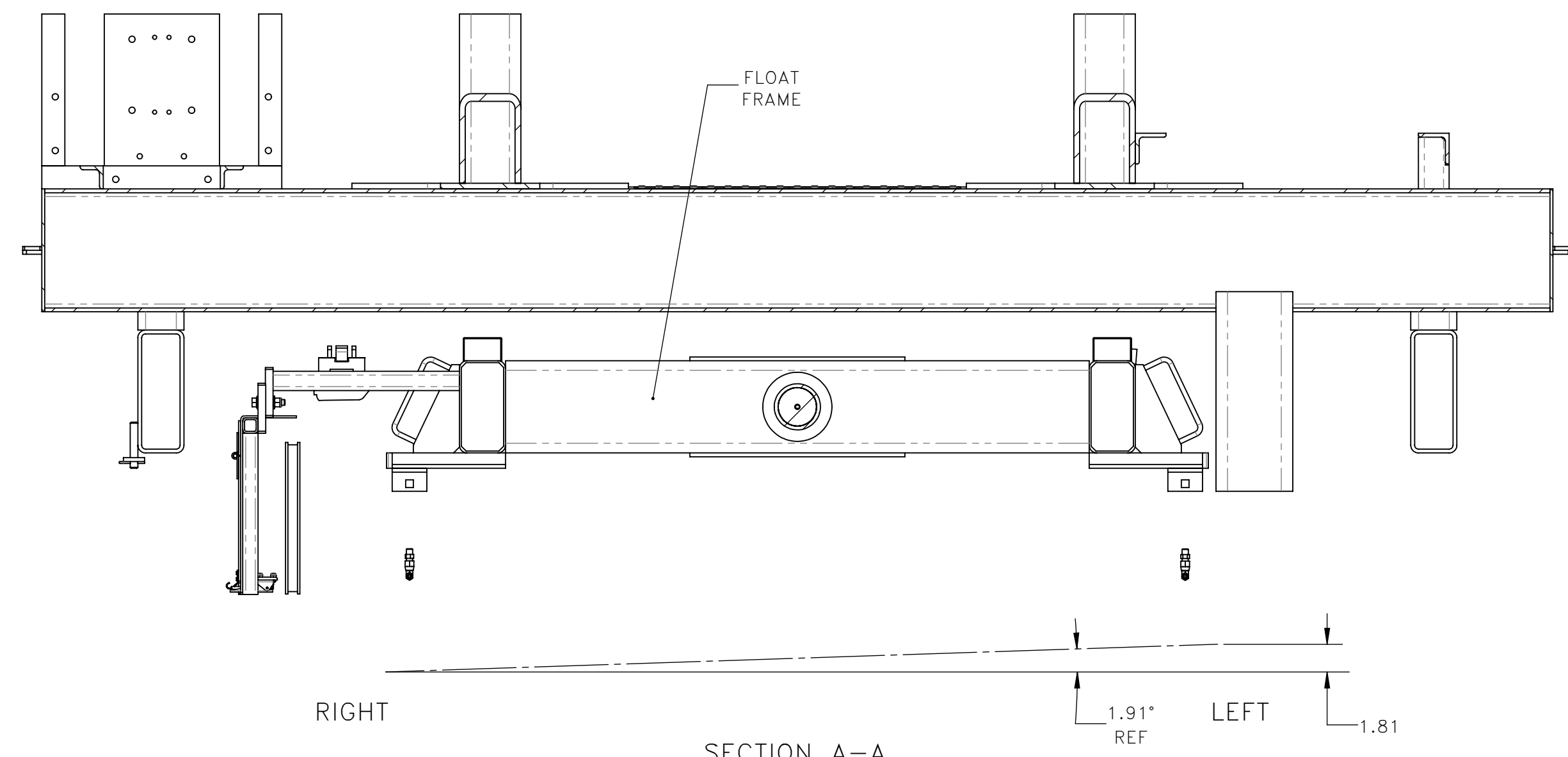
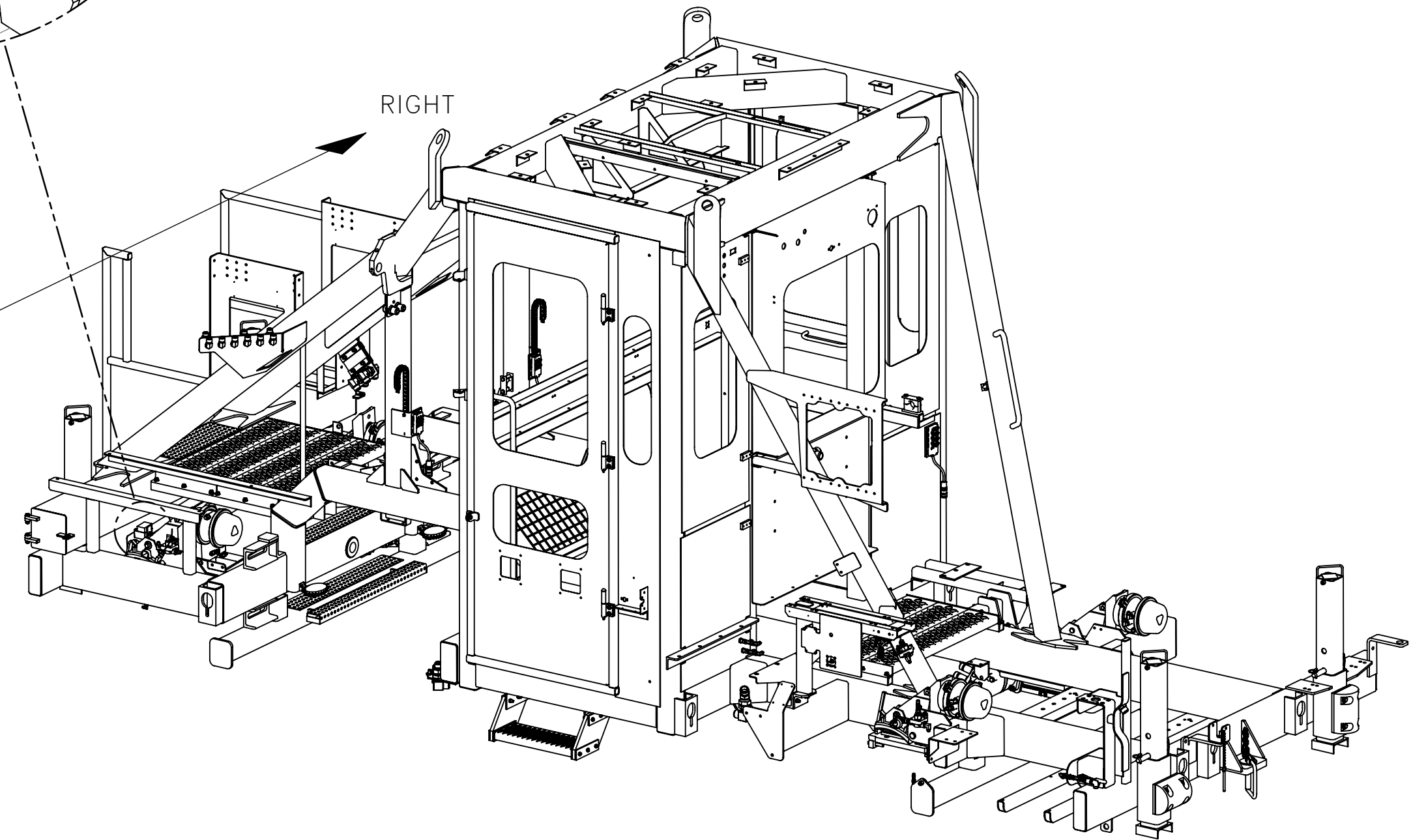


REFERENCE AREMA MANUAL FOR RAILWAY ENGINEERING:

2.3.4 WHEELS, AXLES AND BEARINGS: FRAME AND SUSPENSION (2000)

D. FRAME MUST BE SUFFICIENTLY FLEXIBLE, OR AT LEAST ONE AXLE MUST BE FREE TO FLOAT, SO THAT ANY WHEEL CAN DROP BELOW THE PLANE ESTABLISHED BY THE OTHER THREE WHEELS. THE AMOUNT OF DROP IN INCHES SHALL BE EQUAL TO, OR MORE THAN THE WHEELBASE OF THE MACHINE IN FEET DIVIDED BY EIGHT.

WHEELBASE = 174.30"(14'-6.3")
 $14.525"/8 = 1.82"$ DROP



SECTION A-A
 SCALE 1:8
 MAXIMUM AXLE DROP WITH KIT INSTALLED

| REV | EN | DESCRIPTION | DATE | DRN |
|-----|------|--------------------|-------|-----|
| 1 | 3781 | NEW RELEASE | 12-18 | MAI |
| 2 | 6202 | SEE EN FOR DETAILS | 4-22 | PR |

DIMENSION TOLERANCES UNLESS OTHERWISE SPECIFIED

| | | |
|---------|----------|-------------|
| LINEAR | .XX=±.03 | .XXX=±.010 |
| ANGULAR | X' = ±1' | X.X' = ±.5' |

SURFACE FINISH 125/ NOT TO EXCEED SMOOTH ALL SHARP EDGES CLEAN ALL WELDS

THIS PRINT AND ALL INFORMATION WITHIN BELONGS TO RACINE RAILROAD PRODUCTS
RACINE RAILROAD PRODUCTS
 RACINE, WISCONSIN USA

| | | | |
|-------------|---------|--------------------------------|----------|
| DESCRIPTION | | INSTRUCTIONS, FLOAT FRAME STOP | |
| MATERIAL | | SEE BOM | |
| USED ON | 793043 | SCALE | DATE |
| | | 1:16 | 12-12-18 |
| DRN | MI | APP | SHEET |
| | | RD140001 | 1 OF 1 |
| DWG SIZE | CATALOG | DWG NO | |
| D | N | | 800306 |