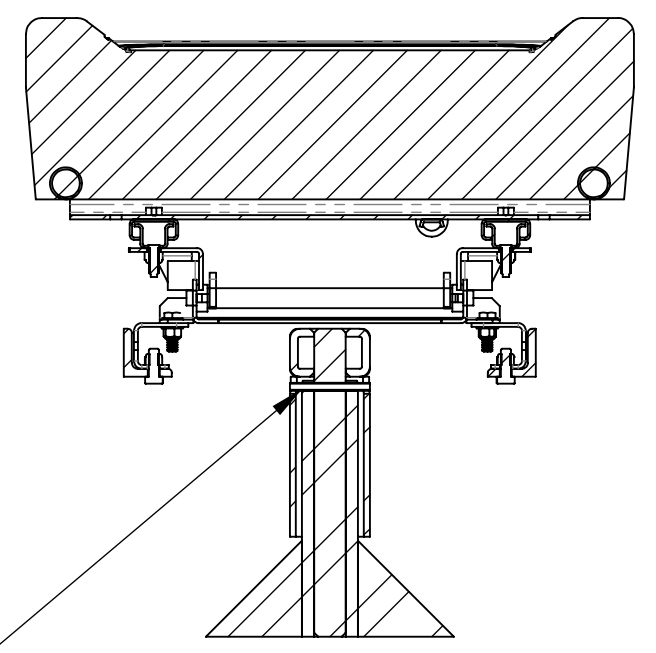
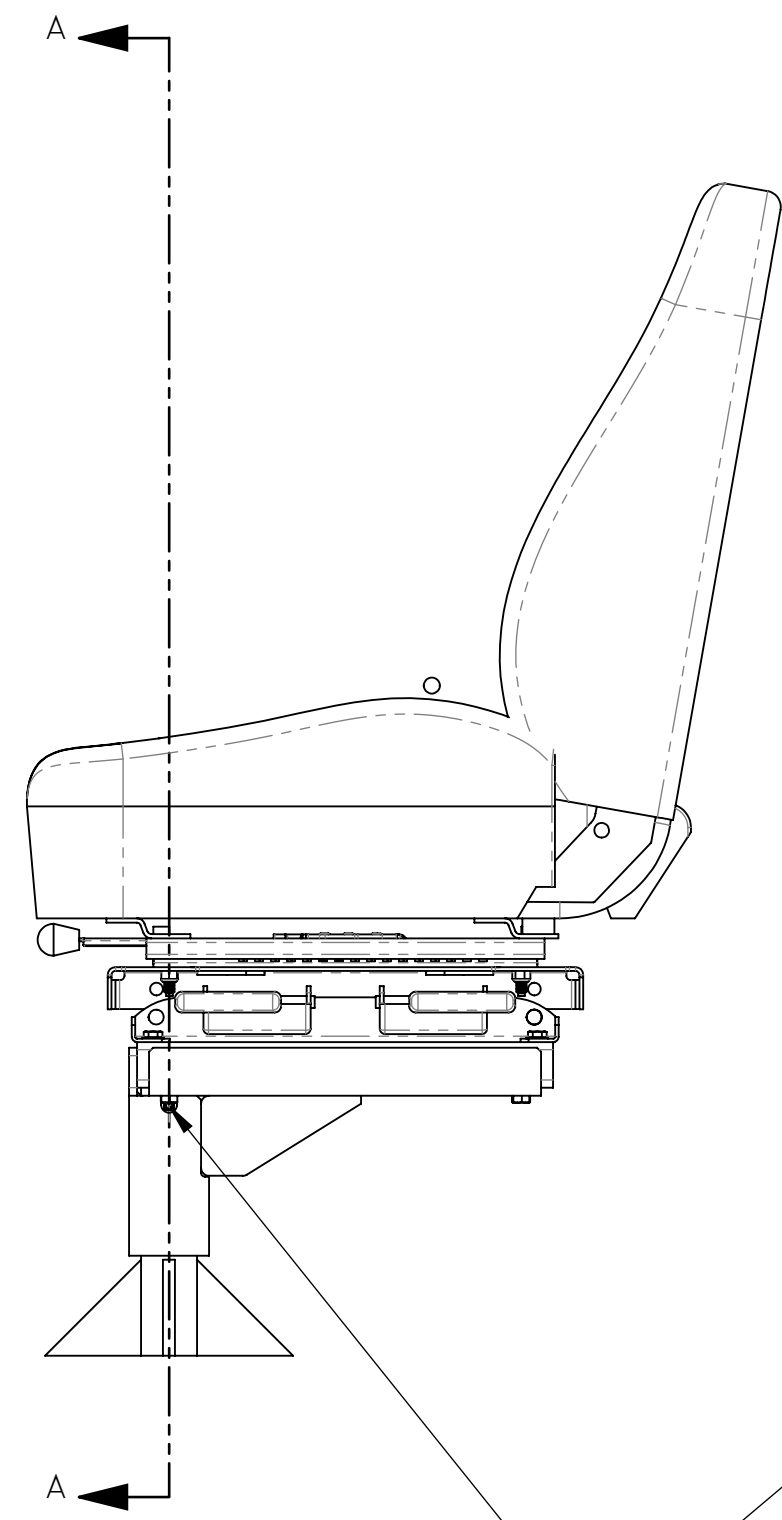
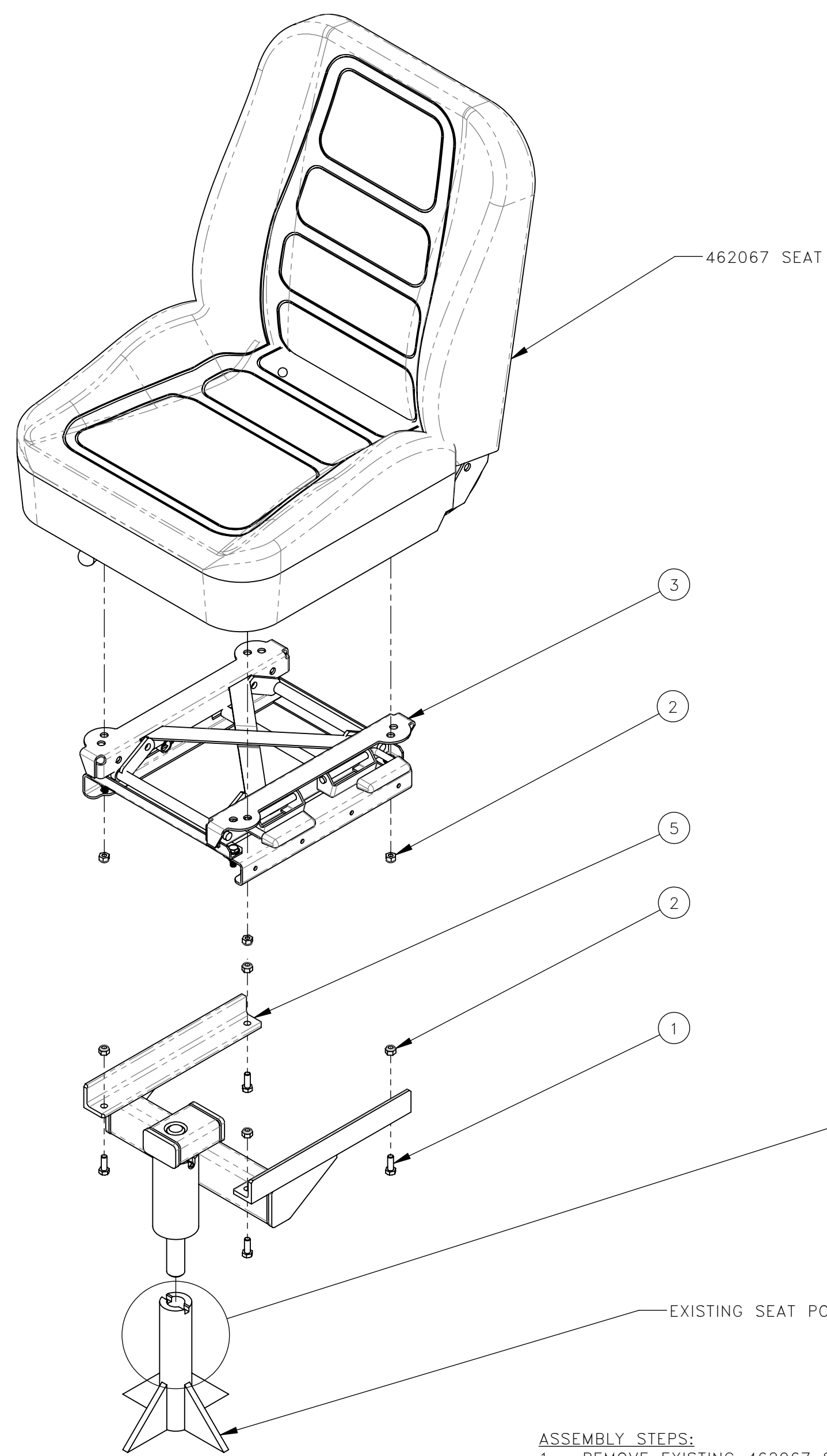
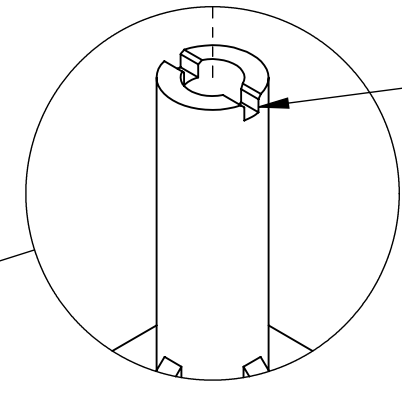


NO.	QTY	DESCRIPTION	PART NO.
1	REF	SCR, HEX: .31-18 X .88	400711
2	REF	NUT, HEX ES: .31-18	450578
3	REF	RISER, SEAT	475067
4	REF	NUT, HEX FLG: .31-18	491331
5	REF	MOUNT, SEAT	781905



SECTION A-A

NOTE: WHEN INSTALLING THE SEAT, INSERT SEAT MOUNT SHAFT INTO SEAT GUIDE POST UNTIL ROLL PIN RESTS IN SEAT GUIDE POST NOTCH.



DETAIL B
SCALE 1 : 3

- ASSEMBLY STEPS:**
1. REMOVE EXISTING 462067 SEAT AND (4) 491331 .31-18 HEX FLANGE NUTS FROM EXISTING SEAT MOUNT.
 2. DISCARD EXISTING SEAT MOUNT.
 3. ASSEMBLE 462067 SEAT TO 475067 SEAT RISER WITH EXISTING OR NEW (4) .31-18 HEX FLANGE NUTS.
 4. ASSEMBLE 781905 SEAT MOUNT TO SEAT RISER WITH:
 - 5. (4) 400711 .31-18 HEX HEAD CAP SCREWS
 - 6. (4) 450578 .31-18 HEX ELASTIC STOP NUTS.
 7. PLACE THIS SEAT ASSEMBLY INTO THE FRAME MOUNTED SEAT POST GUIDE.

REV	EN	DESCRIPTION	DATE	DRN
1	4917	NEW RELEASE	3-20	KPB

DIMENSION TOLERANCES UNLESS OTHERWISE SPECIFIED

LINEAR	.XX=±.03	.XXX=±.010
ANGULAR	X°=±1°	X.X°=±.5°

SURFACE FINISH 125 ✓ / SMOOTH ALL SHARP EDGES
NOT TO EXCEED / CLEAN ALL WELDS

THIS PRINT AND ALL INFORMATION WITHIN
BELONGS TO RACINE RAILROAD PRODUCTS

RACINE RAILROAD PRODUCTS
RACINE, WISCONSIN USA

DESCRIPTION
INSTRUCTIONS, SEAT RISER

MATERIAL REFERENCE DRAWING

USED ON	SCALE	DATE
793075	1:6	03-31-20

DRN	CHK	APP	JOB NO	SHEET
KB			RD150002	1 OF 1

DWG SIZE	CATALOG	DWG NO
C	N	800330