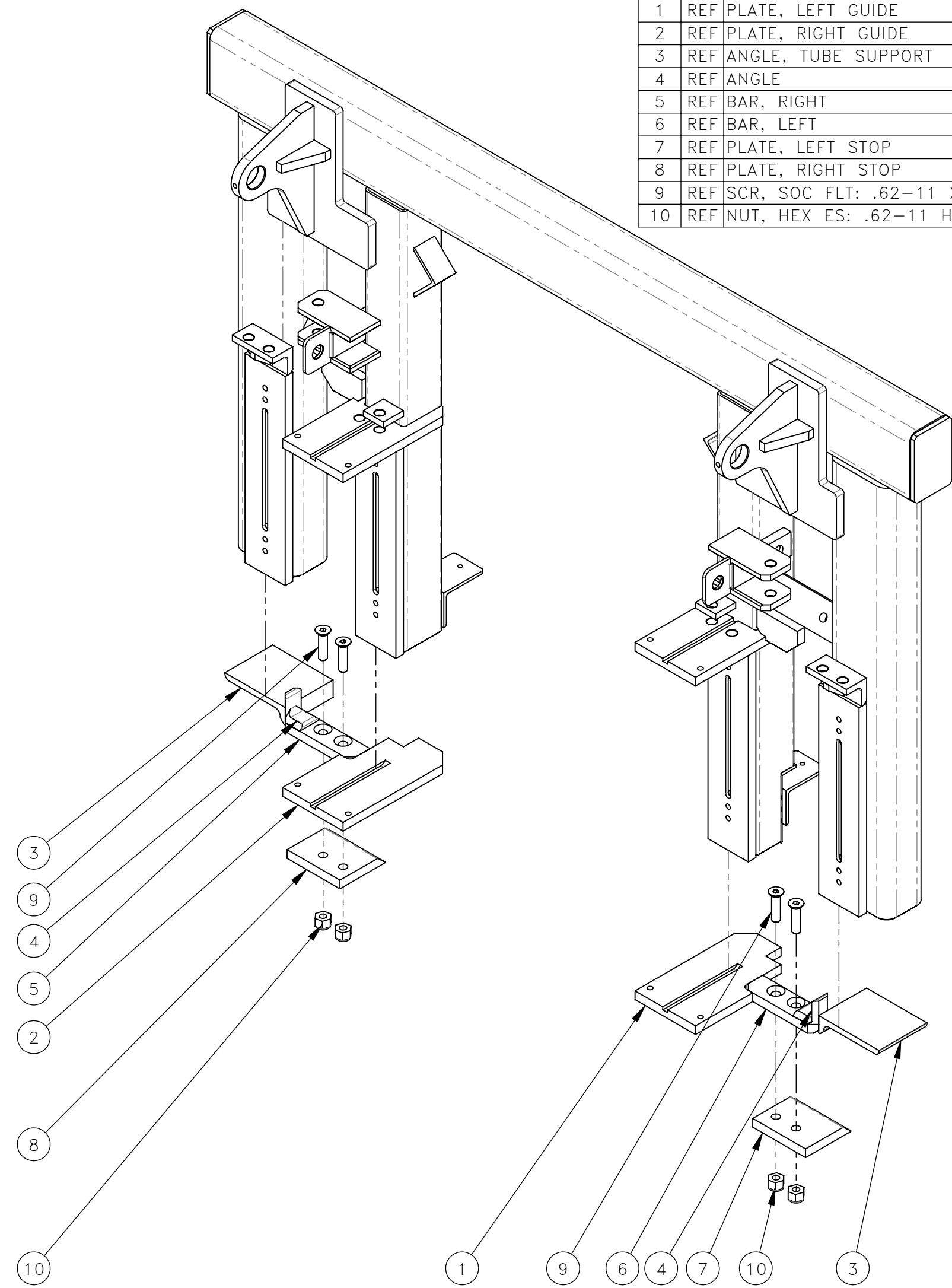


EXISTING FRAME PARTS TO REMOVE



ADDITION OF NEW PARTS
SEE SHEET 2 FOR DETAILS

NO.	QTY	DESCRIPTION	PART NO.
1	REF	PLATE, LEFT GUIDE	321581
2	REF	PLATE, RIGHT GUIDE	321584
3	REF	ANGLE, TUBE SUPPORT	321579
4	REF	ANGLE	321580
5	REF	BAR, RIGHT	321569
6	REF	BAR, LEFT	321578
7	REF	PLATE, LEFT STOP	321566
8	REF	PLATE, RIGHT STOP	321568
9	REF	SCR, SOC FLT: .62-11 X 2.5	475313
10	REF	NUT, HEX ES: .62-11 HVY	405325

RETROFIT PROCEDURE

1. REMOVE PARTS FROM EXISTING FRAME
2. ADD NEW SERVICE KIT PARTS

REV	EN	DESCRIPTION	DATE	DRN
1	5102	NEW RELEASE	7-20	KPB

DIMENSION TOLERANCES UNLESS OTHERWISE SPECIFIED

LINEAR	.XX=±.03	.XXX=±.010
ANGULAR	X°=±1°	X.X°=±.5°

SURFACE FINISH 125 ✓ / NOT TO EXCEED / SMOOTH ALL SHARP EDGES / CLEAN ALL WELDS

THIS PRINT AND ALL INFORMATION WITHIN BELONGS TO RACINE RAILROAD PRODUCTS

RACINE RAILROAD PRODUCTS
RACINE, WISCONSIN USA

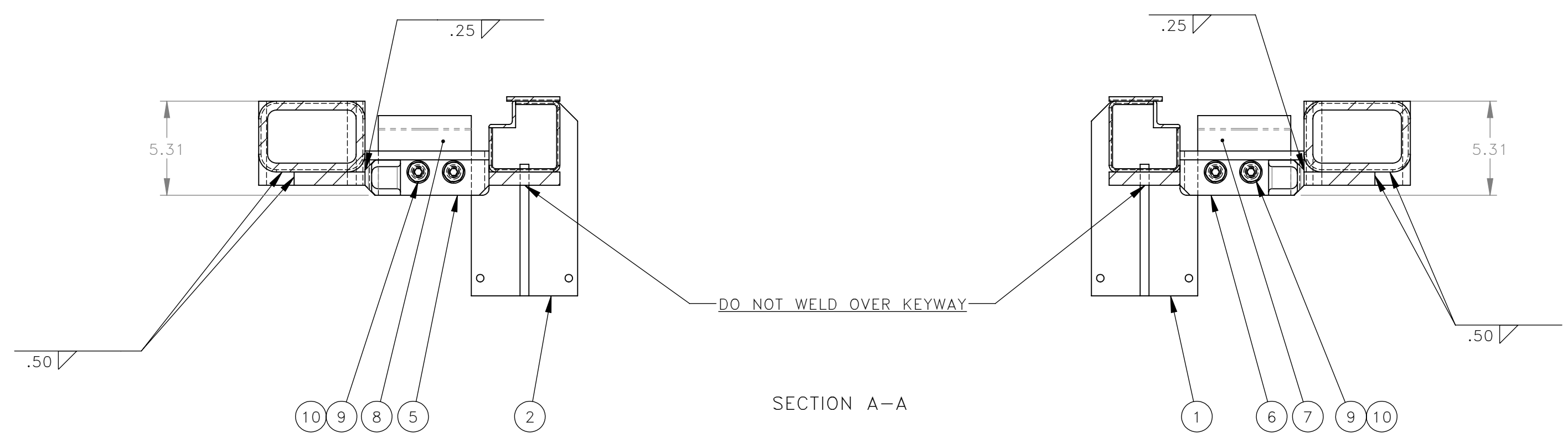
DESCRIPTION
INSTRUCTIONS, SETTER ARM DOWN STOP

MATERIAL REFERENCE

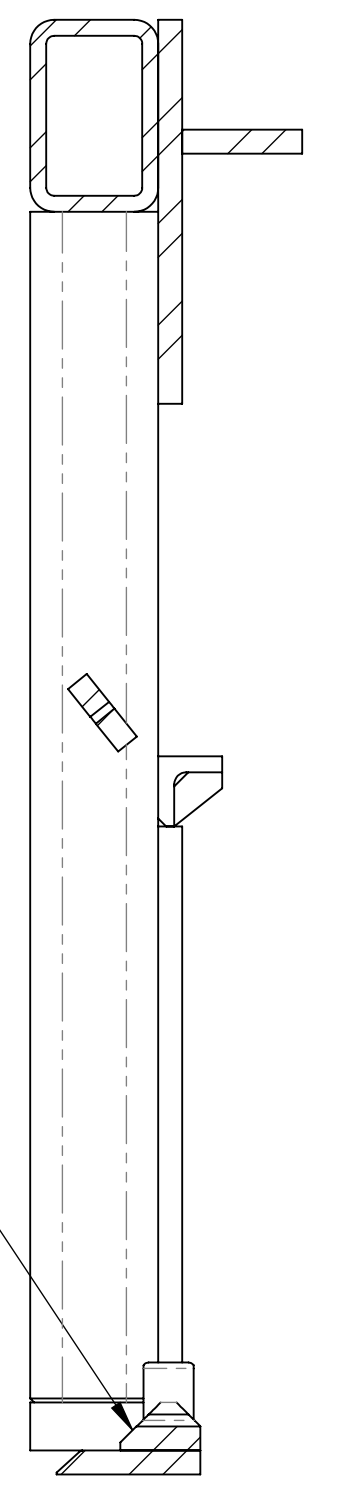
USED ON	780883	SCALE	1:8	DATE	07-07-20
---------	--------	-------	-----	------	----------

DRN	KB	CHK	APP	JOB NO	RD150002	SHEET	1 OF 2
-----	----	-----	-----	--------	----------	-------	--------

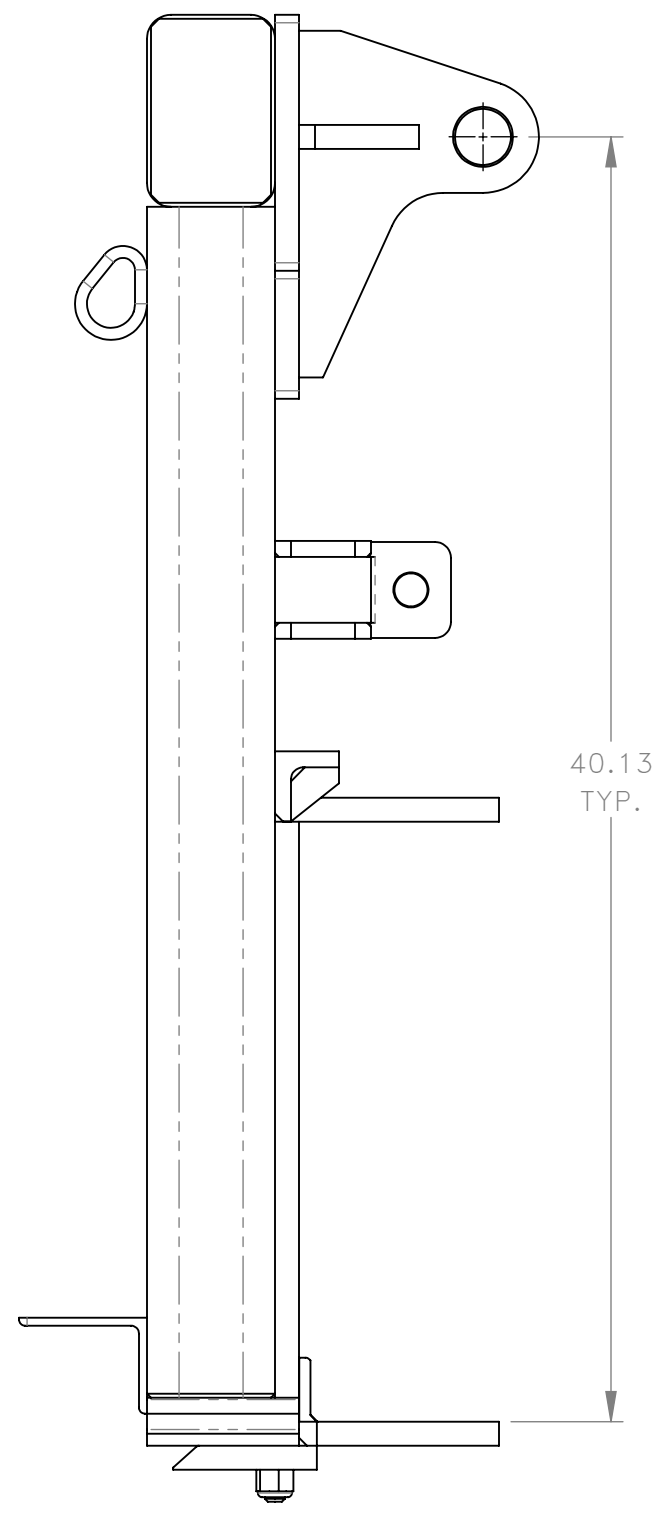
DWG SIZE	C	CATALOG	N	DWG NO	800335
----------	---	---------	---	--------	--------



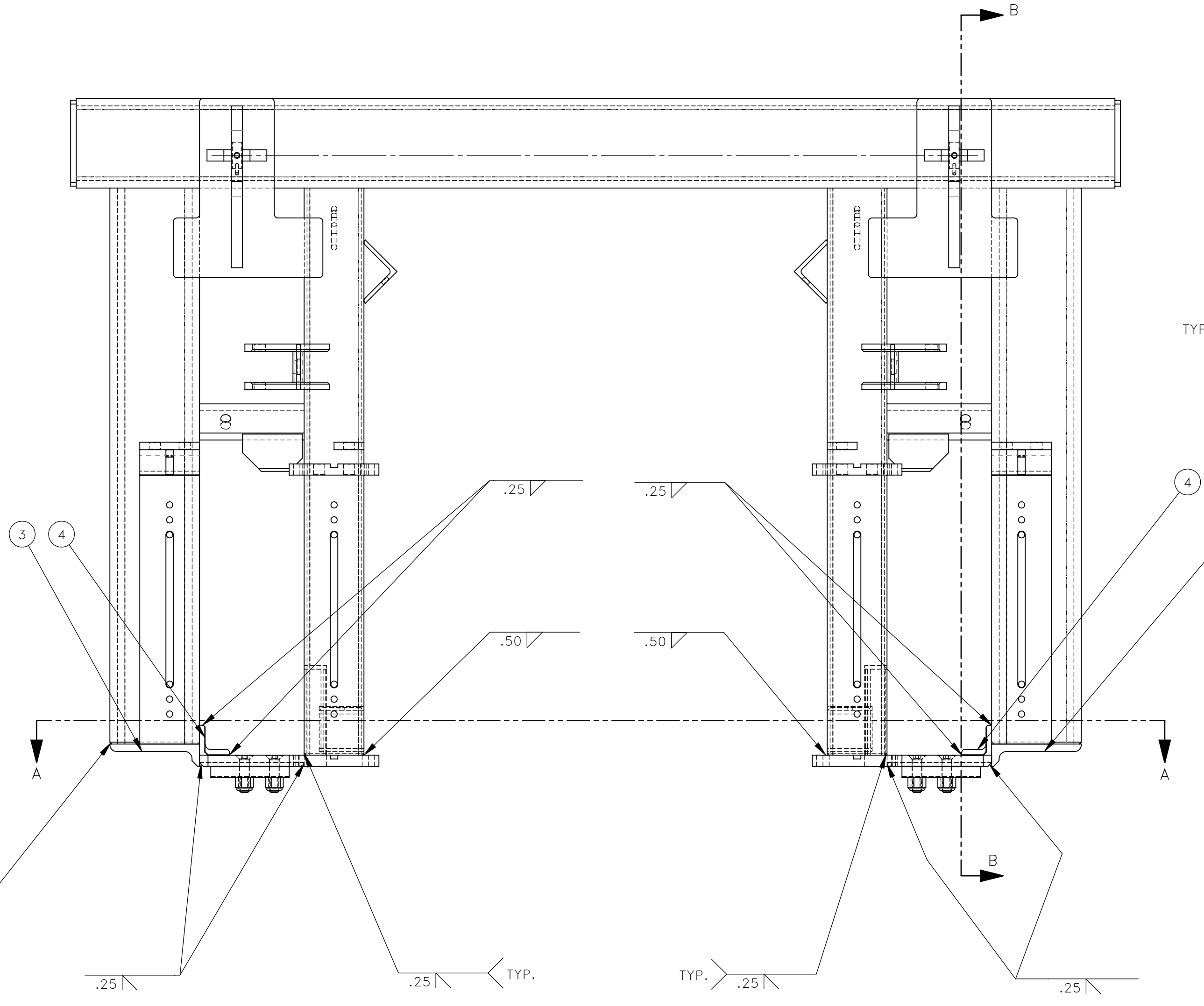
SECTION A-A



SECTION B-B



40.13
TYP.



TYP. .38
.38

REV	EN	DESCRIPTION	DATE	DRN
1	5102	NEW RELEASE	7-20	KPB
DIMENSION TOLERANCES UNLESS OTHERWISE SPECIFIED				
LINEAR		.XX=±.03	.XXX=±.010	
ANGULAR		X°=±1°	X.X°=±.5°	
SURFACE FINISH NOT TO EXCEED		125 ✓	SMOOTH ALL SHARP EDGES CLEAN ALL WELDS	
THIS PRINT AND ALL INFORMATION WITHIN BELONGS TO RACINE RAILROAD PRODUCTS				
RACINE RAILROAD PRODUCTS				
RACINE, WISCONSIN USA				
DESCRIPTION INSTRUCTIONS, SETTER ARM DOWN STOP				
MATERIAL REFERENCE				
USED ON		780883	SCALE 1:6	DATE 07-07-20
DRN KB	CHK	APP	JOB NO RD150002	SHEET 2 OF 2
DWG SIZE C	CATALOG N		DWG NO 800335	