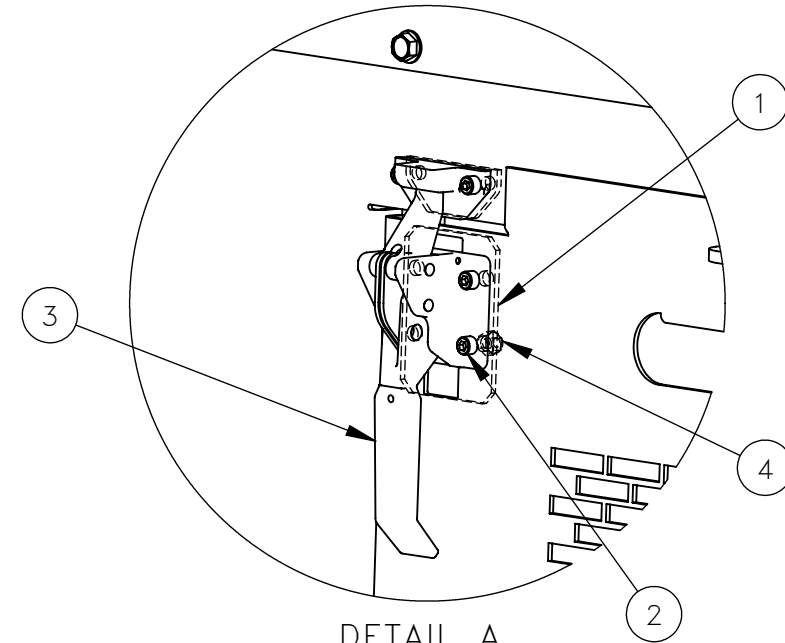
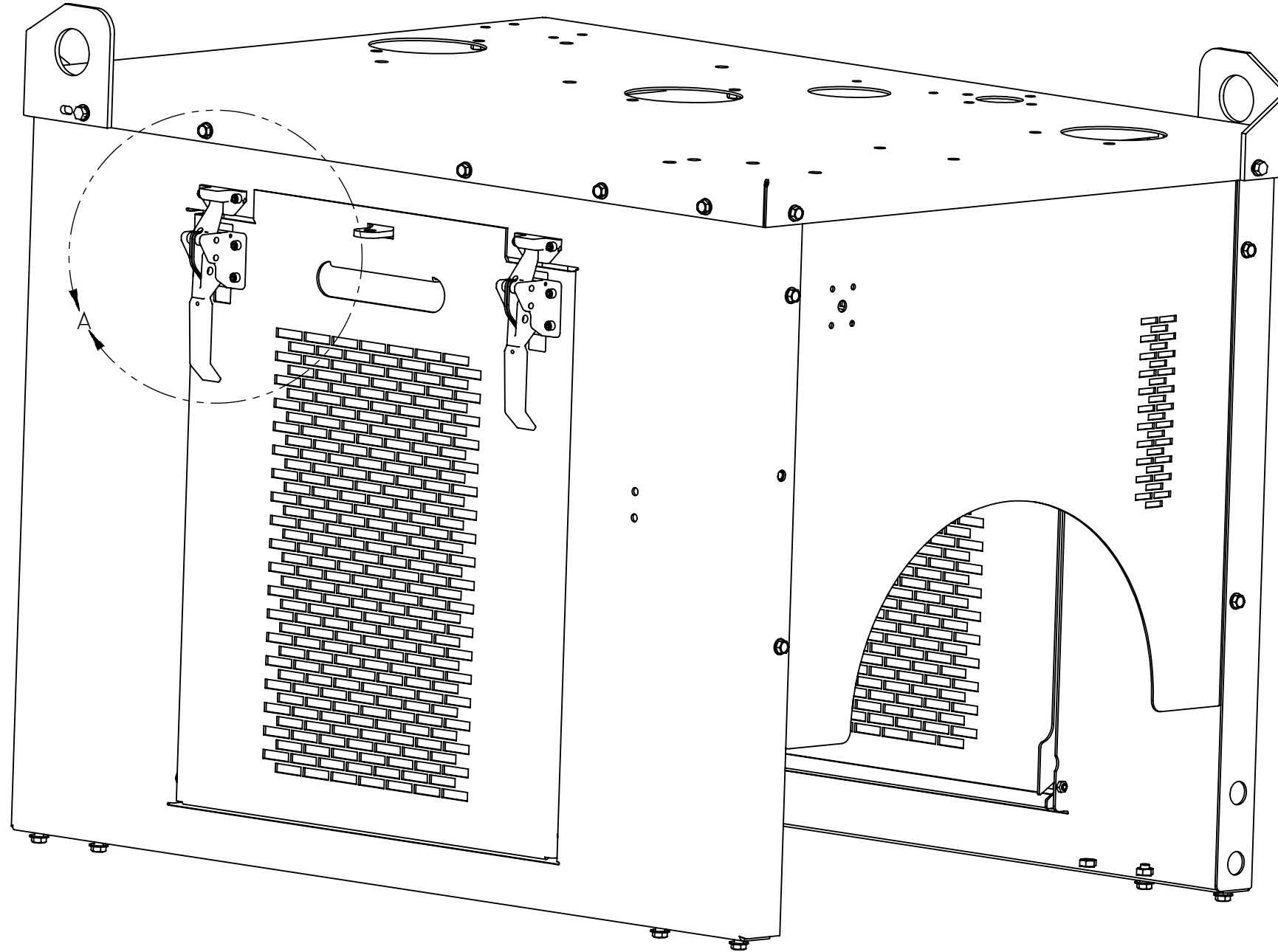


KIT TO CONVERT EXISTING CUMMINS QSF2.8 ENGINE DOOR LATCH,  
REPLACING FLUSH MOUNT LATCH WITH OVER CENTER LATCH



DETAIL A  
SCALE 1 : 4

NO.	QTY	DESCRIPTION	PART NO.
1	REF	FLAT, MOUNT	321720
2	REF	SCR, SOC: .25-20 X 1	400778
3	REF	LATCH, DOOR	475404
4	REF	NUT, HEX ES: .25-20	491232

REV	EN	DESCRIPTION	DATE	DRN
1	5266	NEW RELEASE	9-20	MAE
2	5356	INSTRUCTIONS, CUMMINS QSF2.8 ENCLOSURE DOOL LATCH WAS INSTRUCTIONS, ENGINE DOOR LATCH	10-20	MAE

DIMENSION TOLERANCES UNLESS OTHERWISE SPECIFIED

LINEAR	.XX=±.03	.XXX=±.010
ANGULAR	X°=±1°	X.X°=±.5°

SURFACE FINISH 125 ✓ NOT TO EXCEED  
SMOOTH ALL SHARP EDGES  
CLEAN ALL WELDS

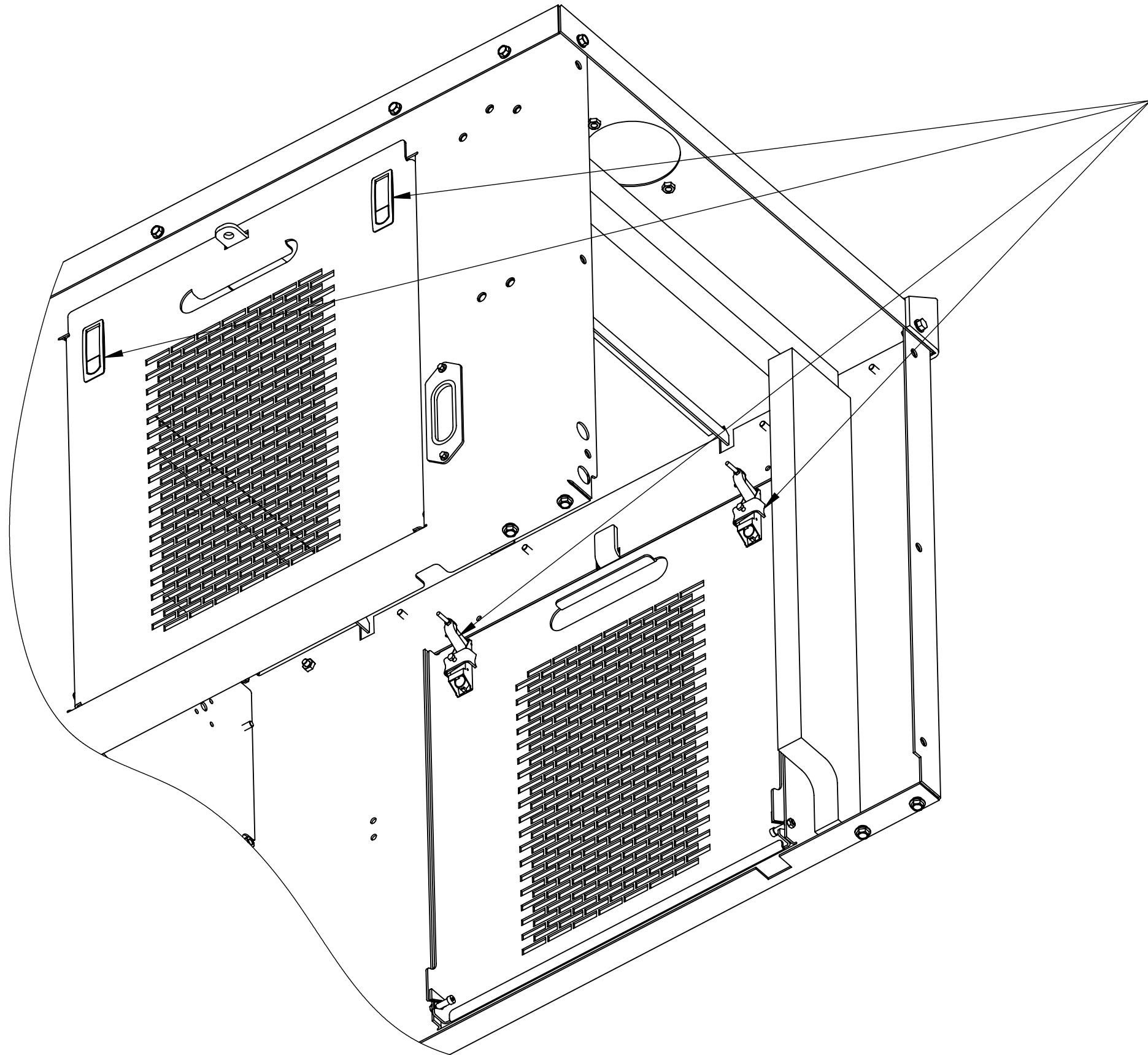
THIS PRINT AND ALL INFORMATION WITHIN BELONGS TO RACINE RAILROAD PRODUCTS

**RACINE RAILROAD PRODUCTS**  
RACINE, WISCONSIN USA

DESCRIPTION  
INSTRUCTIONS, CUMMINS QSF2.8 ENCLOSURE DOOR LATCH

MATERIAL  
SEE BOM

USED ON	793090	SCALE	1:6	DATE	09-01-20
DRN	ME	CHK	APP	JOB NO	RD190002
				SHEET	1 OF 4
DWG SIZE	B	CATALOG	N	DWG NO	800336



REMOVE EXISTING  
FLUSH MOUNT  
DOOR LATCHES

REV	EN	DESCRIPTION	DATE	DRN
1	5266	NEW RELEASE	9-20	MAE
2	5356	INSTRUCTIONS, CUMMINS QSF2.8 ENCLOSURE DOOR LATCH WAS INSTRUCTIONS, ENGINE DOOR LATCH	10-20	MAE

DIMENSION TOLERANCES UNLESS OTHERWISE SPECIFIED

LINEAR	.XX=±.03	.XXX=±.010
ANGULAR	X°=±1°	X.X°=±.5°

SURFACE FINISH 125/✓ NOT TO EXCEED  
SMOOTH ALL SHARP EDGES  
CLEAN ALL WELDS

THIS PRINT AND ALL INFORMATION WITHIN BELONGS TO RACINE RAILROAD PRODUCTS

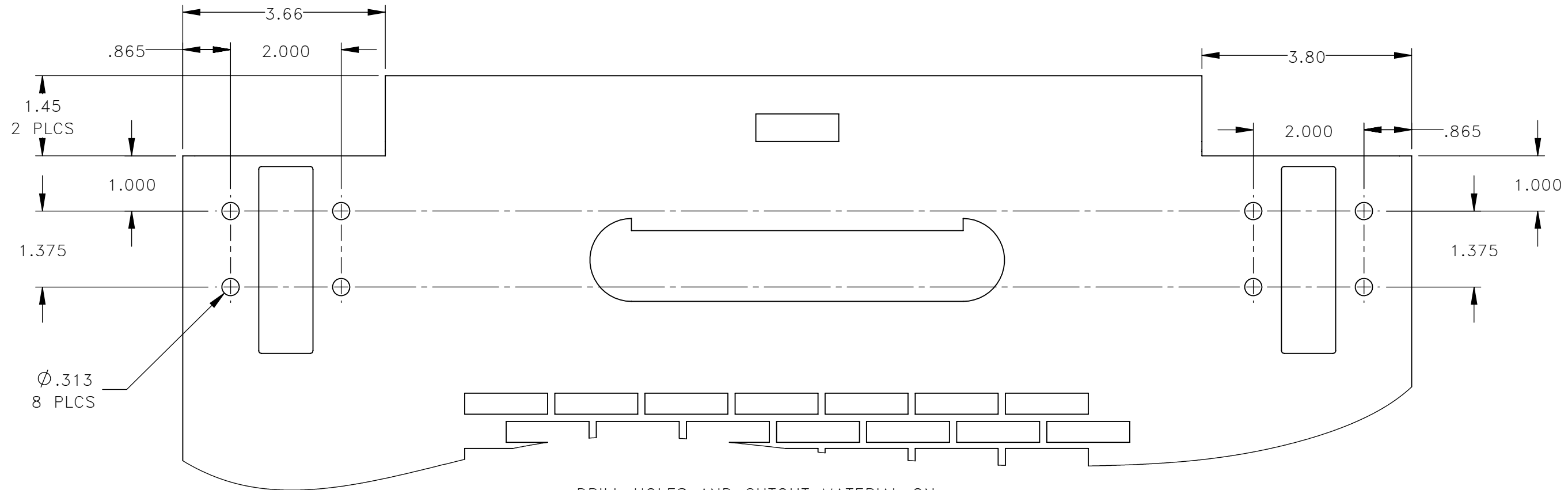
**RACINE RAILROAD PRODUCTS**  
RACINE, WISCONSIN USA

DESCRIPTION  
INSTRUCTIONS, CUMMINS QSF2.8 ENCLOSURE DOOR LATCH

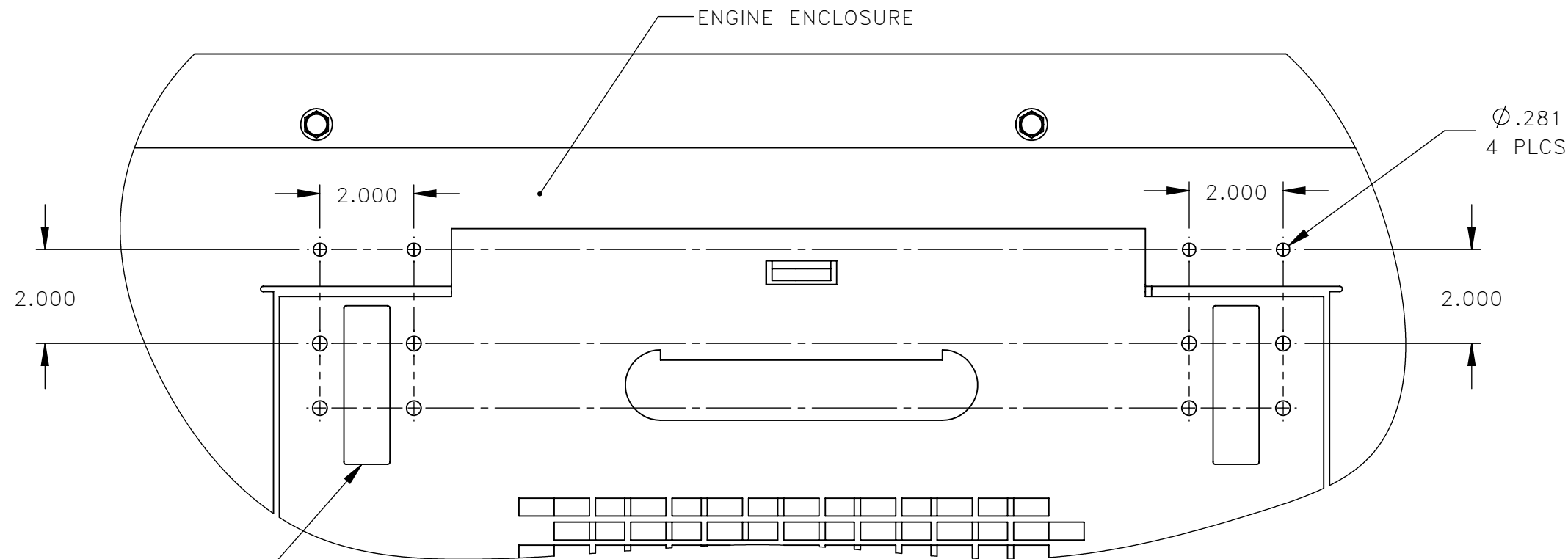
MATERIAL  
SEE BOM

USED ON	793090	SCALE	1:6	DATE	09-01-20
DRN	ME	CHK	APP	JOB NO	RD190002
DWG SIZE	B	CATALOG	N	DWG NO	800336
				SHEET	2 OF 4

2



DRILL HOLES AND CUTOUT MATERIAL ON BOTH ENGINE COVERS AS ILLUSTRATED



DRILL HOLES THRU ENGINE ENCLOSURE AS ILLUSTRATED

REV	EN	DESCRIPTION	DATE	DRN
1	5266	NEW RELEASE	9-20	MAE
2	5356	INSTRUCTIONS, CUMMINS QSF2.8 ENCLOSURE DOOL LATCH WAS INSTRUCTIONS, ENGINE DOOR LATCH	10-20	MAE

DIMENSION TOLERANCES UNLESS OTHERWISE SPECIFIED

LINEAR	.XX=±.03	.XXX=±.010
ANGULAR	X°=±1°	X.X°=±.5°

SURFACE FINISH 125 ✓ NOT TO EXCEED  
SMOOTH ALL SHARP EDGES  
CLEAN ALL WELDS

THIS PRINT AND ALL INFORMATION WITHIN BELONGS TO RACINE RAILROAD PRODUCTS

**RACINE RAILROAD PRODUCTS**  
RACINE, WISCONSIN USA

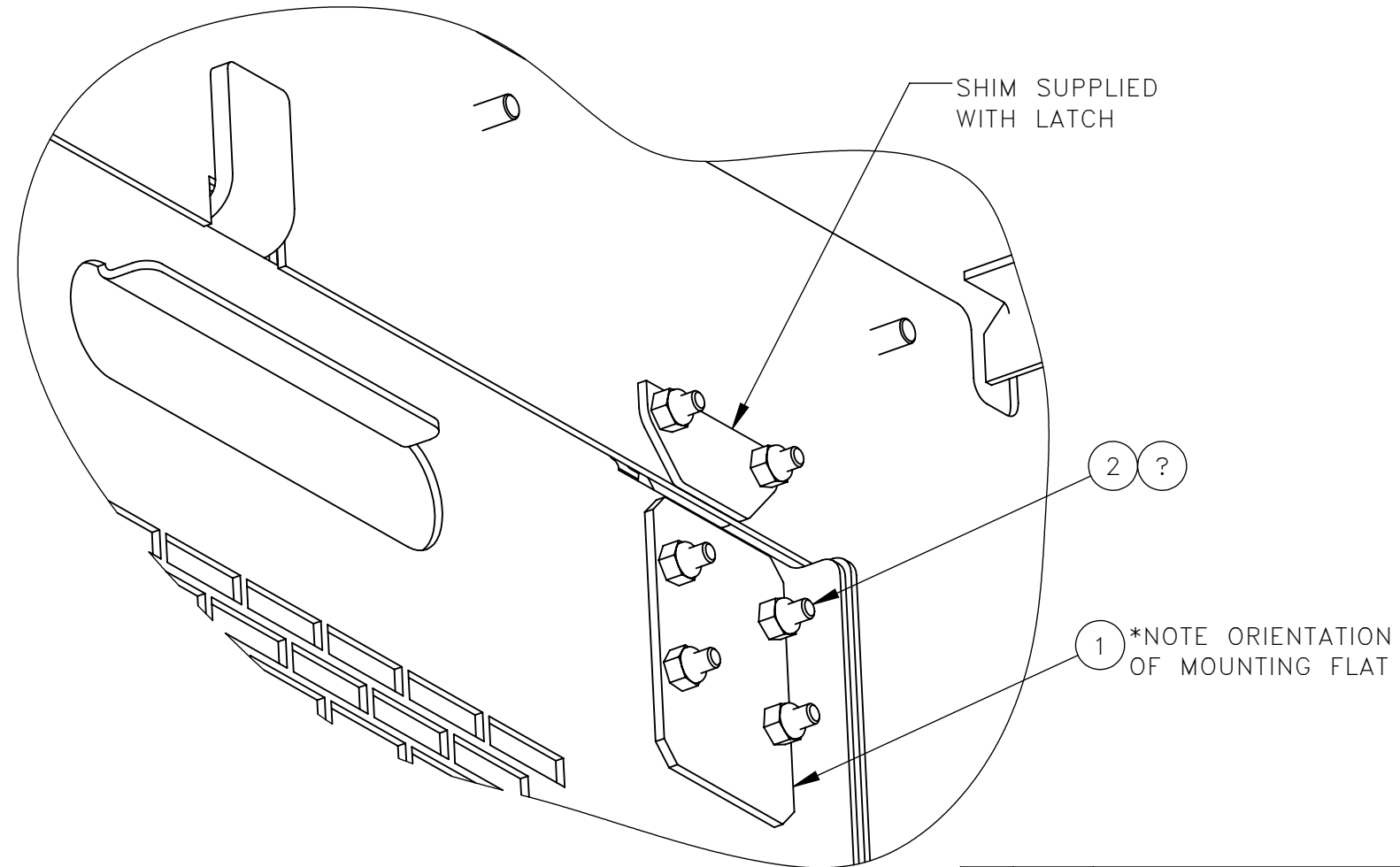
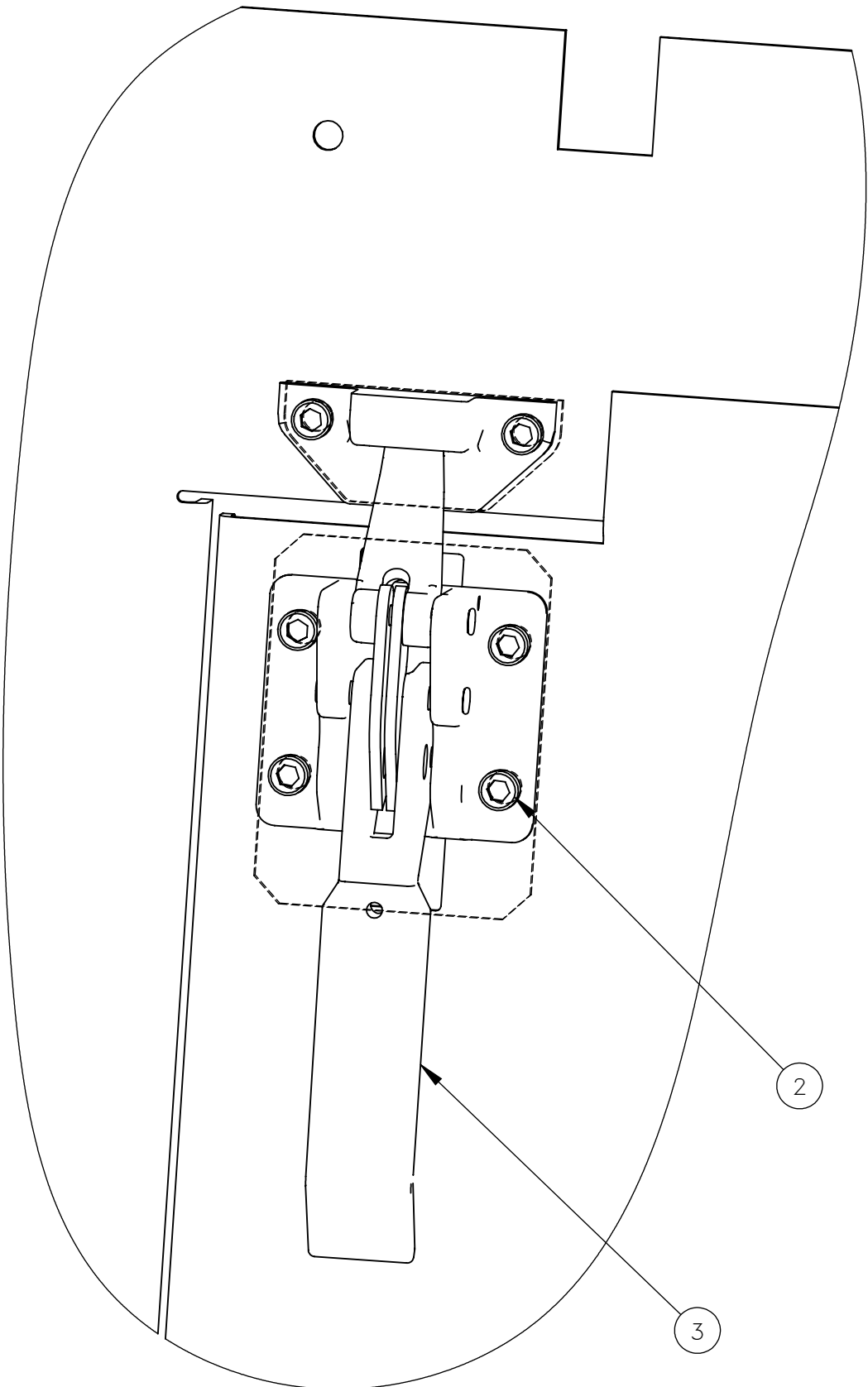
DESCRIPTION  
INSTRUCTIONS, CUMMINS QSF2.8 ENCLOSURE DOOR LATCH

MATERIAL  
SEE BOM

USED ON 793090 SCALE 1:6 DATE 09-01-20

DRN ME CHK APP JOB NO RD190002 SHEET 3 OF 4

DWG SIZE B CATALOG N DWG NO 800336



INSIDE ENGINE COVER VIEW

INSTALL LATCH, AND MOUNTING FLAT  
USING SUPPLIED FASTENERS

REV	EN	DESCRIPTION	DATE	DRN
1	5266	NEW RELEASE	9-20	MAE
2	5356	INSTRUCTIONS, CUMMINS QSF2.8 ENCLOSURE DOOR LATCH WAS INSTRUCTIONS, ENGINE DOOR LATCH	10-20	MAE

DIMENSION TOLERANCES UNLESS OTHERWISE SPECIFIED

LINEAR	.XX=±.03	.XXX=±.010
ANGULAR	X°=±1°	X.X°=±.5°

SURFACE FINISH 125/✓ NOT TO EXCEED  
SMOOTH ALL SHARP EDGES  
CLEAN ALL WELDS

THIS PRINT AND ALL INFORMATION WITHIN BELONGS TO RACINE RAILROAD PRODUCTS

**RACINE RAILROAD PRODUCTS**  
RACINE, WISCONSIN USA

DESCRIPTION  
INSTRUCTIONS, CUMMINS QSF2.8 ENCLOSURE DOOR LATCH

MATERIAL  
SEE BOM

USED ON	793090	SCALE	DATE
DRN	CHK	APP	JOB NO
ME			RD190002
DWG SIZE	CATALOG	DWG NO	SHEET
B	N	800336	4 OF 4