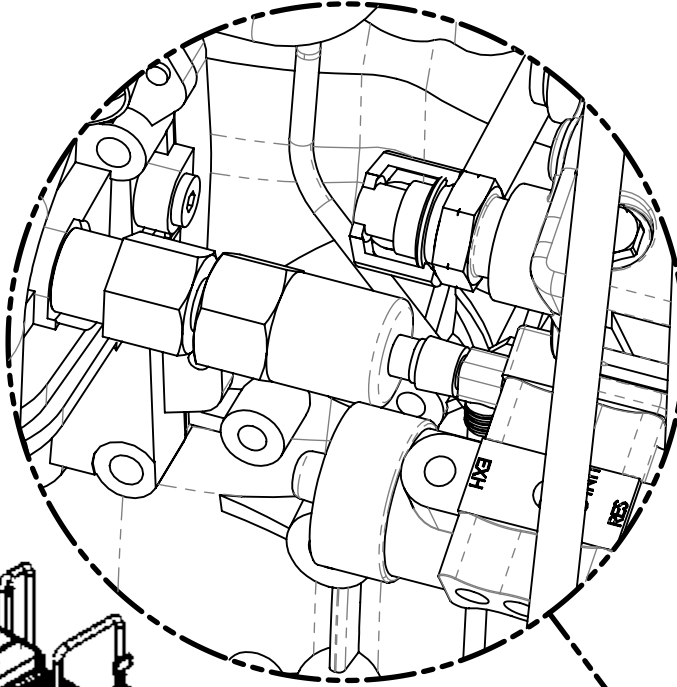
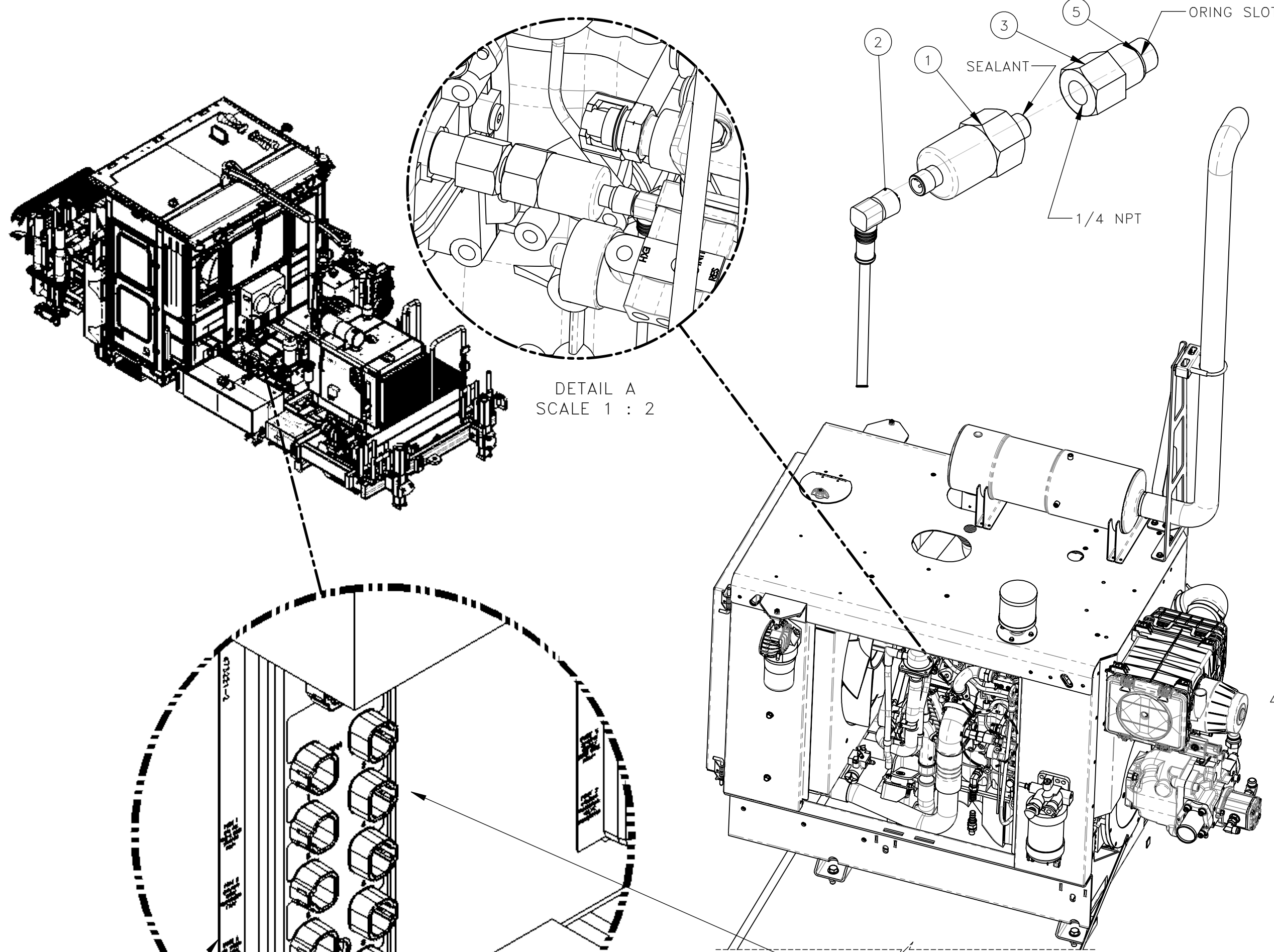
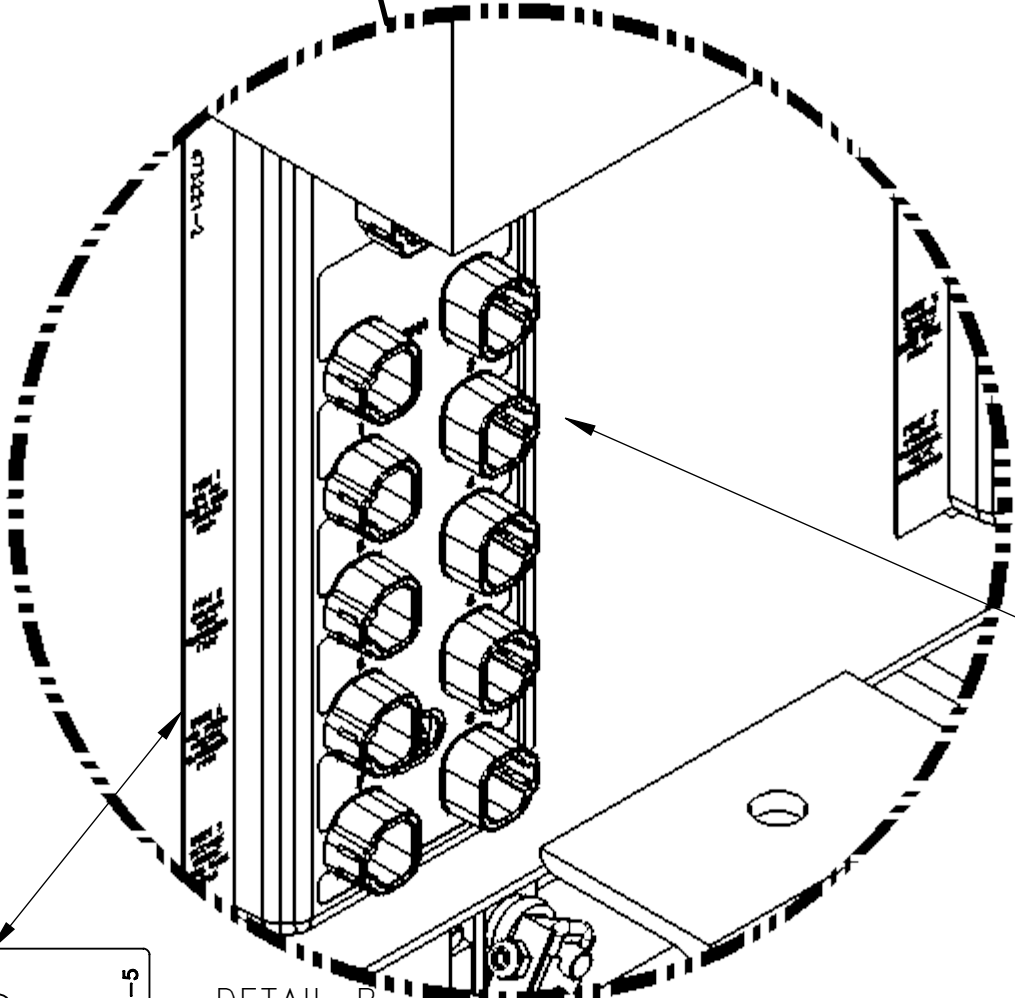


NO.	QTY	DESCRIPTION	PART NO.
1	1	TRANSDUCER, PRESSURE	475566
2	1	CABLE, MICRO: 4 PIN(F) 90° X 4 PIN DEUTSCH 4 M	473066
3	1	ADAPTER, .25 NPT(F) X M18(M)	321975
4	1	PLACARD, DB-5	475567
5	1	O-RING, .644 ID X .087 W	407139

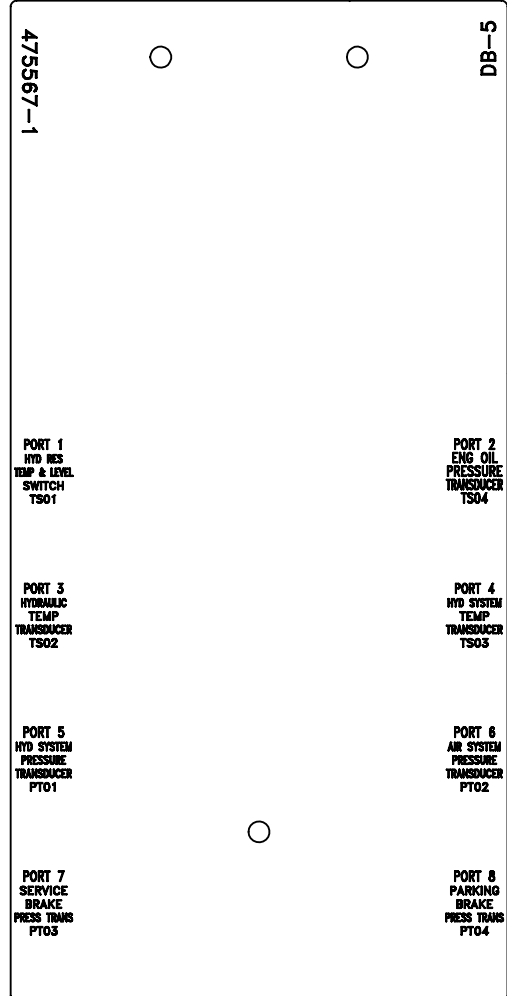


DETAIL A
SCALE 1 : 2



DETAIL B
SCALE 1 : 2

- INSTRUCTIONS FOR KITS 793095 LONG CAB 793109 SHORT CAB:
- REMOVAL:
- INSIDE THE ENCLOSURE OF THE CUMMINS QFS3.8 ENGINE THERE IS AN OIL COOLER ASSEMBLY. REMOVE THE A M18 X 1.5 STRAIGHT PLUG (SHOWN IN FIG 1-1 CIRCLED IN RED).
 - LOCATED AT THE REAR OF THE CAB WALL. REMOVE DISTRIBUTION BOX 5 AND THE PLACARD DB-5. KEEP FASTENERS FOR REUSE (SEE DETAIL B).
- INSTALLATION:
- ASSEMBLE ORING ITEM 2 TO THE MALE THREADED END OF ADAPTER ITEM 1 PLACE INTO SLOT BETWEEN THE THREAD AND BACK (SEE DETAIL A).
 - SECURE ADAPTER ITEM 1 TO OIL COOLER ASSEMBLY (SEE DETAIL A).
 - INSTALL THE TRANSDUCER ITEM 5 TO ADAPTER ITEM 2 WITH THREAD SEALANT (SEE DETAIL A).
 - ATTACH 4 PIN(F) CABLE END ITEM 3 FOR KIT 793109 OR ITEM 4 FOR KIT 793095 TO THE TRANSDUCER ITEM 5.
 - REPLACE THE PLACARD WITH THE NEW PLACARD ITEM 5 (SHOWN IN FIG. 1-2).
 - REATTACHED THE DISTRIBUTION BOX 5 WITH THE NEW PLACARD ITEM 6 TO THE REAR OF THE CAB WALL. REUSING THE SAVED FASTENERS (SEE DETAIL B).
 - ROUTE (ITEM 3 OR 4) CABLE 4 PIN(F) END TOWARDS THE REAR CAB DISTRIBUTION BOX AND PLUG INTO PORT 2 (SEE DETAIL B).
 - UPDATE PROGRAM WITH CLONE FILE (SEE SHEET 2).



1
REPLACE THE PLACARD DB-5

FIG. 1-2

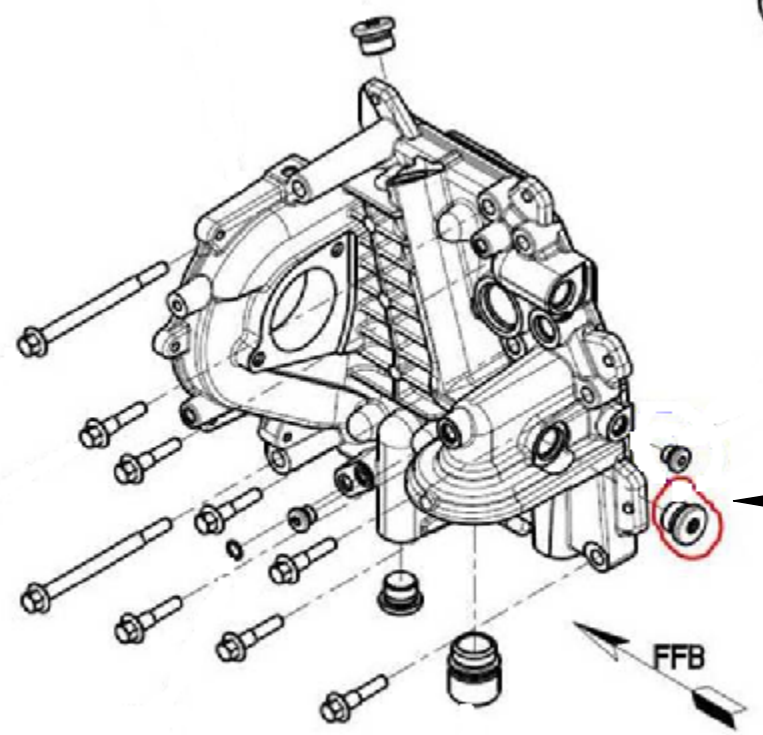
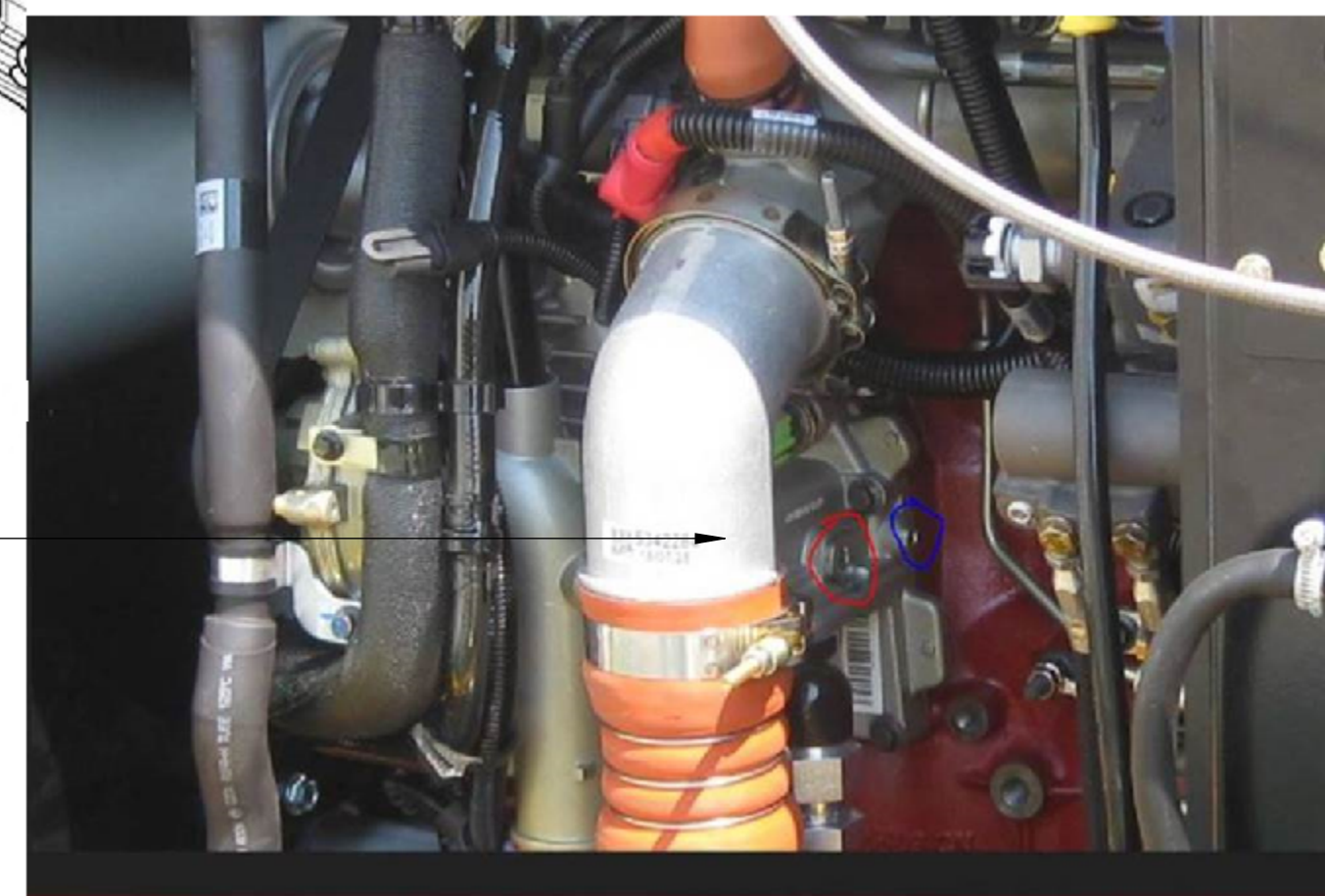


FIG. 1-1



REV	EN	DESCRIPTION	DATE	DRN
1	5422	NEW RELEASE	11-20	PR
3	5513	UPDATE INSTRUCTIONS AND VIEWS	1-21	PR
3	5564	UPDATE INSTRUCTIONS AND VIEWS	2-21	PR
4	5601	UPDATE INSTRUCTIONS AND VIEWS	3-21	PR

DIMENSION TOLERANCES UNLESS OTHERWISE SPECIFIED			
LINEAR	.XX=±.03	.XXX=±.010	
ANGULAR	X°=±1°	X.X°=±.5°	
SURFACE FINISH	125 ✓	SMOOTH ALL SHARP EDGES	NOT TO EXCEED
		CLEAN ALL WELDS	

THIS PRINT AND ALL INFORMATION WITHIN BELONGS TO RACINE RAILROAD PRODUCTS

RACINE RAILROAD PRODUCTS
RACINE, WISCONSIN USA

DESCRIPTION
INSTRUCTIONS, ATPI'S ENGINE OIL PRESSURE SENSING

MATERIAL
SEE BOM

USED ON	793095	SCALE	1:12	DATE	11-20-20
---------	--------	-------	------	------	----------

DRN	PR	CHK	APP	JOB NO	RD150003	SHEET	1 OF 2
-----	----	-----	-----	--------	----------	-------	--------

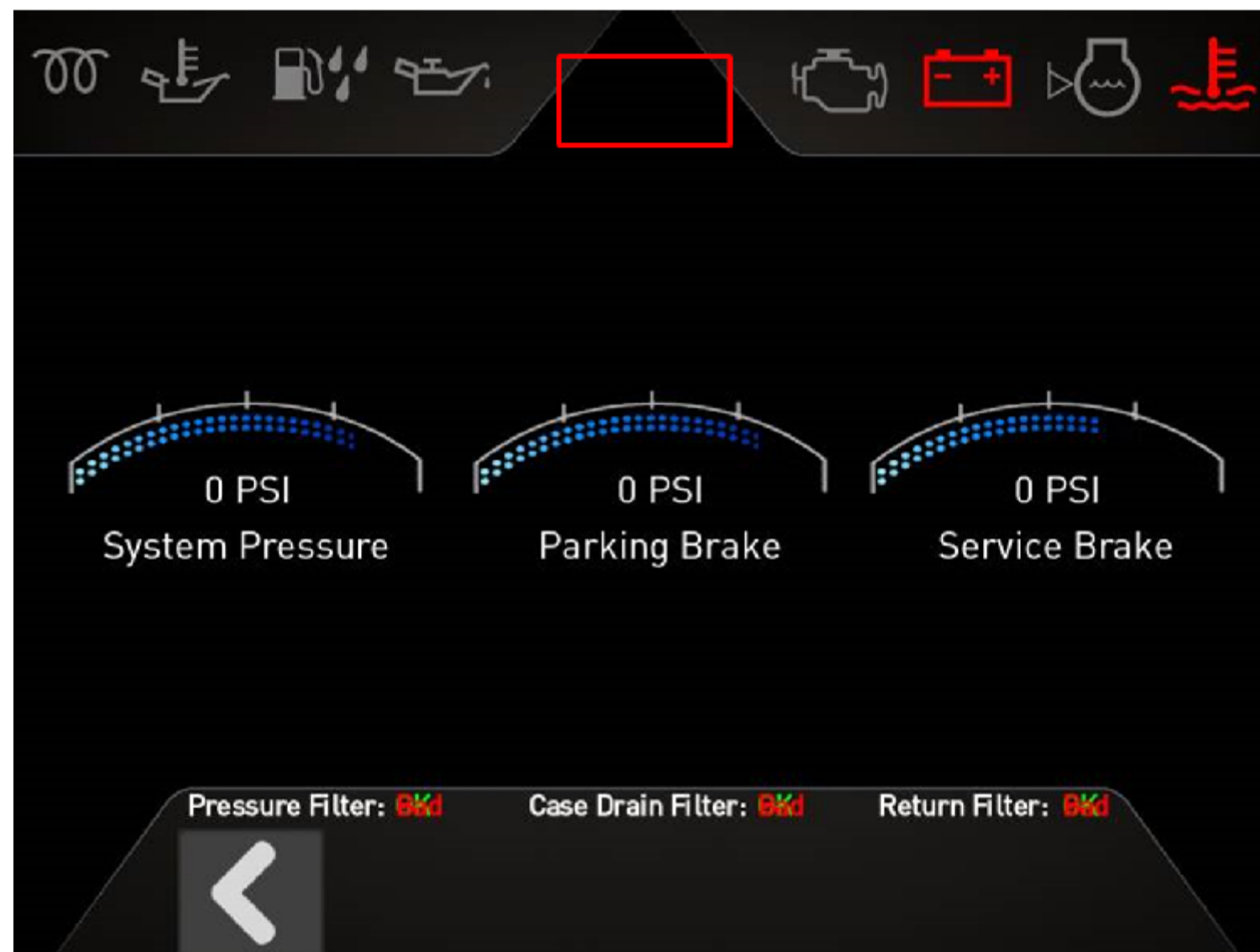
DWG SIZE	C	CATALOG	N	DWG NO	800340
----------	---	---------	---	--------	--------



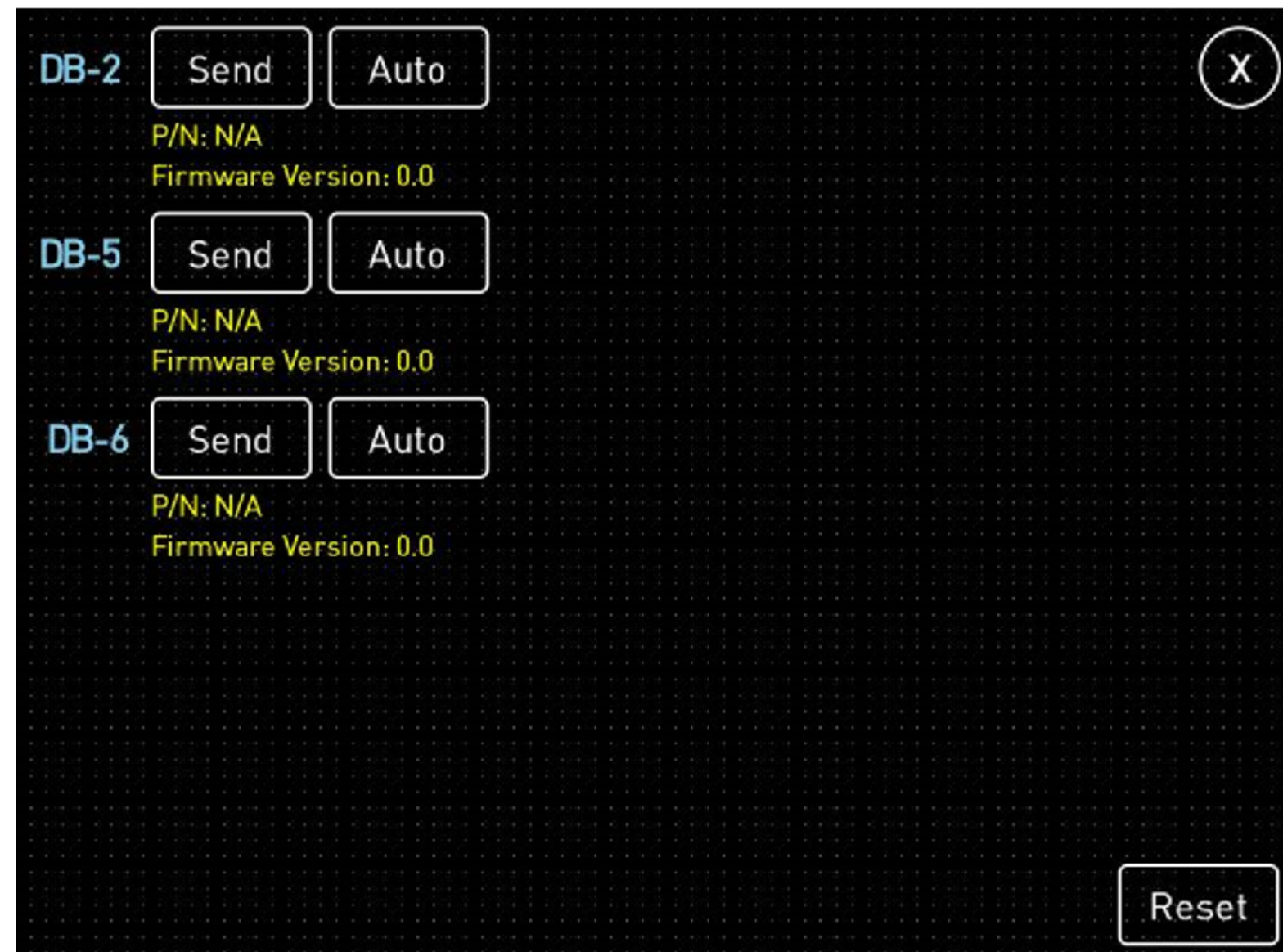
PROGRAM INSTRUCTIONS AND VIEWS:

1. USING IQANRUN 5 UPLOAD CORRECT PROGRAM CLONE FILE.
2. APTI'S ONLY:

- A. ON ENGINE TOUCH SCREEN DISPLAY, NAVIGATE TO 3rd SCREEN AND PRESS HIDDEN CONFIGURATION BUTTON.



- B. DE-SELECT AUTO FOR DB2, DB5, AND DB6.



- C. FOR DB-2, PRESS SEND AND AFTER 5 SECONDS PRESS AUTO.
- D. FOR DB-5, PRESS SEND AND AFTER 5 SECONDS PRESS AUTO.
- E. FOR DB-6, PRESS SEND AND AFTER 5 SECONDS PRESS AUTO.

3. CYCLE BATTERY POWER.

4. START THE ENGINE AND CONFIRM ENGINE OIL PRESSURE READINGS.

REV	EN	DESCRIPTION	DATE	DRN
1	5422	NEW RELEASE	11-20	PR
3	5513	UPDATE INSTRUCTIONS AND VIEWS	1-21	PR
3	5564	UPDATE INSTRUCTIONS AND VIEWS	2-21	PR
4	5601	UPDATE INSTRUCTIONS AND VIEWS	3-21	PR

DIMENSION TOLERANCES UNLESS OTHERWISE SPECIFIED

LINEAR	.XX=±.03	.XXX=±.010
ANGULAR	X°=±1°	X.X°=±.5°

SURFACE FINISH 125 ✓
NOT TO EXCEED SMOOTH ALL SHARP EDGES
CLEAN ALL WELDS

THIS PRINT AND ALL INFORMATION WITHIN
BELONGS TO RACINE RAILROAD PRODUCTS

RACINE RAILROAD PRODUCTS
RACINE, WISCONSIN USA

DESCRIPTION
ADVANCED TIE PLATE INSERTER

MATERIAL
SEE BOM

USED ON
SCALE 1:12
DATE 11-20-20

DRN PR
CHK APP
JOB NO RD150003
SHEET 2 OF 2

DWG SIZE C
CATALOG T
DWG NO 944593