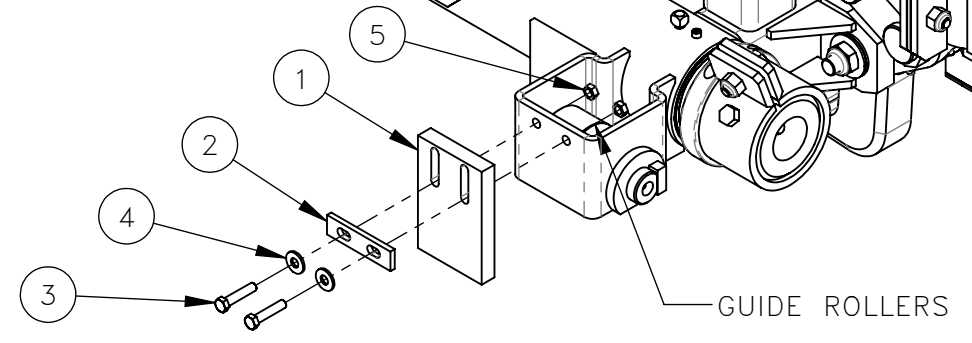
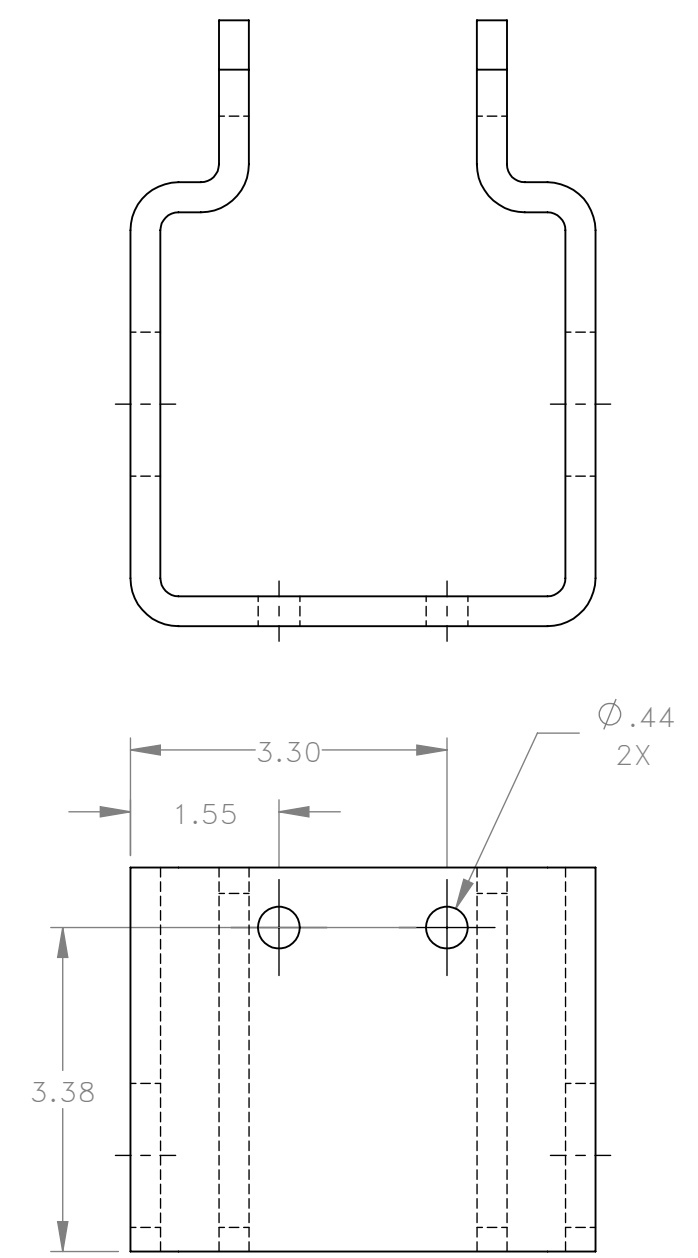


NO.	QTY	DESCRIPTION	PART NO.
1	REF	SWEEP, RAIL	320462
2	REF	FLAT	320464
3	REF	SCR, HEX: .38-16 X 1.75	400718
4	REF	WASHER, FLT: .38	401621
5	REF	NUT, HEX LOCK: .38-16	491488



- INSTRUCTIONS:
1. DRILL 2X \varnothing .44 HOLES 4 PLACES AS SHOWN
 2. ATTACH RAIL SWEEPERS WITH FASTENERS
 3. SET GUIDE ROLLERS ON TOP OF RAILS
 4. SET BOTTOM OF RAIL SWEEPERS ON TOP OF RAILS

REV	EN	DESCRIPTION	DATE	DRN
1	5452	NEW RELEASE	12-20	ASM

DIMENSION TOLERANCES UNLESS OTHERWISE SPECIFIED

LINEAR	.XX=±.03	.XXX=±.010
ANGULAR	X°=±1°	X.X°=±.5°

SURFACE FINISH 125 / NOT TO EXCEED ✓ SMOOTH ALL SHARP EDGES CLEAN ALL WELDS

THIS PRINT AND ALL INFORMATION WITHIN BELONGS TO RACINE RAILROAD PRODUCTS

RACINE RAILROAD PRODUCTS
RACINE, WISCONSIN USA

DESCRIPTION
INSTRUCTIONS, WORKHEAD RAIL SWEEP KIT

MATERIAL
SEE BOM

USED ON	793097	SCALE	1:8	DATE	12-09-20
DRN	ASM	CHK	APP	JOB NO	RD150003
DWG SIZE	C	CATALOG	N	DWG NO	800342