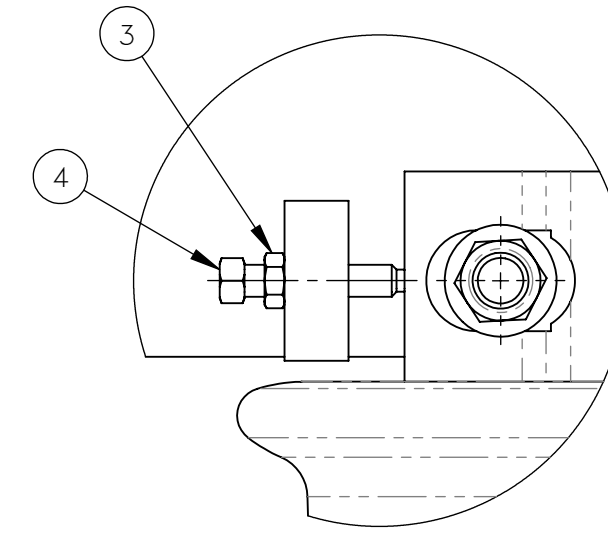
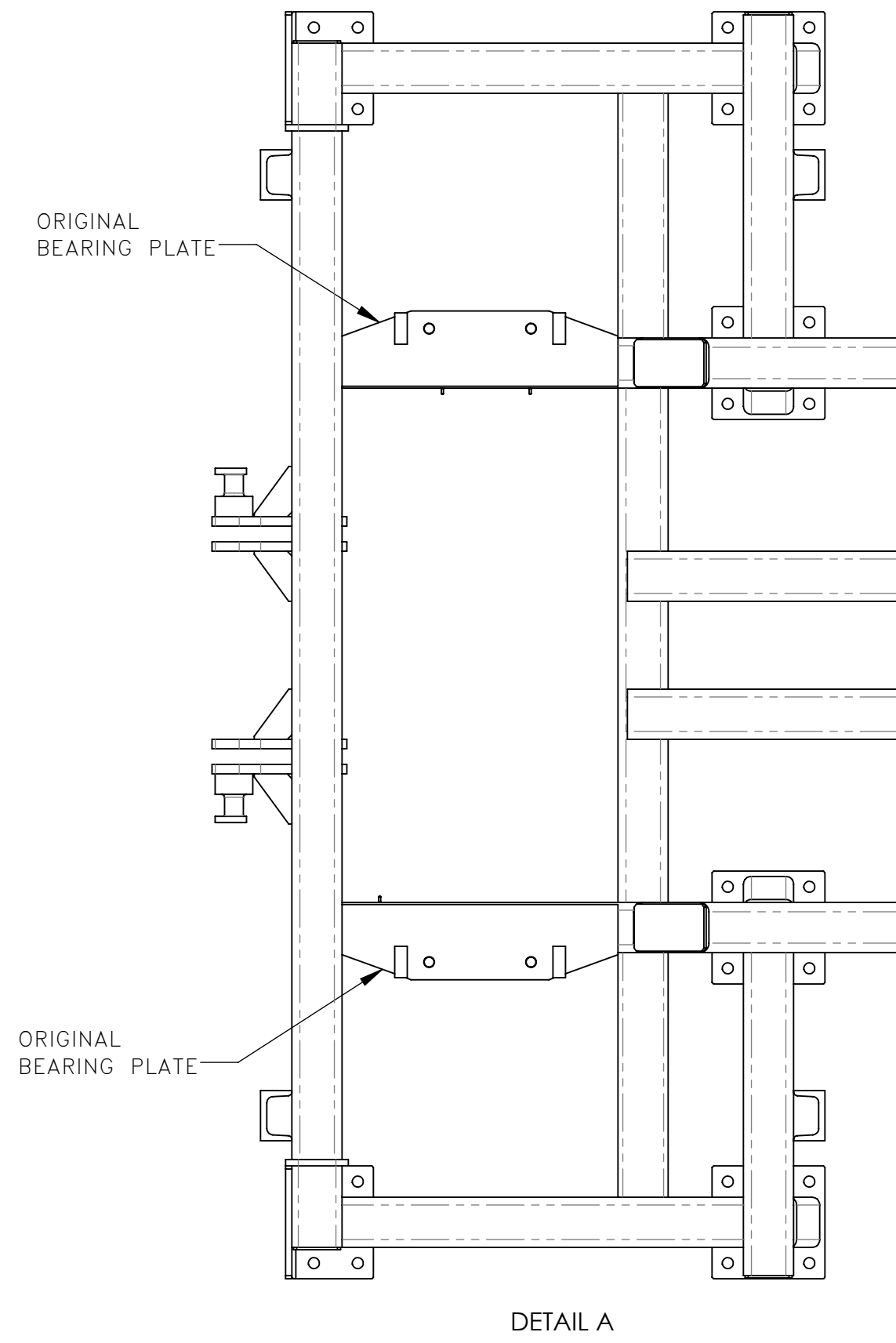
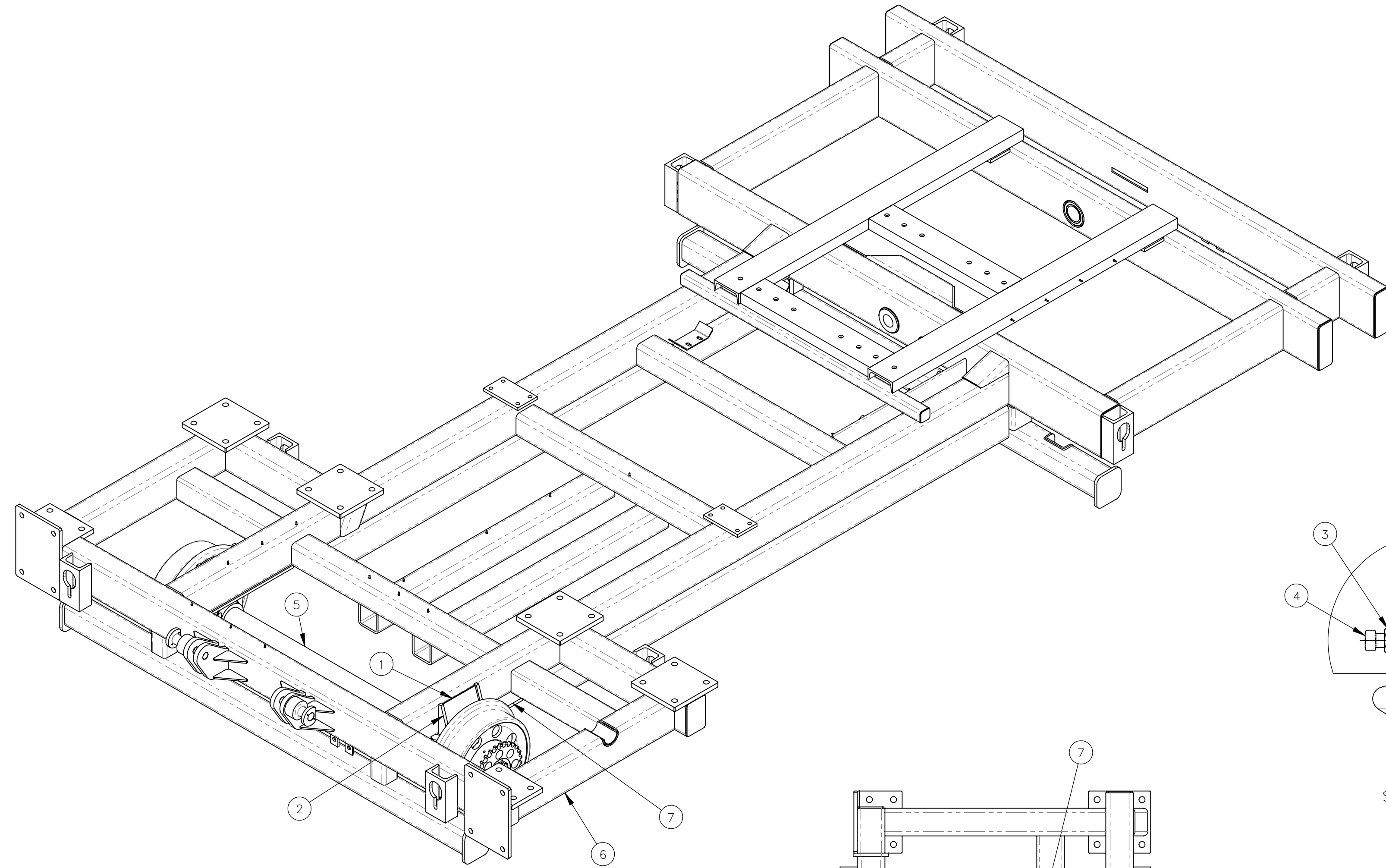
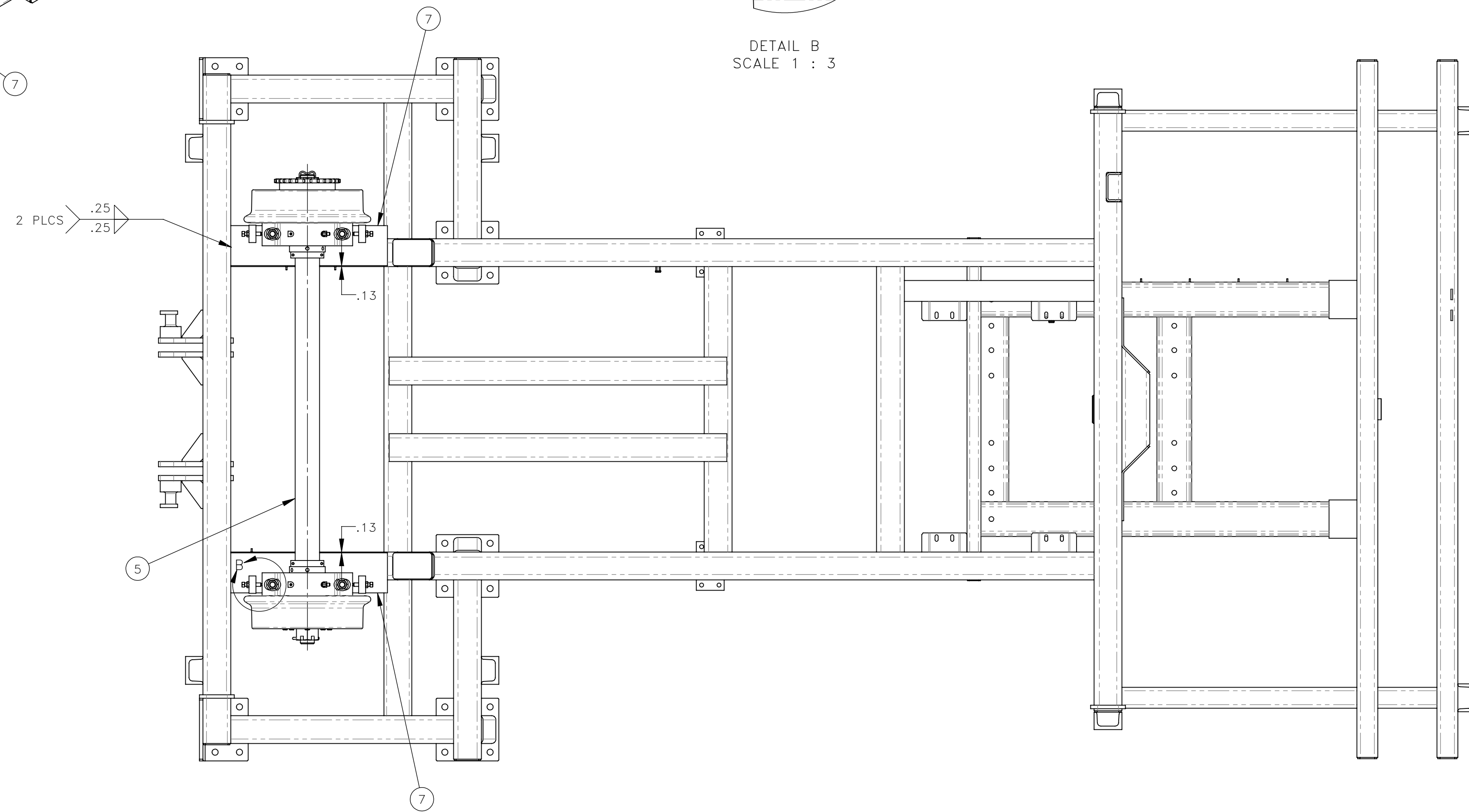


NO.	QTY	DESCRIPTION	PART NO.
1	REF	FLAT	319694
2	REF	GUSSET, .5 X 2 X 5.5	319696
3	REF	NUT, HEX JAM: .5-13	491298
4	REF	SCR, SQ SET: .5-13 X 2.5	491521
5	REF	AXLE, 3.50 DIA INS #80 28T	718912
6	REF	FRAME, INTERMEDIATE	781158
7	REF	PLATE, BEARING	781623



DETAIL B
SCALE 1 : 3



- INSTRUCTIONS TO SWAP 3.00 DIA AXLE WITH 3.50 DIA AXLE:
1. REMOVE 3.00 DIA FRONT AXLE
 2. CUT OFF ORIGINAL BEARING PLATES - SEE DETAIL A
 3. WELD NEW BEARING PLATES (7) 2 PCS
 4. WELD FLATS (STIFFENERS) (1) 2 PCS
 5. WELD GUSSETS (2) 4 PCS
 6. INSTALL (3) 718912 AXLE, 3.50 DIA INS, SET SCREWS AND JAM NUTS

REV	EN	DESCRIPTION	DATE	DRN
1	5528	NEW RELEASE		2-21 ASM

DIMENSION TOLERANCES UNLESS OTHERWISE SPECIFIED

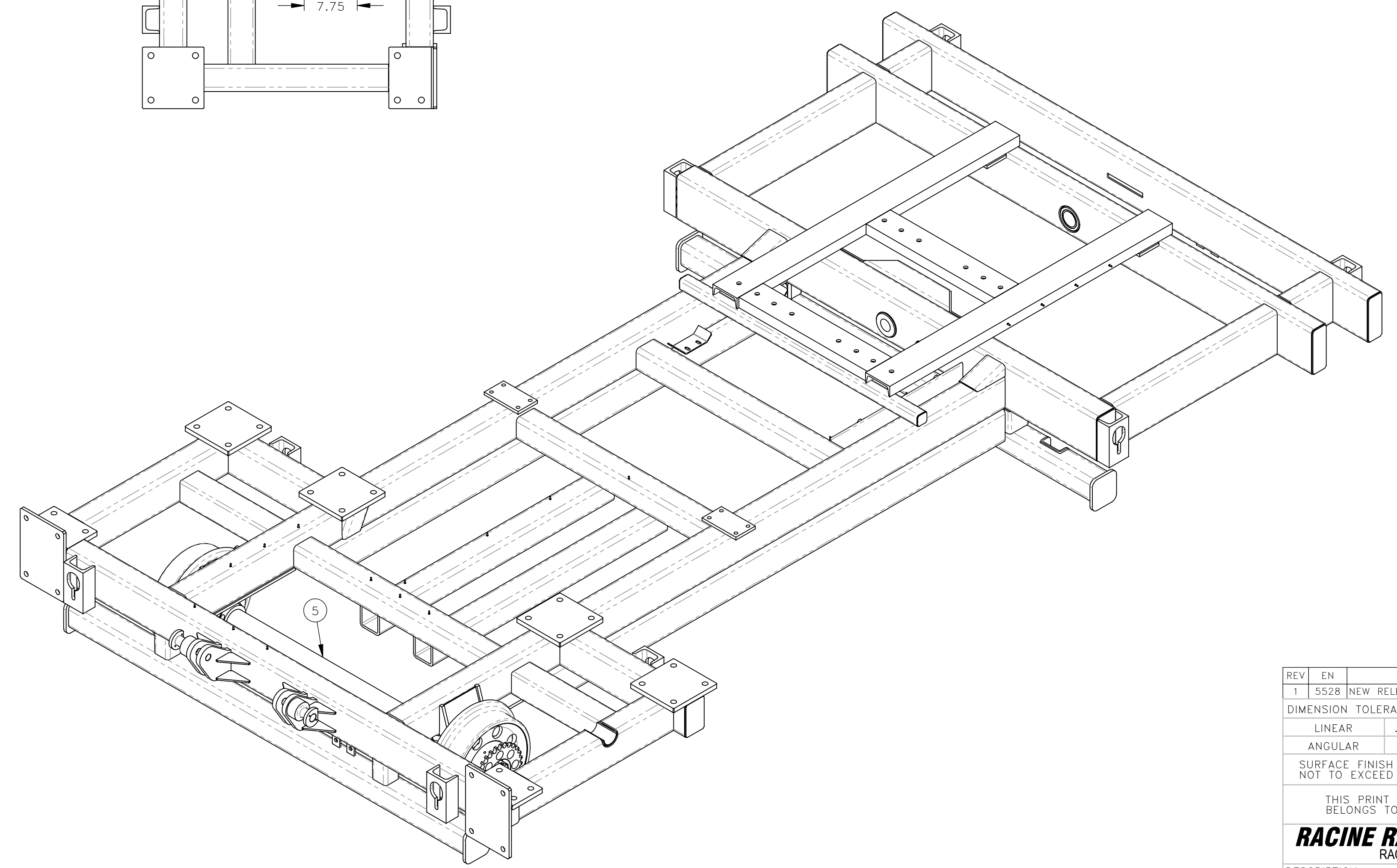
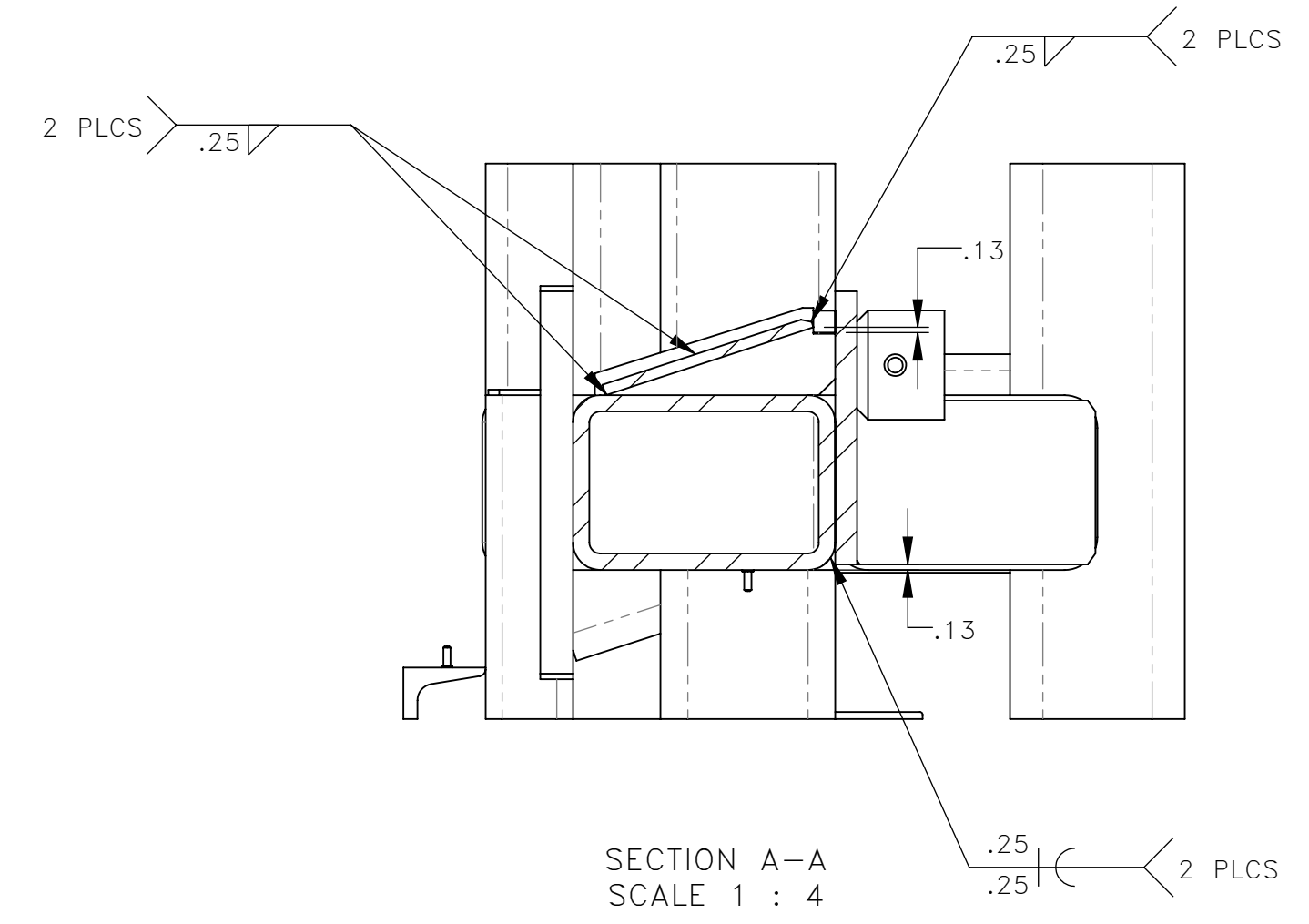
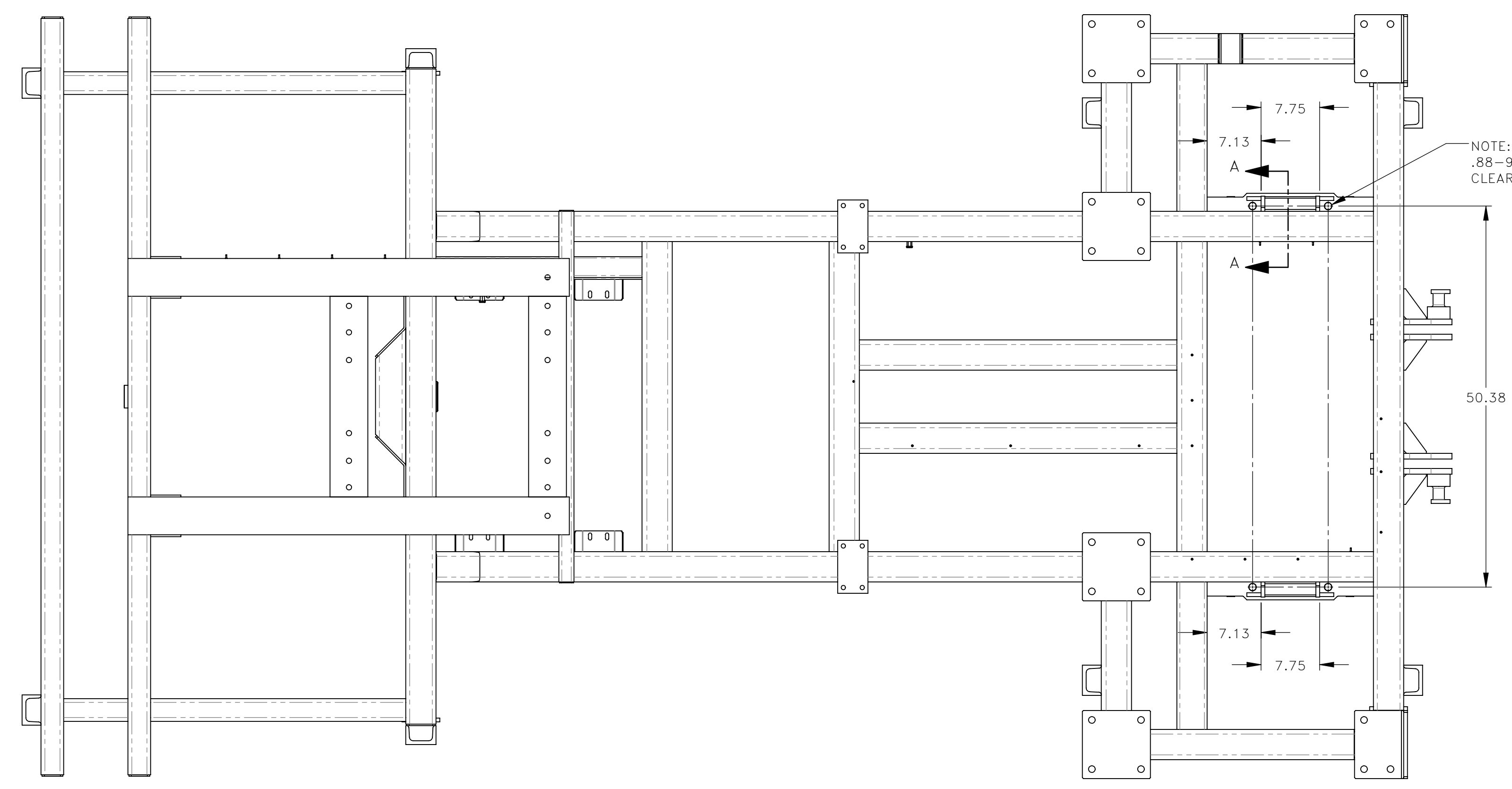
LINEAR	.XX=±.03	.XXX=±.010
ANGULAR	X' = ±1'	X.X' = ±.5'

SURFACE FINISH 125/√ SMOOTH ALL SHARP EDGES
NOT TO EXCEED CLEAN ALL WELDS

THIS PRINT AND ALL INFORMATION WITHIN
BELONGS TO RACINE RAILROAD PRODUCTS

RACINE RAILROAD PRODUCTS
RACINE, WISCONSIN USA

DESCRIPTION		MATERIAL		SCALE		DATE	
INSTRUCTIONS, 3.5" AXLE FIELD RETROFIT		SEE BOM		1:12		02-08-21	
USED ON	793107	DRN	CHK	APP	JOB NO	RD150003	SHEET
ASM							1 OF 2
DWG SIZE	D	CATALOG	K	DWG NO			800348



REV	EN	DESCRIPTION	DATE	DRN
1	5528	NEW RELEASE	2-21	ASM
DIMENSION TOLERANCES UNLESS OTHERWISE SPECIFIED				
LINEAR		.XX=±.03	.XXX=±.010	
ANGULAR		X'=±1°	X.X'=±.5°	
SURFACE FINISH		125/	SMOOTH ALL SHARP EDGES	
NOT TO EXCEED			CLEAN ALL WELDS	
THIS PRINT AND ALL INFORMATION WITHIN BELONGS TO RACINE RAILROAD PRODUCTS				
RACINE RAILROAD PRODUCTS				
RACINE, WISCONSIN USA				
DESCRIPTION				
INSTRUCTIONS, 3.5" AXLE FIELD RETROFIT				
MATERIAL				
SEE BOM				
USED ON		793107	SCALE	DATE
			1:12	02-08-21
DRN	CHK	APP	JOB NO	SHEET
ASM			RD150003	2 OF 2
DWG SIZE	CATALOG	DWG NO		
D	K		800348	