

⚠ THESE INSTRUCTIONS ARE FOR KIT 793115.

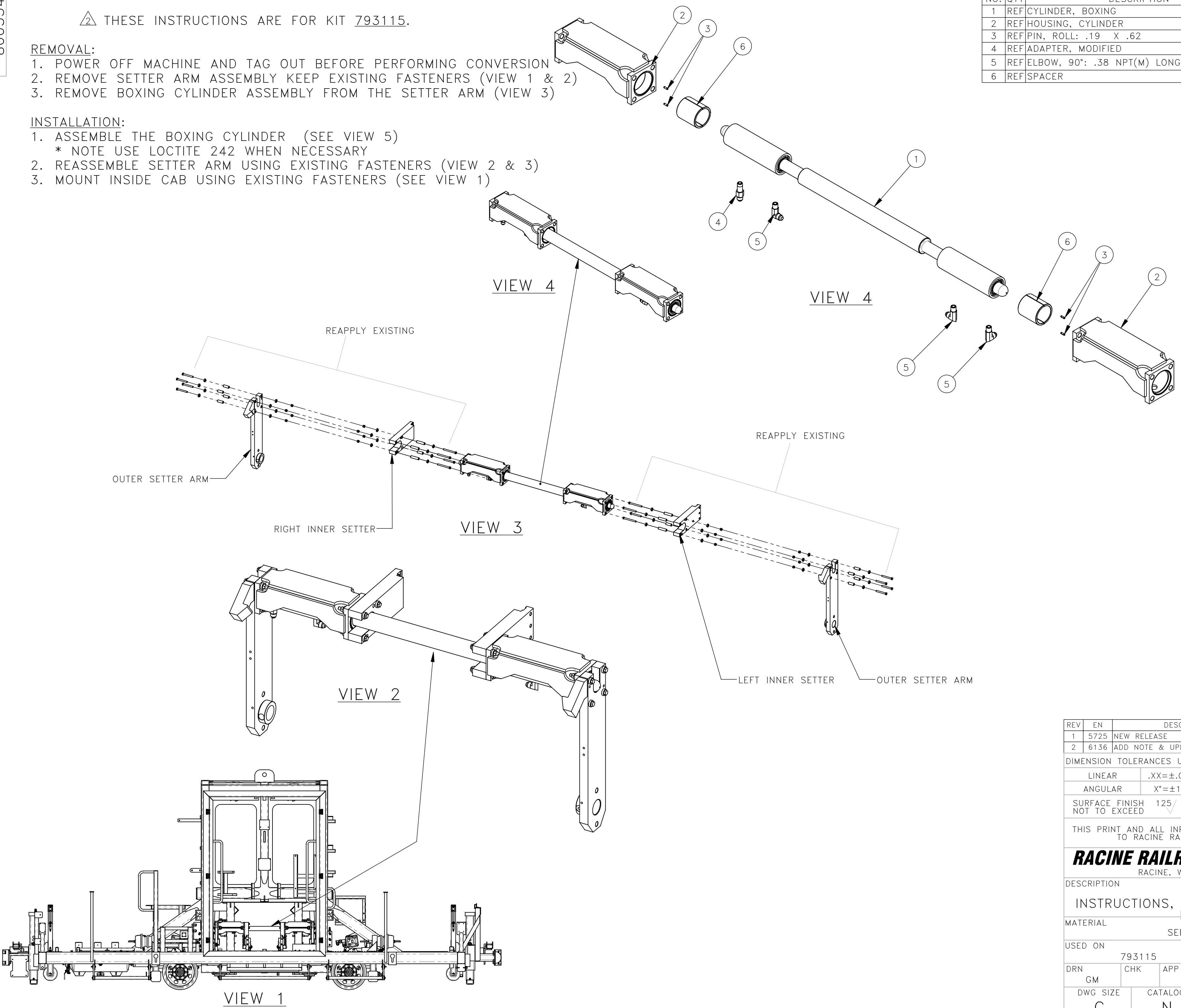
**REMOVAL:**

1. POWER OFF MACHINE AND TAG OUT BEFORE PERFORMING CONVERSION
2. REMOVE SETTER ARM ASSEMBLY KEEP EXISTING FASTENERS (VIEW 1 & 2)
3. REMOVE BOXING CYLINDER ASSEMBLY FROM THE SETTER ARM (VIEW 3)

**INSTALLATION:**

1. ASSEMBLE THE BOXING CYLINDER (SEE VIEW 5)  
\* NOTE USE LOCTITE 242 WHEN NECESSARY
2. REASSEMBLE SETTER ARM USING EXISTING FASTENERS (VIEW 2 & 3)
3. MOUNT INSIDE CAB USING EXISTING FASTENERS (SEE VIEW 1)

NO.	QTY	DESCRIPTION	PART NO.
1	REF	CYLINDER, BOXING	455137
2	REF	HOUSING, CYLINDER	775344
3	REF	PIN, ROLL: .19 X .62	401717
4	REF	ADAPTER, MODIFIED	390414
5	REF	ELBOW, 90°: .38 NPT(M) LONG X #8 JIC(M)	461994
6	REF	SPACER	382451



REV	EN	DESCRIPTION	DATE	DRN
1	5725	NEW RELEASE	6-21	GM
2	6136	ADD NOTE & UPDATED VIEWS	2-22	PR

DIMENSION TOLERANCES UNLESS OTHERWISE SPECIFIED

LINEAR	.XX=±.03	.XXX=±.010
ANGULAR	X°=±1°	X.X°=±.5°

SURFACE FINISH 125/✓ SMOOTH ALL SHARP EDGES  
NOT TO EXCEED CLEAN ALL WELDS

THIS PRINT AND ALL INFORMATION WITHIN BELONGS TO RACINE RAILROAD PRODUCTS

**RACINE RAILROAD PRODUCTS**  
RACINE, WISCONSIN USA

DESCRIPTION  
INSTRUCTIONS, BOXING CYLINDER KIT

MATERIAL  
SEE BOM

USED ON	793115	SCALE	DATE
		1:32	06-02-21

DRN	GM	CHK	APP	JOB NO	SHEET
				RD190002	1 OF 1

DWG SIZE	C	CATALOG	N	DWG NO	800354
----------	---	---------	---	--------	--------