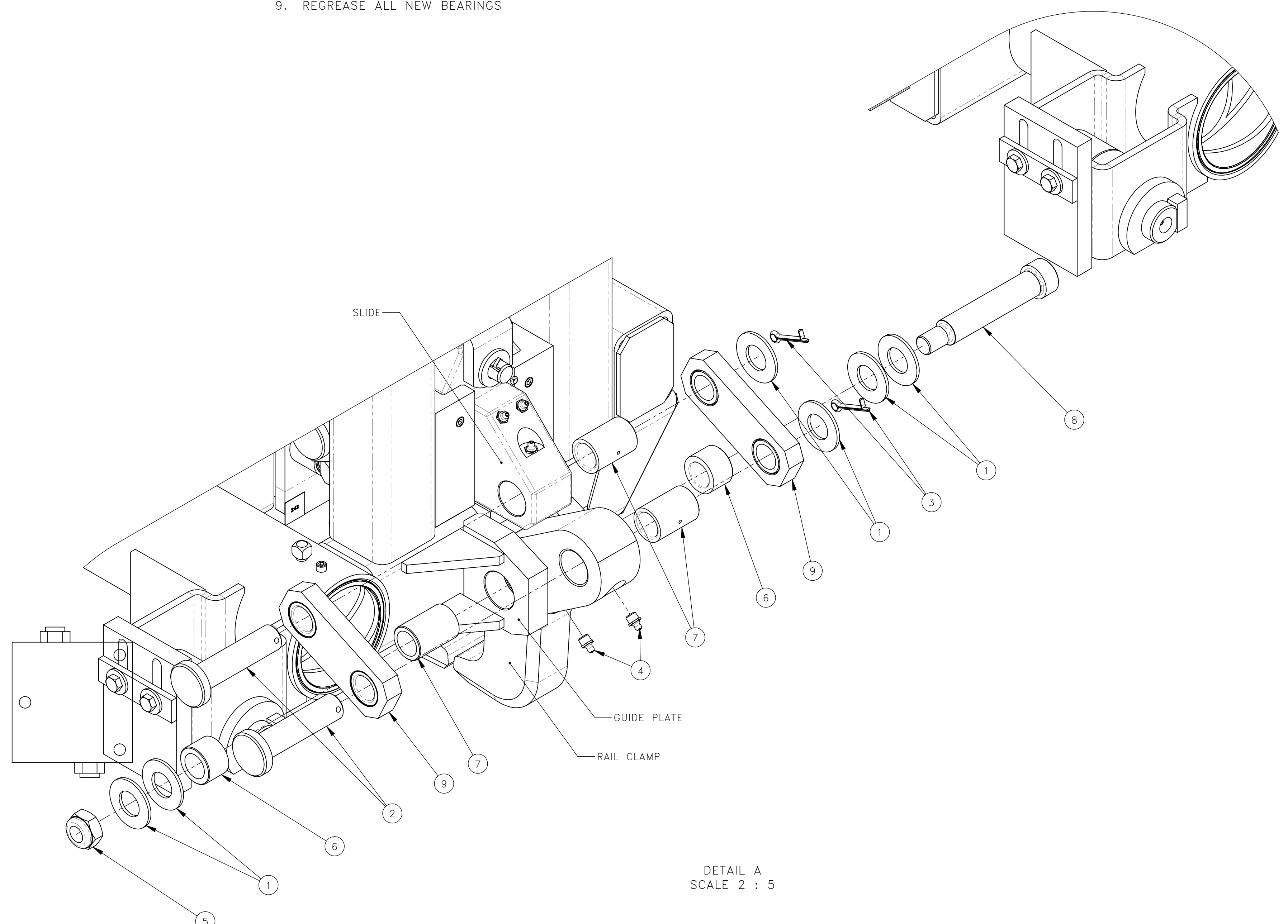
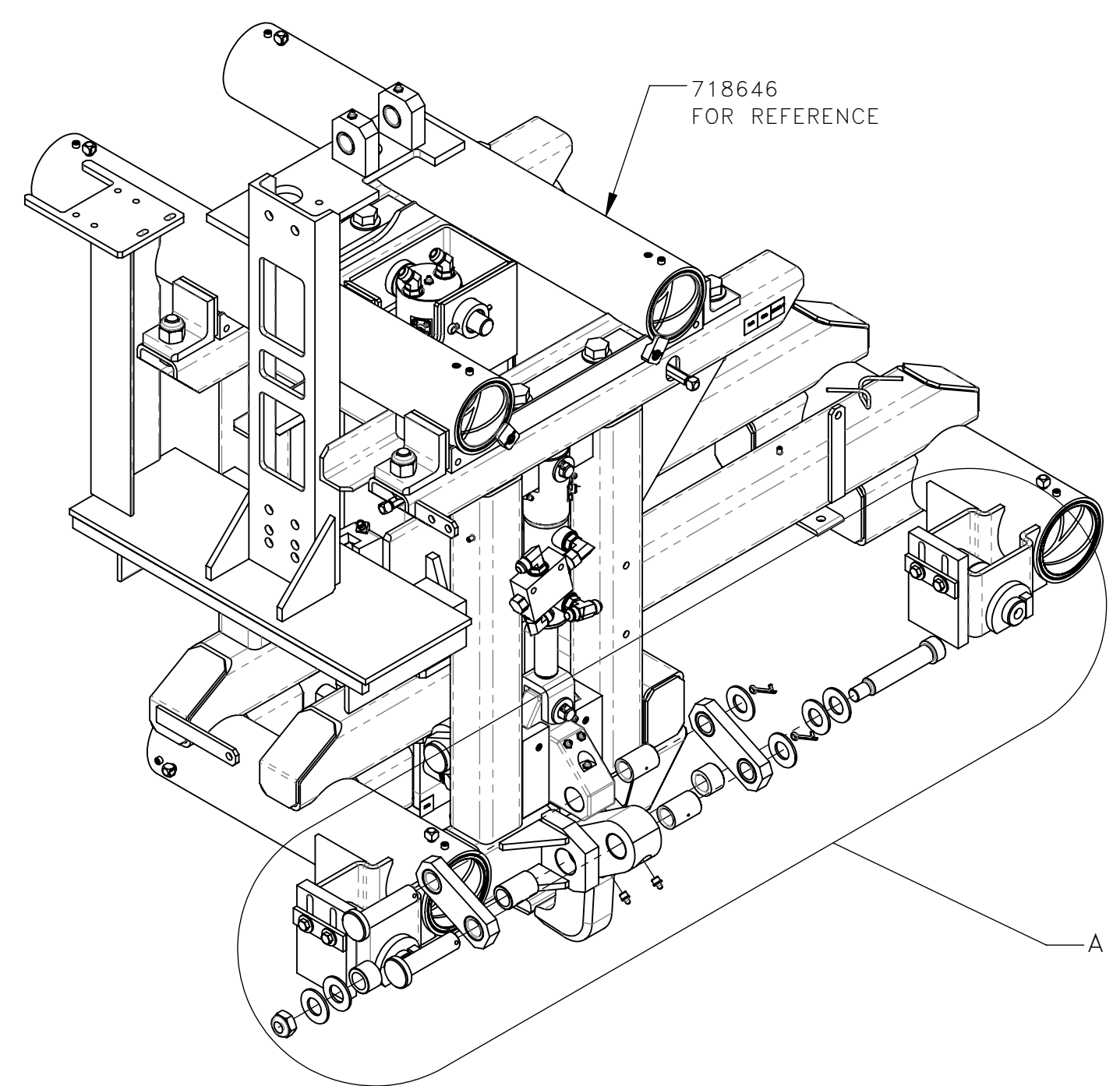
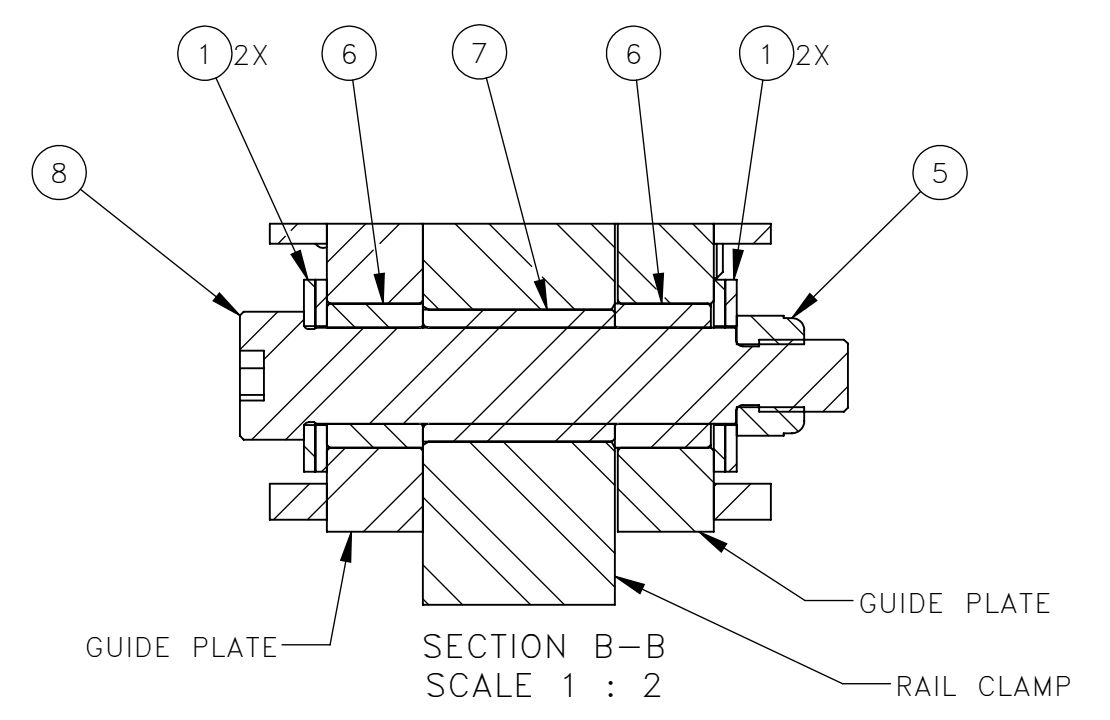
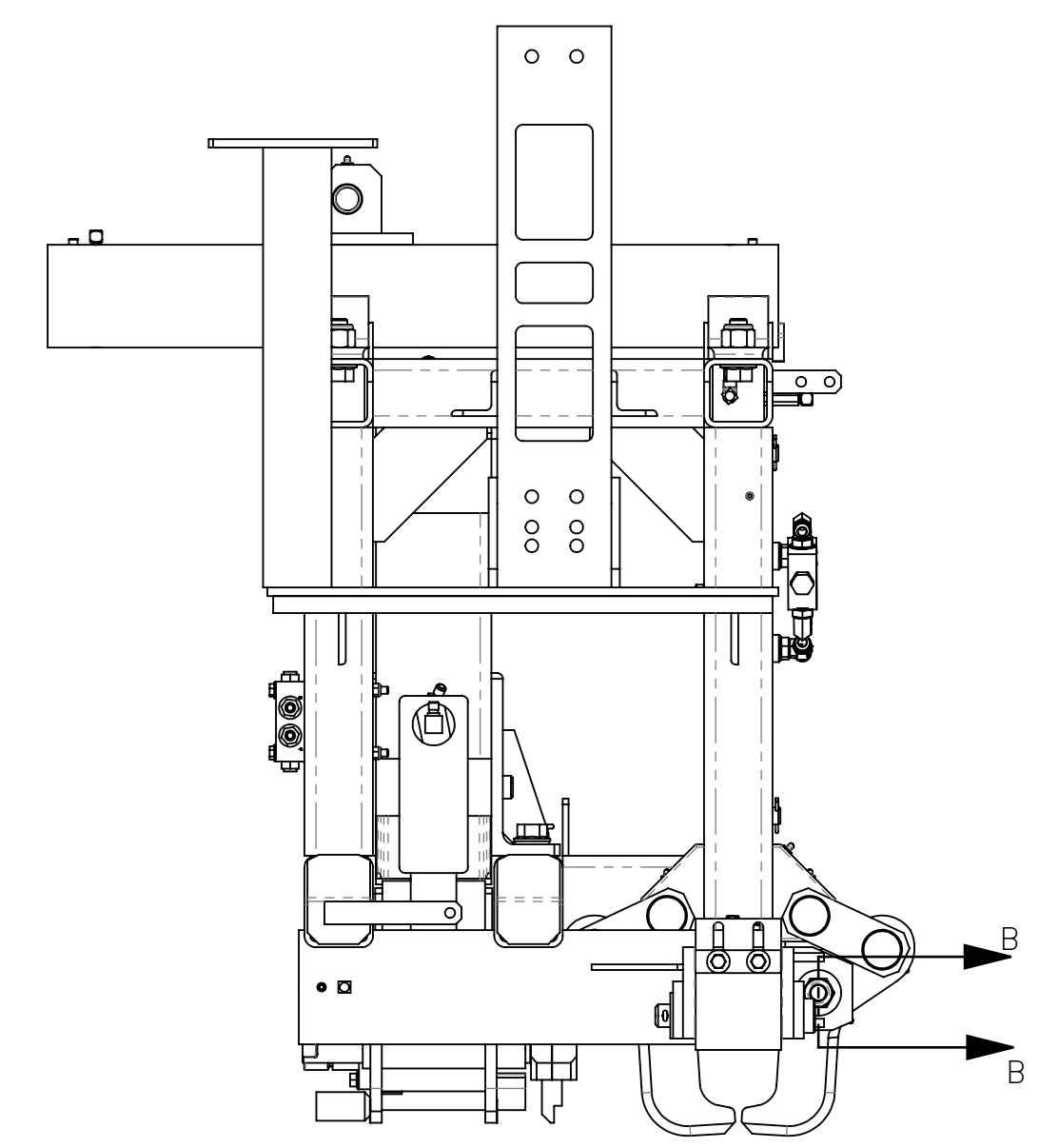


NO.	QTY	DESCRIPTION	PART NO.
1	REF	WASHER, FLT: 1	380025
2	REF	PIN, CLEVIS: 1 X 4.44	395069
3	REF	PIN, COTTER: .19 X 1.5	400904
4	REF	FITTING, LUBE: .12 NPT(M)	401987
5	REF	NUT, HEX ES JAM: .75-10 HVY THIN	405338
6	REF	BRG, SLV: 1 ID STEEL	466285
7	REF	BRG, SLV: 1 ID STEEL	466286
8	REF	SCR, SOC SHLD: 1 X 4.5	491864
9	REF	LINK	714401

- THESE INSTRUCTIONS ARE FOR KIT 793124
1. PULL CLEVIS PINS (QTY 2) AND REMOVE LINKS (QTY 2) PER SIDE
 2. REMOVE SOCKET HEAD SCREW AND RAIL CLAMP PER SIDE
 3. REMOVE BEARING FROM SLIDE AND REPLACE WITH NEW BEARING (466286) PER SIDE
 4. REMOVE BEARINGS (QTY 2) FROM GUIDE PLATE AND REPLACE WITH NEW BEARINGS (466285, QTY 2) PER SIDE
 5. REMOVE BEARINGS (QTY 2) FROM EACH RAIL CLAMP AND REPLACE WITH NEW BEARINGS (466286, QTY 2)
 6. REMOVE LUBE FITTINGS (QTY 2) FROM EACH RAIL CLAMP AND REPLACE WITH NEW FITTINGS (401987, QTY 2)
 7. REINSTALL RAIL CLAMP WITH NEW SOCKET HEAD SHOULDER SCREW (491864), NEW WASHERS (380025, QTY 4) AND JAM NUT (405338) PER SIDE. SEE SECTION B-B
 8. INSTALL NEW LINKS (714401, QTY 2) WITH NEW CLEVIS PINS (395069, QTY 2), NEW WASHERS (380025, QTY 2), AND NEW COTTER PINS (400904, QTY 2) PER SIDE
 9. REGREASE ALL NEW BEARINGS



DETAIL A
SCALE 2 : 5



REV	EN	DESCRIPTION	DATE	DRN
1		5907 NEW RELEASE	9-21	ML

DIMENSION TOLERANCES UNLESS OTHERWISE SPECIFIED

LINEAR	.XX=±.03	.XXX=±.010
ANGULAR	X' = ±1'	X.X' = ±.5'

SURFACE FINISH 125/√ SMOOTH ALL SHARP EDGES
NOT TO EXCEED CLEAN ALL WELDS

THIS PRINT AND ALL INFORMATION WITHIN BELONGS TO RACINE RAILROAD PRODUCTS

RACINE RAILROAD PRODUCTS
RACINE, WISCONSIN USA

DESCRIPTION
INSTRUCTIONS, RAIL CLAMP REPAIR KIT

MATERIAL
SEE BOM

USED ON	793124	SCALE	DATE
		1:8	09-16-21

DRN	CHK	APP	JOB NO	SHEET
ML			RD150003	1 OF 1

DWG SIZE	CATALOG	DWG NO
D	N	800361