

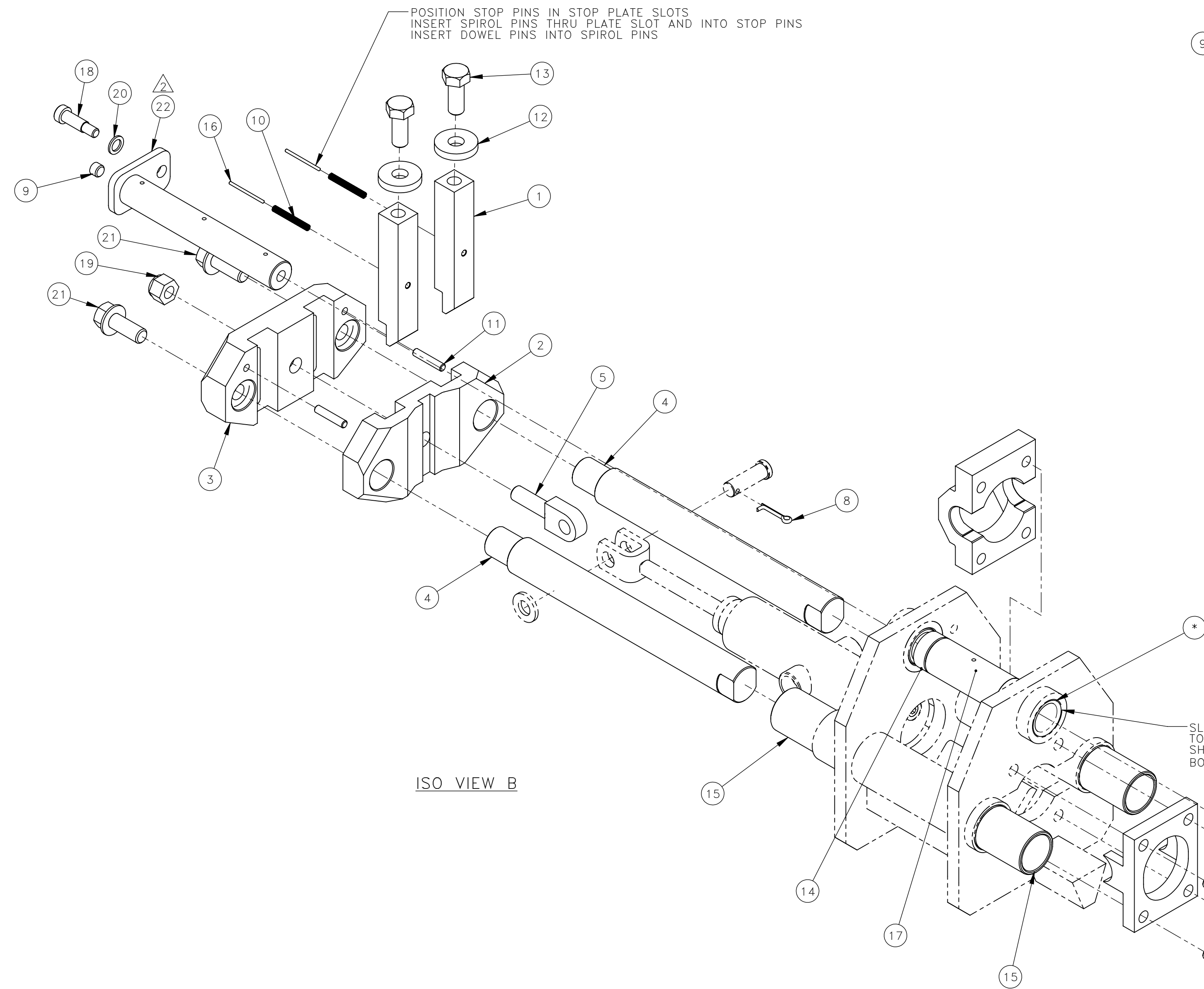
THESE INSTRUCTIONS ARE FOR KIT 793067

**REMOVAL:**

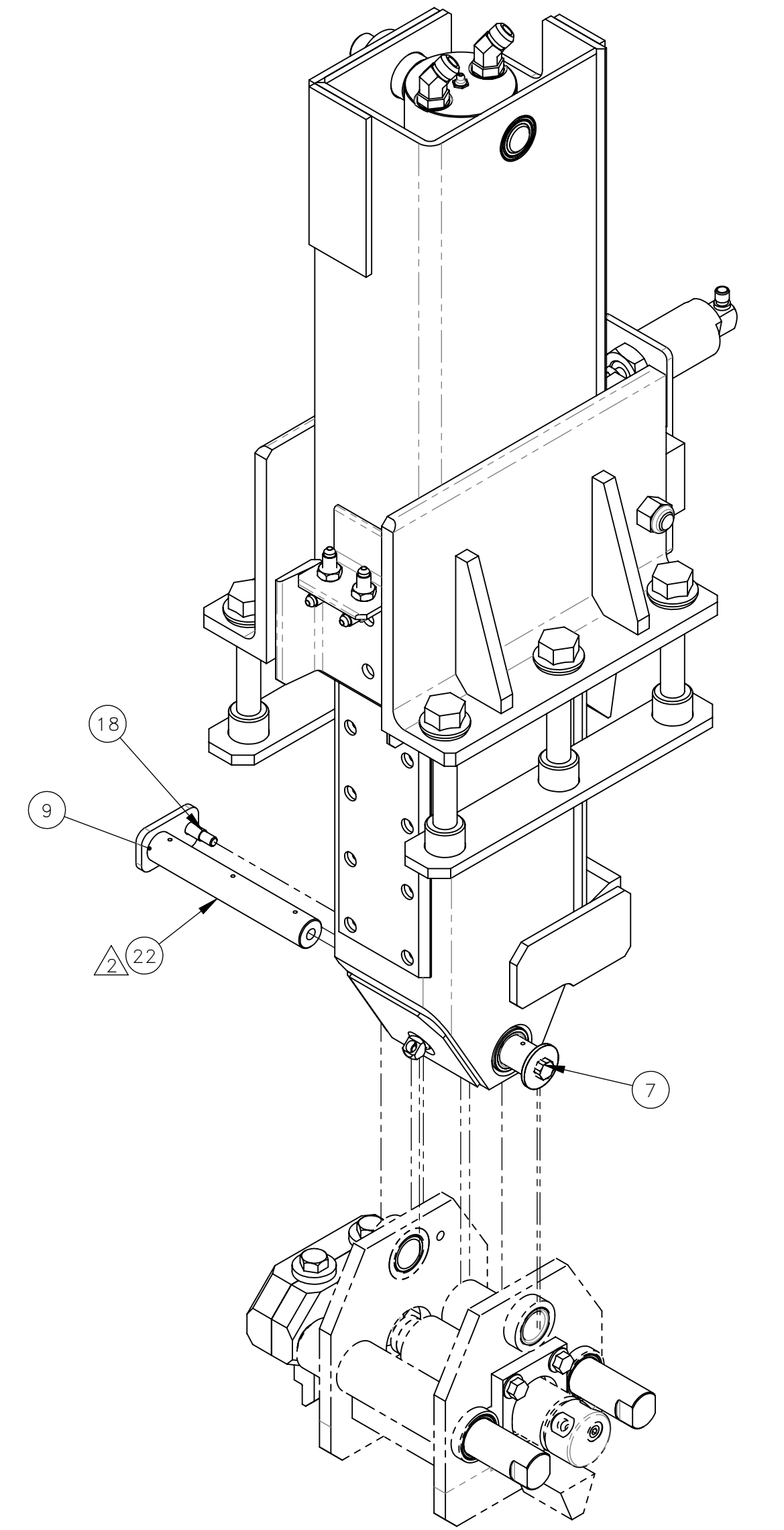
1. POWER OFF MACHINE AND TAG OUT BEFORE PERFORMING CONVERSION
2. DISCONNECT HYD. HOSES FROM CYLINDER
3. REMOVE FIELD JACK FOOT AND KEEP EXISTING FASTENERS (SEE ISO VIEW A).
4. DISASSEMBLE JACK FOOT CLAMP (SEE ISO VIEW A).

**INSTALLATION:**

1. ASSEMBLE JACK FOOT PUSHER (SEE ISO VIEW B).
2. REATTACH FIELD JACK FOOT WITH EXISTING CLEVIS PINS AND COTTER PIN (SEE ISO VIEW A).
3. RECONNECT HYD. HOSES TO CYLINDER.



ISO VIEW B



ISO VIEW A

NO.	QTY	DESCRIPTION	PART NO.
1	REF	PIN, STOP: SQ	315586
2	REF	PLATE, STOP	315604
3	REF	PLATE, STOP	318198
4	REF	SHAFT, GUIDE	318199
5	REF	BOLT, SWING	318200
6	REF	WASHER, FLT: .38	380061
7	REF	SCR, HEX: .38-16 X .62	400733
8	REF	PIN, COTTER: .12 X 1	400900
9	REF	PLUG, .12 NPT(M)	400922
10	REF	PIN, SPIROL: .19 X 1.5	407858
11	REF	PIN, DOWEL: .25 X 1.25	408601
12	REF	WASHER, FLT: .5	454779
13	REF	SCR, HEX: .5-20 X 1.25	461853
14	REF	BRG, SLV: 1 STEEL	465440
15	REF	BRG, SLV: 1.25 ID BRONZE	466223
16	REF	PIN, DOWEL: .09 X 1.5 SS	467654
17	REF	BRG, SLV: 1 ID STEEL	468401
18	REF	SCR, SOC SHLD: .38 X .88	468404
19	REF	NUT, HEX ES: .5-13 LT	490743
20	REF	WASHER, FLT: .38	490959
21	REF	SCR, HEX FLG: .5-13 X 1.25	491046
22	REF	PIN, TEARDROP	779509

REV	EN	DESCRIPTION	DATE	DRN
1	5967	NEW RELEASE	12-21	PR
2	6441	DEL 598427(REF) 399430(REF) ADD 779509(REF)	10-22	ASM

DIMENSION TOLERANCES UNLESS OTHERWISE SPECIFIED

LINEAR	.XX=±.03	.XXX=±.010
ANGULAR	X°=±1°	X.X°=±.5°

SURFACE FINISH NOT TO EXCEED 125 ✓ SMOOTH ALL SHARP EDGES CLEAN ALL WELDS

THIS PRINT AND ALL INFORMATION WITHIN BELONGS TO RACINE RAILROAD PRODUCTS

**RACINE RAILROAD PRODUCTS**  
RACINE, WISCONSIN USA

DESCRIPTION  
INSTRUCTIONS, JACK FOOT SQ STOP PIN REBUILD KIT

MATERIAL  
SEE BOM

USED ON	793067	SCALE	1:2.5	DATE	12-15-15
DRN	PR	CHK	APP	JOB NO	RD150003
DWG SIZE	D	CATALOG	N	DWG NO	800364

1 OF 1 SHEET