

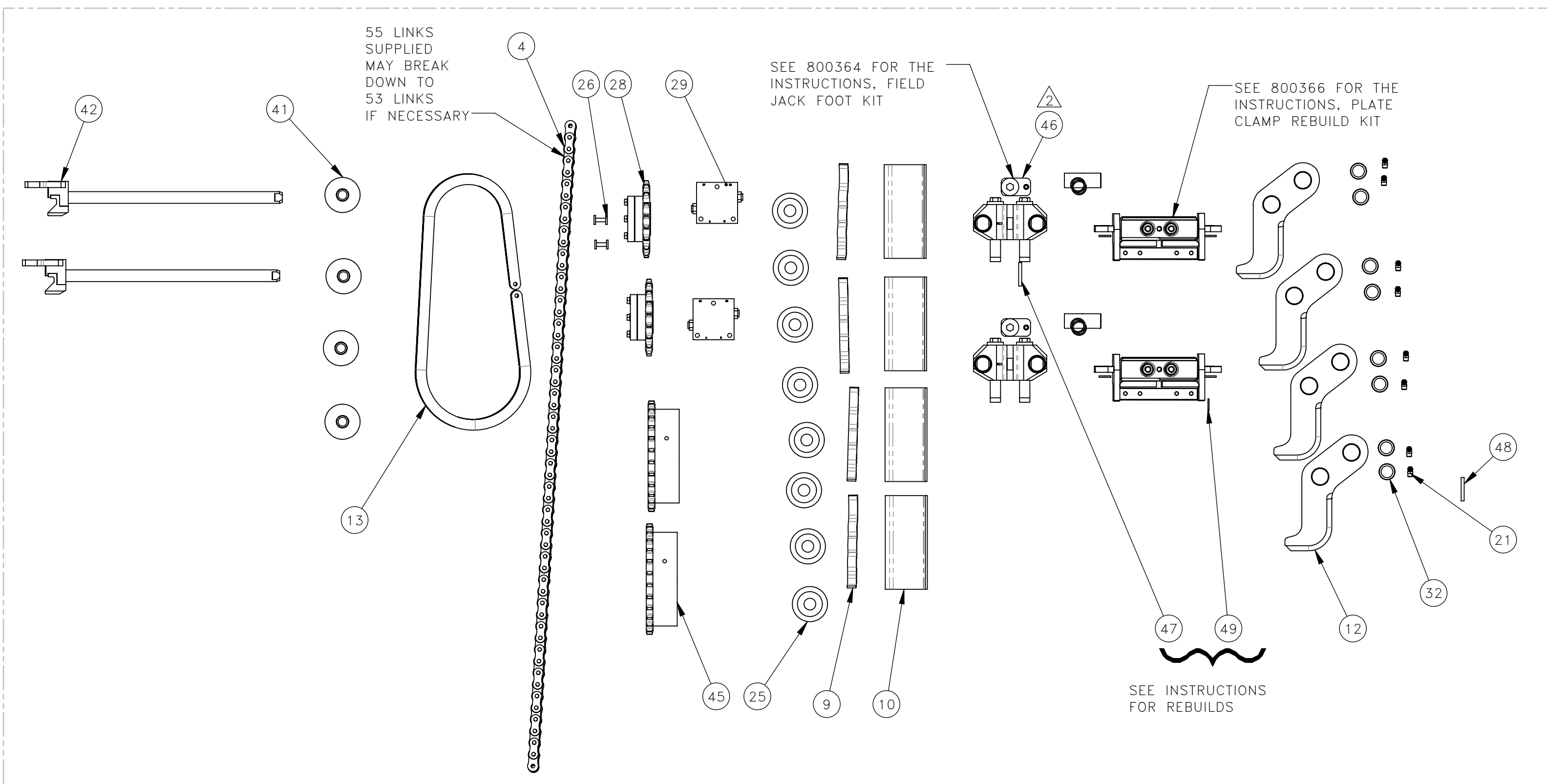
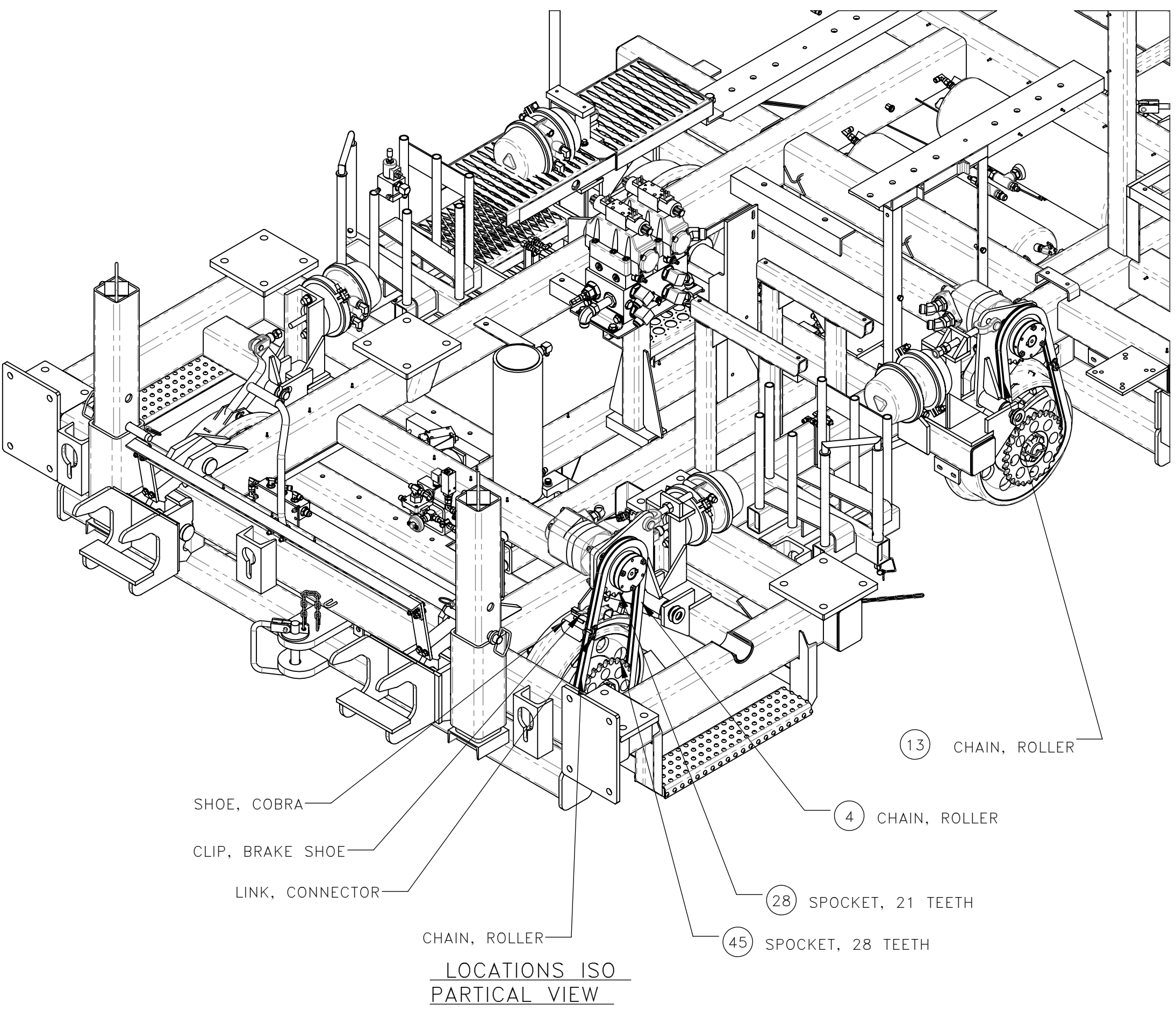
THESE INSTRUCTIONS ARE FOR KIT 793068

1. POWER OFF MACHINE AND TAG OUT BEFORE PERFORMING CONVERSION.
2. KEEP ALL EXISTING FASTENERS FOR EACH REPAIR ITEMS.
3. DISCONNECT & LABEL CYLINDER HOSES ON BOTH JACK FOOT AND PLATE CLAMP.
4. SEE ISO VIEWS FOR ASSISTANCE ON LOCATIONS.

INSTALLATION:

1. REPLACE PARTS IN BOM (SEE PARTS VIEW).
2. REASSEMBLE BOTH PLATE CLAMP REBUILD ASSEMBLIES (PER 800366).
3. REASSEMBLE BOTH FIELD JACK FOOT ASSEMBLIES (PER 800371).
4. REATTACH CYLINDER HOSES ON BOTH JACK FOOT AND PLATE CLAMP.

NO.	QTY	DESCRIPTION	PART NO.
1	REF	PLATE, LUBE	311610
2	REF	PIN, STOP: SQ	315586
3	REF	PLATE, STOP	315604
4	REF	CHAIN, ROLLER: #80 X 55	317883
5	REF	PLATE, STOP	318198
6	REF	SHAFT, GUIDE	318199
7	REF	BOLT, SWING	318200
8	REF	WASHER, FLT: .38	380061
9	REF	CLIP, BRAKE SHOE	386601
10	REF	SHOE, COBRA	387010
11	REF	PLATE, PUSH	394816
12	REF	CLAMP, RAIL	395109
13	REF	CHAIN, ROLLER: #80 X 49	398974
14	REF	SCR, HEX: .38-16 X .62	400733
15	REF	SCR, HEX: .5-13 X 2.75	400753
16	REF	PIN, COTTER: .12 X 1	400900
17	REF	PLUG, .12 NPT(M)	400922
18	REF	NUT, HEX ES JAM: .5-13 HVY	403900
19	REF	PIN, SPIROL: .19 X 1.5	407858
20	REF	PIN, DOWEL: .25 X 1.25	408601
21	REF	FITTING, LUBE: .12 NPT(M) 90°	451214
22	REF	WASHER, FLT: .5	454779
23	REF	WASHER, FLT: .5	454817
24	REF	SCR, HEX: .5-20 X 1.25	461853
25	REF	BRG, CAM FOLLOWER: 3 DIA	462749
26	REF	LINK, CONNECTING: #80	464742
27	REF	BRG, SLV: 1 STEEL	465440
28	REF	SPROCKET, #80 19 TOOTH	465878
29	REF	VALVE, CHECK: P.O. DUAL	466197
30	REF	BRG, SLV: 1 ID STEEL	466217
31	REF	BRG, SLV: 1.25 ID BRONZE	466223
32	REF	BRG, SLV: 1 ID STEEL	466286
33	REF	PIN, DOWEL: .09 X 1.5 SS	467654
34	REF	BRG, SLV: 1 ID STEEL	468401
35	REF	SCR, SOC SHLD: .38 X .88	468404
36	REF	BRG, SLV: .5 ID STEEL	469891
37	REF	NUT, HEX ES: .5-13 LT	490743
38	REF	WASHER, FLT: .38	490959
39	REF	SCR, HEX FLG: .5-13 X 1.25	491046
40	REF	SCR, HEX FLG: .38-16 X 1	491187
41	REF	ROLLER, GUIDE	715184
42	REF	PUSHER	717651
43	REF	CLAMP, GAUGE	778438
44	REF	CLAMP, FIELD	778452
45	REF	SPROCKET, #80 28 TOOTH	778723
46	REF	PIN, TEARDROP	779509
47	REF	INSTRUCTIONS, JACK FOOT SQ STOP PIN REBUILD KIT	800364
49	REF	INSTRUCTIONS, PLATE CLAMP REBUILD KIT	800366



REV	EN	DESCRIPTION	DATE	DRN
1	5967	NEW RELEASE	10-21	PR
2	6441	DEL 598427(REF) 599430(REF) ADD 779509(REF)	10-22	ASM

DIMENSION TOLERANCES UNLESS OTHERWISE SPECIFIED

LINEAR	.XX=±.03	.XXX=±.010
ANGULAR	X°=±1°	X.X°=±.5°

SURFACE FINISH 125 ✓ SMOOTH ALL SHARP EDGES NOT TO EXCEED CLEAN ALL WELDS

THIS PRINT AND ALL INFORMATION WITHIN BELONGS TO RACINE RAILROAD PRODUCTS

RACINE RAILROAD PRODUCTS
RACINE, WISCONSIN USA

DESCRIPTION
INSTRUCTIONS, ATPI WINTER BUILD

MATERIAL
SEE BOM

USED ON	793068	SCALE	DATE
		1:1	10-07-19

DRN	PR	CHK	APP	JOB NO	SHEET
				RD150003	1 OF 1

DWG SIZE	CATALOG	DWG NO
D	N	800365