

THESE INSTRUCTIONS ARE FOR KIT 793060 (2 KITS PER WORKHEAD)

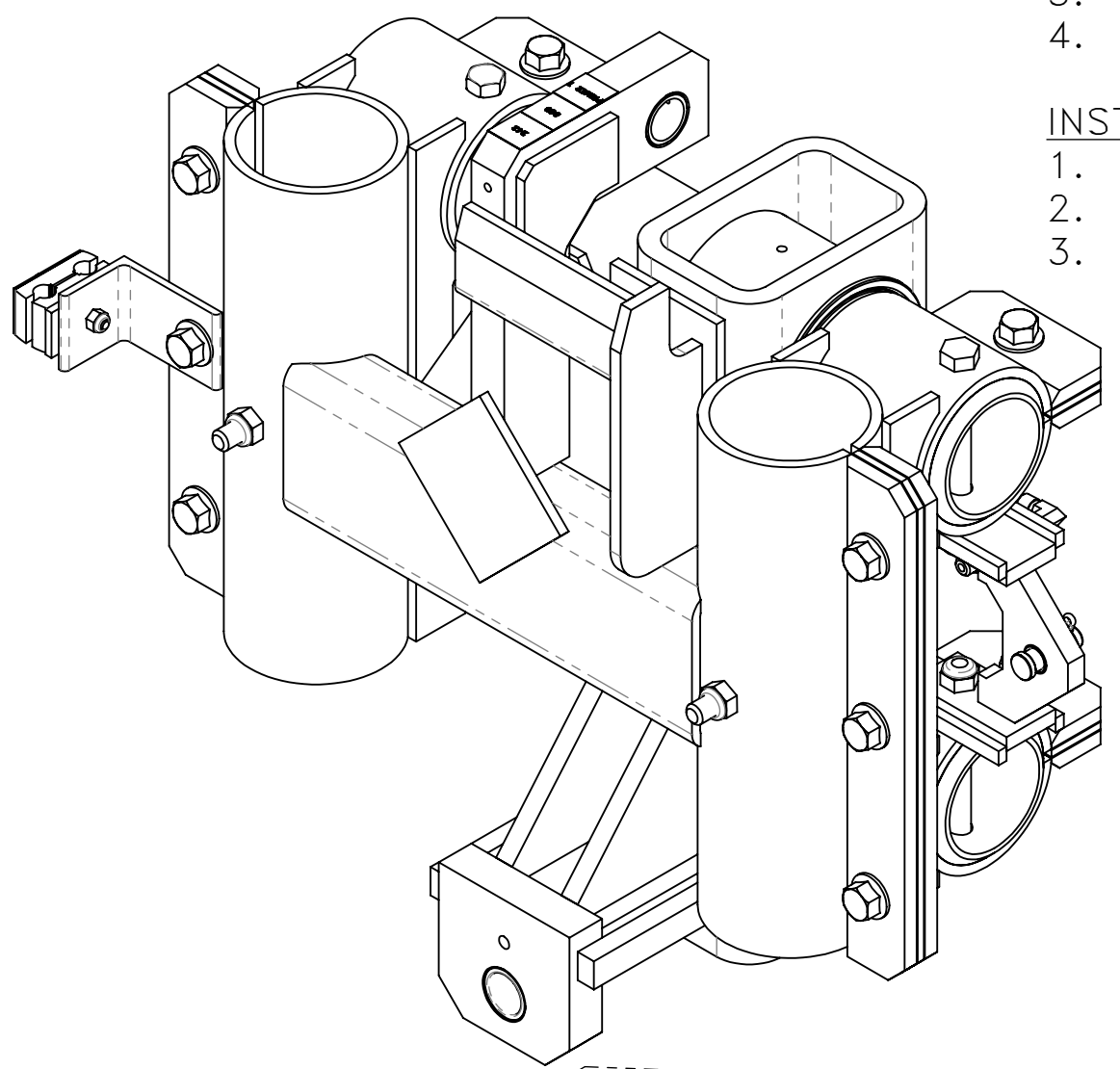
**REMOVAL:**

1. POWER OFF MACHINE AND TAG OUT BEFORE PERFORMING CONVERSION
2. REMOVE HYDRALIC HOSES LABEL IF NECESSARY.
3. REMOVE CLAMP PLATE AND KEEP EXISTING FASTENERS (SEE EXPLODED ISO VIEW A).
4. DISASSEMBLE CLAMP PLATE (SEE CEXPLODED ISO VIEW B).

**INSTALLATION:**

1. REASSEMBLE PER EXPLODED ISO VIEW B.
2. REATTACH TO GUIDE MECHAISM PER EXPLODED ISO VIEW A.
3. REATTECH HOSES TO CYLINDER.

NO.	QTY	DESCRIPTION	PART NO.
1	REF	SCR, SOC FLT: .5-13 X 3	311261
2	REF	PLATE, LUBE	311610
3	REF	PLATE, PUSH	394816
4	REF	SCR, HEX: .5-13 X 2.75	400753
5	REF	PIN, COTTER: .12 X 1	400900
6	REF	FITTING, LUBE: .12 NPT(M)	401987
7	REF	NUT, HEX ES JAM: .5-13 HVY	403900
8	REF	WASHER, FLT: .5	454817
9	REF	BRG, SLV: .5 ID STEEL	469891
10	REF	SCR, HEX FLG: .38-16 X 1	491187
11	REF	CLAMP, GAUGE	778438
12	REF	CLAMP, FIELD	778452



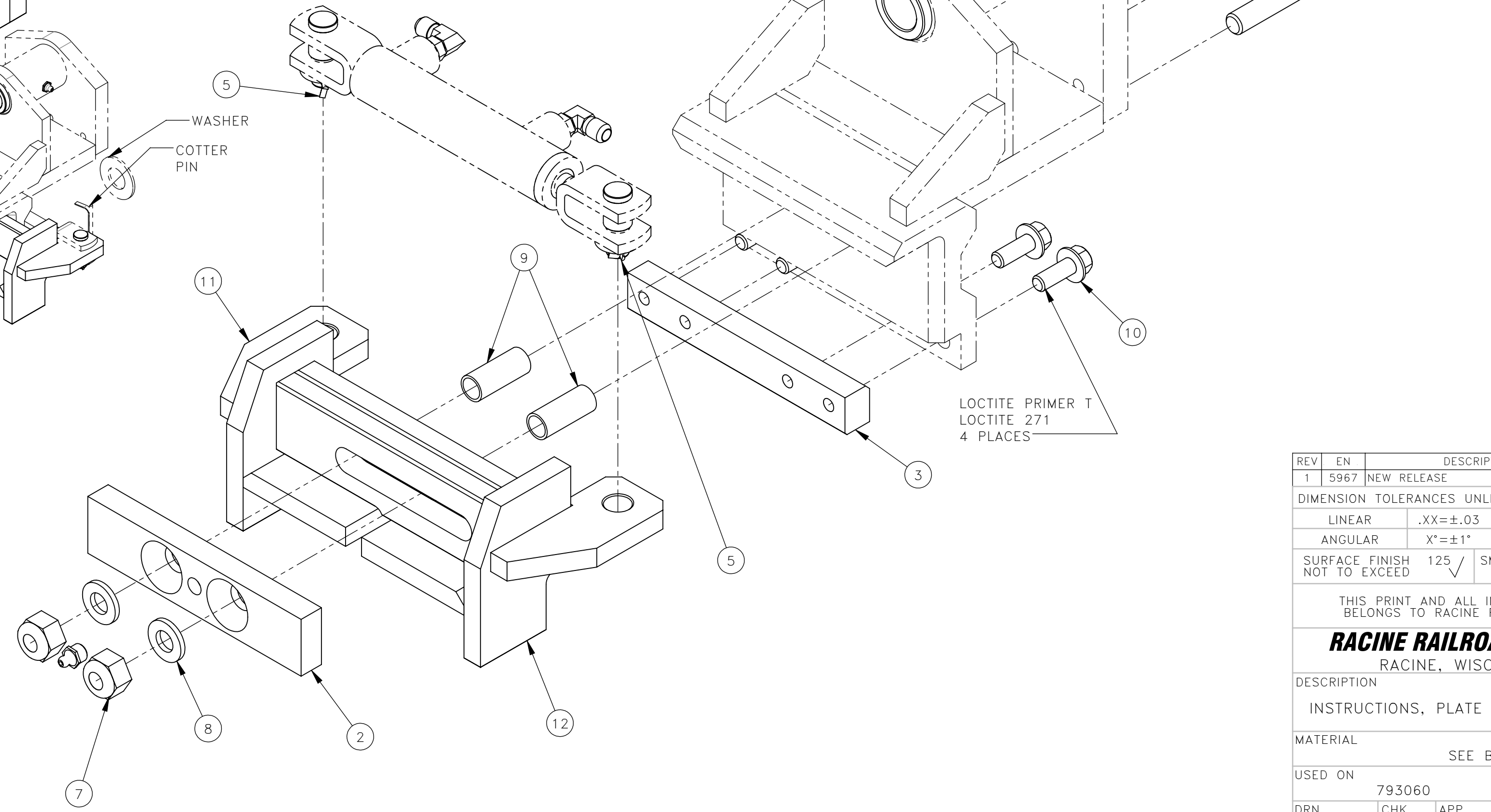
CLEVIS PIN

WASHER  
COTTER PIN

PHATHOM PARTS  
NOT INCLUDED  
WITH THIS KIT

USE EITHER ONE ACCORDING TO  
WHETHER A C'SINK OR A SLOTTED  
HOLE IS PRESENT

LOCTITE PRIMER T  
LOCTITE 271  
4 PLACES



REV	EN	DESCRIPTION	DATE	DRN
1	5967	NEW RELEASE	10-21	PR

DIMENSION TOLERANCES UNLESS OTHERWISE SPECIFIED

LINEAR	.XX=±.03	.XXX=±.010
ANGULAR	X°=±1°	X.X°=±.5°

SURFACE FINISH 125 ✓ SMOOTH ALL SHARP EDGES  
NOT TO EXCEED CLEAN ALL WELDS

THIS PRINT AND ALL INFORMATION WITHIN  
BELONGS TO RACINE RAILROAD PRODUCTS

**RACINE RAILROAD PRODUCTS**  
RACINE, WISCONSIN USA

DESCRIPTION  
INSTRUCTIONS, PLATE CLAMP REBUILD KIT

MATERIAL  
SEE BOM

USED ON	793060	SCALE	1:2	DATE	10-20-21
DRN	PR	CHK	APP	JOB NO	RD150003
DWG SIZE	C	CATALOG	A	DWG NO	800366

SHEET 1 OF 1