

NO.	QTY	DESCRIPTION	PART NO.
1	REF	PLATE, HOPPER SLOPE	322797
2	REF	EYEBOLT, 2400 LB CAP	457010
3	REF	NUT, HEX JAM: .5-13	491298

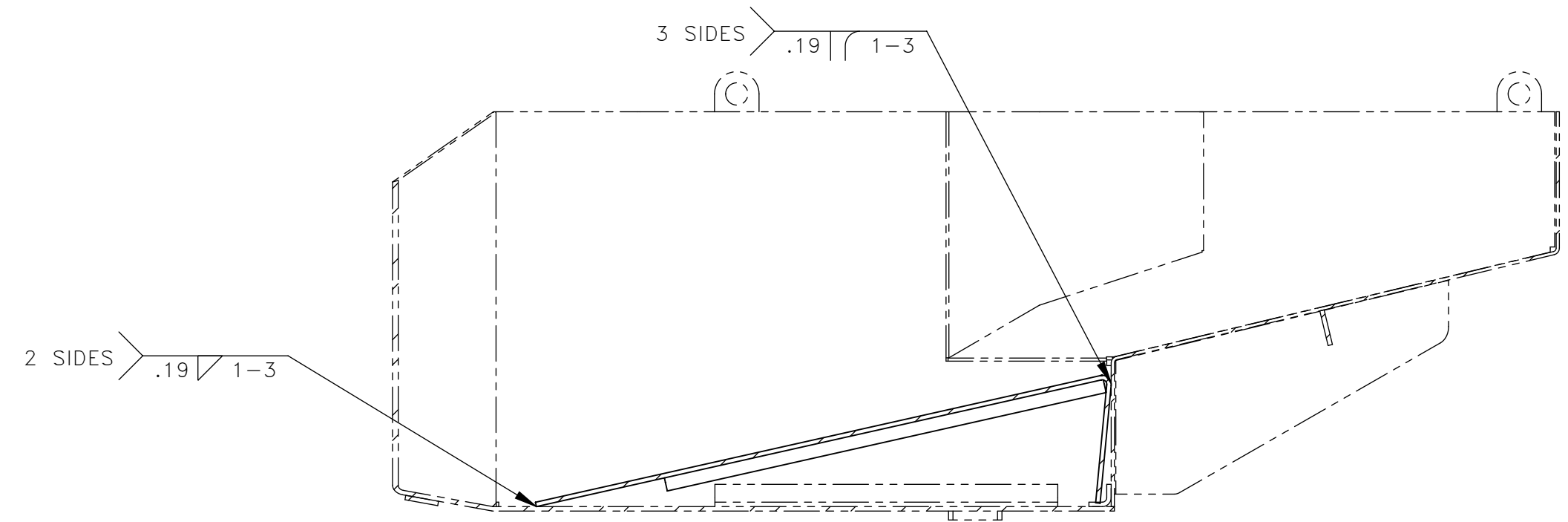
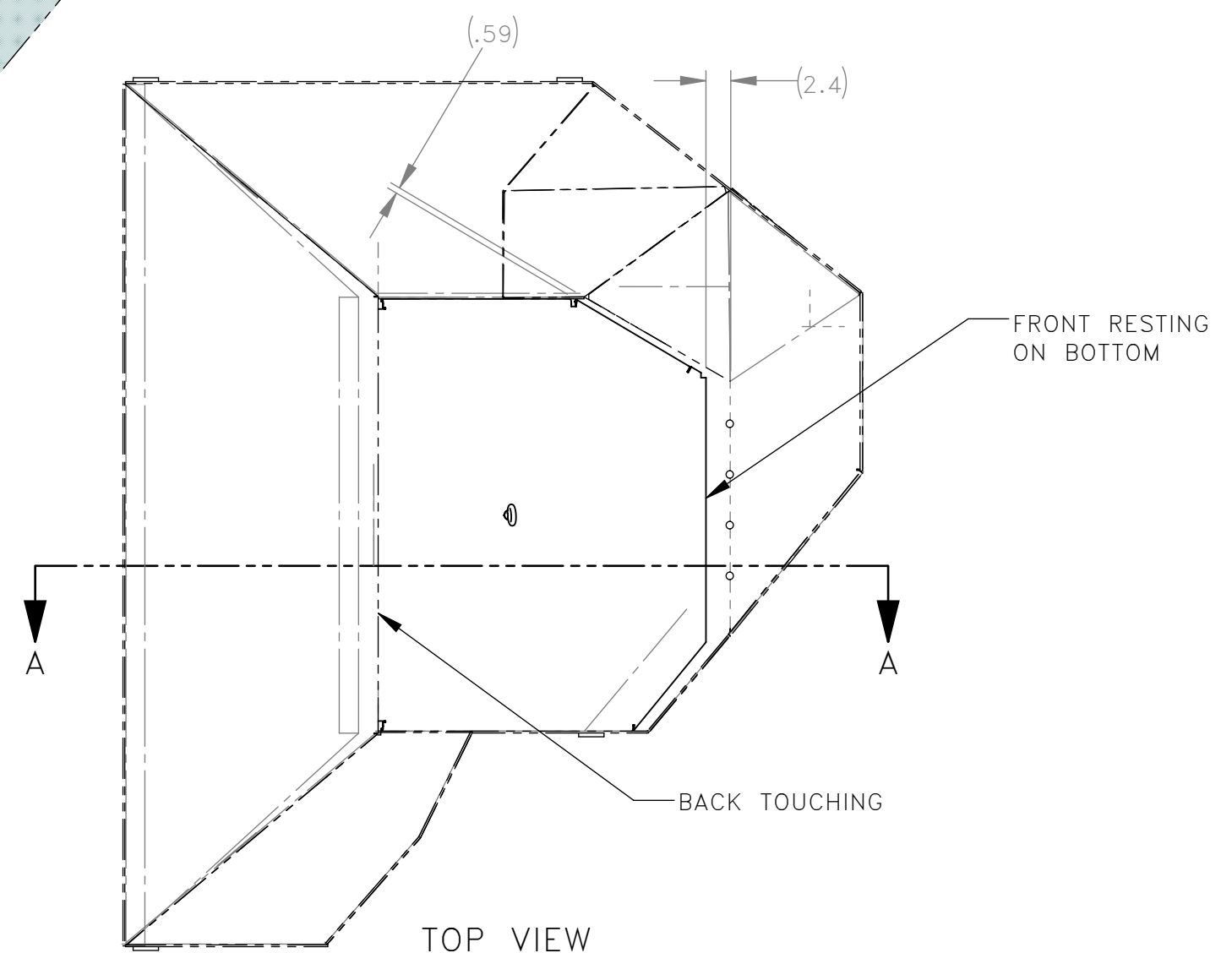
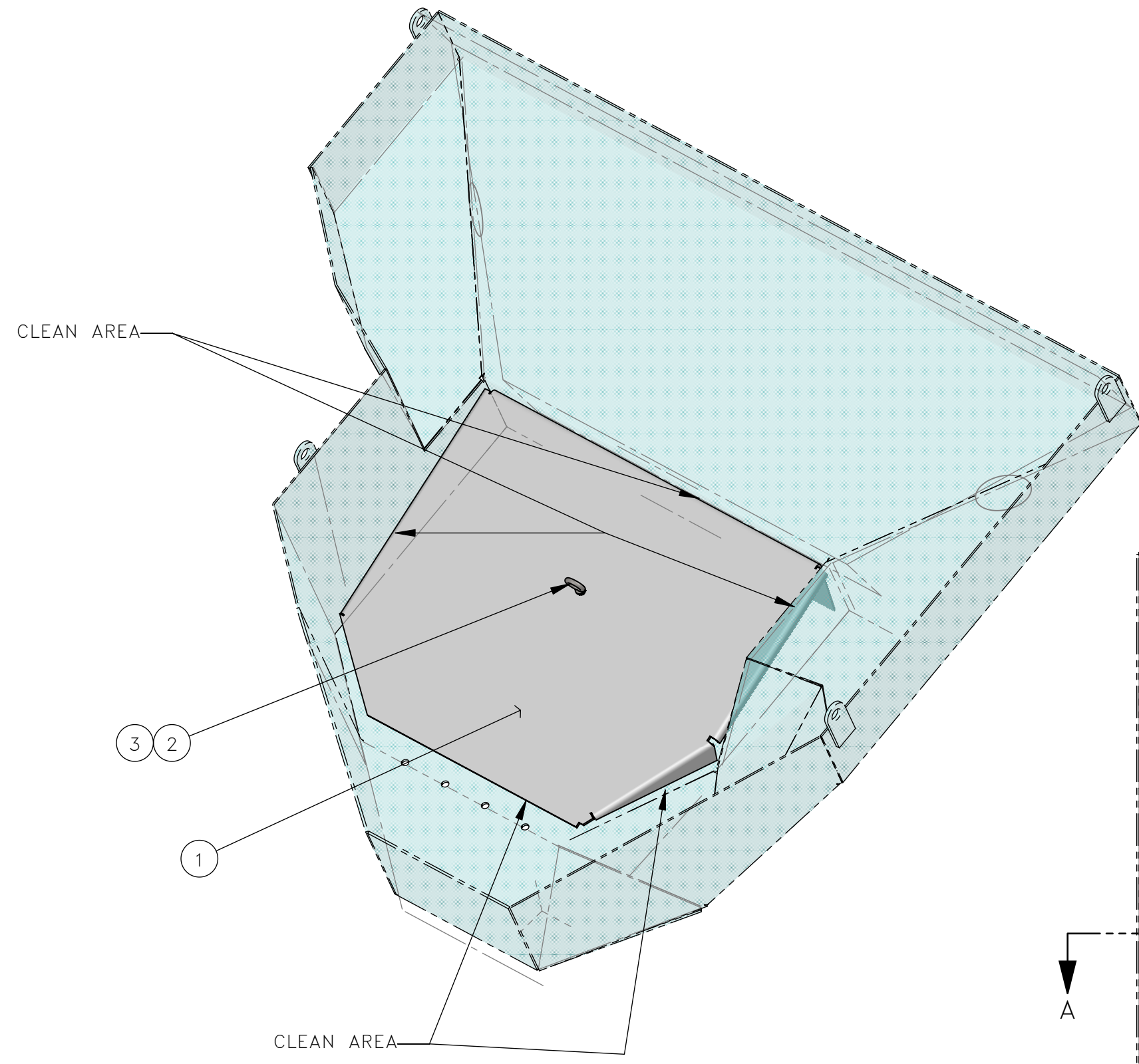
THESE INSTRUCTIONS ARE FOR KIT 793129

REMOVAL:

1. POWER OFF MACHINE AND TAG OUT BEFORE PERFORMING CONVERSION
2. REMOVE ALL ANCHORS FROM HOPPER.
3. CLEAN INDICATED AREAS FOR WELDING (SEE ISO VIEW).

INSTALLATION:

1. INSTALL SLOPE PLATE USING EYEBOLT INTO HOPPER (SEE TOP VIEW).
2. WELD AS SHOWN (SEE SECTION A-A).
3. REMOVE LIFTING EYEBOLT (SEE ISO VIEW).



REV	EN	DESCRIPTION	DATE	DRN
1	6003	NEW RELEASE	11-21	PR

DIMENSION TOLERANCES UNLESS OTHERWISE SPECIFIED

LINEAR	.XX=±.03	.XXX=±.010
ANGULAR	X°=±1°	X.X°=±.5°

SURFACE FINISH 125/ NOT TO EXCEED ✓ SMOOTH ALL SHARP EDGES CLEAN ALL WELDS

THIS PRINT AND ALL INFORMATION WITHIN BELONGS TO RACINE RAILROAD PRODUCTS

RACINE RAILROAD PRODUCTS
RACINE, WISCONSIN USA

DESCRIPTION
INSTRUCTIONS, HOPPER SLOPE KIT

MATERIAL
SEE BOM

USED ON	SCALE	DATE
792844	1:6	11-09-21

DRN	CHK	APP	JOB NO	SHEET
PR			RD150003	1 OF 1

DWG SIZE	CATALOG	DWG NO
C	N	800370

USED ON:
930572
931572
935572
945572