

THESE INSTRUCTIONS ARE FOR KIT 793061

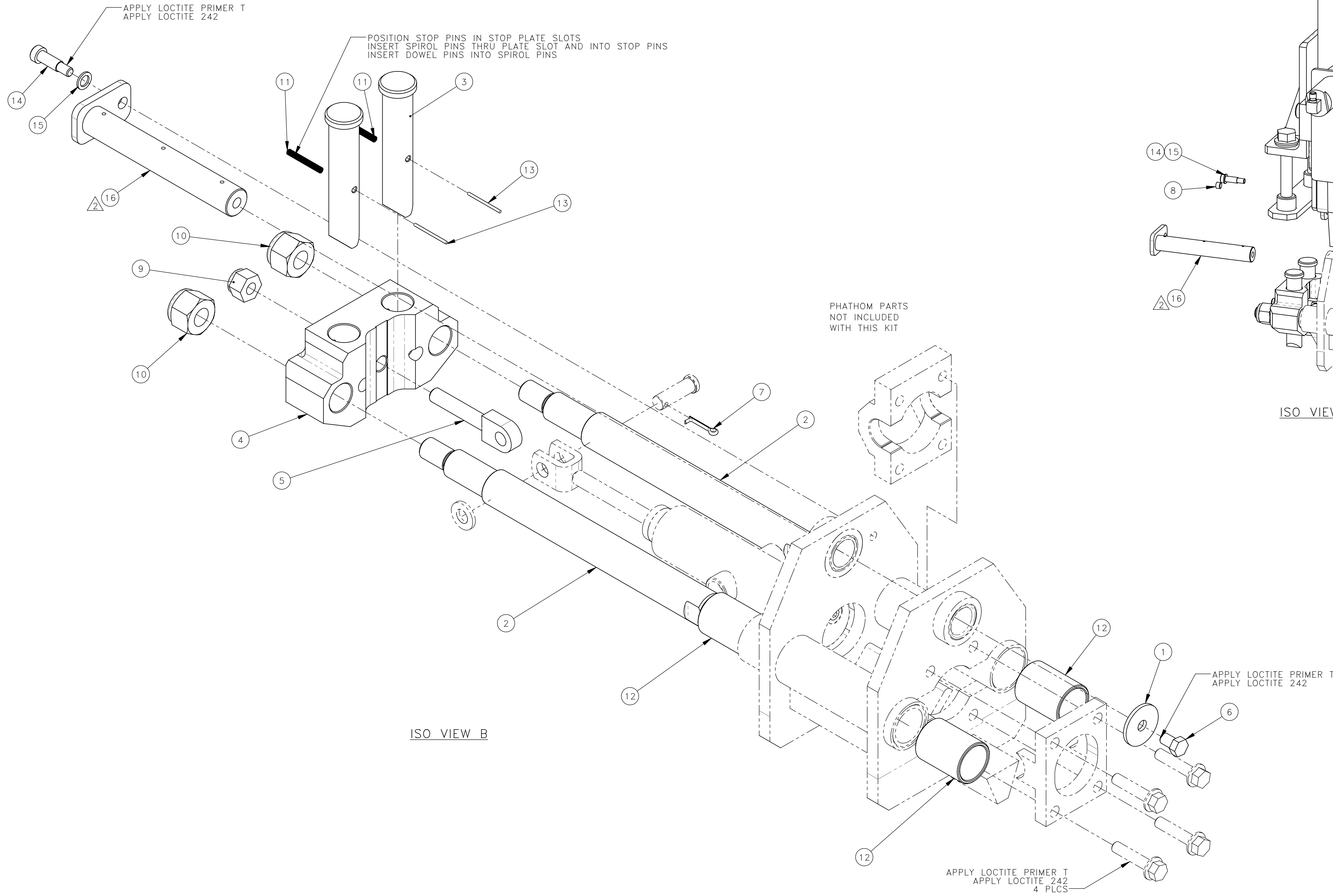
REMOVAL:

1. POWER OFF MACHINE AND TAG OUT BEFORE PERFORMING CONVERSION
2. DISCONNECT HYD. HOSES FROM CYLINDER
3. REMOVE FIELD JACK FOOT AND KEEP EXISTING FASTENERS (SEE ISO VIEW A).
4. DISASSEMBLE JACK FOOT (SEE ISO VIEW A).

INSTALLATION:

1. ASSEMBLE JACK FOOT (SEE ISO VIEW B).
2. REATTACH FIELD JACK FOOT WITH EXISTING CLEVIS PINS AND COTTER PIN (SEE ISO VIEW B).
3. RECONNECT HYD. HOSES TO CYLINDER.

NO.	QTY	DESCRIPTION	PART NO.
1	REF	WASHER, FLT: .38	380061
2	REF	SHAFT, GUIDE	395169
3	REF	PIN, STOP: RD	395170
4	REF	PLATE, STOP	395171
5	REF	BOLT, SWING	395173
6	REF	SCR, HEX: .38-16 X .62	400733
7	REF	PIN, COTTER: .12 X 1	400900
8	REF	PLUG, .12 NPT(M)	400922
9	REF	NUT, HEX ES: .5-13 HVY	404158
10	REF	NUT, HEX ES: .75-10 HVY	407404
11	REF	PIN, SPIROL: .19 X 1.5	407858
12	REF	BRG, SLV: 1.25 ID BRONZE	466223
13	REF	PIN, DOWEL: .09 X 1.5 SS	467654
14	REF	SCR, SOC SHLD: .38 X .88	468404
15	REF	WASHER, FLT: .38	490959
16	REF	PIN, TEARDROP	779509



ISO VIEW A

ISO VIEW B

REV	EN	DESCRIPTION	DATE	DRN
1	5967	NEW RELEASE	10-21	PR
2	6441	DEL 598427(REF) 599430(REF) ADD 779509(REF)	10-22	ASM

DIMENSION TOLERANCES UNLESS OTHERWISE SPECIFIED

LINEAR	.XX=±.03	.XXX=±.010
ANGULAR	X'=±1°	X.X'=±.5°

SURFACE FINISH 125/ NOT TO EXCEED SMOOTH ALL SHARP EDGES CLEAN ALL WELDS

THIS PRINT AND ALL INFORMATION WITHIN BELONGS TO RACINE RAILROAD PRODUCTS

RACINE RAILROAD PRODUCTS
RACINE, WISCONSIN USA

DESCRIPTION
INSTRUCTIONS, JACK FOOT RD STOP PIN REBUILD KIT

MATERIAL
SEE BOM

USED ON	793061	SCALE	DATE
		1:2.5	12-15-21

DRN	PR	CHK	APP	JOB NO	SHEET
				RD150004	1 OF 1

DWG SIZE	CATALOG	DWG NO
D	N	800371