

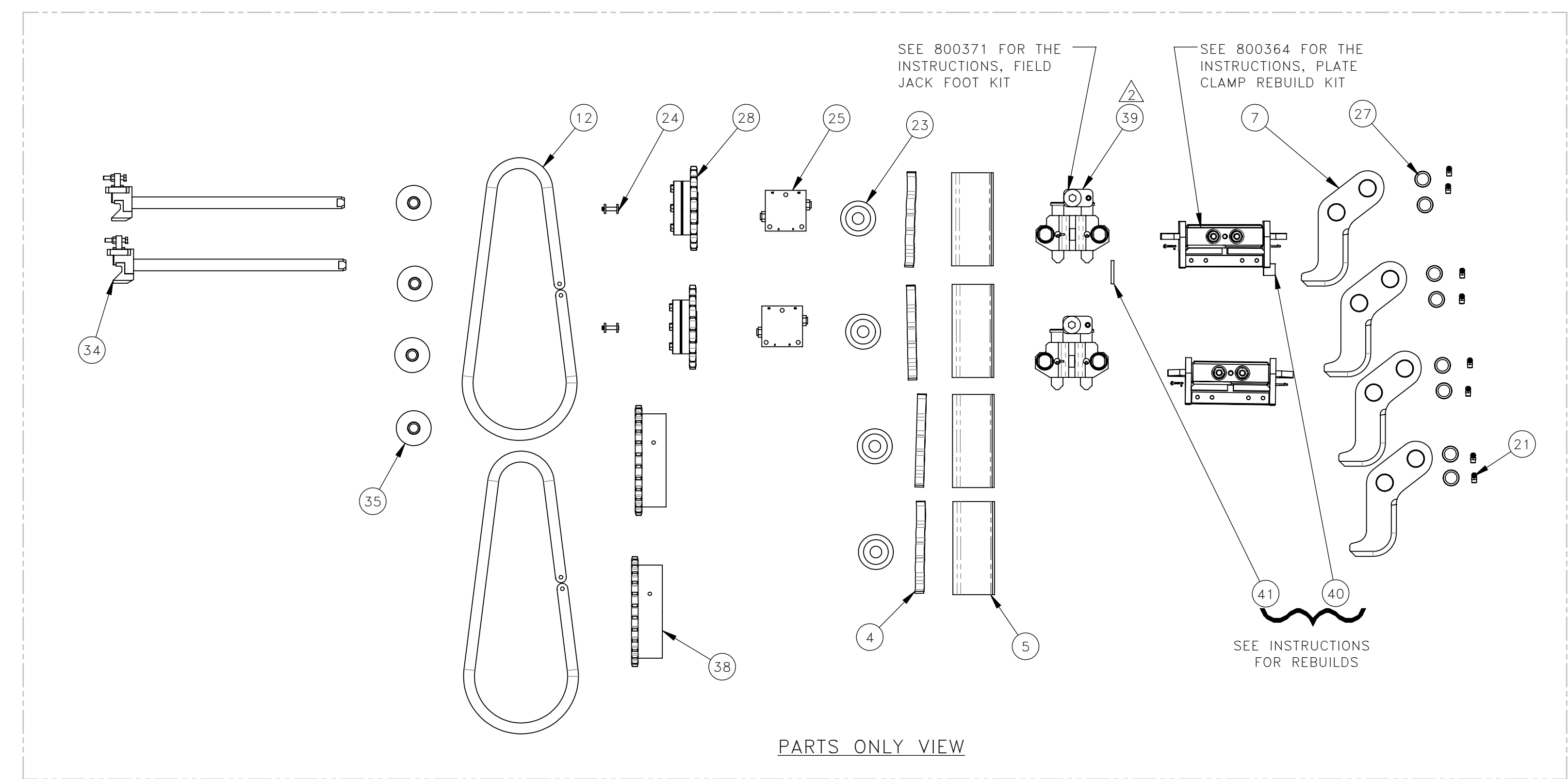
THESE INSTRUCTIONS ARE FOR KIT 793062

1. POWER OFF MACHINE AND TAG OUT BEFORE PERFORMING CONVERSION.
2. KEEP ALL EXISTING FASTENERS FOR EACH REPAIR ITEMS.
3. DISCONNECT & LABEL CYLINDER HOSES ON BOTH JACK FOOT AND PLATE CLAMP.
4. SEE ISO VIEWS FOR ASSISTANCE ON LOCATIONS.

INSTALLATION:

1. REPLACE PARTS IN BOM (SEE PARTS VIEW).
2. REASSEMBLE PLATE CLAMP REBUILD ASSEMBLIES (PER 800366).
3. REASSEMBLE FIELD JACK FOOT ASSEMBLIES (PER 800371).
4. REATTACH CYLINDER HOSES ON BOTH JACK FOOT AND PLATE CLAMP.

NO.	QTY	DESCRIPTION	PART NO.
1	REF	SCR, SOC FLT: .5-13 X 3	311261
2	REF	PLATE, LUBE	311610
3	REF	WASHER, FLT: .38	380061
4	REF	CLIP, BRAKE SHOE	386601
5	REF	SHOE, COBRA	387010
6	REF	PLATE, PUSH	394816
7	REF	CLAMP, RAIL	395109
8	REF	SHAFT, GUIDE	395169
9	REF	PIN, STOP: RD	395170
10	REF	PLATE, STOP	395171
11	REF	BOLT, SWING	395173
12	REF	CHAIN, ROLLER	396247
13	REF	SCR, HEX: .38-16 X .62	400733
14	REF	SCR, HEX: .5-13 X 2.75	400753
15	REF	PIN, COTTER: .12 X 1	400900
16	REF	PLUG, .12 NPT(M)	400922
17	REF	NUT, HEX ES JAM: .5-13 HVY	403900
18	REF	NUT, HEX ES: .5-13 HVY	404158
19	REF	NUT, HEX ES: .75-10 HVY	407404
20	REF	PIN, SPIROL: .19 X 1.5	407858
21	REF	FITTING, LUBE: .12 NPT(M) 90°	451214
22	REF	WASHER, FLT: .5	454817
23	REF	BRG, CAM FOLLOWER: 3 DIA	462749
24	REF	LINK, CONNECTING: #80	464742
25	REF	VALVE, CHECK: P.O. DUAL	466197
26	REF	BRG, SLV: 1.25 ID BRONZE	466223
27	REF	BRG, SLV: 1 ID STEEL	466286
28	REF	SPROCKET, #80 21 TOOTH	466852
29	REF	PIN, DOWEL: .09 X 1.5 SS	467654
30	REF	SCR, SOC SHLD: .38 X .88	468404
31	REF	BRG, SLV: .5 ID STEEL	469891
32	REF	WASHER, FLT: .38	490959
33	REF	SCR, HEX FLG: .38-16 X 1	491187
34	REF	PUSHER	715153
35	REF	ROLLER, GUIDE	715184
36	REF	CLAMP, GAUGE	778438
37	REF	CLAMP, FIELD	778452
38	REF	SPROCKET, #80 28 TOOTH	778723
39	REF	PIN, TEARDROP	779509
40	REF	INSTRUCTIONS, PLATE CLAMP REBUILD KIT	800366
41	REF	INSTRUCTIONS, JACK FOOT RD STOP PIN REBUILD KIT	800371



REV	EN	DESCRIPTION	DATE	DRN
1	5967	NEW RELEASE	12-21	PR
2	6441	DEL 596427(REF) 599430(REF) ADD 779509(REF)	10-22	ASM

DIMENSION TOLERANCES UNLESS OTHERWISE SPECIFIED

LINEAR	.XX=±.03	.XXX=±.010
ANGULAR	X°=±1°	X.X°=±.5°

SURFACE FINISH NOT TO EXCEED 125 ✓ SMOOTH ALL SHARP EDGES CLEAN ALL WELDS

THIS PRINT AND ALL INFORMATION WITHIN BELONGS TO RACINE RAILROAD PRODUCTS

RACINE RAILROAD PRODUCTS
RACINE, WISCONSIN USA

DESCRIPTION
INSTRUCTIONS, TPI WINTER BUILD

MATERIAL
SEE BOM

USED ON	793062	SCALE	DATE
DRN	PR	1:12	12/15/21
CHK	APP	JOB NO	SHEET
		RD150002	1 OF 1
DWG SIZE	CATALOG	DWG NO	
D	N	800372	