

THESE INSTRUCTIONS ARE FOR KIT 793052

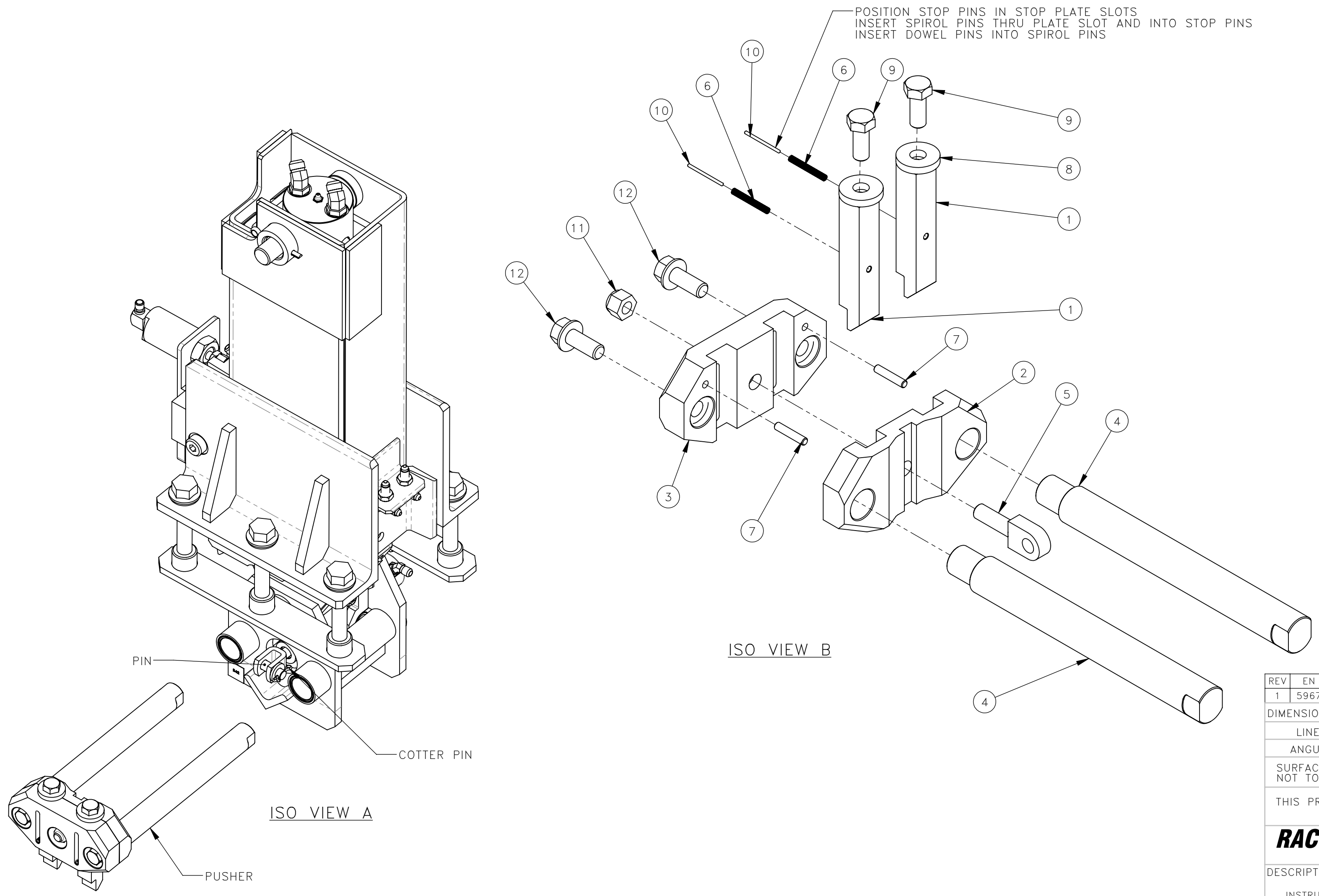
REMOVAL:

1. POWER OFF MACHINE AND TAG OUT BEFORE PERFORMING CONVERSION
2. REMOVE PUSHER ASSEMBLY AND KEEP EXISTING FASTENERS (SEE ISO VIEW A).

INSTALLATION:

1. ASSEMBLE UPGRADED PUSHER (SEE ISO VIEW B).
2. REATTACH JACK FOOT WITH EXISTING CLEVIS PINS AND COTTER PIN (SEE ISO VIEW A).

NO.	QTY	DESCRIPTION	PART NO.
1	REF	PIN, STOP: SQ	315586
2	REF	PLATE, STOP	315604
3	REF	PLATE, STOP	318198
4	REF	SHAFT, GUIDE	318199
5	REF	BOLT, SWING	318200
6	REF	PIN, SPIROL: .19 X 1.5	407858
7	REF	PIN, DOWEL: .25 X 1.25	408601
8	REF	WASHER, FLT: .5	454779
9	REF	SCR, HEX: .5-20 X 1.25	461853
10	REF	PIN, DOWEL: .09 X 1.5 SS	467654
11	REF	NUT, HEX ES: .5-13 LT	490743
12	REF	SCR, HEX FLG: .5-13 X 1.25	491046



REV	EN	DESCRIPTION	DATE	DRN
1	5967	NEW RELEASE	12-21	PR

DIMENSION TOLERANCES UNLESS OTHERWISE SPECIFIED

LINEAR	.XX=±.03	.XXX=±.010
ANGULAR	X°=±1°	X.X°=±.5°

SURFACE FINISH 125/ ✓ SMOOTH ALL SHARP EDGES
NOT TO EXCEED CLEAN ALL WELDS

THIS PRINT AND ALL INFORMATION WITHIN BELONGS TO RACINE RAILROAD PRODUCTS

RACINE RAILROAD PRODUCTS
RACINE, WISCONSIN USA

DESCRIPTION
INSTRUCTIONS, JACK FOOT SQ STOP PIN UPGRADE KIT

MATERIAL
SEE BOM

USED ON	793067	SCALE	DATE
		1:2.5	12-15-21

DRN	CHK	APP	JOB NO	SHEET
PR			RD150003	1 OF 1

DWG SIZE	CATALOG	DWG NO
C	A	800375