

NO.	QTY	DESCRIPTION	PART NO.
1	REF	SHACKLE, ANCHOR: 8.5 TON	466295
2	REF	SLING, CHAIN: 5 X 10' 4-LEG GR100	476218
3	REF	HOOK, WELD ON	476238
4	REF	TAG: LIFTING DEVICE	476258
5	REF	LOCK: PULL TIGHT WIRE ROPE	476259

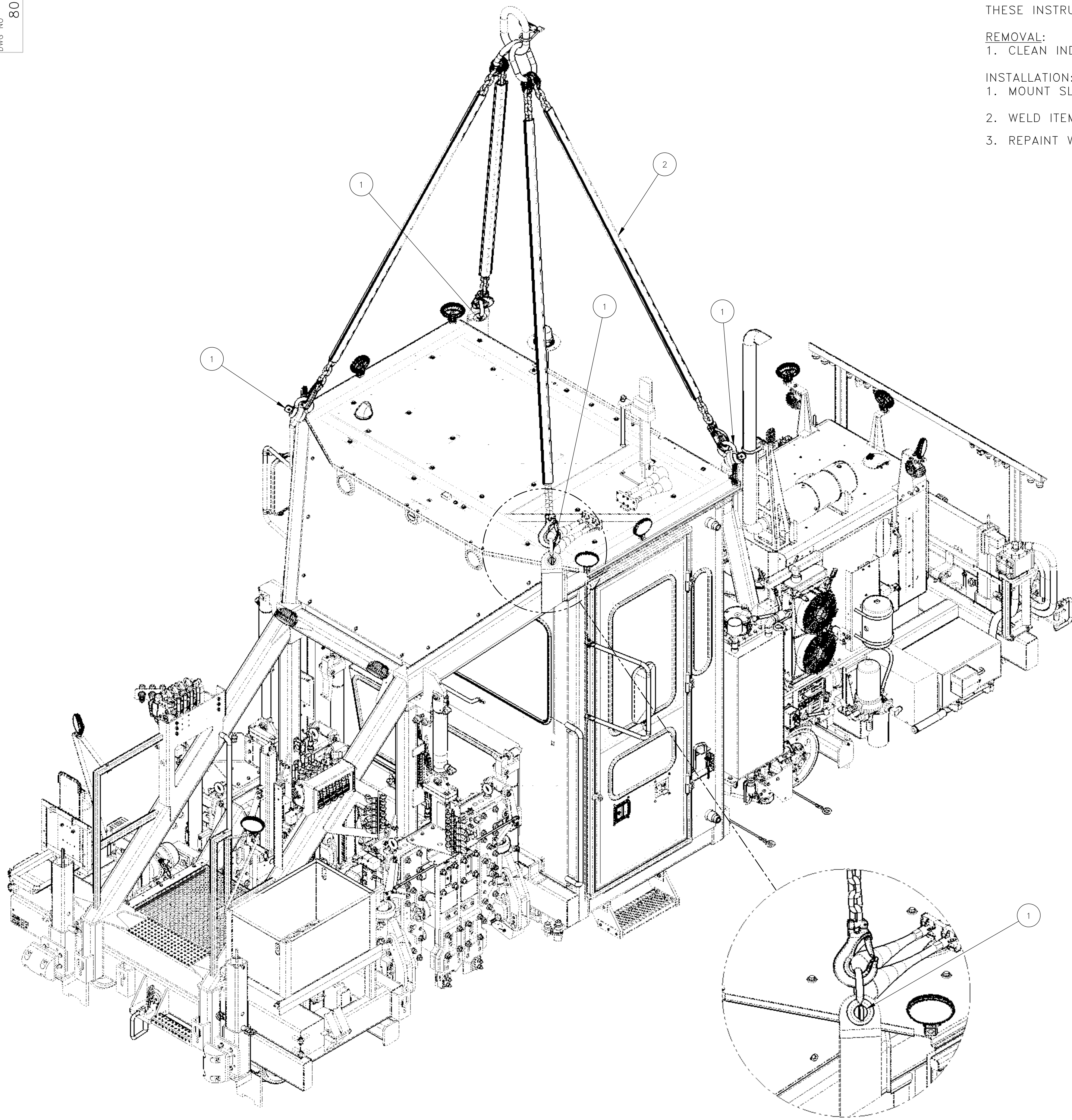
THESE INSTRUCTIONS ARE FOR KIT 793131

REMOVAL:

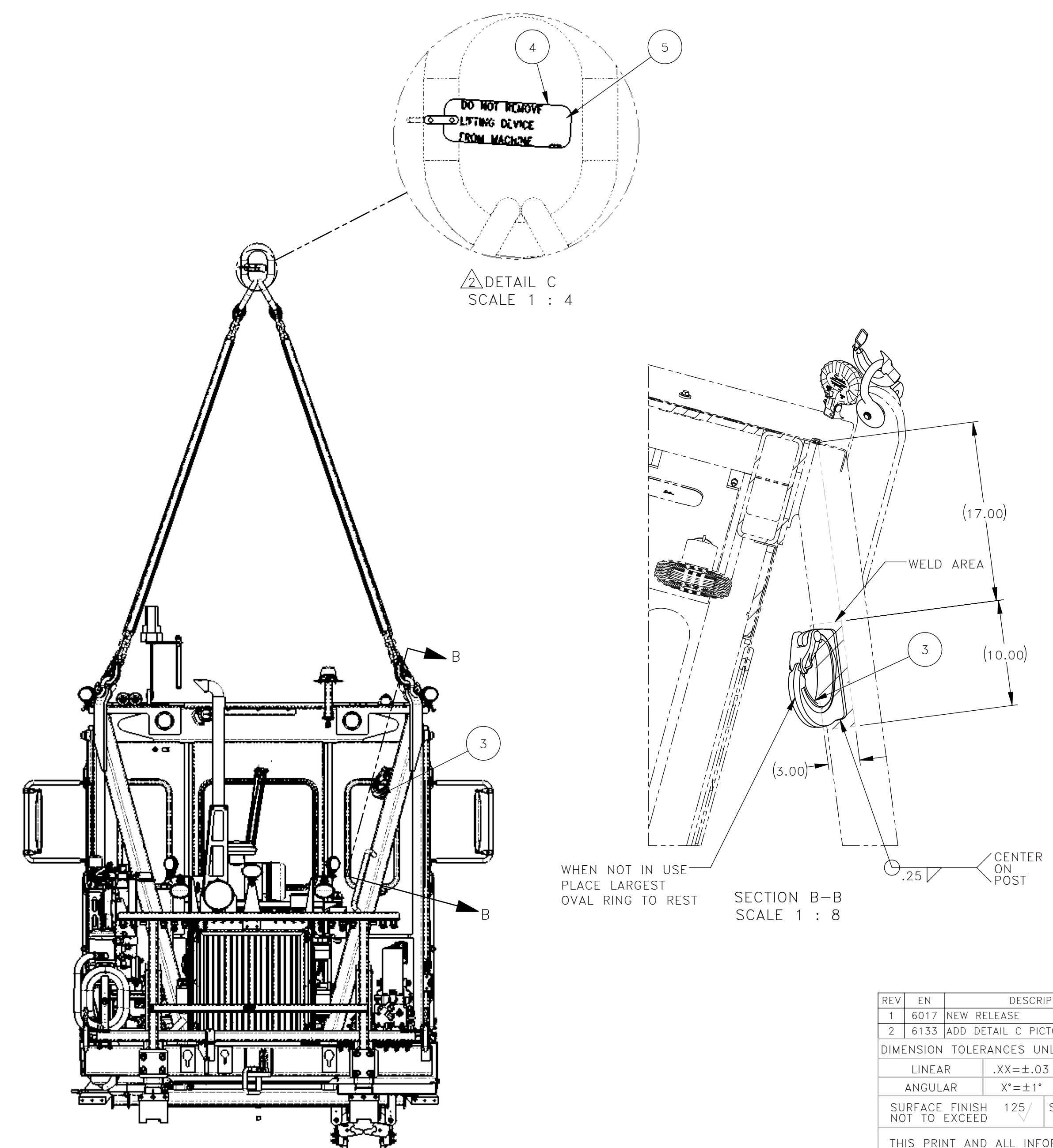
1. CLEAN INDICATED AREA FOR WELDING (SEE SECTION B-B).

INSTALLATION:

1. MOUNT SLING & SHACKLES (SEE DETAIL A-A VIEW).
2. WELD ITEM 3 AS SHOWN (SEE SECTION B-B).
3. REPAINT WELDED AREA.



DETAIL A  
4 PLACES  
SCALE 1 : 7



DETAIL C  
SCALE 1 : 4

SECTION B-B  
SCALE 1 : 8

REV	EN	DESCRIPTION	DATE	DRN
1	6017	NEW RELEASE	12-21	PR
2	6133	ADD DETAIL C PICTORIALLY	02-22	PR

DIMENSION TOLERANCES UNLESS OTHERWISE SPECIFIED			
LINEAR	.XX=±.03	.XXX=±.010	
ANGULAR	X°=±1°	X.X°=±.5°	

SURFACE FINISH 125 SMOOTH ALL SHARP EDGES NOT TO EXCEED CLEAN ALL WELDS

THIS PRINT AND ALL INFORMATION WITHIN BELONGS TO RACINE RAILROAD PRODUCTS

**RACINE RAILROAD PRODUCTS**  
RACINE, WISCONSIN USA

DESCRIPTION  
INSTRUCTIONS, 4-POINT CHAIN SLING KIT

MATERIAL  
SEE BOM

USED ON	SCALE	DATE
793131	1:14	12-17-21

DRN	CHK	APP	JOB NO	SHEET
PR			RD190005	1 OF 1

DWG SIZE	CATALOG	DWG NO
D	A	800377