

| NO. | QTY | DESCRIPTION | PART NO. |
|-----|-----|-----------------|----------|
| 1 | REF | PLATE, SUPPPORT | 323079 |

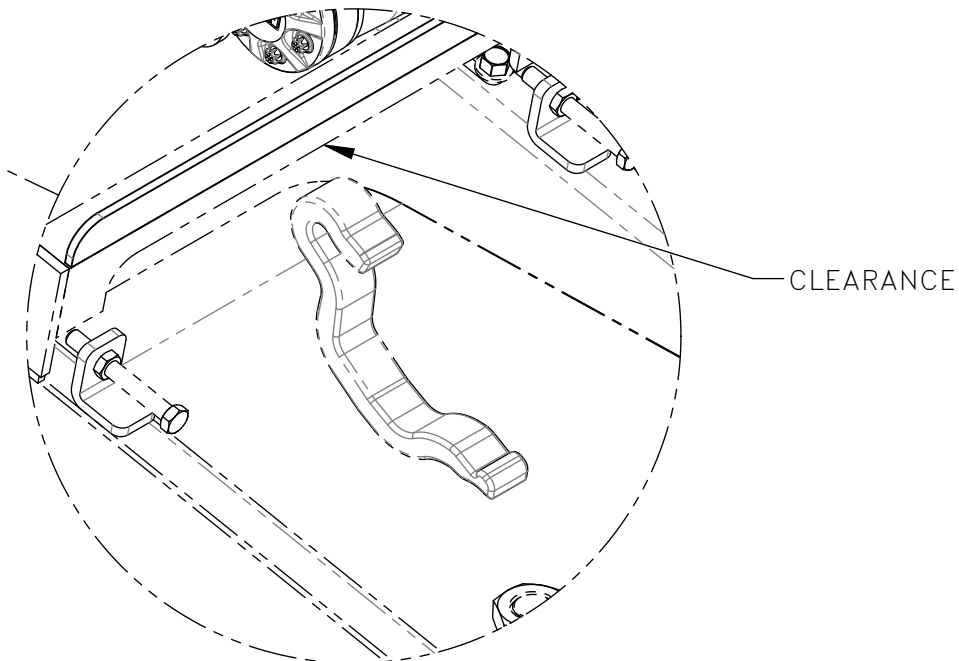
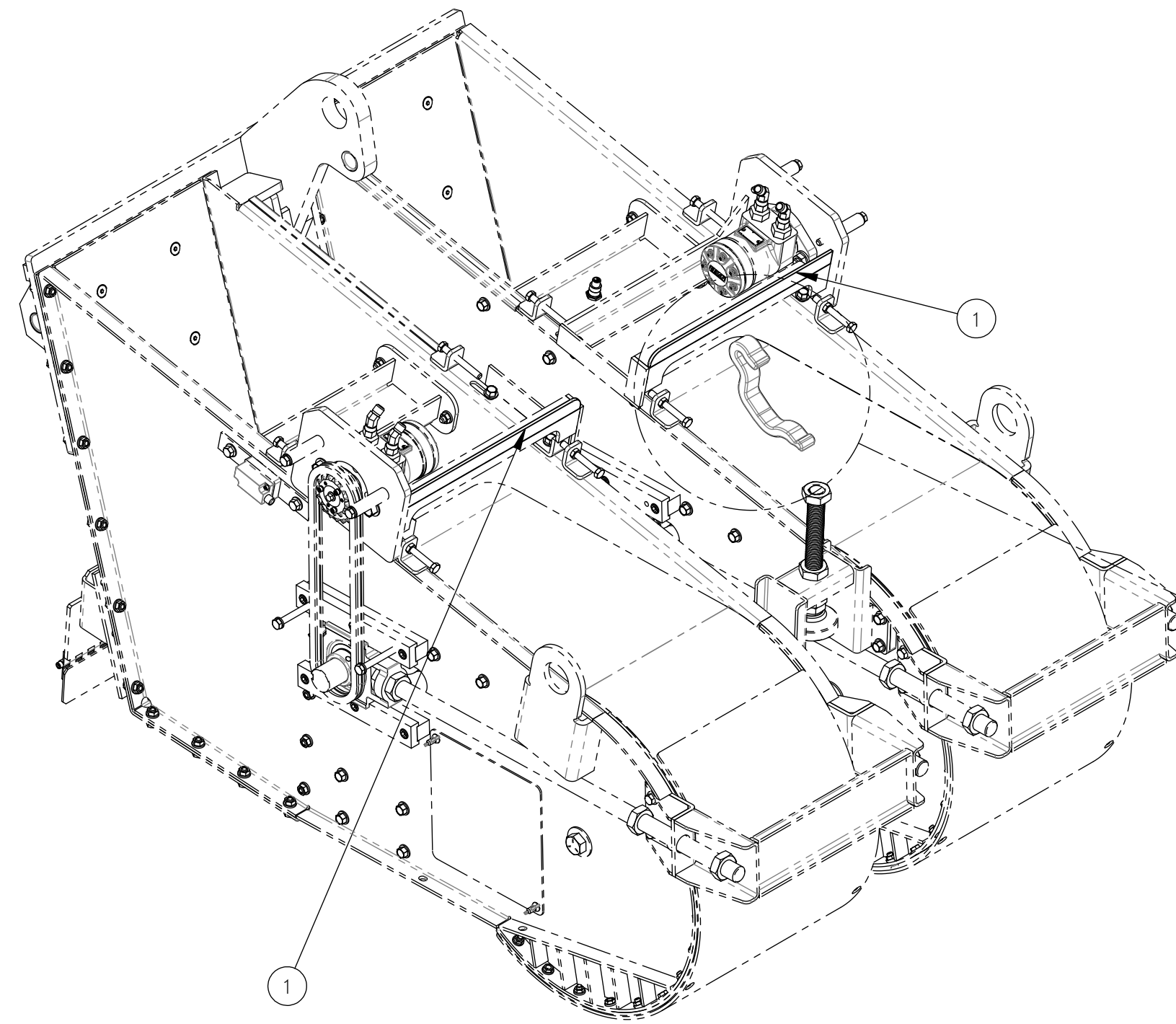
THESE INSTRUCTIONS ARE FOR KIT 793134. (2 KITS PER 910197)

REMOVAL:

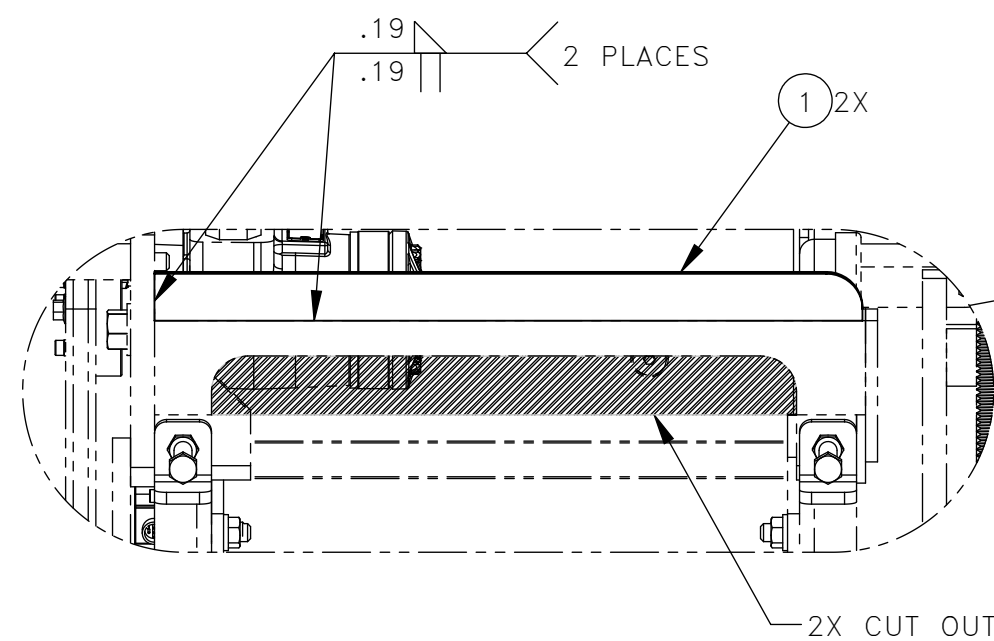
1. POWER OFF MACHINE AND TAG OUT BEFORE PERFORMING CONVERSION.
2. REMOVE BOTH MOTOR BRACKET WELDMENTS FOR REWORK.

INSTALLATION:

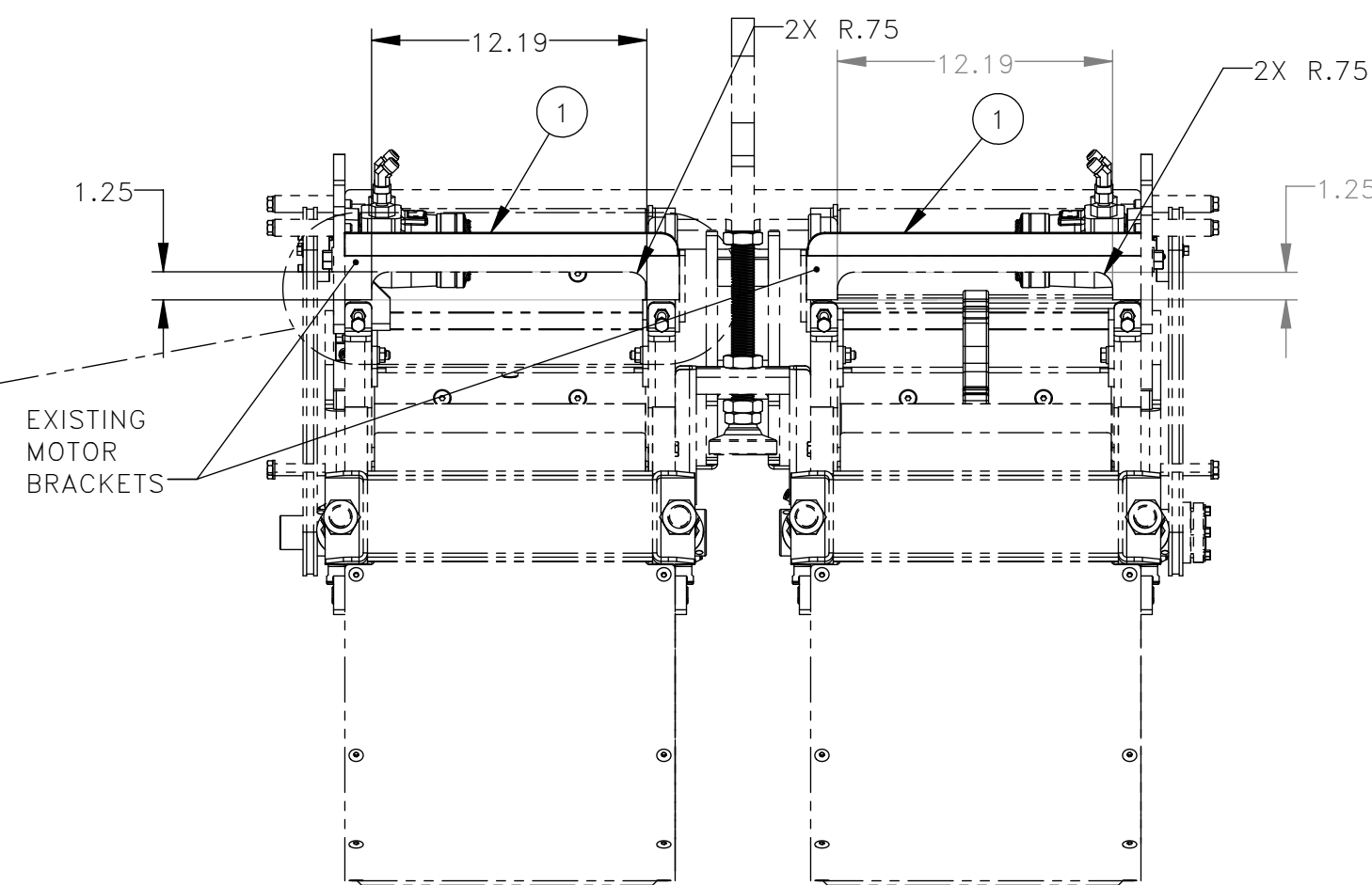
1. CUT CLEARANCE HOLE INTO BOTH CONVEYOR MOTOR BRACKETS AS SHOWN.
2. WELD THE (2) SUPPORT PLATES (SEE DETAIL A-A).



DETAIL B
SCALE 1 : 4



DETAIL A
SCALE 1 : 4



| REV | EN | DESCRIPTION | DATE | DRN |
|-----|------|-------------|-------|-----|
| 1 | 6071 | NEW RELEASE | 01-22 | PR |

DIMENSION TOLERANCES UNLESS OTHERWISE SPECIFIED

| | | |
|---------|----------|------------|
| LINEAR | .XX=±.03 | .XXX=±.010 |
| ANGULAR | X°=±1° | X.X°=±.5° |

SURFACE FINISH 125/✓ SMOOTH ALL SHARP EDGES
NOT TO EXCEED CLEAN ALL WELDS

THIS PRINT AND ALL INFORMATION WITHIN BELONGS TO RACINE RAILROAD PRODUCTS

RACINE RAILROAD PRODUCTS
RACINE, WISCONSIN USA

DESCRIPTION
INSTRUCTIONS, CONVEYOR MOTOR BRACKET

MATERIAL REFERENCE

| USED ON | SCALE | DATE |
|---------|-------|----------|
| 793134 | 1:8 | 01-07-22 |

| DRN | CHK | APP | JOB NO | SHEET |
|-----|-----|-----|----------|--------|
| PR | | | RD180001 | 1 OF 1 |

| DWG SIZE | CATALOG | DWG NO |
|----------|---------|--------|
| C | A | 800381 |