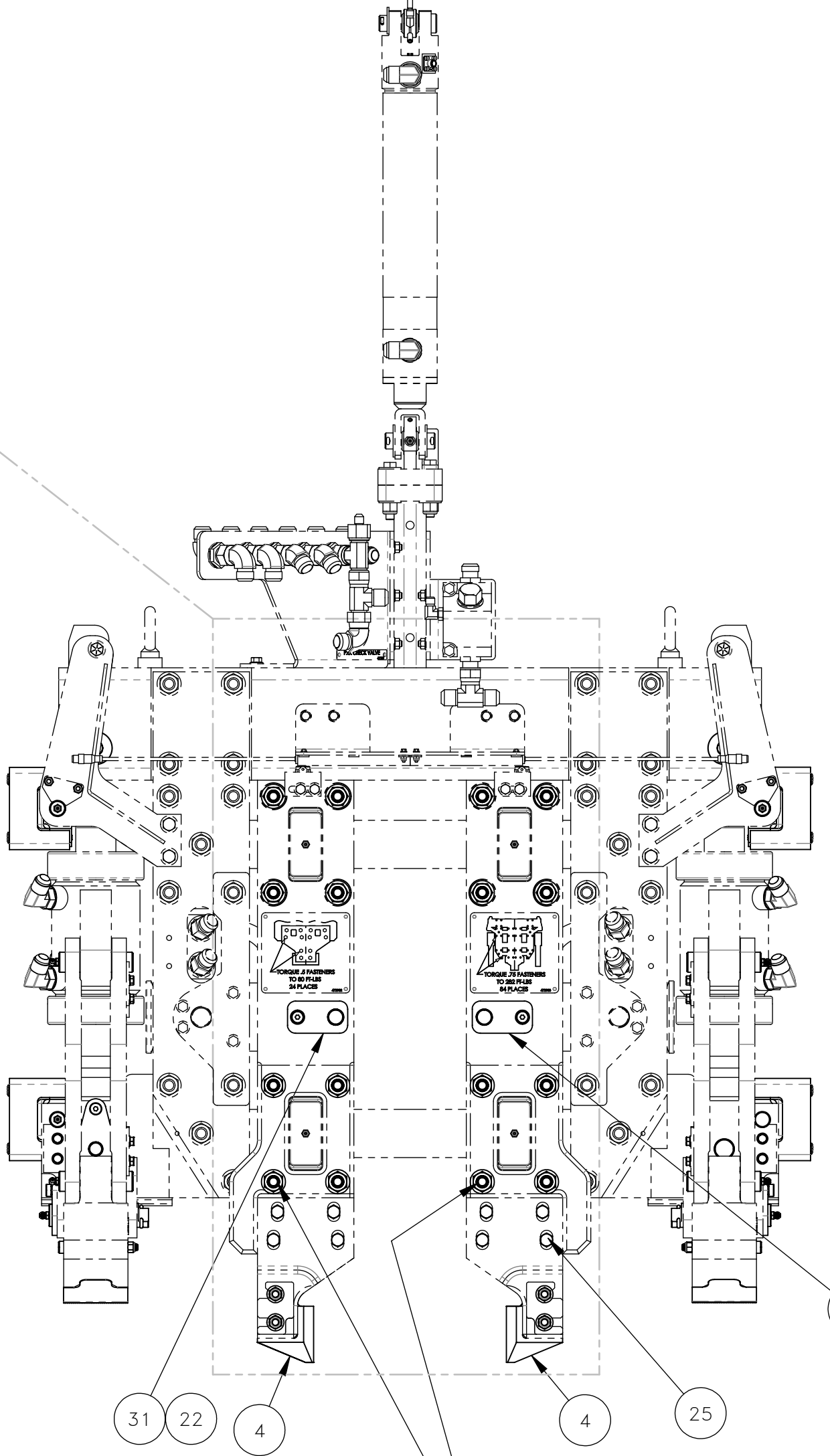


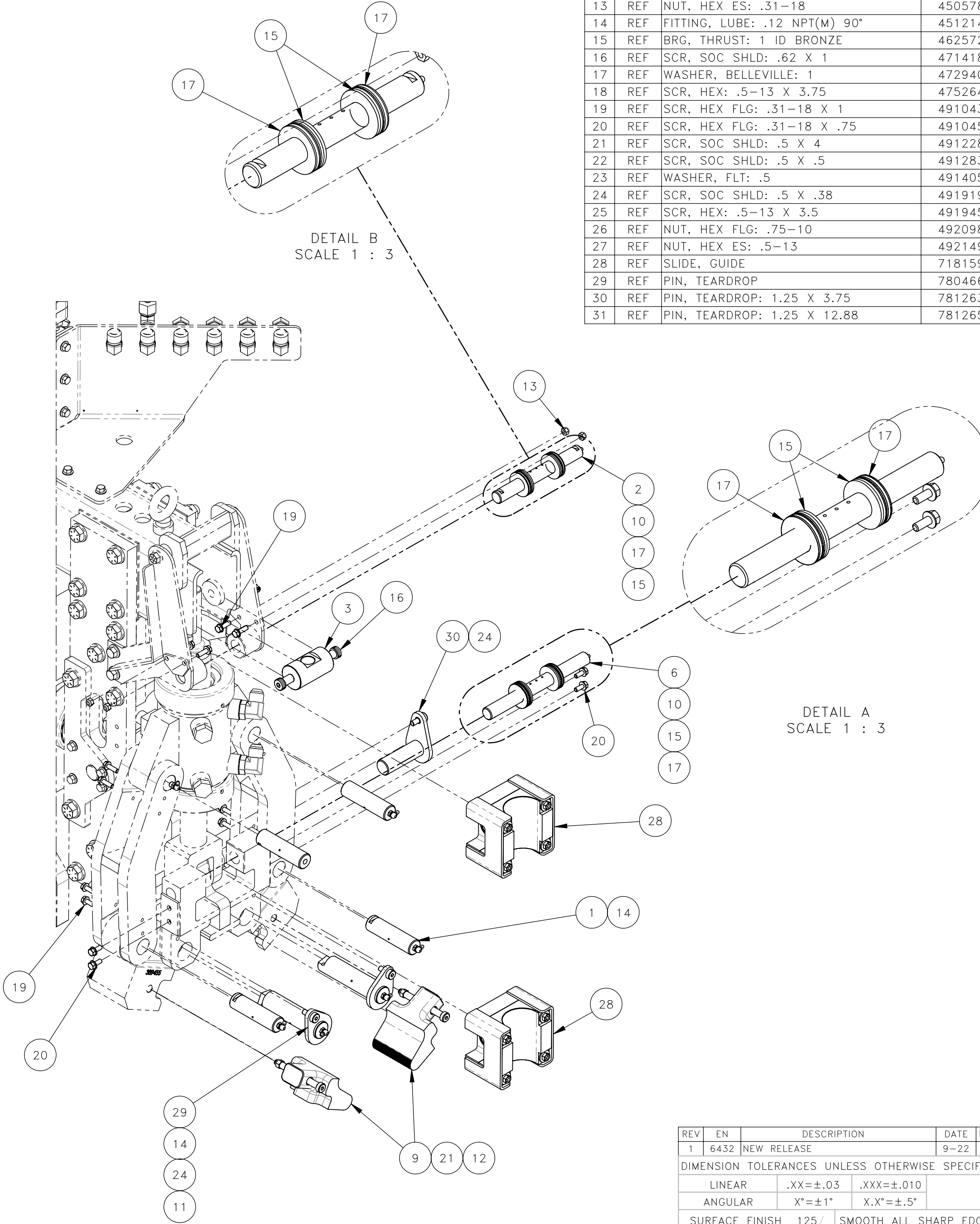
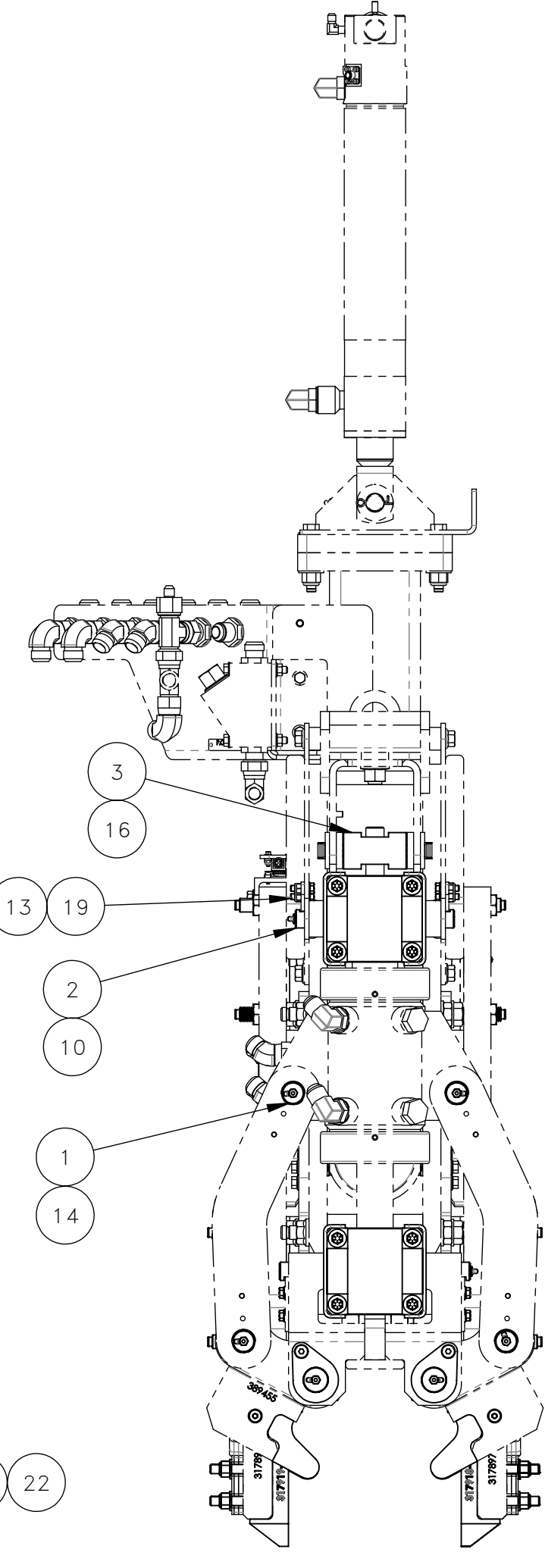
TOOLING PER SIDE

THESE INSTRUCTIONS ARE FOR KIT 793178  
 1. POWER OFF MACHINE AND TAG OUT BEFORE PERFORMING CONVERSION.  
 2. DISCONNECT & LABEL ANY HOSES/WIRING ON BOTH WORKHEADS.

INSTALLATION:  
 1. REPLACE PARTS IN BOM (SEE 793178 FOR PART QUANTITIES).  
 2. REASSEMBLE PER TORQUE SPECS (SEE FRONT VIEW).  
 3. REATTACH ALL HOSES/WIRING ON BOTH WORK HEADS.  
 4. PRIME ANY AIR AND/OR FLUID LINES AS NEEDED.  
 5. LUBRICATE BOTH WORKHEADS.



NOTE 7 26 HARDWARE ORIENTATION  
 TORQUE ALL .75 FASTENERS  
 TO 350 FT.-LBS.



TYPICAL EACH SIDE OF WORKHEAD  
 718257/718258  
 718617/718618

NO.	QTY	DESCRIPTION	PART NO.
1	REF	PIN	314014
2	REF	PIN, ROLLER	314049
3	REF	TRUNION	317884
4	REF	TOOL, LEFT	317918
5	REF	TOOL, RIGHT	317919
6	REF	PIN, SLIDER	317941
7	REF	STUD	317955
8	REF	SPACER	317990
9	REF	JAW, RAIL CLAMP	389456
10	REF	FITTING, LUBE: .12 NPT(M)	401987
11	REF	PIN, COTTER: .19 X 2	403904
12	REF	NUT, HEX ES: .38-16	450577
13	REF	NUT, HEX ES: .31-18	450578
14	REF	FITTING, LUBE: .12 NPT(M) 90°	451214
15	REF	BRG, THRUST: 1 ID BRONZE	462572
16	REF	SCR, SOC SHLD: .62 X 1	471418
17	REF	WASHER, BELLEVILLE: 1	472940
18	REF	SCR, HEX: .5-13 X 3.75	475264
19	REF	SCR, HEX FLG: .31-18 X 1	491043
20	REF	SCR, HEX FLG: .31-18 X .75	491045
21	REF	SCR, SOC SHLD: .5 X 4	491228
22	REF	SCR, SOC SHLD: .5 X .5	491283
23	REF	WASHER, FLT: .5	491405
24	REF	SCR, SOC SHLD: .5 X .38	491919
25	REF	SCR, HEX: .5-13 X 3.5	491945
26	REF	NUT, HEX FLG: .75-10	492098
27	REF	NUT, HEX ES: .5-13	492149
28	REF	SLIDE, GUIDE	718159
29	REF	PIN, TEARDROP	780466
30	REF	PIN, TEARDROP: 1.25 X 3.75	781263
31	REF	PIN, TEARDROP: 1.25 X 12.88	781265

REV	EN	DESCRIPTION	DATE	DRN
1	6432	NEW RELEASE	9-22	PR

DIMENSION TOLERANCES UNLESS OTHERWISE SPECIFIED

LINEAR	.XX=±.03	.XXX=±.010
ANGULAR	X°=±1°	X.X°=±.5°

SURFACE FINISH 125/ NOT TO EXCEED SMOOTH ALL SHARP EDGES CLEAN ALL WELDS

THIS PRINT AND ALL INFORMATION WITHIN BELONGS TO RACINE RAILROAD PRODUCTS

**RACINE RAILROAD PRODUCTS**  
 RACINE, WISCONSIN USA

DESCRIPTION  
 INSTRUCTIONS, 718257/718258  
 REBUILD KIT

MATERIAL  
 SEE BOM

USED ON	SCALE	DATE
793178	1:6	09-20-22

DRN	CHK	APP	JOB NO	SHEET
PR			RD190005	1 OF 1

DWG SIZE	CATALOG	DWG NO
D	A	800401