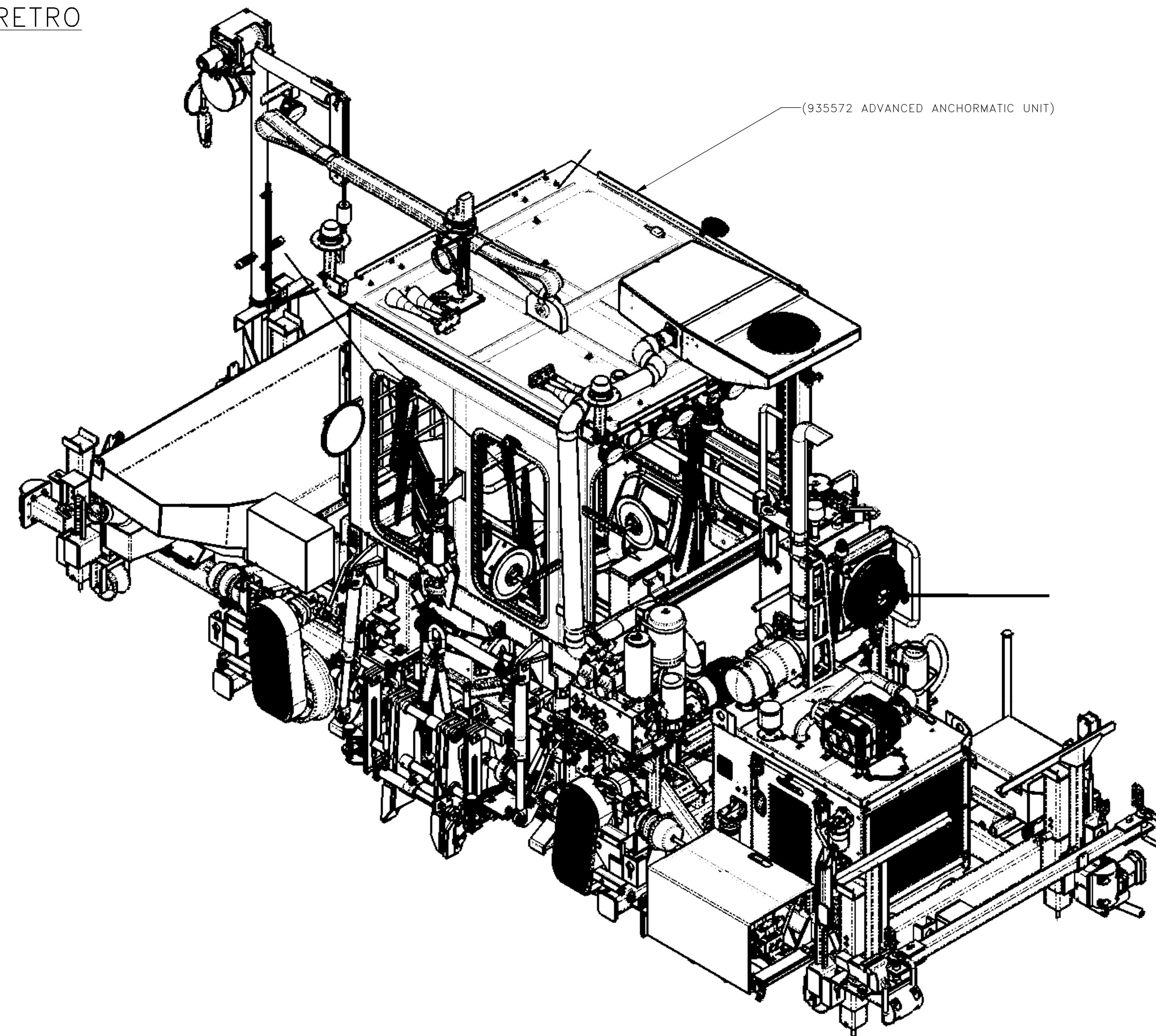
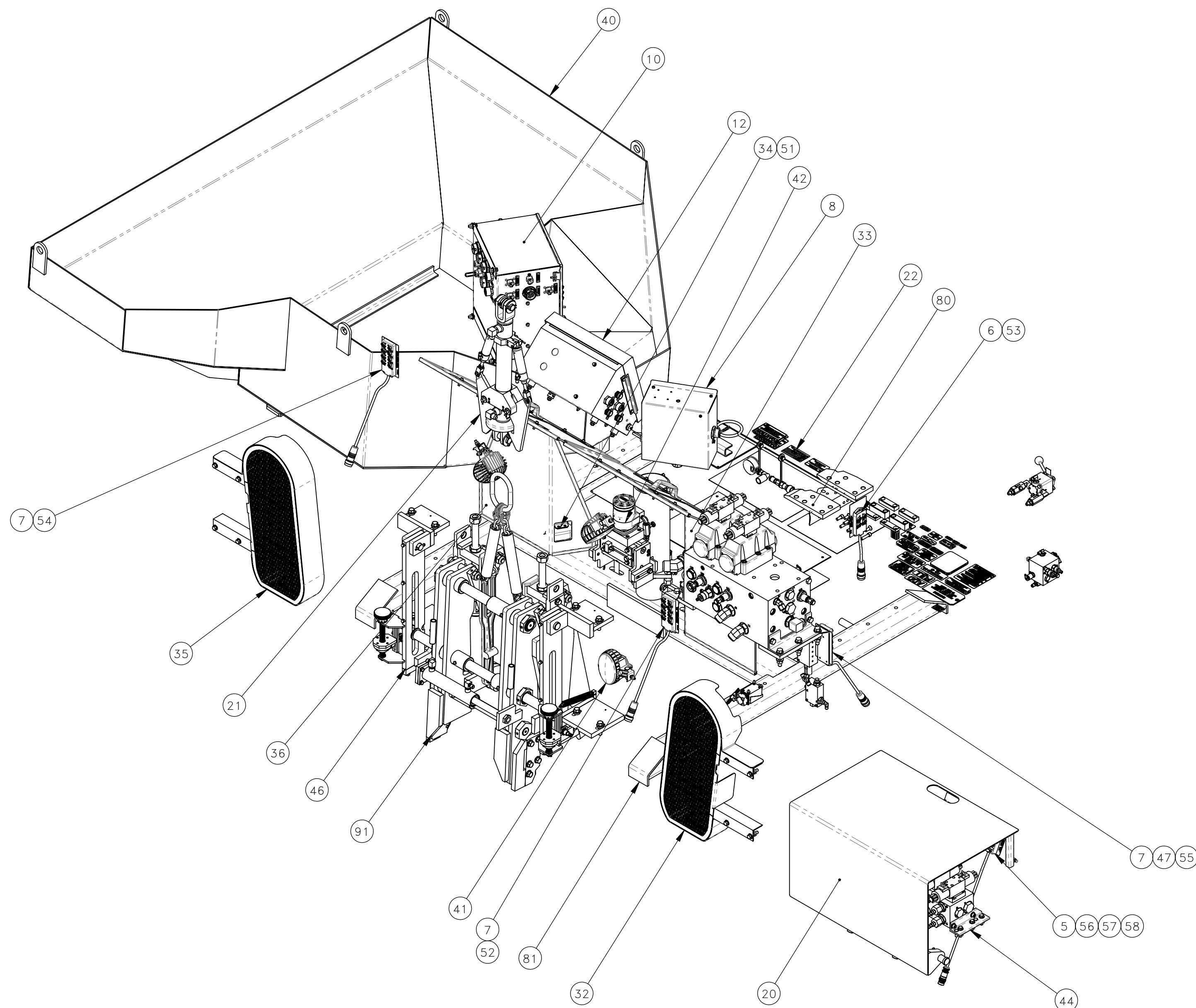


AAM TO AM3 RETRO
USE 793179 KIT, AAM TO AM3 RETRO

DWG NO
800402



SELECTED BOM COMPONENTS TO BE REMOVED FROM 935572 FOR AAM TO AM3 RETROFIT
REFER TO 935572 FOR COMPONENT LOCATION

SEE SHEET 2 FOR COMPONENTS TO ADD

NO.	QTY	DESCRIPTION	PART NO.	NO.	QTY	DESCRIPTION	PART NO.	NO.	QTY	DESCRIPTION	PART NO.
1				33	REF	GUARD, LEFT SETTER ARM	718142	65			
2				34	REF	GUARD, PROPEL FOOT	390459	66	REF	SCHEMATIC, AIR	717835
3				35	REF	GUARD, RIGHT CHAIN	719154	67	REF	SCHEMATIC, ELECTRICAL	719184
4				36	REF	GUARD, RIGHT SETTER ARM	718143	68	REF	SCHEMATIC, HYDRAULIC	719210
5	REF	BOX, DISTRIBUTION: 4 PORT	469286	37				69			
6	REF	BOX, DISTRIBUTION: 4 PORT	468570	38				70			
7	REF	BOX, DISTRIBUTION: 8 PORT	467485	39				71			
8	REF	BOX, ENGINE CONTROL	718174	40	REF	HOPPER	717905	72			
9				41	REF	LIGHT, CLEAR	469726	73			
10	REF	BOX, MACHINE CONTROL	719159	42	REF	LOADER	712940	74			
11				43	REF	MANIFOLD, 5 SECTION AIR	718203	75			
12	REF	BOX, WORKHEAD CONTROL	717639	44	REF	MANIFOLD, 8 STATION	717700	76			
13				45	REF	MANIFOLD, PRESSURE/PROPEL	719209	77			
14				46	REF	MOUNT, APPLY WORKHEAD	717744	78			
15				47	REF	MOUNT, DISTRIBUTION BOX	318507	79			
16	REF	CAMERA, TIE	718272	48				80	REF	TOOLS	717870
17				49				81	REF	TURNTABLE	717841
18	REF	CHOCK, RAIL WHEEL	474087	50				82			
19				51	REF	PEDALS, PROPEL	720158	83			
20	REF	COVER, MANIFOLD	718206	52	REF	PLACARD, DB-1	473357	84			
21	REF	CYLINDER, APPLY WORKHEAD LIFT	717851	53	REF	PLACARD, DB-2	473558	85			
22	REF	DECALS PLACARDS NAMEPLATES	718274	54	REF	PLACARD, DB-3	473559	86	REF	VALVE, SEQUENCE	718202
23				55	REF	PLACARD, DB-4	473560	87			
24				56	REF	PLACARD, DB-5	473561	88			
25				57	REF	PLACARD, DB-6	473562	89			
26				58	REF	PLACARD, DB-7	473563	90	REF	WIRING, INTERCONNECT	719183
27				59	REF	PLUMBING, AIR	717836	91	REF	WORKHEAD, APPLY	718493
28				60	REF	PLUMBING, HYDRAULIC	718291	92			
29				61							
30				62							
31				63							
32	REF	GUARD, LEFT CHAIN	719153	64							

NOTES:

- REMOVE EXISTING COMPONENTS FROM 935572 AS SPECIFIED PER 800402 INSTRUCTIONS, AAM TO AM3 RETRO (SHEET 1)
- REMOVE EXISTING CAB COMPONENTS AS SPECIFIED PER 720423 CAB (SHEET 1)
- REMOVE EXISTING CHASSIS COMPONENTS AS SPECIFIED PER 720410 CHASSIS (SHEET 1)
- REMOVE EXISTING ELECTRICAL CABLES AS SPECIFIED PER 720424 WIRING, INTERCONNECT (SHEET 1)
- REMOVE EXISTING HOSES AS SPECIFIED PER 720417 PLUMBING, HYDRAULIC (SHEET 1)
- REMOVE EXISTING COMPONENTS AS SPECIFIED PER 720425 PLUMBING, AIR (SHEET 1)
- MODIFY EXISTING FRAME PER 782367
- ADD COMPONENTS AS SPECIFIED PER 720410 CHASSIS (SHEET 2)
- ADD COMPONENTS AS SPECIFIED PER 720423 CAB (SHEET 2)
- ADD COMPONENTS AS SPECIFIED PER 793179 KIT, AAM TO AM3 RETRO PER 800402 INSTRUCTIONS, AAM TO AM3 RETRO (SHEET 2-?)
- ADD COMPONENTS AS SPECIFIED PER 720424 WIRING, INTERCONNECT (SHEET 2-4) - REFERENCE 719068 SCHEMATIC, ELECTRICAL
- ADD COMPONENTS AS SPECIFIED PER 720417 PLUMBING, HYDRAULIC (SHEET 2-4) - REFERENCE 720418 HYDRAULIC SCHEMATIC
- ADD COMPONENTS AS SPECIFIED PER 720425 PLUMBING, AIR (SHEET 2) - REFERENCE 720427 SCHEMATIC, AIR

REV	EN	DESCRIPTION	DATE	DRN
1	6583	NEW RELEASE	11-22	KPB

DIMENSION TOLERANCES UNLESS OTHERWISE SPECIFIED

LINEAR	.XX=±.03	.XXX=±.010	KERF ALLOW.
ANGULAR	X'=±1°	X.X'=±.5°	

SURFACE FINISH NOT TO EXCEED 125/ SMOOTH ALL SHARP EDGES CLEAN ALL WELDS

THIS PRINT AND ALL INFORMATION WITHIN BELONGS TO RACINE RAILROAD PRODUCTS

RACINE RAILROAD PRODUCTS
RACINE, WISCONSIN USA

DESCRIPTION
INSTRUCTIONS, AAM TO AM3 RETRO

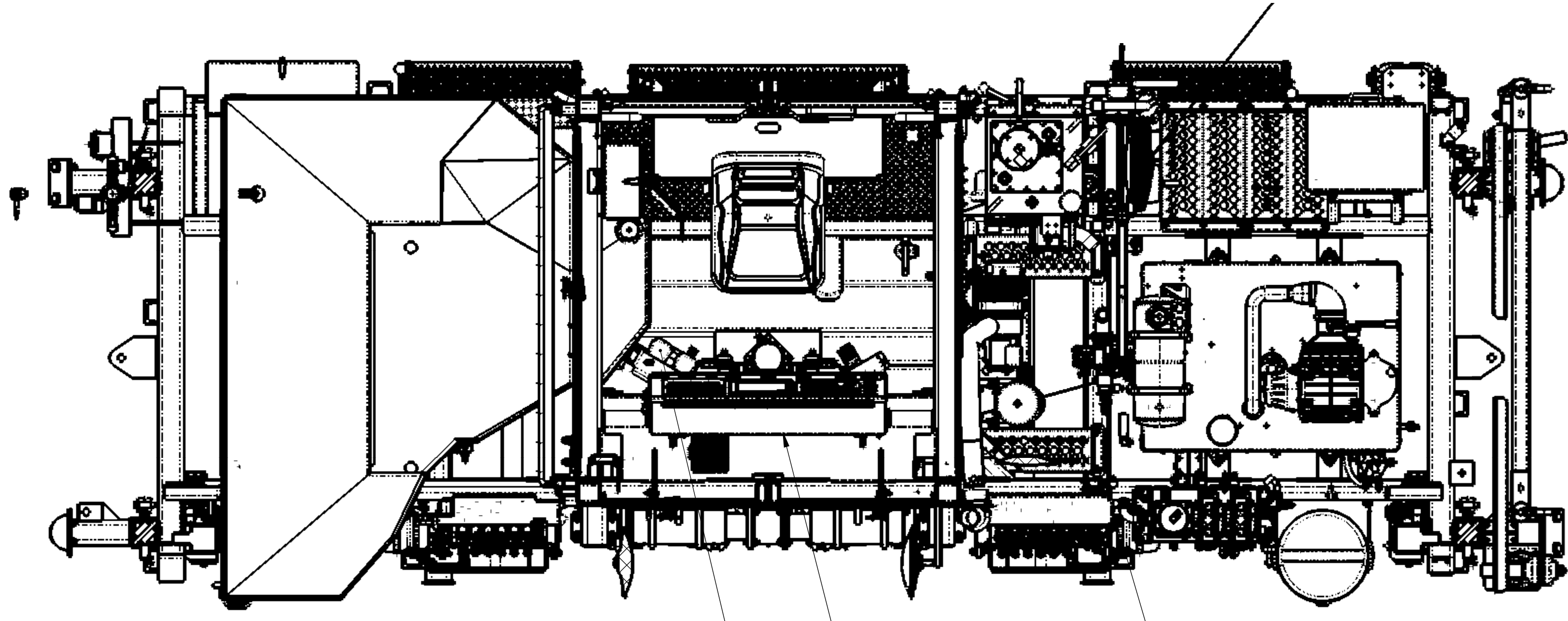
MATERIAL TYPE REFERENCE

USED ON	SCALE	DATE
793179	1:16	11-07-22

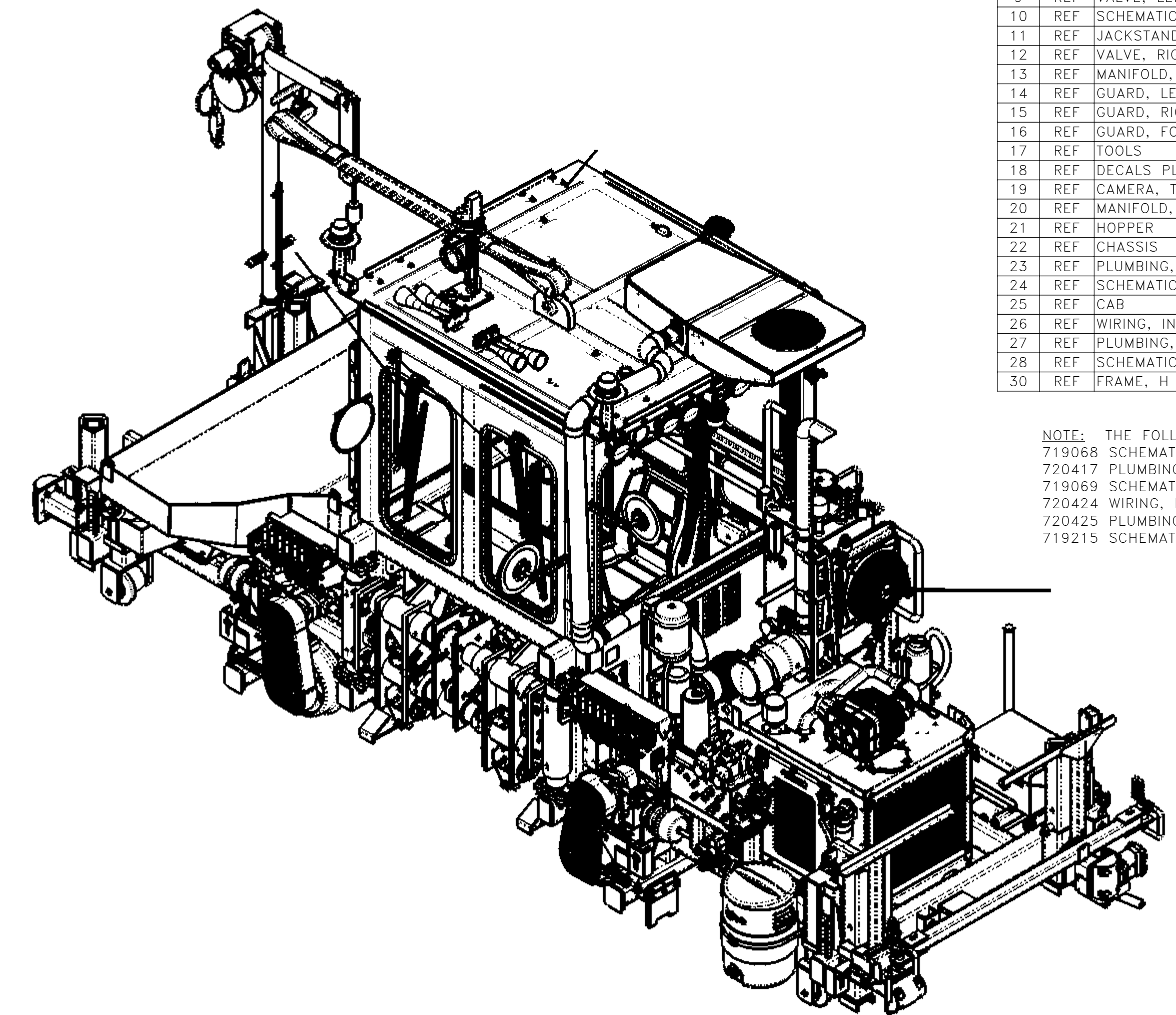
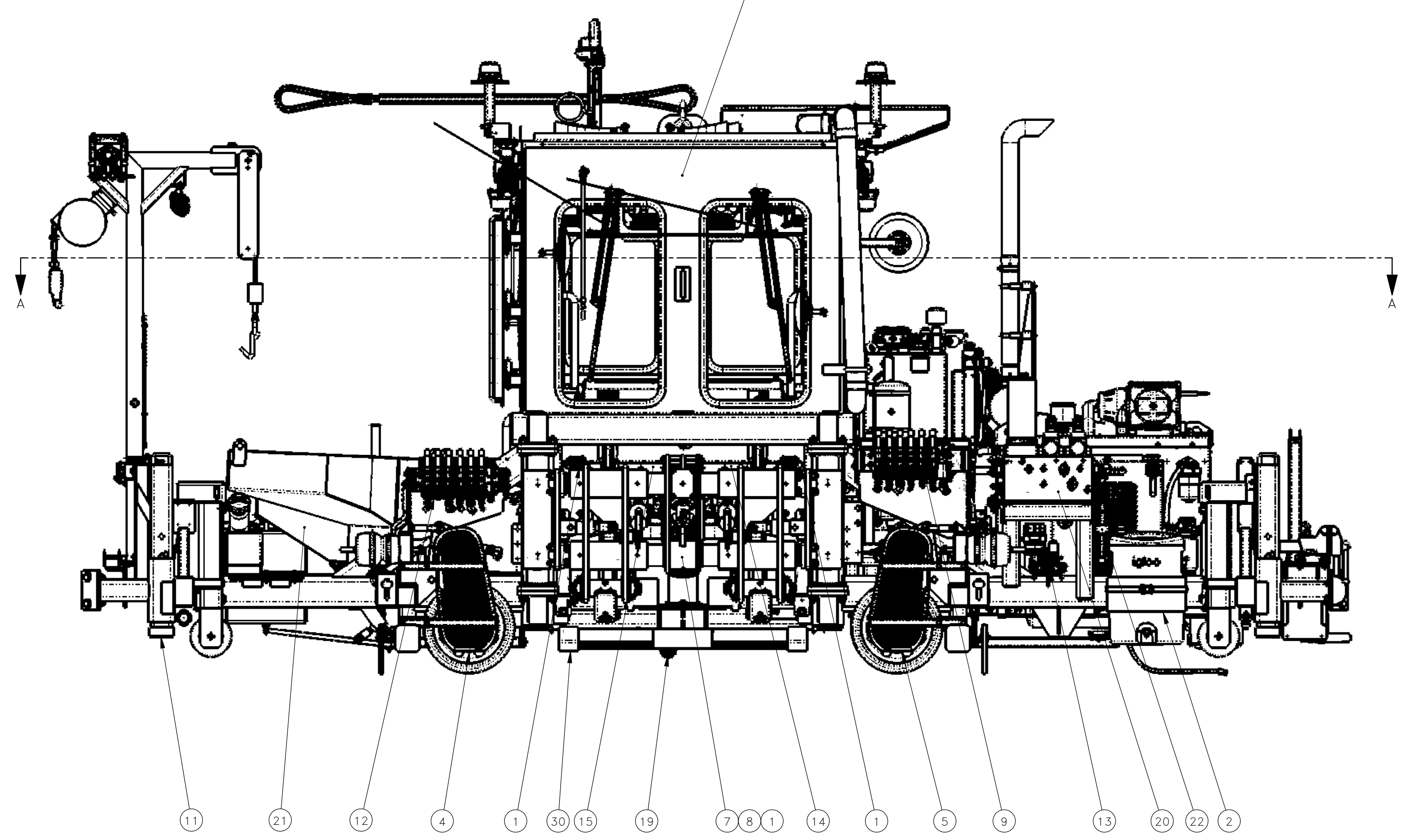
DRN	WEIGHT (LBS)	JOB NO	SHEET
KB	ERROR:Weight	RD190002	1 OF 2

DWG SIZE	CATALOG	DWG NO
D	N	800402

SW MATERIAL: ERROR:SW MATERIAL



SECTION A-A (22)



NO.	QTY	DESCRIPTION	PART NO.
1	REF	LIGHT, CLEAR	469726
2	REF	COOLER, 10 GALLON	715433
3	REF	PEDALS, PROPEL	717766
4	REF	GUARD, CHAIN	718200
5	REF	GUARD, CHAIN	718201
6	REF	MANIFOLD, 5 SECTION AIR	718203
7	REF	WORKHEAD, APPLY	719005
8	REF	LOADER	719023
9	REF	VALVE, LEFT WORKHEAD	719036
10	REF	SCHEMATIC, ELECTRICAL	719068
11	REF	JACKSTAND	719086
12	REF	VALVE, RIGHT WORKHEAD	719094
13	REF	MANIFOLD, D03 2 STATION	719099
14	REF	GUARD, LEFT WORKHEAD	719146
15	REF	GUARD, RIGHT WORKHEAD	719147
16	REF	GUARD, FOOT SWITCH	719148
17	REF	TOOLS	719152
18	REF	DECALS PLACARDS NAMEPLATES, AM3	719282
19	REF	CAMERA, TIE	719290
20	REF	MANIFOLD, PRESSURE/PROPEL	719320
21	REF	HOPPER	719700
22	REF	CHASSIS	720410
23	REF	PLUMBING, HYDRAULIC	720417
24	REF	SCHEMATIC, HYDRAULIC	719069
25	REF	CAB	720423
26	REF	WIRING, INTERCONNECT	720424
27	REF	PLUMBING, AIR	720425
28	REF	SCHEMATIC, AIR	719215
30	REF	FRAME, H	781903

NOTE: THE FOLLOWING BOM ITEMS ARE NOT SHOWN:
 719068 SCHEMATIC, ELECTRICAL
 720417 PLUMBING, HYDRAULIC
 719069 SCHEMATIC, HYDRAULIC
 720424 WIRING, INTERCONNECT
 720425 PLUMBING, AIR
 719215 SCHEMATIC, AIR

REV	EN	DESCRIPTION	DATE	DRN
1		6583 NEW RELEASE	11-22	KPB

DIMENSION TOLERANCES UNLESS OTHERWISE SPECIFIED

LINEAR	.XX=±.03	.XXX=±.010	KERF ALLOW.
ANGULAR	X°=±1°	X.X°=±.5°	

SURFACE FINISH NOT TO EXCEED 125 ✓ SMOOTH ALL SHARP EDGES CLEAN ALL WELDS

THIS PRINT AND ALL INFORMATION WITHIN BELONGS TO RACINE RAILROAD PRODUCTS

RACINE RAILROAD PRODUCTS
 RACINE, WISCONSIN USA

DESCRIPTION
 INSTRUCTIONS, AAM TO AM3 RETRO

MATERIAL TYPE REFERENCE

USED ON	793179	SCALE	DATE
		1:16	11-07-22

DRN	KB	WEIGHT (LBS)	JOB NO	SHEET
		ERROR:Weight	RD190002	2 OF 2

DWG SIZE	CATALOG	DWG NO
D	N	800402