

THESE INSTRUCTIONS ARE FOR KIT 793183.

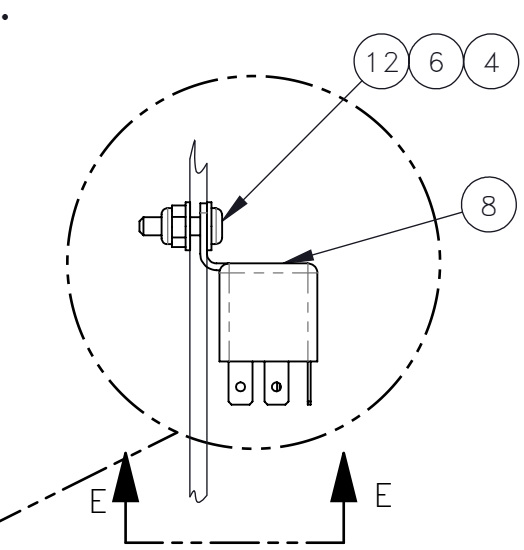
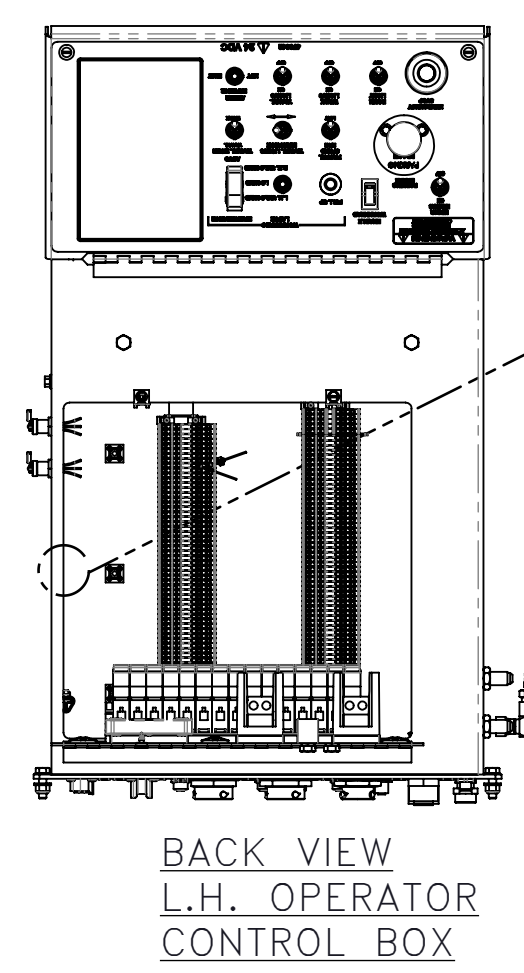
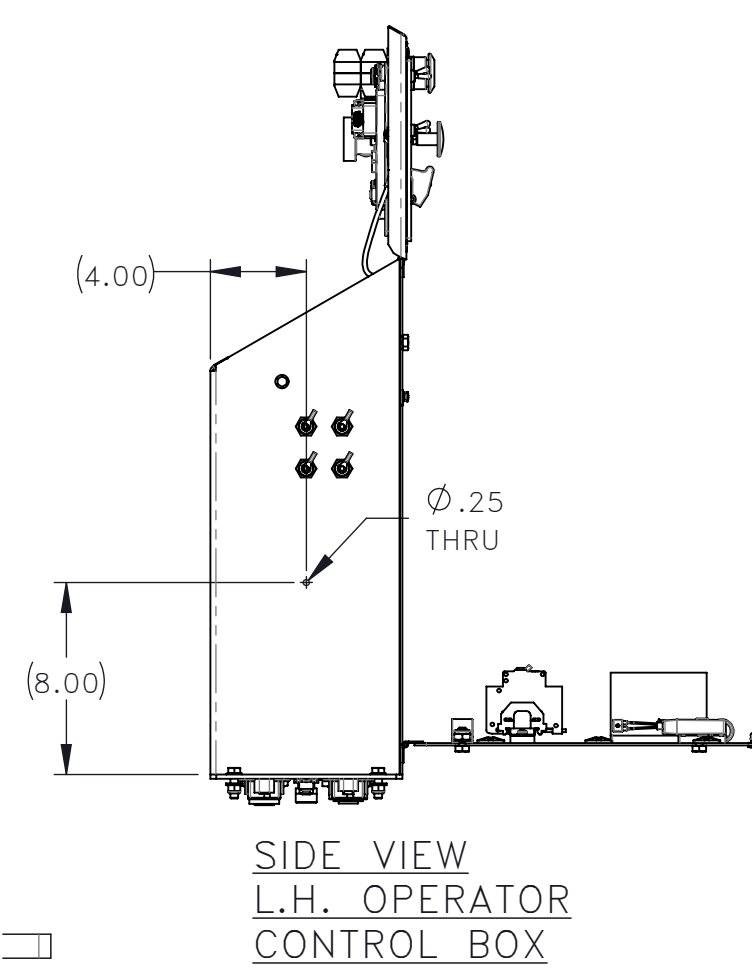
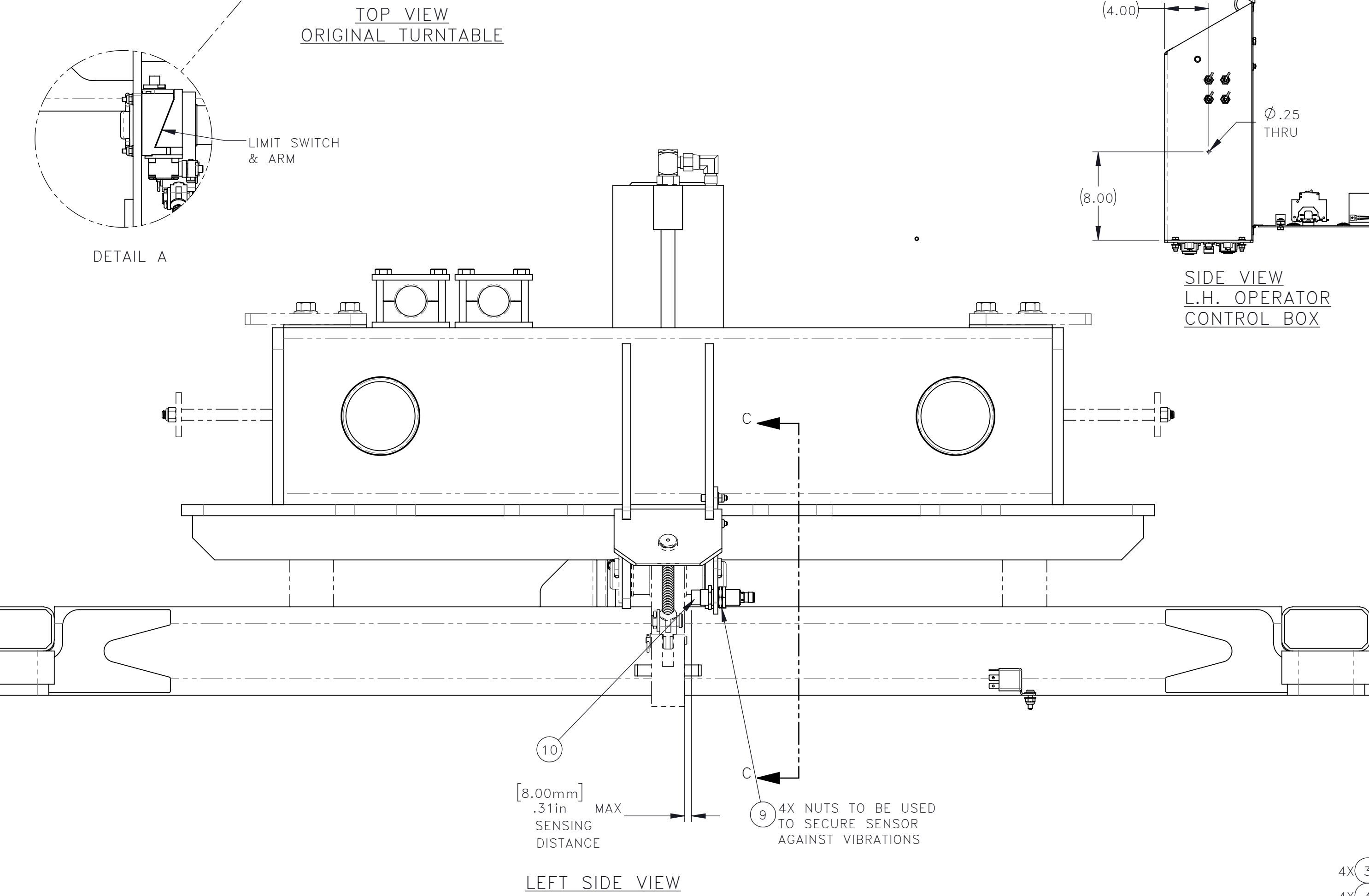
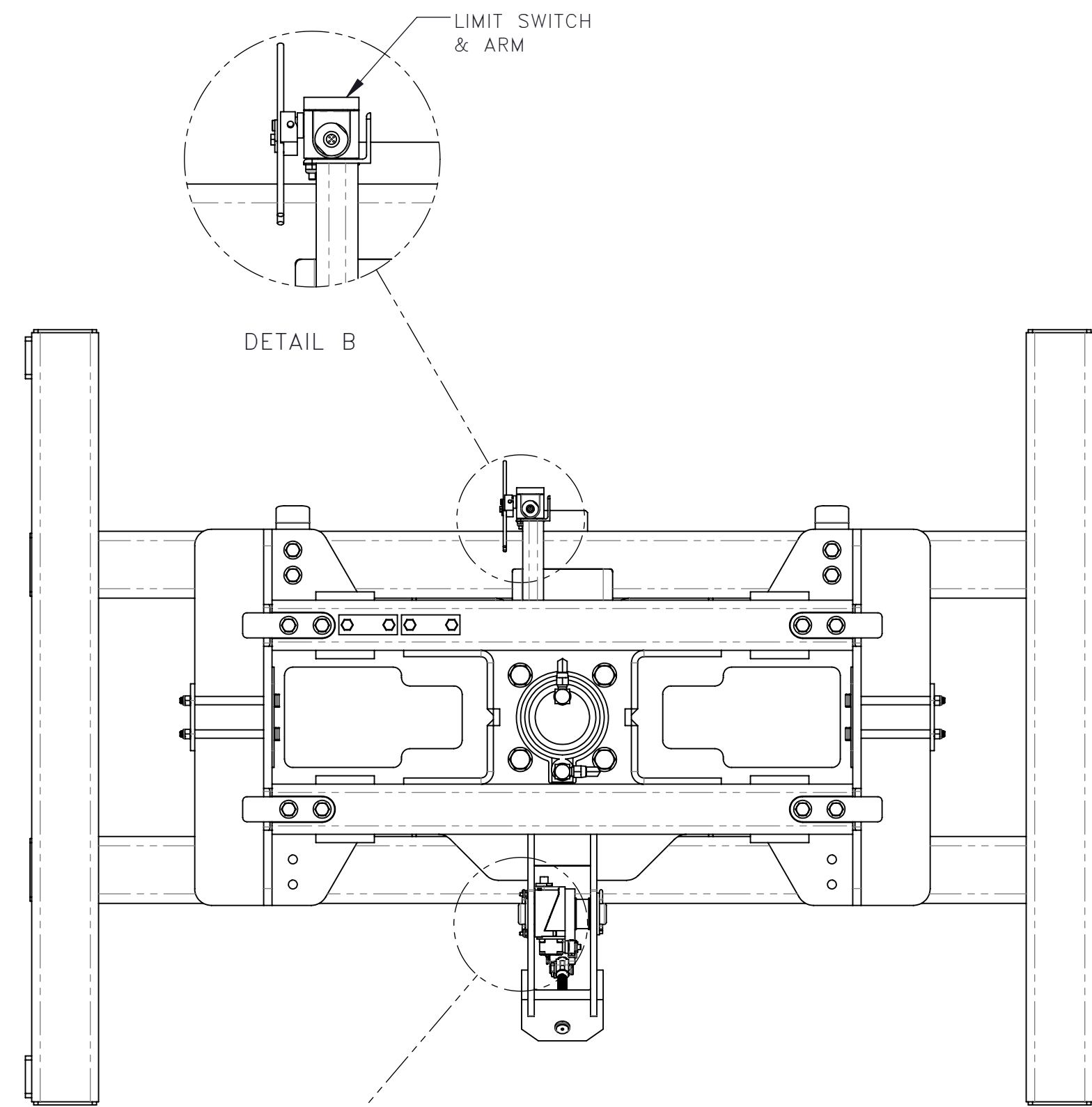
REMOVAL:

1. LOWER TURNTABLE AND LOWER JACKSTANDS.
2. ENSURE MACHINE IS POWERED OFF & TAG OUT BEFORE PERFORMING THE CONVERSION.
3. DISCONNECT LIMIT SWITCHES CABLES AND KEEP.
4. REMOVE LIMIT SWITCHES AND ALL ATTACHMENTS (SEE VIEW A & B).

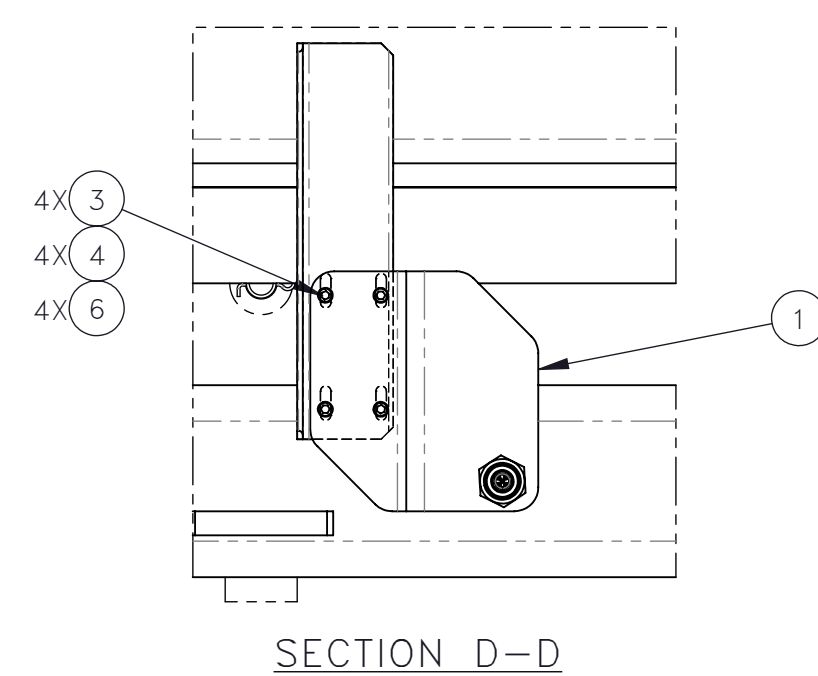
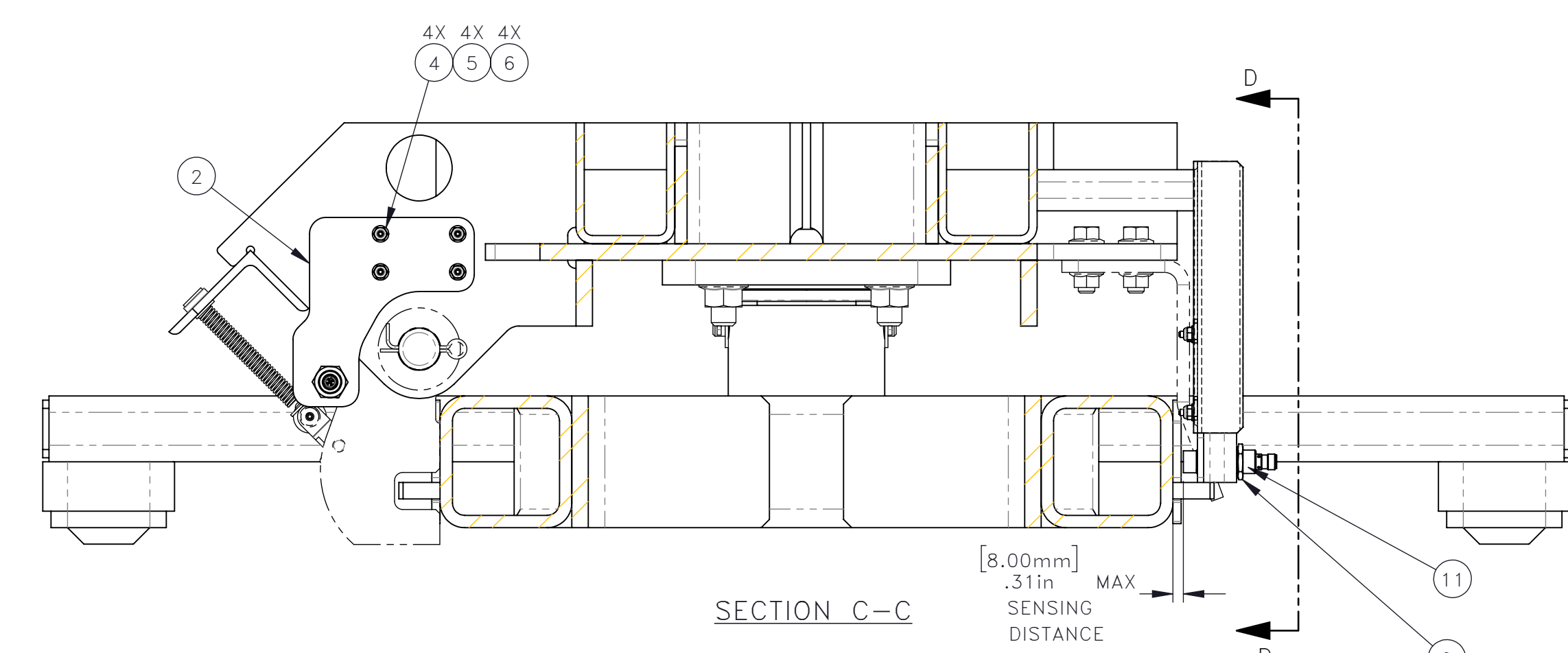
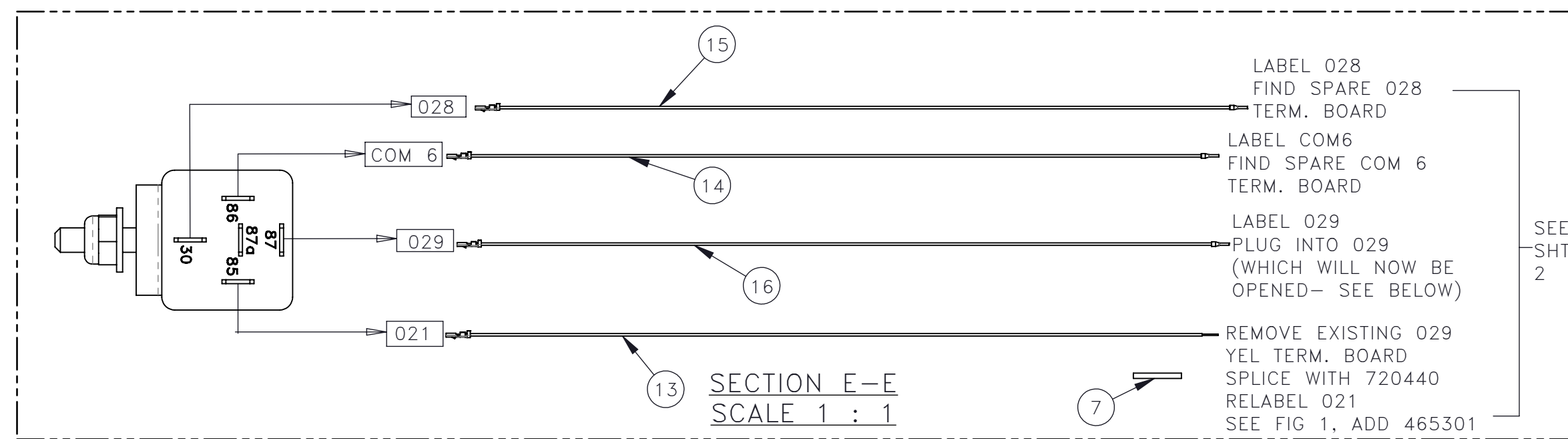
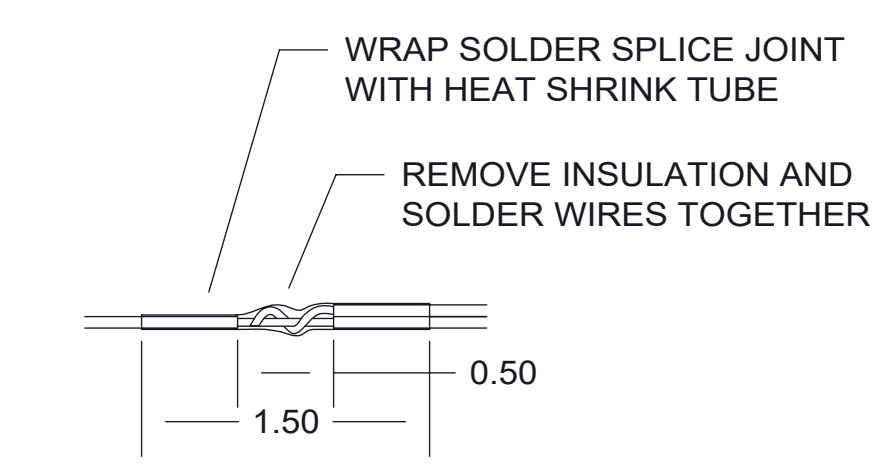
INSTALLATION:

5. ADD NEW BRACKETS AND 8MM PROXIMITY SENSORS (SEE SIDE VIEW; SECTIONS C-C & D-D).
6. CONNECT CABLE INTO THE TWO NEW PROXIMITY SENSORS.
7. OPEN L.H. OPERATOR CONTROL BOX (SEE BACK VIEW L.H. OPERATOR CONTROL BOX).
8. ADD HOLE AND MOUNTING TURNTABLE LATCH RELAY SWITCH (SEE SIDE VIEW L.H. OPERATOR CONTROL BOX).
9. WIRE TURNTABLE LATCH RELAY SWITCH TO EXISTING LAYOUT(SEE SECT. E-E & SHEET 2).
10. CLOSE L.H.OPERATOR BOX
11. REMOVE TAG OUT, DO A STARTUP AND TEST THE TURNTABLE NEW SENSORS.

NO.	QTY	DESCRIPTION	PART NO.
1	REF	BRACKET, PROX	323645
2	REF	BRACKET, PROX	323646
3	REF	SCR, SOC: 10-24 X .75	400775
4	REF	WASHER, FLT: .19	401627
5	REF	SCR, SOC: 10-24 X 1	406852
6	REF	NUT, HEX ES: 10-24	456470
7	REF	TUBING, .13 ID ADHSV HT SHRINK	465301
8	REF	RELAY, SPDT	468442
9	REF	NUT, M18 X 1	473261
10	REF	SENSOR, PROXIMITY	473379
11	REF	SENSOR, PROXIMITY	476872
12	REF	SCR, PAN: 10-24 X .75	491220
13	REF	WIRE, ELEC: RELAY SWITCH	720440
14	REF	WIRE, ELEC: RELAY SWITCH	720441
15	REF	WIRE, ELEC: RELAY SWITCH	720442
16	REF	WIRE, ELEC: RELAY SWITCH	720443



NOTE:
 • INSERT SHEET 2 TO REPLACE SHT 8 DWG 718178
 • INSERT SHEET 3 INTO MANUAL TO REPLACE SHT 5 DWG 718338



REV	EN	DESCRIPTION	DATE	DRN
1	6613	NEW RELEASE	1-23	PR
2	6629	INSTRUCTIONS, TURNTABLE ADJUSTABLE KIT TO INSTRUCTIONS, TURNTABLE PROX SENSOR RETROFIT KIT	1-23	PR

DIMENSION TOLERANCES UNLESS OTHERWISE SPECIFIED

LINEAR	.XX=±.03	.XXX=±.010	KERF ALLOW.
ANGULAR	X' = ±1°	X.X' = ±.5°	

SURFACE FINISH 125/ SMOOTH ALL SHARP EDGES NOT TO EXCEED

THIS PRINT AND ALL INFORMATION WITHIN BELONGS TO RACINE RAILROAD PRODUCTS

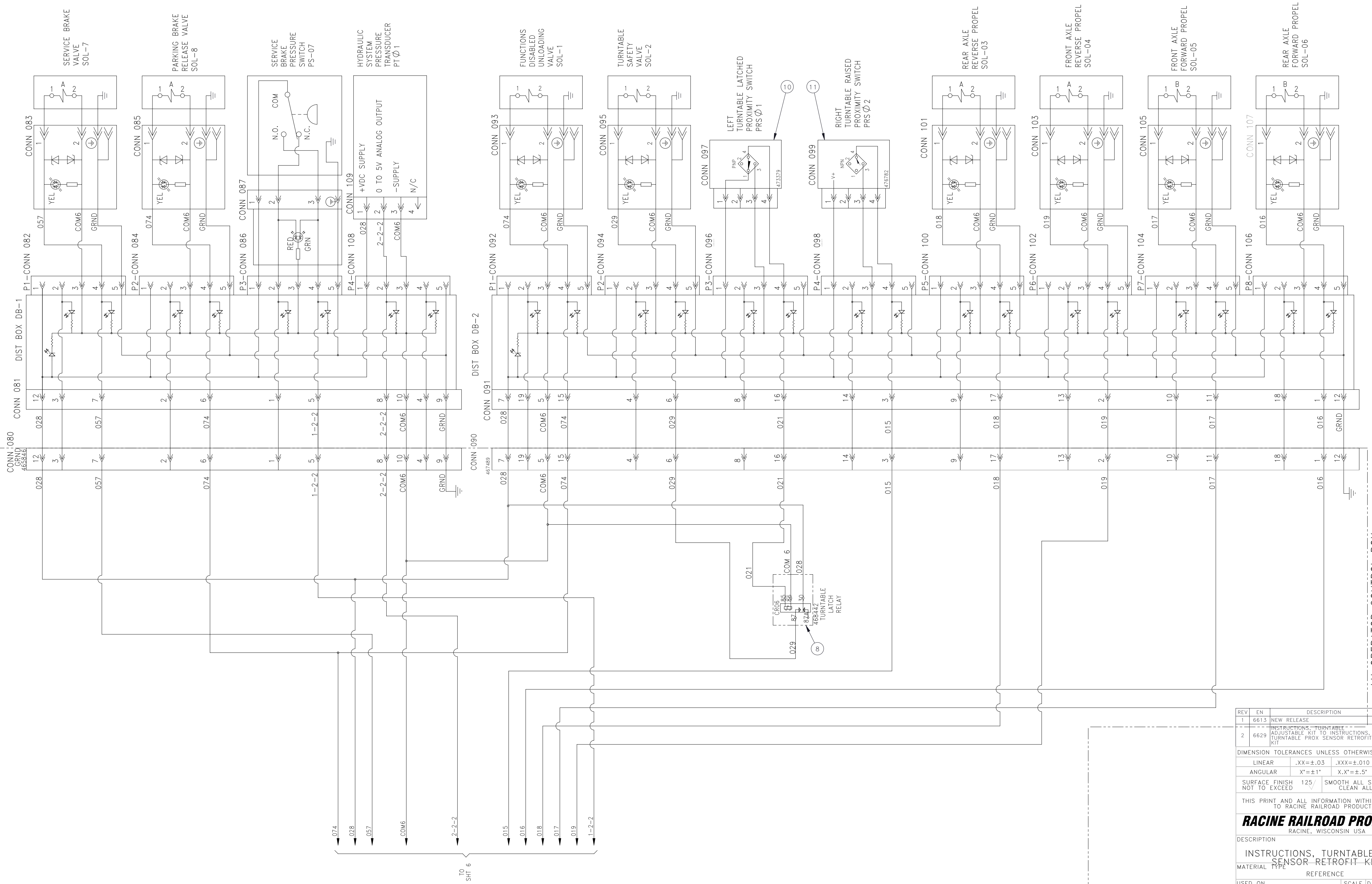
RACINE RAILROAD PRODUCTS
 RACINE, WISCONSIN USA

DESCRIPTION INSTRUCTIONS, TURNTABLE PROX SENSOR RETROFIT KIT

MATERIAL TYPE REFERENCE

USED ON	WEIGHT (LBS)	JOB NO	SHEET
793183		RD190005	1 OF 3

DWG SIZE D CATALOG A DWG NO 800406



REV	EN	DESCRIPTION	DATE	DRN
1	6613	NEW RELEASE	1-23	PR
2	6629	INSTRUCTIONS, TURNTABLE ADJUSTABLE KIT TO INSTRUCTIONS, TURNTABLE PROX SENSOR RETROFIT KIT	1-23	PR

DIMENSION TOLERANCES UNLESS OTHERWISE SPECIFIED

LINEAR	.XX=±.03	.XXX=±.010	KERF ALLOW.
ANGULAR	X'=±1°	X.X'=±.5°	

SURFACE FINISH 125/ SMOOTH ALL SHARP EDGES NOT TO EXCEED CLEAN ALL WELDS

THIS PRINT AND ALL INFORMATION WITHIN BELONGS TO RACINE RAILROAD PRODUCTS

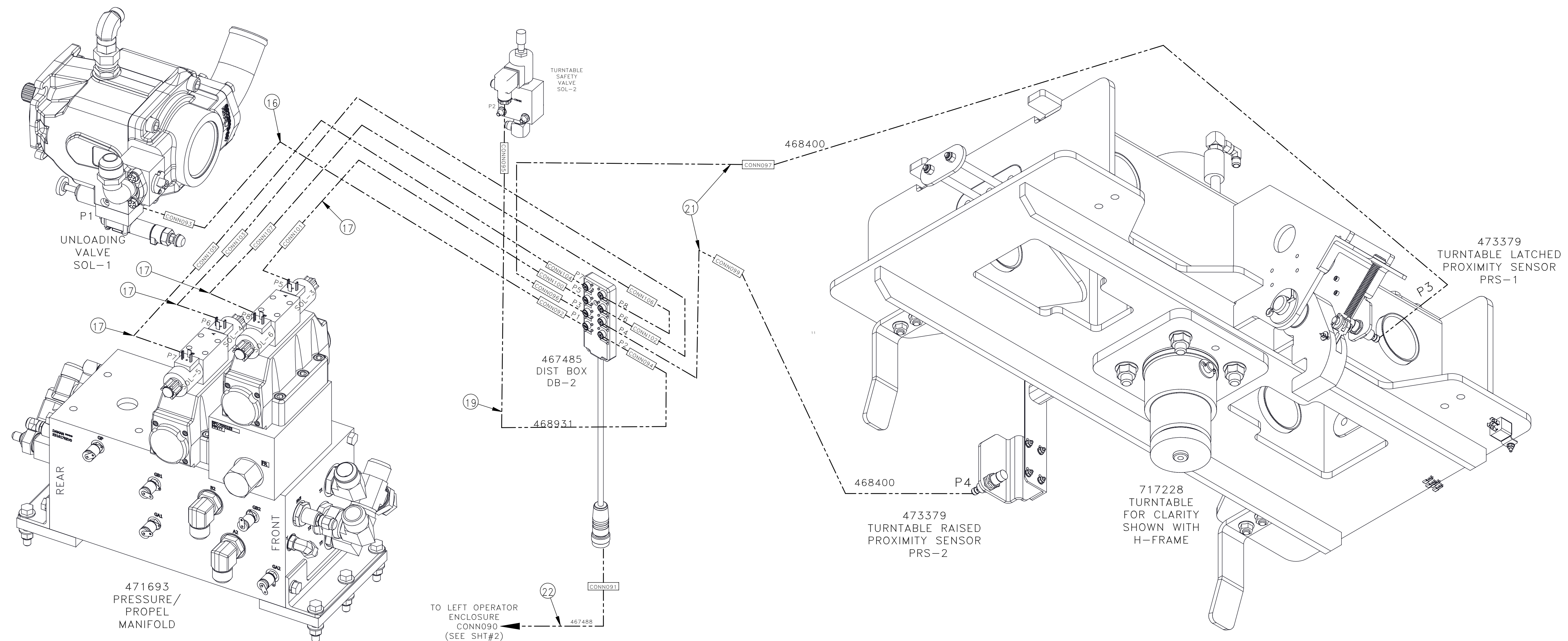
RACINE RAILROAD PRODUCTS
RACINE, WISCONSIN USA

DESCRIPTION
INSTRUCTIONS, TURNTABLE PROX SENSOR RETROFIT KIT

MATERIAL TYPE REFERENCE

USED ON	793183	SCALE	DATE
		1:4	12-21-22
DRN	PR	WEIGHT (LBS)	JOB NO
			RD190005
DWG SIZE	CATALOG	DWG NO	SHEET
D	A		2 OF 3

800406



REV	EN	DESCRIPTION	DATE	DRN
1	6613	NEW RELEASE	1-23	PR
2	6629	INSTRUCTIONS, TURNABLE ADJUSTABLE KIT TO INSTRUCTIONS, TURNABLE PROX SENSOR RETROFIT KIT	1-23	PR

DIMENSION TOLERANCES UNLESS OTHERWISE SPECIFIED

LINEAR	.XX=±.03	.XXX=±.010	KERF ALLOW.
ANGULAR	X'=±1"	X.X'=±.5"	

SURFACE FINISH NOT TO EXCEED 125/√ SMOOTH ALL SHARP EDGES CLEAN ALL WELDS

THIS PRINT AND ALL INFORMATION WITHIN BELONGS TO RACINE RAILROAD PRODUCTS

RACINE RAILROAD PRODUCTS
RACINE, WISCONSIN USA

DESCRIPTION
INSTRUCTIONS, TURNABLE PROX SENSOR RETROFIT KIT

MATERIAL TYPE REFERENCE

USED ON	793183	SCALE	DATE
		1:4	12-21-22
DRN	PR	WEIGHT (LBS)	JOB NO
			RD190005
DWG SIZE	CATALOG	DWG NO	SHEET
D	A		3 OF 3

800406