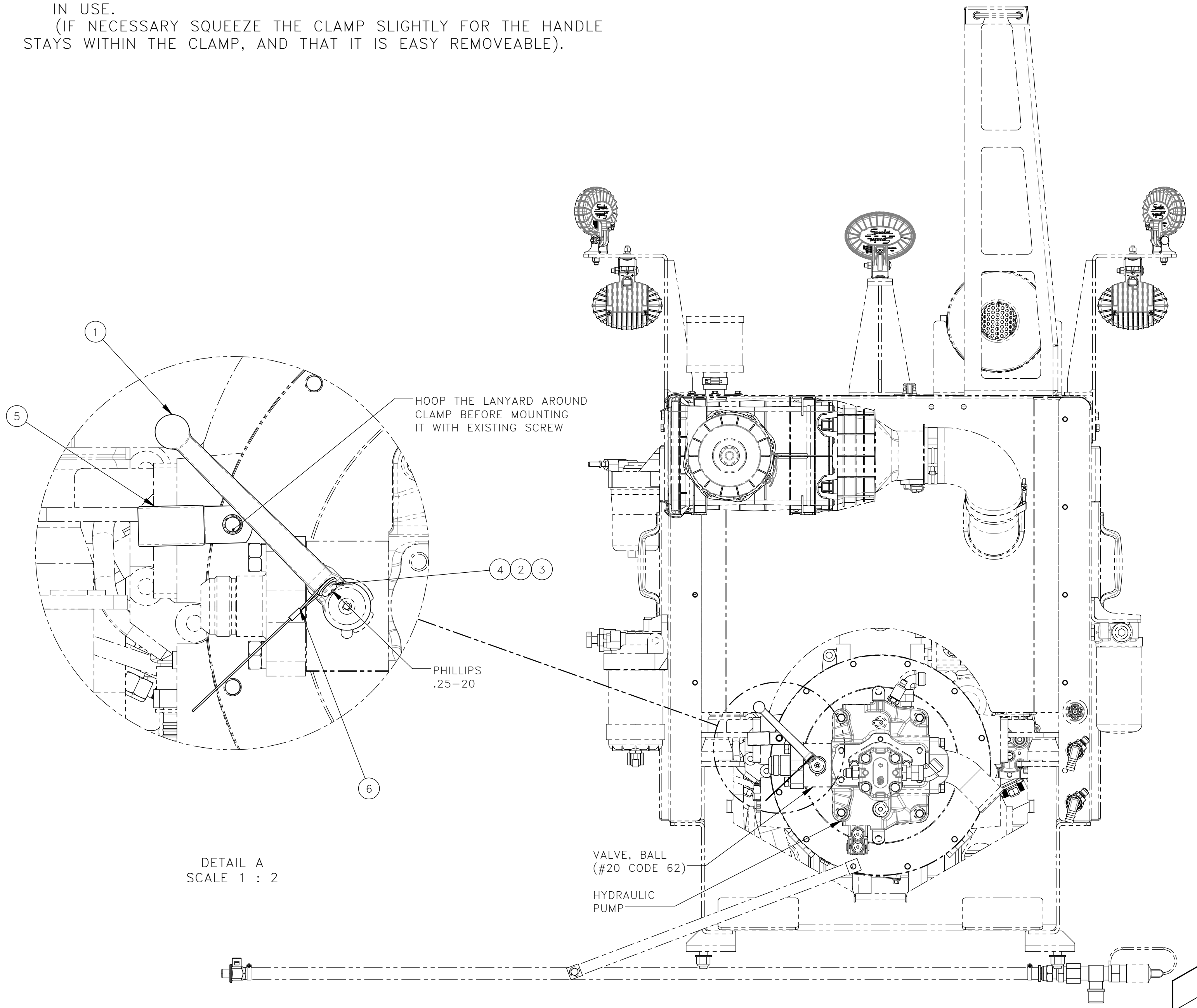


THESE INSTRUCTIONS ARE FOR KIT 793185

**INSTALLATION:**

1. LOOP THE LANYARD ROUND THE CLAMP
  2. ATTACH CLAMP USING EXISTING FASTENER ROUND ENGINE SHROUD AS SHOWN IN DETAIL A.
  3. WITH THE OPPOSITE END OF THE LANTARD ATTACH TO HANDLE THROUD EXISTING HOLE AS SHOWN IN DETAIL A.
  4. PLACE THE HANDLE BALL END DOWN INTO THE CLAMP WHEN NOT IN USE.
- (IF NECESSARY SQUEEZE THE CLAMP SLIGHTLY FOR THE HANDLE STAYS WITHIN THE CLAMP, AND THAT IT IS EASY REMOVEABLE).

NO.	QTY	DESCRIPTION	PART NO.
1	REF	HANDLE, SW14 BALL VALVE #20 CODE 62	323773
2	REF	WASHER, FLT: .25	401626
3	REF	NUT, HEX ES JAM: .25-20 HVY	404282
4	REF	SCR, PAN: .25-20 X .88	405108
5	REF	CLAMP, HOSE: 1.5 DIA	454634
6	REF	LANYARD, .047 X 24	469531



DETAIL A  
SCALE 1 : 2

REV	EN	DESCRIPTION	DATE	DRN
1	00151	NEW RELEASE	2-23	PR

DIMENSION TOLERANCES UNLESS OTHERWISE SPECIFIED

LINEAR	.XX=±.03	.XXX=±.010	KERF ALLOW.
ANGULAR	X°=±1°	X.X°=±.5°	

SURFACE FINISH 125/ ✓ SMOOTH ALL SHARP EDGES  
NOT TO EXCEED CLEAN ALL WELDS

THIS PRINT AND ALL INFORMATION WITHIN BELONGS TO RACINE RAILROAD PRODUCTS

**RACINE RAILROAD PRODUCTS**  
RACINE, WISCONSIN USA

DESCRIPTION  
INSTRUCTIONS, HYDRAULIC PUMP VALVE HANDLE KIT

MATERIAL TYPE REFERENCE

USED ON	793185	SCALE	1:6	DATE	02-16-23
DRN	PR	WEIGHT (LBS)	JOB NO	RD190005	SHEET 1 OF 1
DWG SIZE	C	CATALOG	A	DWG NO	800407