

THESE INSTRUCTIONS ARE FOR KIT 793186.

INSTALLATION:

ENSURE MACHINE IS POWERED OFF AND LOCK OUT-TAG OUT IS IN PLACE BEFORE PERFORMING THE CONVERSION.

WORK HEAD DB-2 (SEE DETAIL A)

1. CLIP ZIP-TIES HOLDING CABLES TO THE DB BLOCK SO THE WIRES CAN BE LEAD TO THE BOTTOM OF BLOCK FOR THE COVER TO FIT.(SOME REROUTING MAY BE NEEDED).
2. REMOVE FASTENERS ONE AT A TIME FROM EACH MURR BLOCK THEN INSERT STANDOFF'S (720478). DO THIS FOR ALL 3 (SEE SECTION B-B).
3. REMOVE THE THUMB SCREW FROM BAG ATTACHED TO 720478 APPLY THE SPRING WASHER FOR ALL 3 HOLES ON COVER782404 (SEE DETAIL L).
4. **LINCOLN GREASER:** UNPLUG GREASE PORT CONN 163 AND CONN 165 . BRING IN NEW HARNESS EXTINCTION 720483 AND INSERT INTO CONN 163 AND CONN 165 (SEE FIG 1.1).
GRACO GREASER: UNPLUG GREASE CONN 164 ON DB-2(P1) AND CONN 169. BRING IN NEW HARNESS EXTINCTION 720483 AND INSERT INTO PORT P1 ON DB-2 CONN 164 AND CONN 169 (SEE FIG 1.2).
5. ALIGN COVER WITH MURR BLOCK TOP AND SIDES.
6. THE COVER THUMB SCREWS ONLY NEED A 1/4 TURN TO LOCK (SEE SECTION F-F).
7. SECTION THE CABLES TO EITHER SIDE OF MURR BLOCK AND RE-INSTALL ZIP-TIES IF NECESSARY.

OUTER REAR CAB DB-2 & DB-3 (SEE SECTION A-A)

8. CLIP ZIP-TIES HOLDING CABLES TO THE DB'S BLOCKS SO THE WIRES CAN BE LEAD TO THE BOTTOM OF BLOCK FOR THE COVER TO FIT.(SOME REROUTING MAY BE NEEDED).
9. REMOVE FASTENERS FROM DB-5 & DB-6 THEN INSERT STANDOFF INCLUDED IN 2 OF 720479. DO THIS FOR ALL 3 EACH DB BLOCK.
10. REMOVE THE THUMB SCREW FROM BAG ATTACHED TO 720478 APPLY THE SPRING WASHER FOR ALL 3 HOLES ON COVER782404 (SEE DETAIL L).
11. UNPLUG JUMP CABLE 473217 AND REPLACE IT WITH NEW CABLE 473215 PLUG INTO DB-5 PORT STAT AND DB-6 PORT COM (SEE DETAIL D & G).
12. ALIGN COVER WITH MURR BLOCK TOP AND SIDES HOLD AGAINST THE PLACARD.
13. THE COVER THUMB SCREWS ONLY NEED A 1/4 TURN TO LOCK (SEE SECTION F-F).
14. SECTION THE CABLES TO EITHER SIDE OF MURR BLOCK AND RE-INSTALL ZIP-TIES IF NECESSARY.

NOTE: SHEET 2 ARE ACTUAL PICTURES OF COVER PLACEMENTS

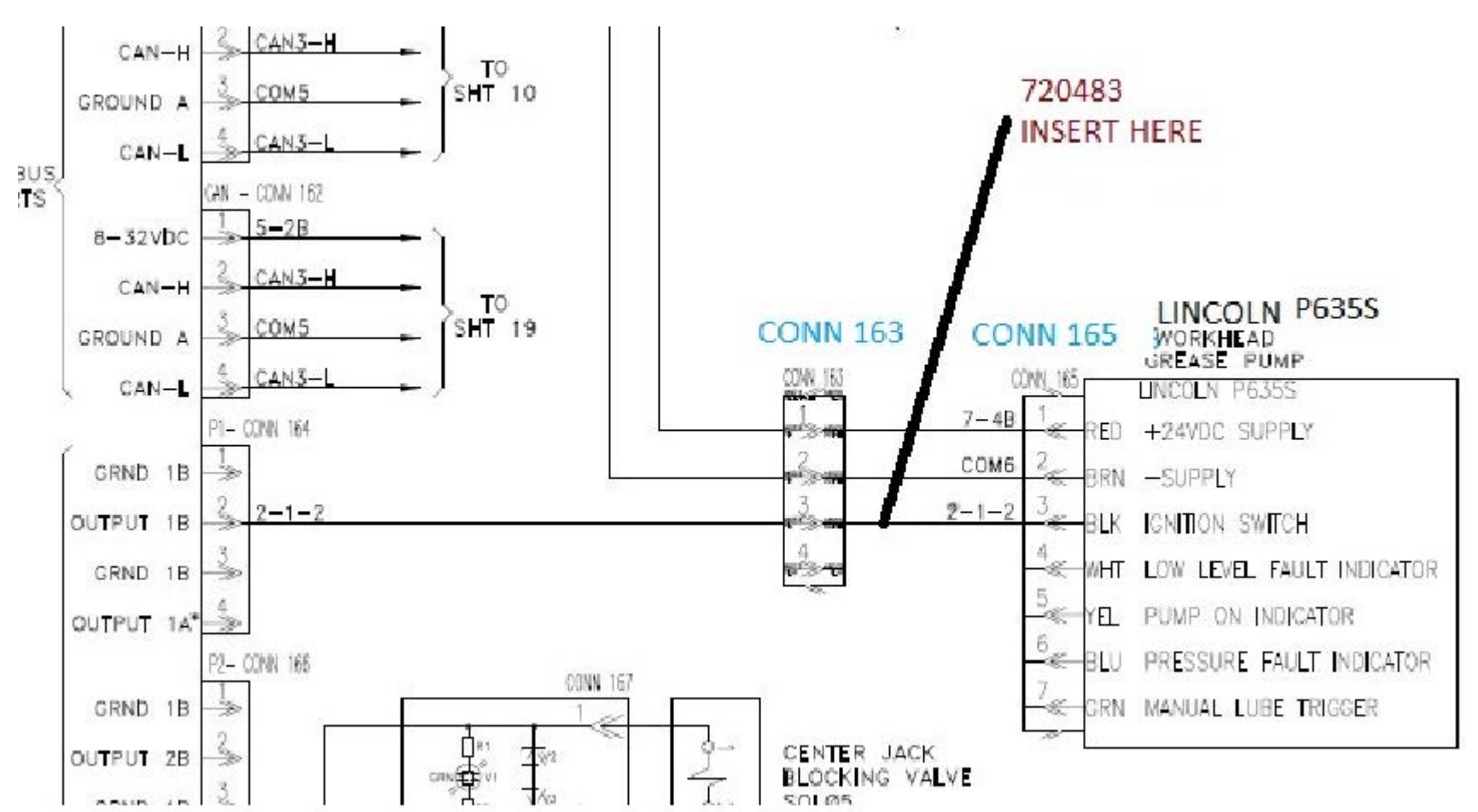
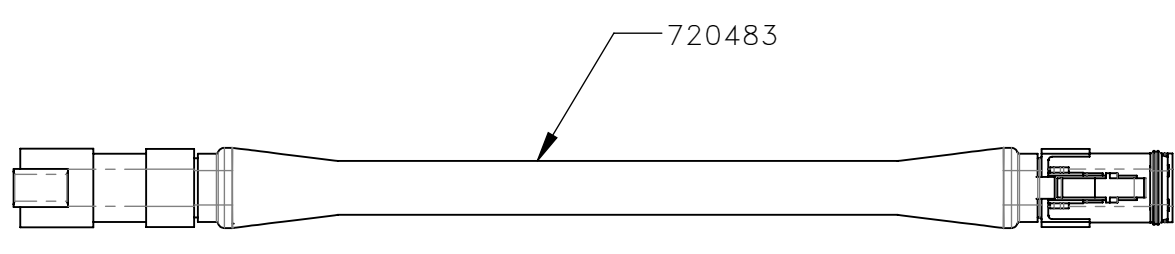


FIG 1.1
LINCOLN GREASER



NO.	QTY	DESCRIPTION	PART NO.
1	REF	NUT, HEX ES: 10-24	456470
2	REF	CABLE, MICRO: 4 PIN DEUTSCH 1 M	473215
3	REF	STANDOFF, MURR BLOCK	720478
4	REF	STANDOFF, MURR BLOCK COVER: ATPI	720479
5	REF	WIRE HARNESS, EXTENTION GREASE PUMP	720483
6	REF	COVER, MURR BLOCK: SINGLE	782404

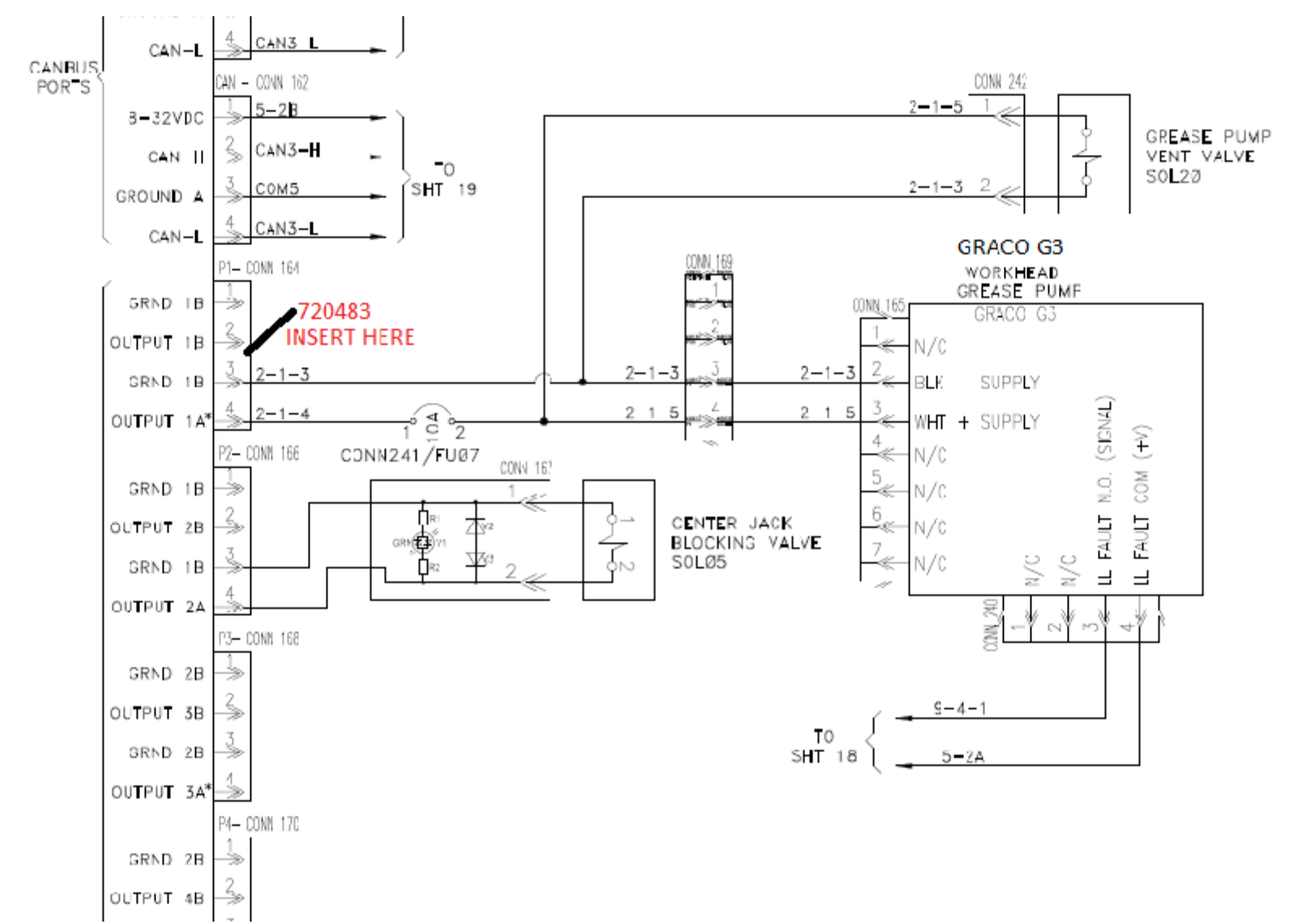
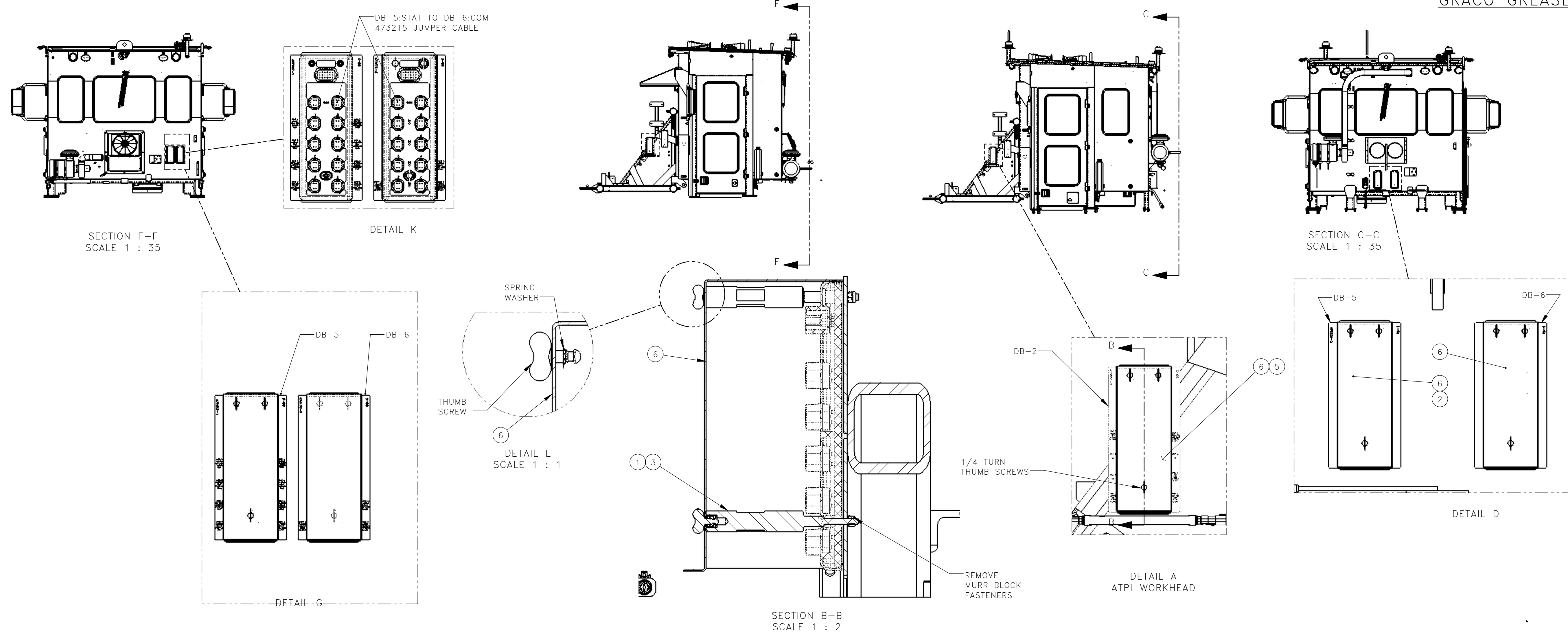


FIG 1.2
GRACO GREASER



REV	EN	DESCRIPTION	DATE	DRN
1	00147	NEW RELEASE	3-23	PR

DIMENSION TOLERANCES UNLESS OTHERWISE SPECIFIED

	LINEAR	ANGULAR	KERF ALLOW.
	.XX=±.03	.XXX=±.010	
	X'=±1"	X.X'=±.5"	

SURFACE FINISH 125/ SMOOTH ALL SHARP EDGES NOT TO EXCEED

THIS PRINT AND ALL INFORMATION WITHIN BELONGS TO RACINE RAILROAD PRODUCTS

RACINE RAILROAD PRODUCTS
RACINE, WISCONSIN USA

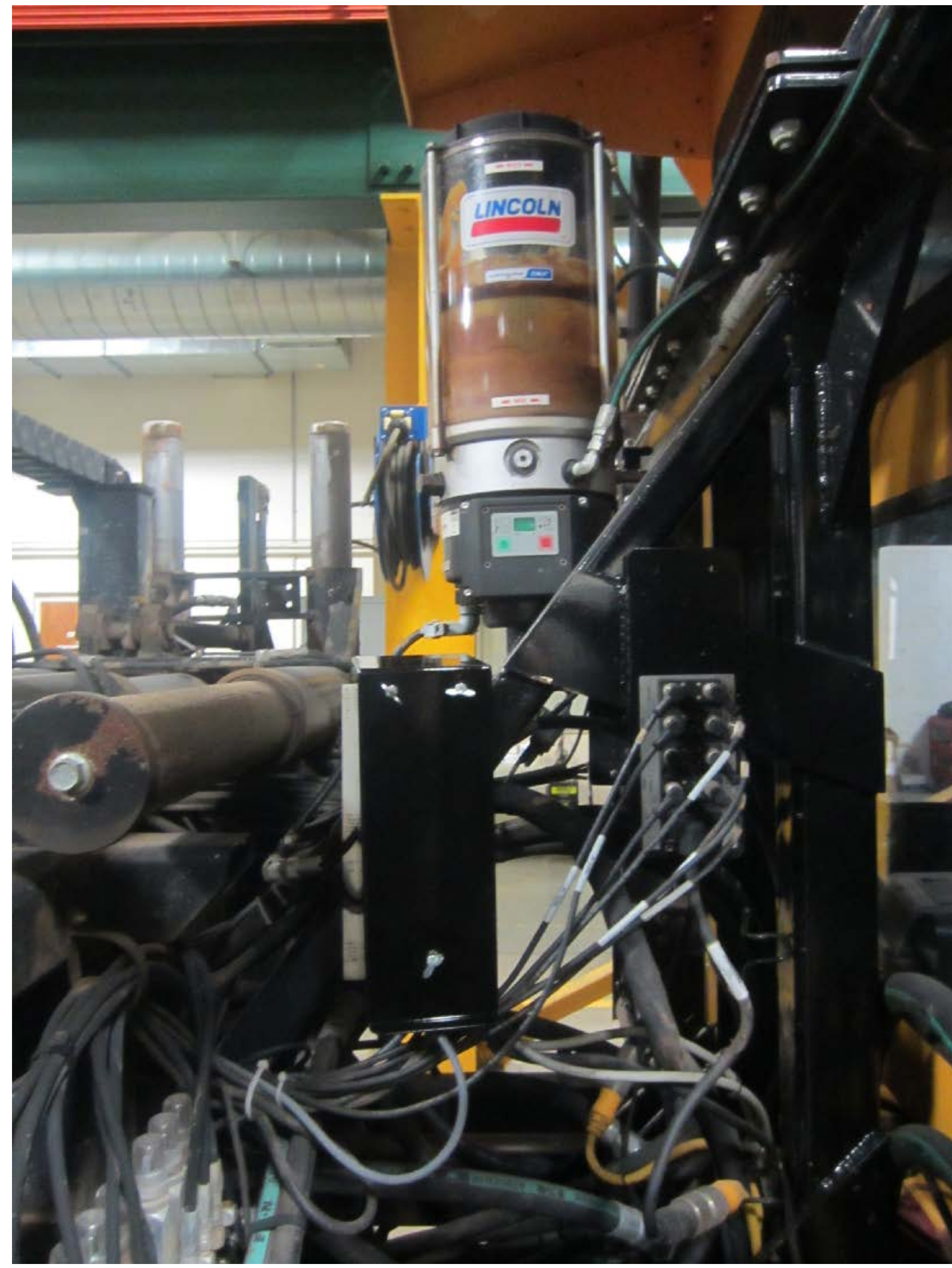
DESCRIPTION
INSTRUCTIONS, MURR BLOCK COVER KIT:
ATPI

MATERIAL TYPE REFERENCE

USED ON	SCALE	DATE
793186	1:4	03-04-23

DRN	WEIGHT (LBS)	JOB NO	SHEET
PR	0.00	RD150003	1 OF 2

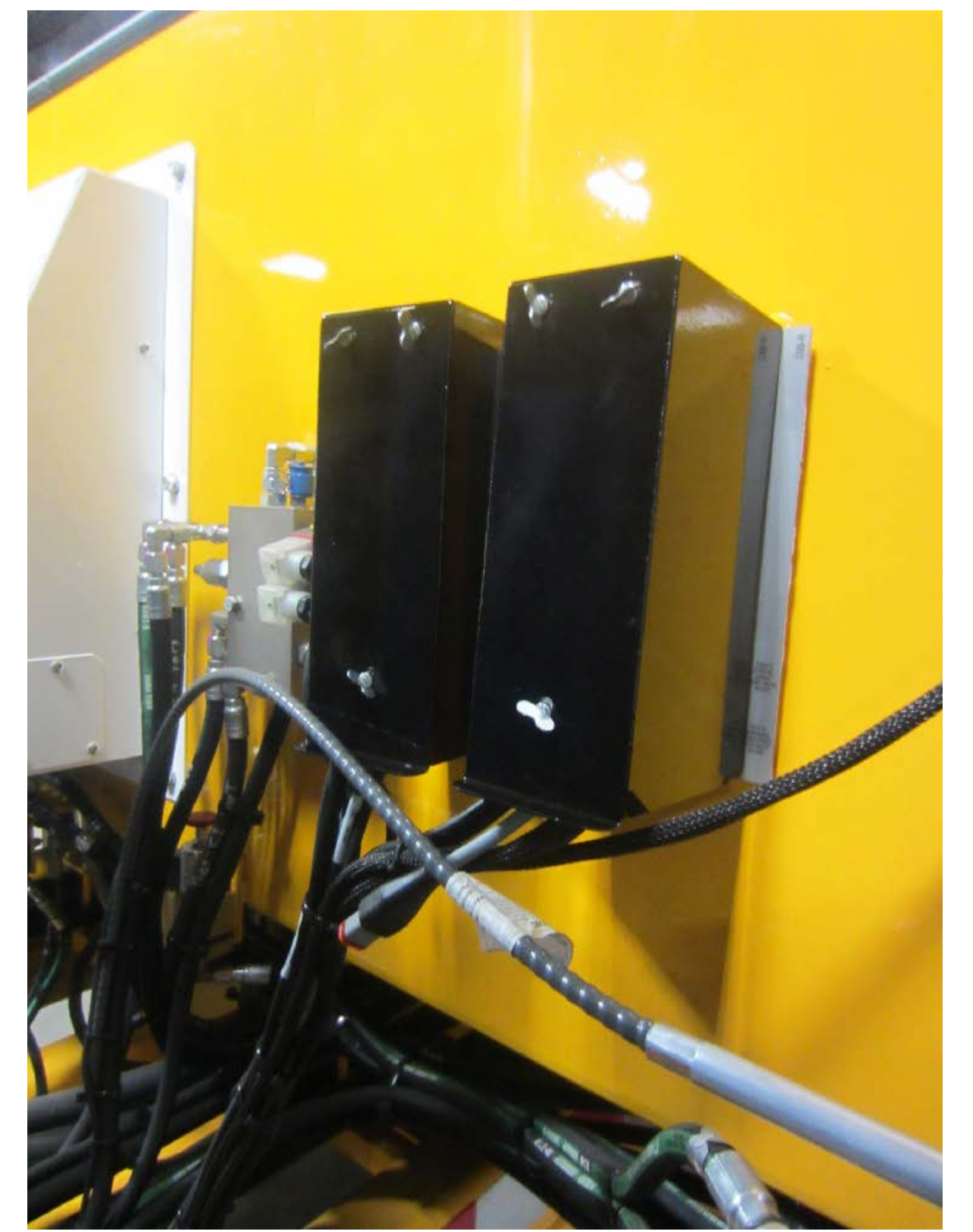
DWG SIZE	CATALOG	DWG NO
D	A	800408



WORKHEAD MURR BLOCK
W/ LINCOLN GREASER



WORKHEAD MURR BLOCK
W/ GREYON GREASER



SHOWN ON THE 3 PERSON CAB
(UNDER THE HVAC FOR THE 5 PERSON SEE SHT 1)
COVER ALIGNED WITH MURR BLOCK
1/4 TURN THUMB LOCK

REV	EN	DESCRIPTION	DATE	DRN
1	00147	NEW RELEASE	3-23	PR
DIMENSION TOLERANCES UNLESS OTHERWISE SPECIFIED				
LINEAR	.XX=±.03	.XXX=±.010	KERF ALLOW.	
ANGULAR	X°=±1°	X.X°=±.5°		
SURFACE FINISH NOT TO EXCEED		125	SMOOTH ALL SHARP EDGES CLEAN ALL WELDS	
THIS PRINT AND ALL INFORMATION WITHIN BELONGS TO RACINE RAILROAD PRODUCTS				
RACINE RAILROAD PRODUCTS RACINE, WISCONSIN USA				
DESCRIPTION				
INSTRUCTIONS, MURR BLOCK COVER KIT- ATPI				
MATERIAL TYPE				
REFERENCE				
USED ON	793186	SCALE	DATE	
		1:4	03-04-23	
DRN	WEIGHT (LBS)	JOB NO	SHEET	
PR	0.00	RD150003	2 OF 2	
DWG SIZE	CATALOG	DWG NO		
D	A		800408	