

THESE INSTRUCTIONS ARE FOR KIT 793187.

INSTALLATION:
ENSURE MACHINE IS POWERED OFF AND LOCK OUT-TAG OUT IS IN PLACE BEFORE PERFORMING THE CONVERSION.

WORK HEAD DB-5 (SEE SECTION C-C)

1. CLIP ZIP-TIES HOLDING CABLES TO THE DB BLOCK SO THE WIRES CAN BE LED TO THE BOTTOM OF BLOCK FOR THE COVER TO FIT (SOME REROUTING MAY BE NEEDED).
2. REMOVE THE THUMB SCREW FROM BAG ATTACHED TO 720478 APPLY THE SPRING WASHER, FOR ALL 3 HOLES IN COVER 782404 (SEE DETAIL J).
3. REMOVE FASTENERS ONE AT A TIME FROM EACH MURR BLOCK THEN INSERT STANDOFF AND NEW NUT INCLUDED IN (720478). DO THIS FOR ALL 3.
4. ALIGN COVER WITH THE MURR BLOCK TOP AND SIDES HOLD AGAINST THE PLACARD.
5. THE COVER THUMB SCREWS ONLY NEED A ¼ TURN TO LOCK (SEE SECTION F-F).
6. SECTION THE CABLES TO EITHER SIDE OF THE MURR BLOCK AND RE-INSTALL ZIP-TIES IF NECESSARY.

OUTER REAR CAB DB-4 (SEE DETAIL D)

7. CLIP ZIP-TIES HOLDING CABLES TO THE DB BLOCKS SO THE WIRES CAN BE LED TO THE BOTTOM OF BLOCK FOR THE COVER TO FIT (SOME REROUTING MAY BE NEEDED).
8. REMOVE THE THUMB SCREW FROM BAG ATTACHED TO 720478 APPLY THE SPRING WASHER, FOR ALL 3 HOLES IN COVER 782404 (SEE DETAIL J).
9. REMOVE FASTENERS ONE AT A TIME FROM EACH MURR BLOCK THEN INSERT STANDOFF AND NEW NUT INCLUDED IN (720478). DO THIS FOR ALL 3.
10. ALIGN COVER WITH THE MURR BLOCK TOP AND SIDES HOLD AGAINST THE PLACARD.
11. THE COVER THUMB SCREWS ONLY NEED A ¼ TURN TO LOCK (SEE SECTION F-F).
12. SECTION THE CABLES TO EITHER SIDE OF THE MURR BLOCK AND RE-INSTALL ZIP-TIES IF NECESSARY.

OUTER REAR CAB DB-2 & DB-3 (SEE SECTION A-A)

13. CLIP ZIP-TIES HOLDING CABLES TO THE DB'S BLOCKS SO THE WIRES CAN BE LEAD TO THE BOTTOM OF BLOCK FOR THE COVER TO FIT (SOME REROUTING MAY BE NEEDED).
14. CHANGE CABLES IN FIG 1.1 DB-2 AS DIRECTED FOR CABLES TO REACH FROM LOWERED BI-FOLD COVER.
15. DRILL 2X .406 DIA HOLES IN THE TOP WELDMENT FOR ANGLE SUPPORT (SEE DETAIL B).
16. DRILL 1X .438 HOLE IN THE BOTTOM OF WELDMENT FOR QUICK RELEASE PIN (SEE SECTION A-A).
17. FROM ASSEMBLY (720480) BOLT THE ANGLE SUPPORT TO THE UPPER WELDMENT (SEE DETAIL B).
18. ADJUST COVER BOLTS BY PLACING THE UPPER BI-FOLD ALL THE WAY UP AGAINST THE TOP DB PLACARD TIGHT BOLTS (SEE SECTION A-A).
19. COVER QUICK RELEASE PIN SHOULD ALIGN WITH LOWER HOLE (SEE SECTION A-A).
20. SECTION THE CABLES TO EITHER SIDE OF THE MURR BLOCKS AND RE-INSTALL ZIP-TIES IF NECESSARY.

NOTE: SHEET 2 ARE ACTUAL PICTURES OF COVER PLACEMENTS

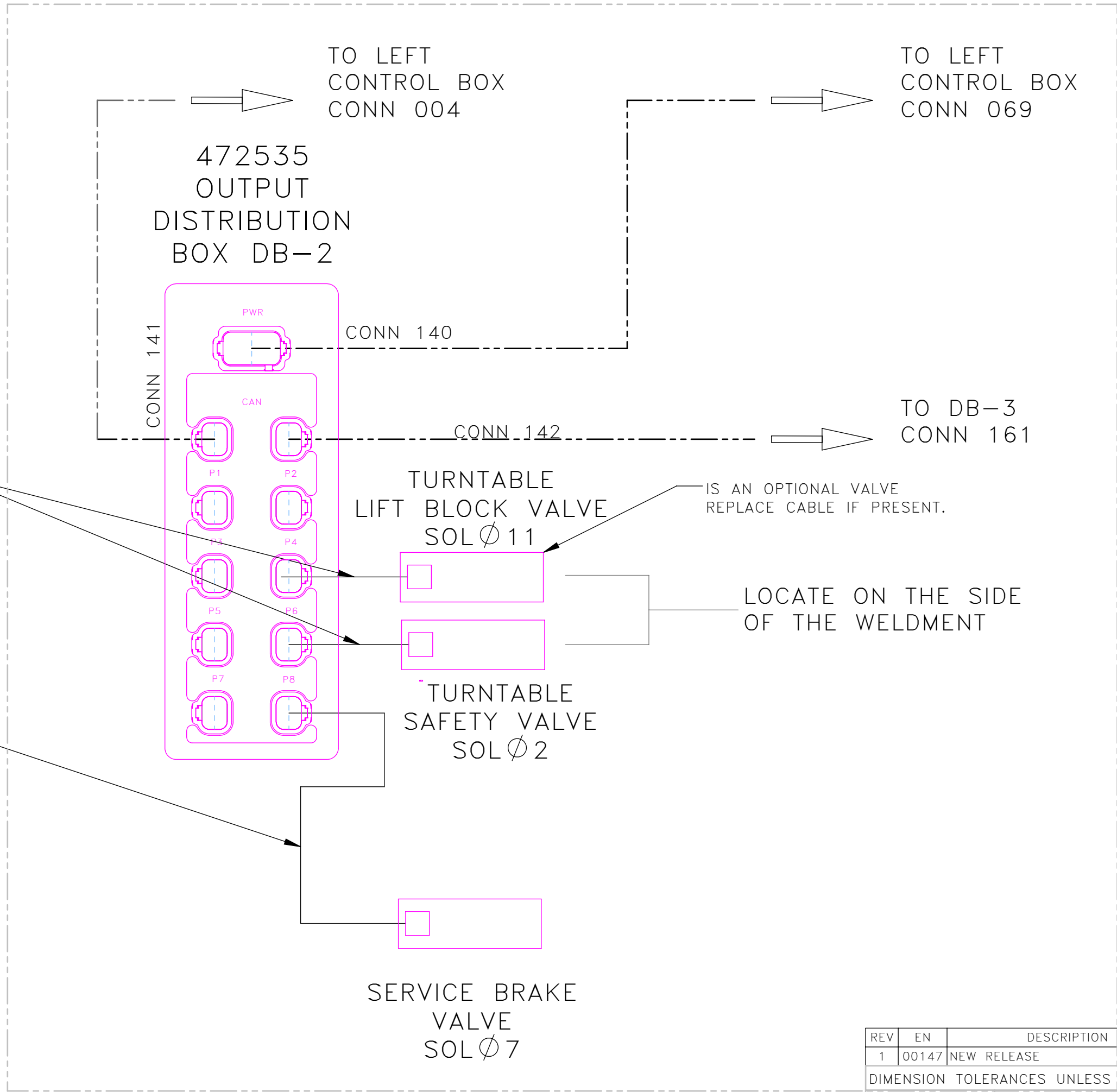
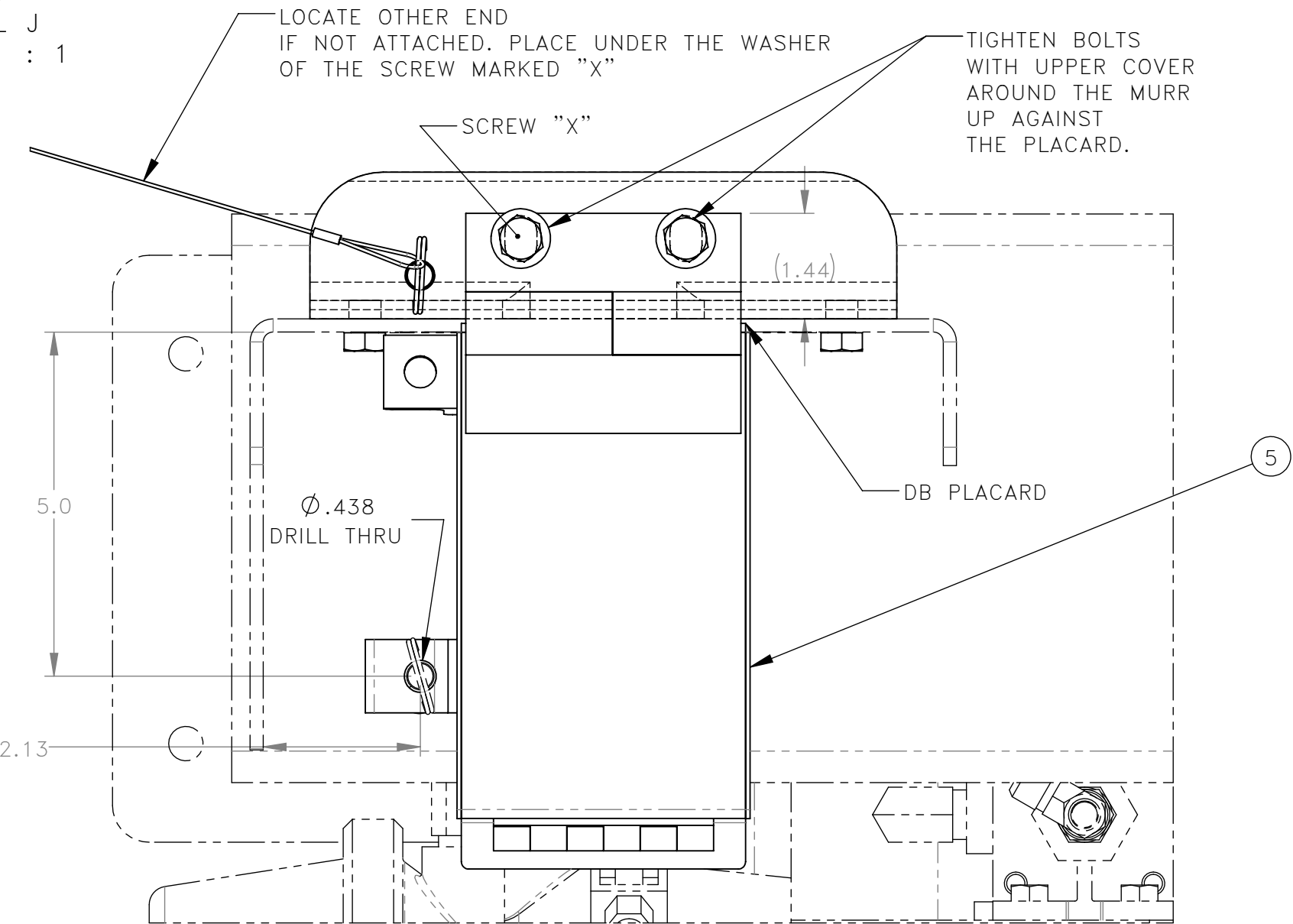
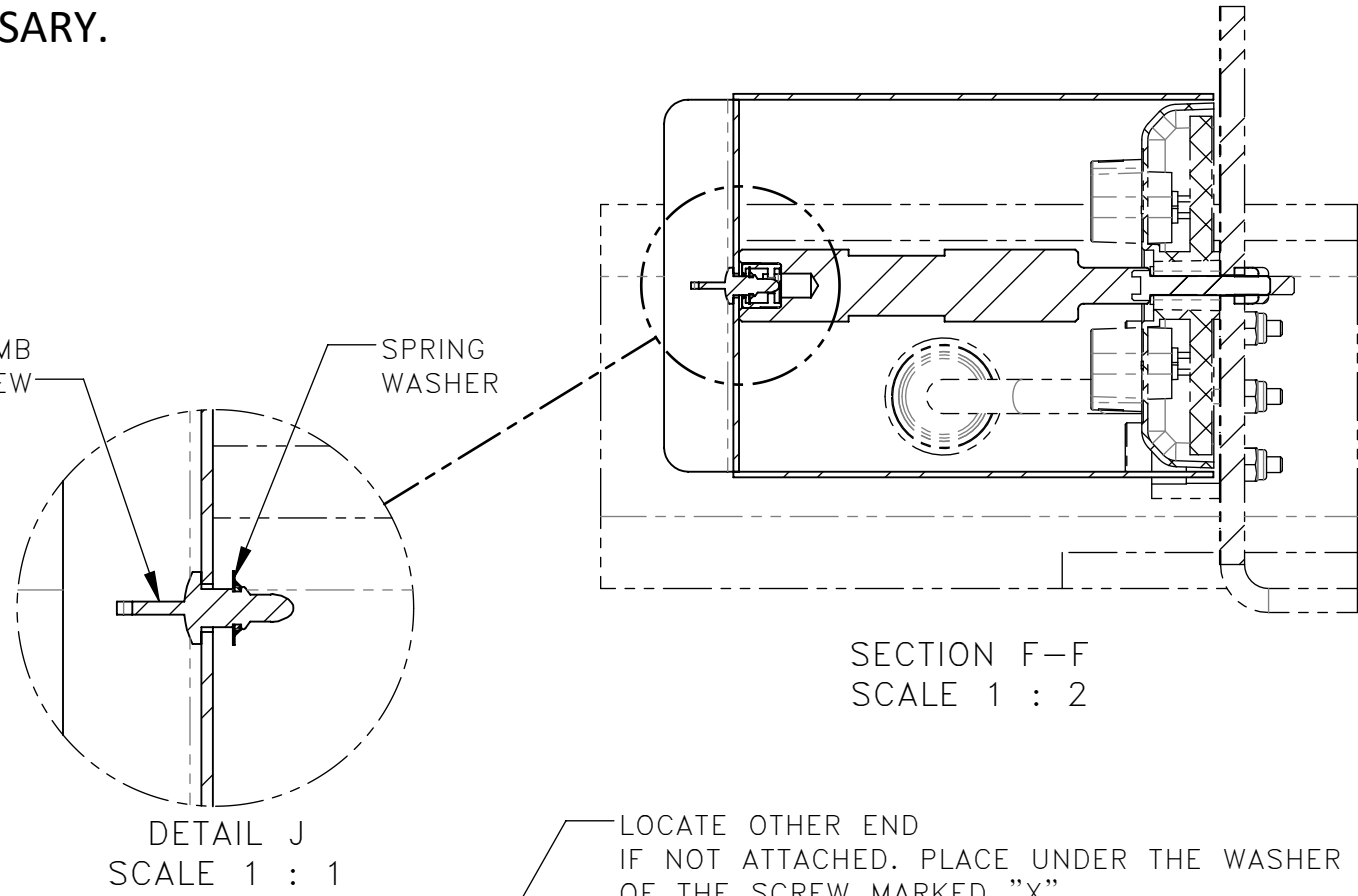
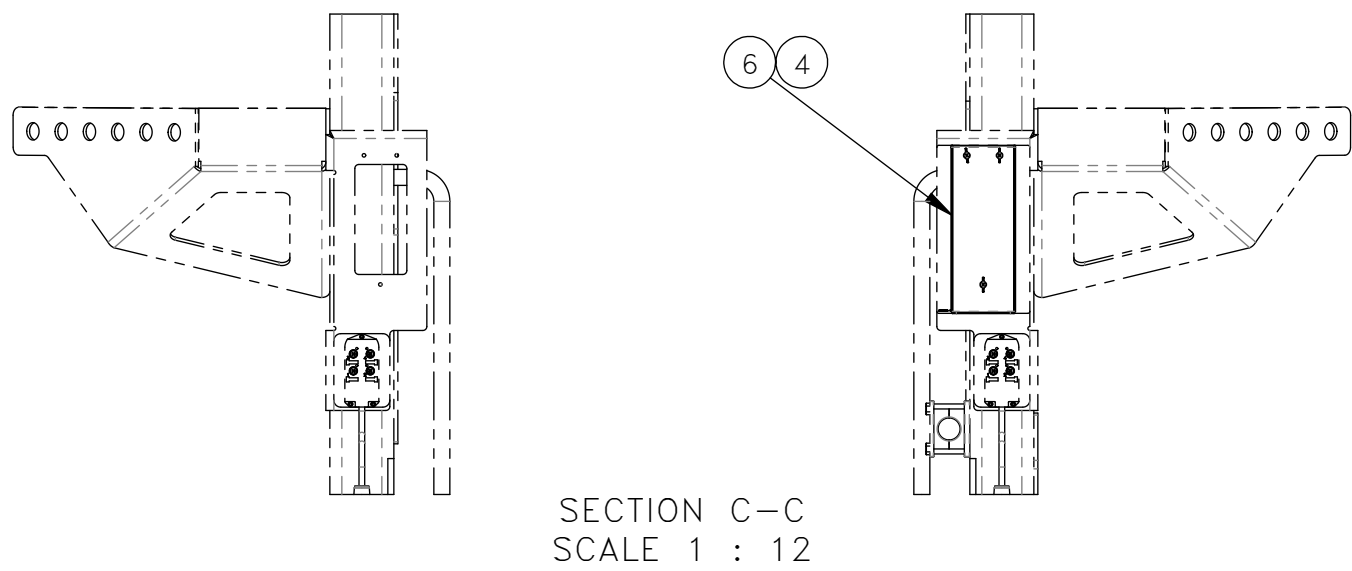
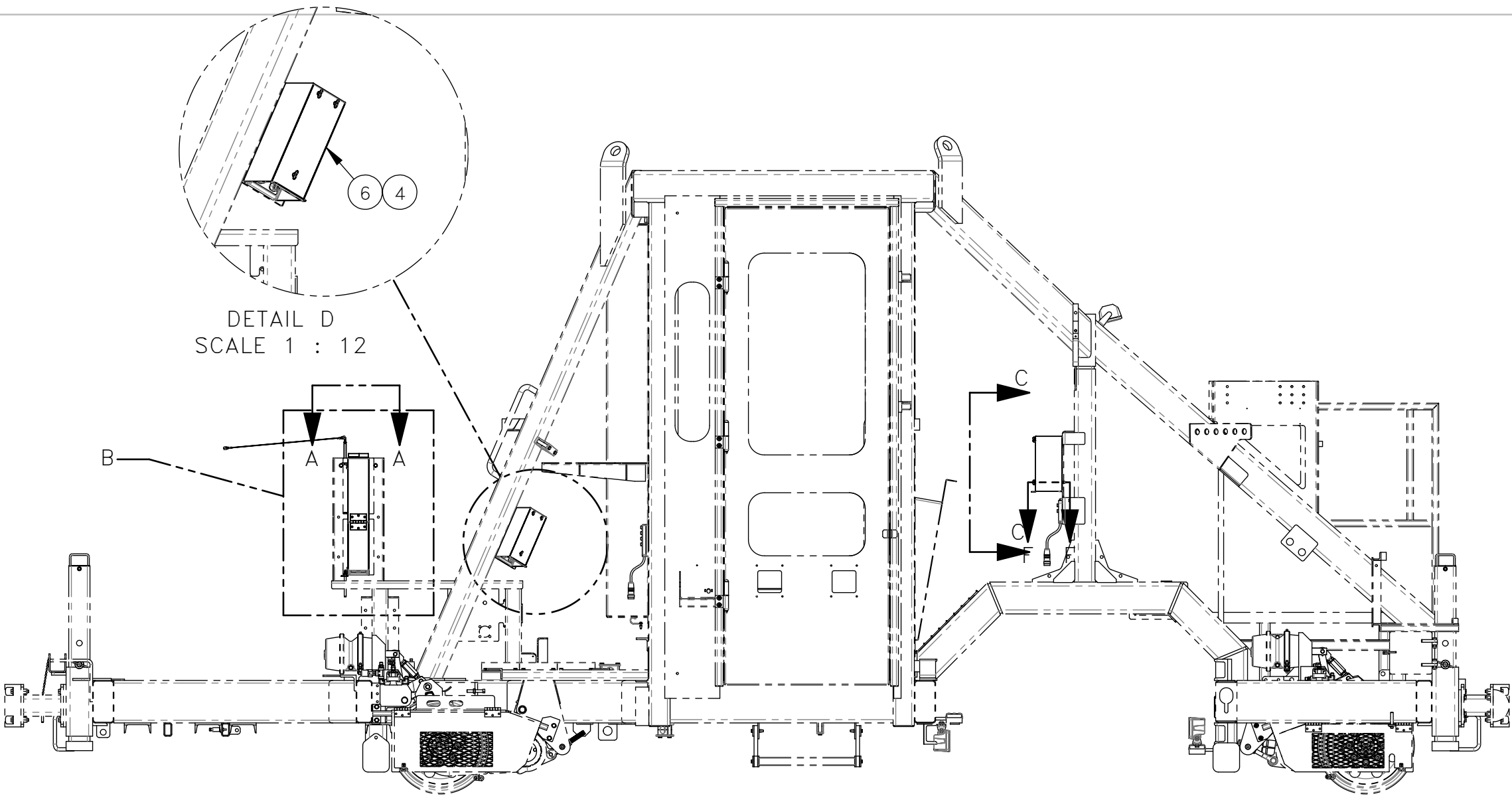
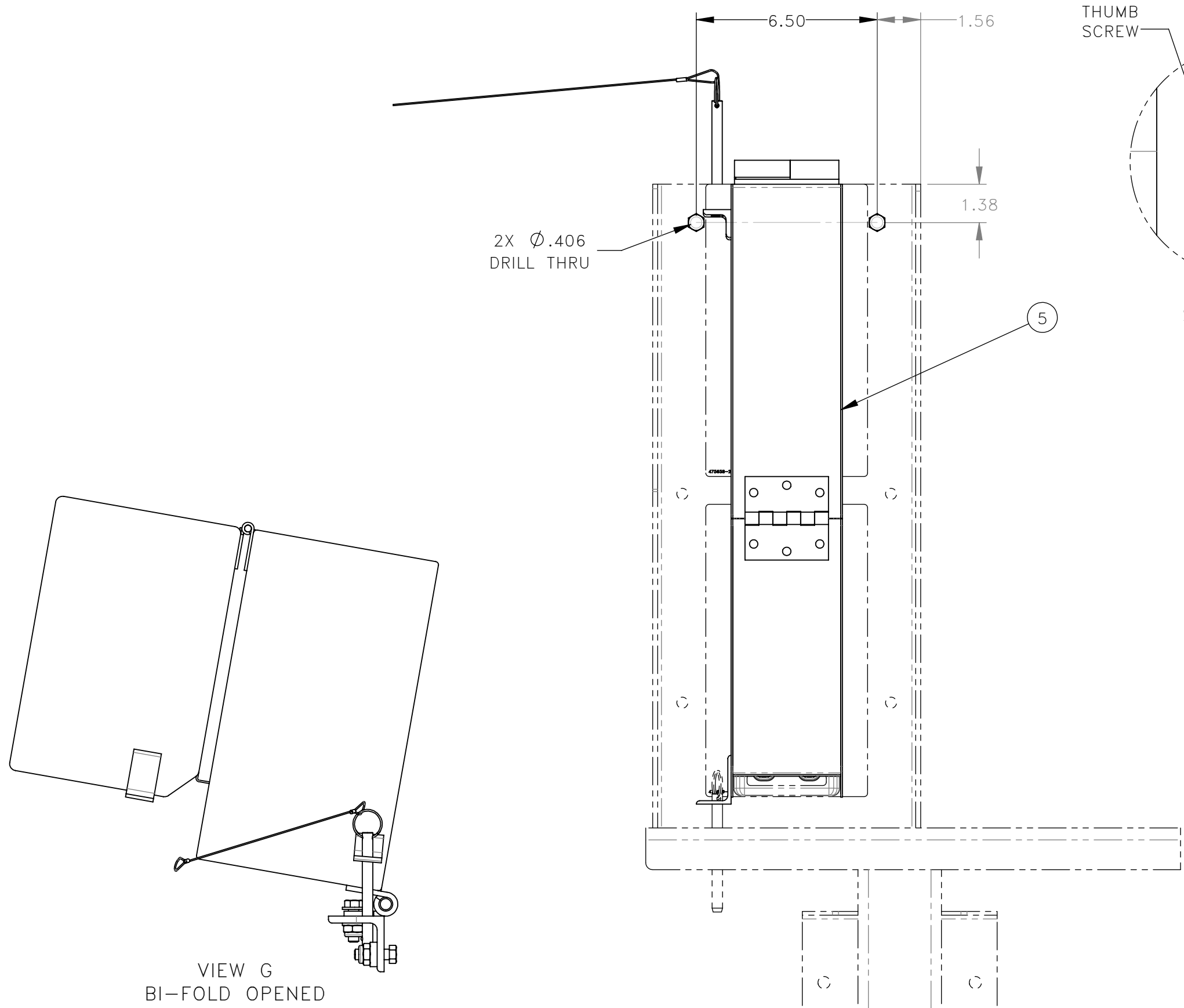
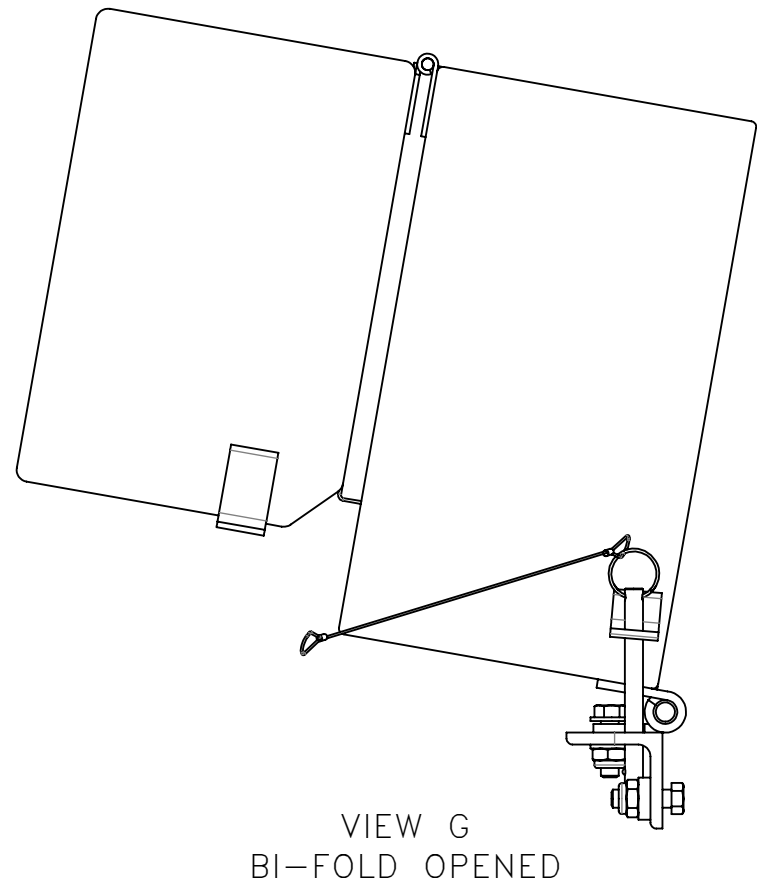


FIG 1.1
DB-2



DETAIL B
SCALE 1 : 4



VIEW G
BI-FOLD OPENED

REV	EN	DESCRIPTION		DATE	DRN
1	00147	NEW RELEASE		6-23	PR
DIMENSION TOLERANCES UNLESS OTHERWISE SPECIFIED					
LINEAR		.XX=±.03	.XXX=±.010	KERF ALLOW.	
ANGULAR		X°=±1°	X.X°=±.5°		
SURFACE FINISH		125/✓	SMOOTH ALL SHARP EDGES CLEAN ALL WELDS		
NOT TO EXCEED					
THIS PRINT AND ALL INFORMATION WITHIN BELONGS TO RACINE RAILROAD PRODUCTS					
RACINE RAILROAD PRODUCTS					
RACINE, WISCONSIN USA					
DESCRIPTION					
INSTRUCTIONS, MURR BLOCK COVER KIT: DCA, DAA, DAS					
MATERIAL TYPE					
REFERENCE					
USED ON		793187	SCALE	DATE	
			1:48	04-26-23	
DRN	PR	WEIGHT (LBS)	JOB NO	SHEET	
		0.00	RD190005	1 OF 2	
DWG SIZE		CATALOG	DWG NO		
D		A		800409	



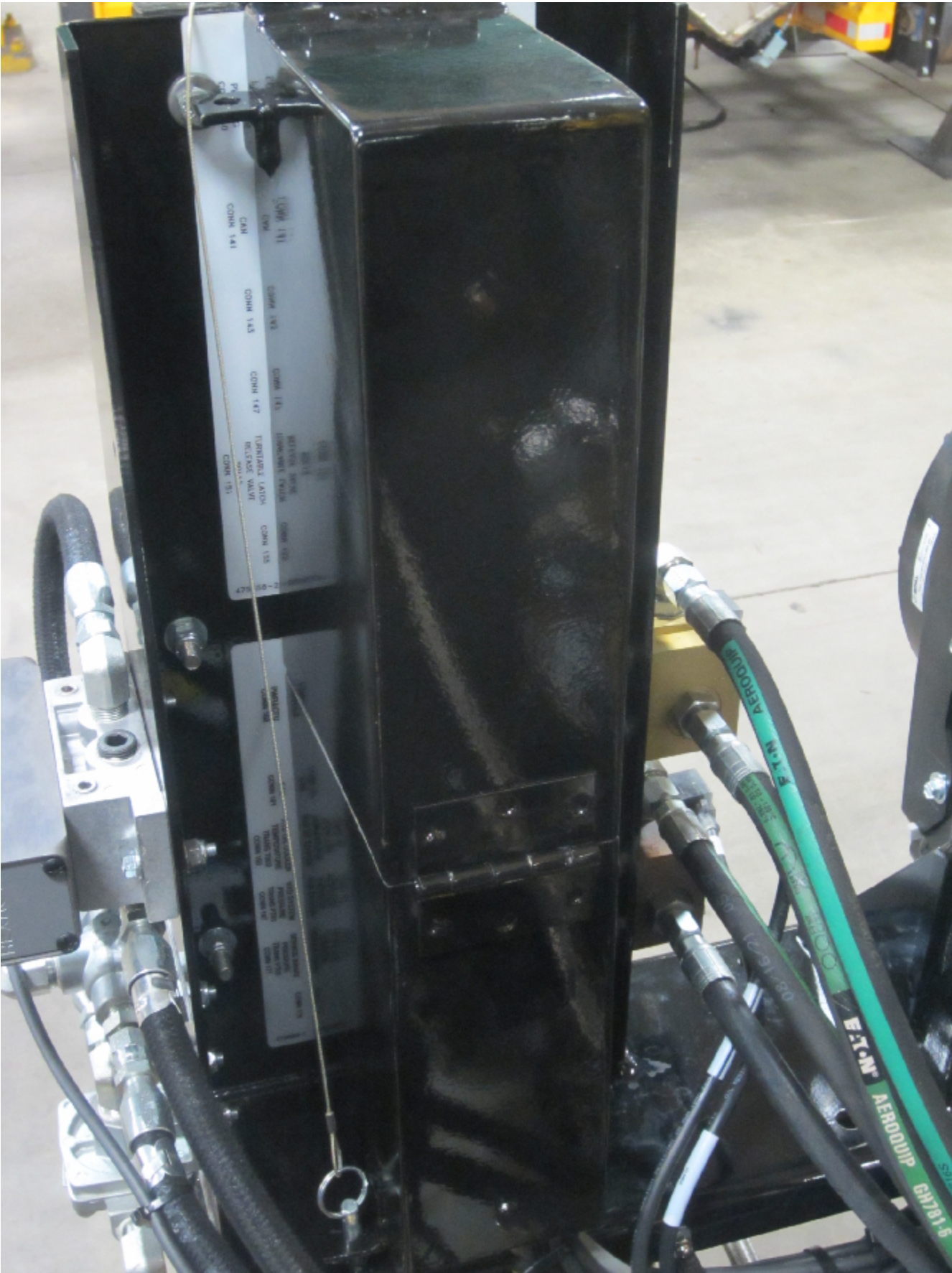
STANDOFF IN PLACE



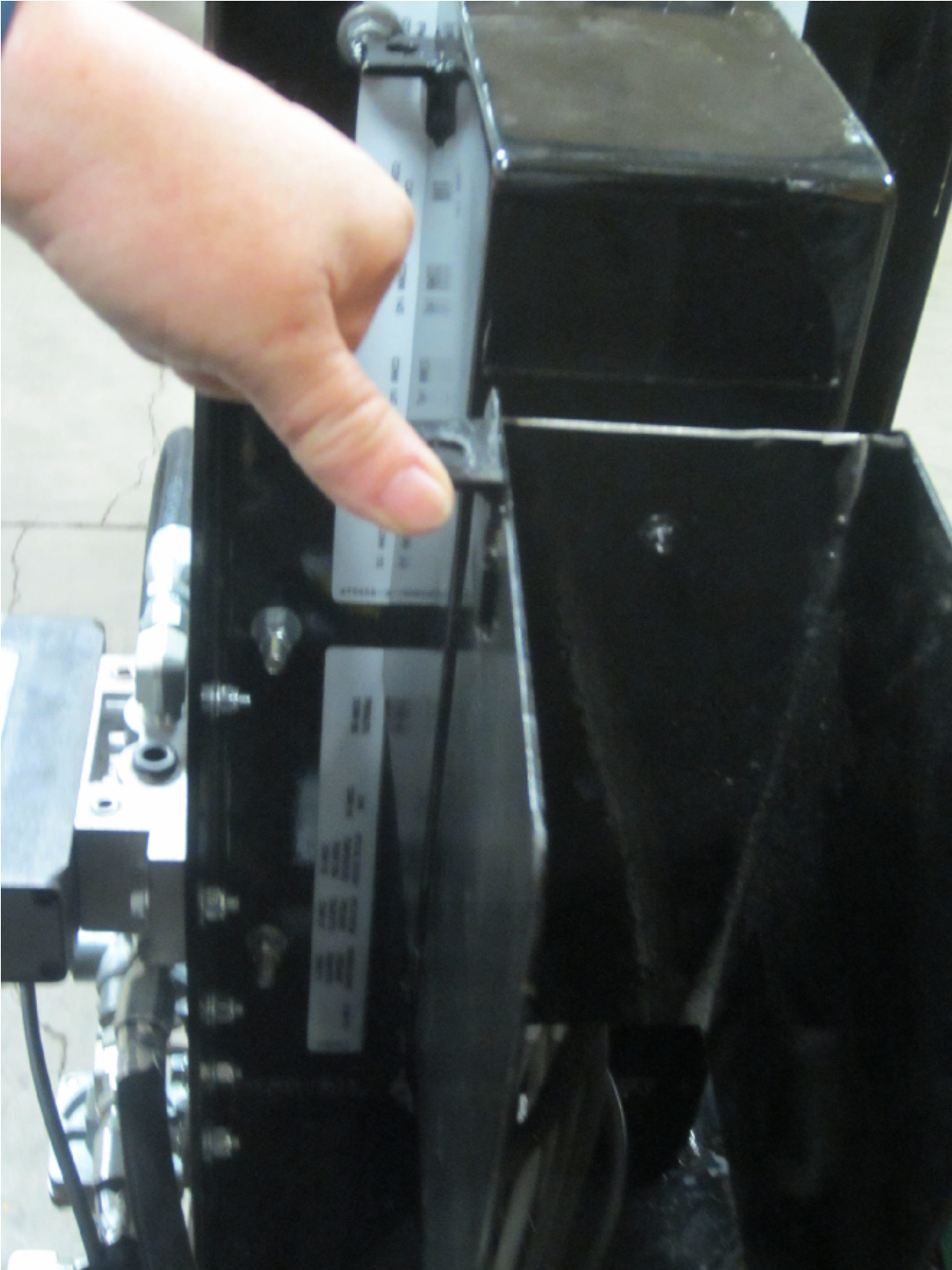
COVER ALIGNED WITH MURR BLOCK
1/4 TURN THUMB LOCK



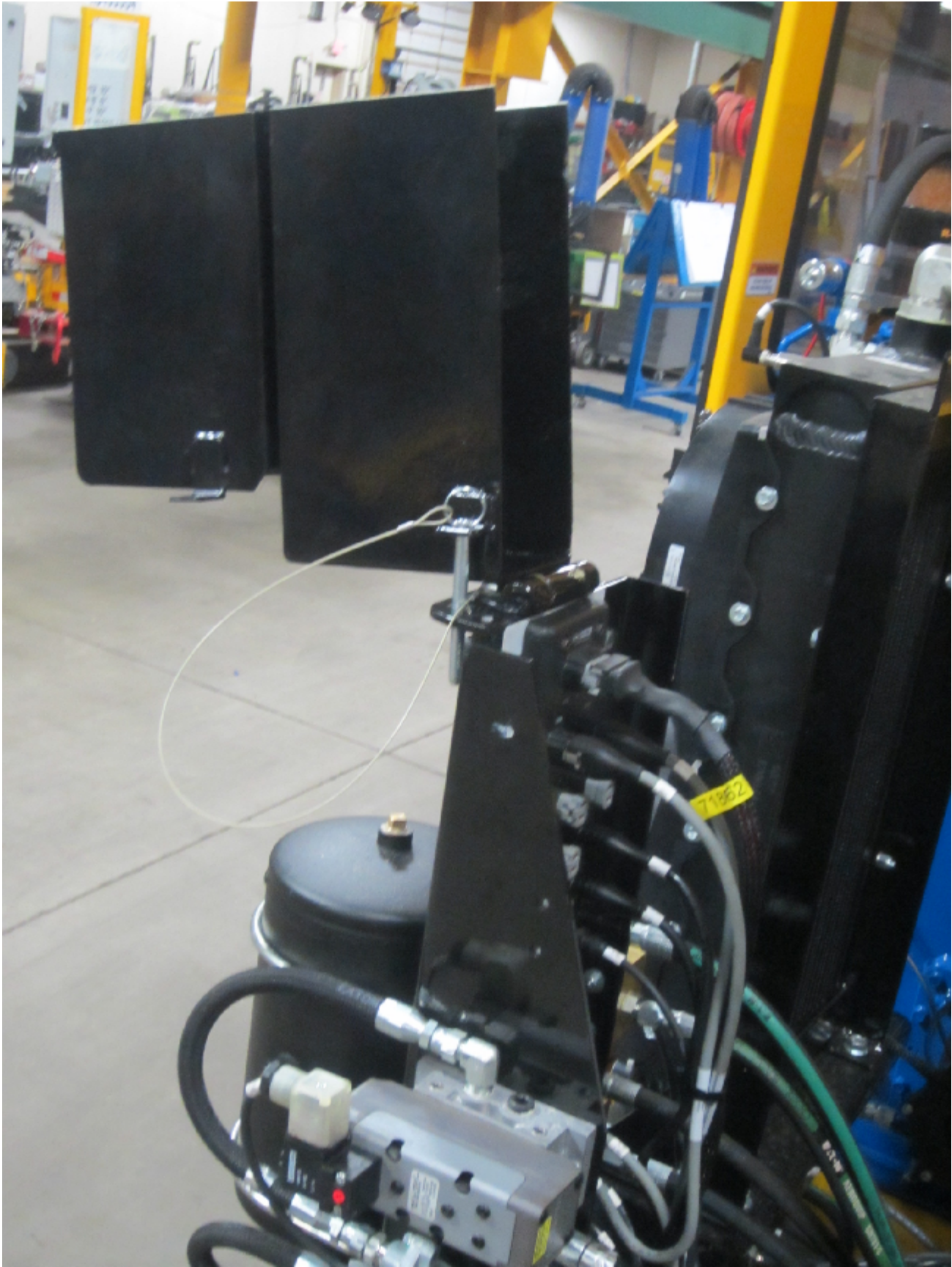
COVER ALIGNED WITH MURR BLOCK
1/4 TURN THUMB LOCK



COVER CLOSE POSITION



BI-FOLD HALF OPEN POSITION



BI-FOLD LOCKED OPEN POSITION

REV	EN	DESCRIPTION	DATE	DRN
1	00147	NEW RELEASE	6-23	PR
DIMENSION TOLERANCES UNLESS OTHERWISE SPECIFIED				
LINEAR		.XX=±.03	.XXX=±.010	KERF ALLOW.
ANGULAR		X°=±1°	X.X°=±.5°	
SURFACE FINISH		125/	SMOOTH ALL SHARP EDGES	
NOT TO EXCEED			CLEAN ALL WELDS	
THIS PRINT AND ALL INFORMATION WITHIN BELONGS TO RACINE RAILROAD PRODUCTS				
RACINE RAILROAD PRODUCTS				
RACINE, WISCONSIN USA				
DESCRIPTION				
INSTRUCTIONS, MURR BLOCK COVER KIT: DCA, DAA, DAS				
MATERIAL TYPE				
REFERENCE				
USED ON		793187	SCALE	DATE
			1:48	04-26-23
DRN		WEIGHT (LBS)	JOB NO	SHEET
PR		0.00	RD190005	2 OF 2
DWG SIZE		CATALOG	DWG NO	
D		A		800409