

INSTALLATION:
 ENSURE MACHINE IS POWERED OFF AND LOCK OUT-TAG OUT IS IN PLACE BEFORE PERFORMING THE CONVERSION.

WORK HEAD DB-5 & DB-6 (SEE SECTION C-C)

1. CLIP ZIP-TIES HOLDING CABLES TO THE DB BLOCK SO THE WIRES CAN BE LED TO THE BOTTOM OF BLOCK FOR THE COVER TO FIT (SOME REROUTING MAY BE NEEDED).
2. REMOVE THE THUMB SCREW FROM BAG ATTACHED TO 720478 APPLY THE SPRING WASHER, FOR ALL 3 HOLES IN COVER 782404 (SEE DETAIL J).
3. REMOVE FASTENERS ONE AT A TIME FROM EACH MURR BLOCK THEN INSERT STANDOFF AND NEW NUT INCLUDED IN (720478). DO THIS FOR ALL 3.
4. ALIGN COVER WITH THE MURR BLOCK TOP AND SIDES HOLD AGAINST THE PLACARD.
5. THE COVER THUMB SCREWS ONLY NEED A ¼ TURN TO LOCK (SEE SECTION F-F).
6. SECTION THE CABLES TO EITHER SIDE OF THE MURR BLOCK AND RE-INSTALL ZIP-TIES IF NECESSARY.

OUTER REAR CAB DB-4 (SEE DETAIL D)

7. CLIP ZIP-TIES HOLDING CABLES TO THE DB BLOCKS SO THE WIRES CAN BE LED TO THE BOTTOM OF BLOCK FOR THE COVER TO FIT (SOME REROUTING MAY BE NEEDED).
8. REMOVE THE THUMB SCREW FROM BAG ATTACHED TO 720478 APPLY THE SPRING WASHER, FOR ALL 3 HOLES IN COVER 782404 (SEE DETAIL J).
9. REMOVE FASTENERS ONE AT A TIME FROM EACH MURR BLOCK THEN INSERT STANDOFF AND NEW NUT INCLUDED IN (720478). DO THIS FOR ALL 3.
10. ALIGN COVER WITH THE MURR BLOCK TOP AND SIDES HOLD AGAINST THE PLACARD.
11. THE COVER THUMB SCREWS ONLY NEED A ¼ TURN TO LOCK (SEE SECTION F-F).
12. SECTION THE CABLES TO EITHER SIDE OF THE MURR BLOCK AND RE-INSTALL ZIP-TIES IF NECESSARY.

OUTER REAR CAB DB-2 & DB-3 (SEE SECTION A-A)

13. CLIP ZIP-TIES HOLDING CABLES TO THE DB'S BLOCKS SO THE WIRES CAN BE LEAD TO THE BOTTOM OF BLOCK FOR THE COVER TO FIT (SOME REROUTING MAY BE NEEDED).
14. CHANGE CABLES IN FIG 1.1 DB-2 AS DIRECTED FOR CABLES TO REACH FROM LOWERED BI-FOLD COVER.
15. DRILL 2X .406 DIA HOLES IN THE TOP WELDMENT FOR ANGLE SUPPORT (SEE DETAIL B).
16. DRILL 1X .438 HOLE IN THE BOTTOM OF WELDMENT FOR QUICK RELEASE PIN (SEE SECTION A-A).
17. FROM ASSEMBLY (720480) BOLT THE ANGLE SUPPORT TO THE UPPER WELDMENT (SEE DETAIL B).
18. ADJUST COVER BOLTS BY PLACING THE UPPER BI-FOLD ALL THE WAY UP AGAINST THE TOP DB PLACARD TIGHT BOLTS (SEE SECTION A-A).
19. COVER QUICK RELEASE PIN SHOULD ALIGN WITH LOWER HOLE (SEE SECTION A-A).
20. SECTION THE CABLES TO EITHER SIDE OF THE MURR BLOCKS AND RE-INSTALL ZIP-TIES IF NECESSARY.

NOTE: SHEET 2 ARE ACTUAL PICTURES OF COVER PLACEMENTS

NO.	QTY	DESCRIPTION	PART NO.
1	REF	NUT, HEX ES: 10-24	456470
2	REF	CABLE, MICRO: 4 PIN DEUTSCH X DIN 43650 A 2.5 M	474096
3	REF	CABLE, MICRO: 4 PIN DEUTSCH X DIN 43650 A 3 M	475354
4	REF	STANDOFF, MURR BLOCK	720478
5	REF	COVER, MURR BLOCK: BI-FOLD	720480
6	REF	COVER, MURR BLOCK: SINGLE	782404

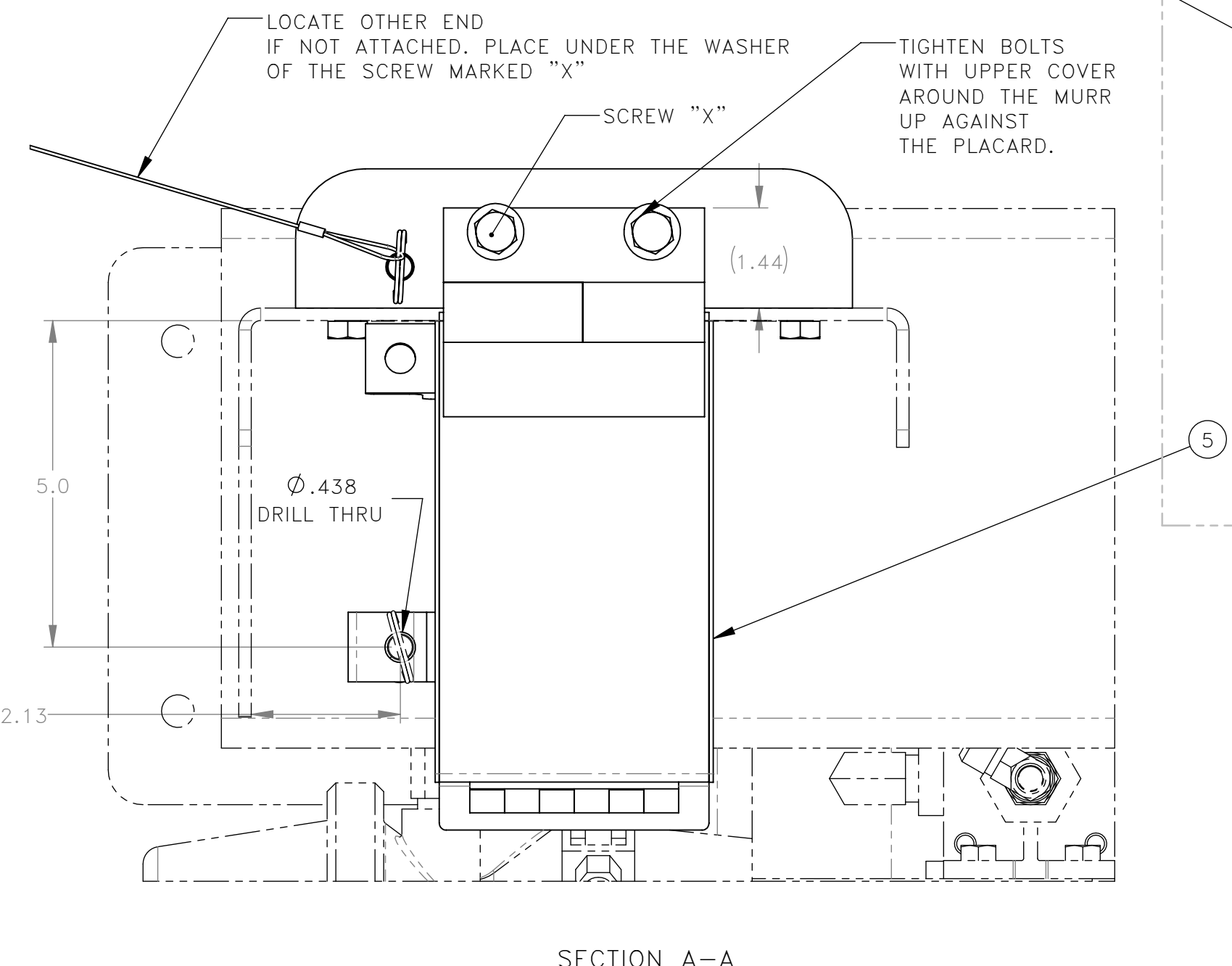
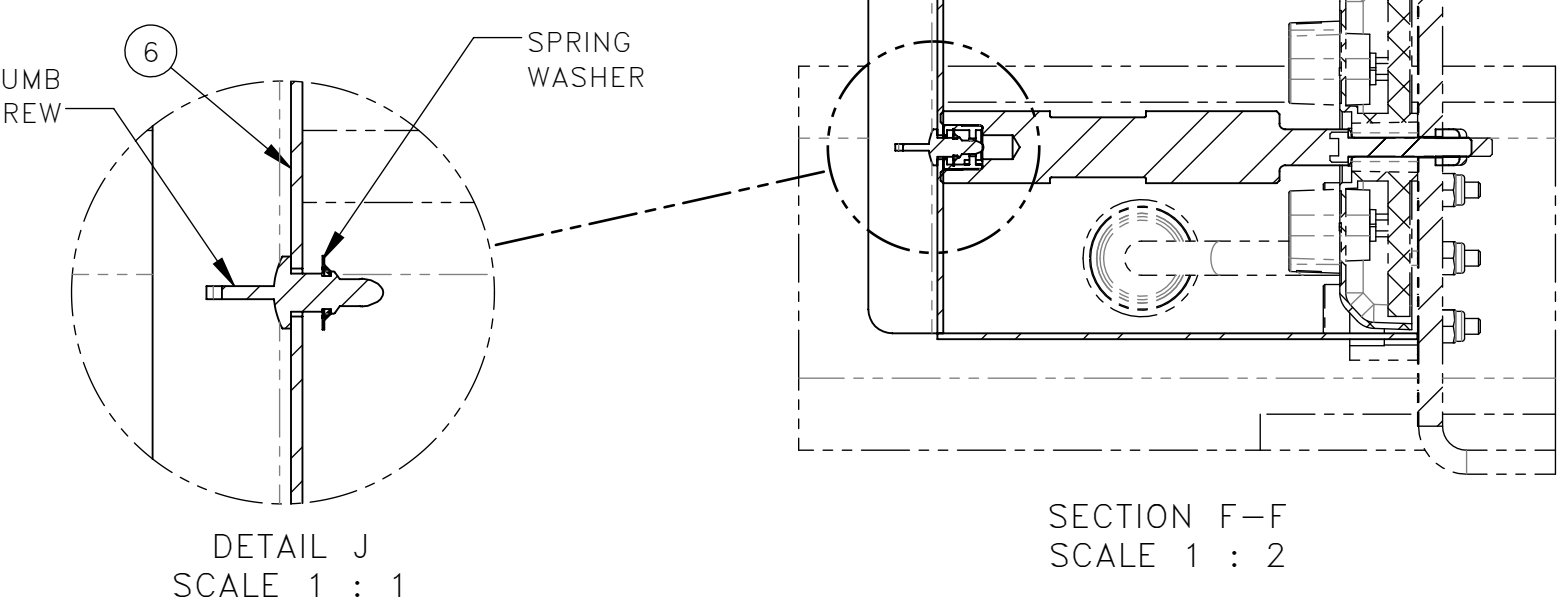
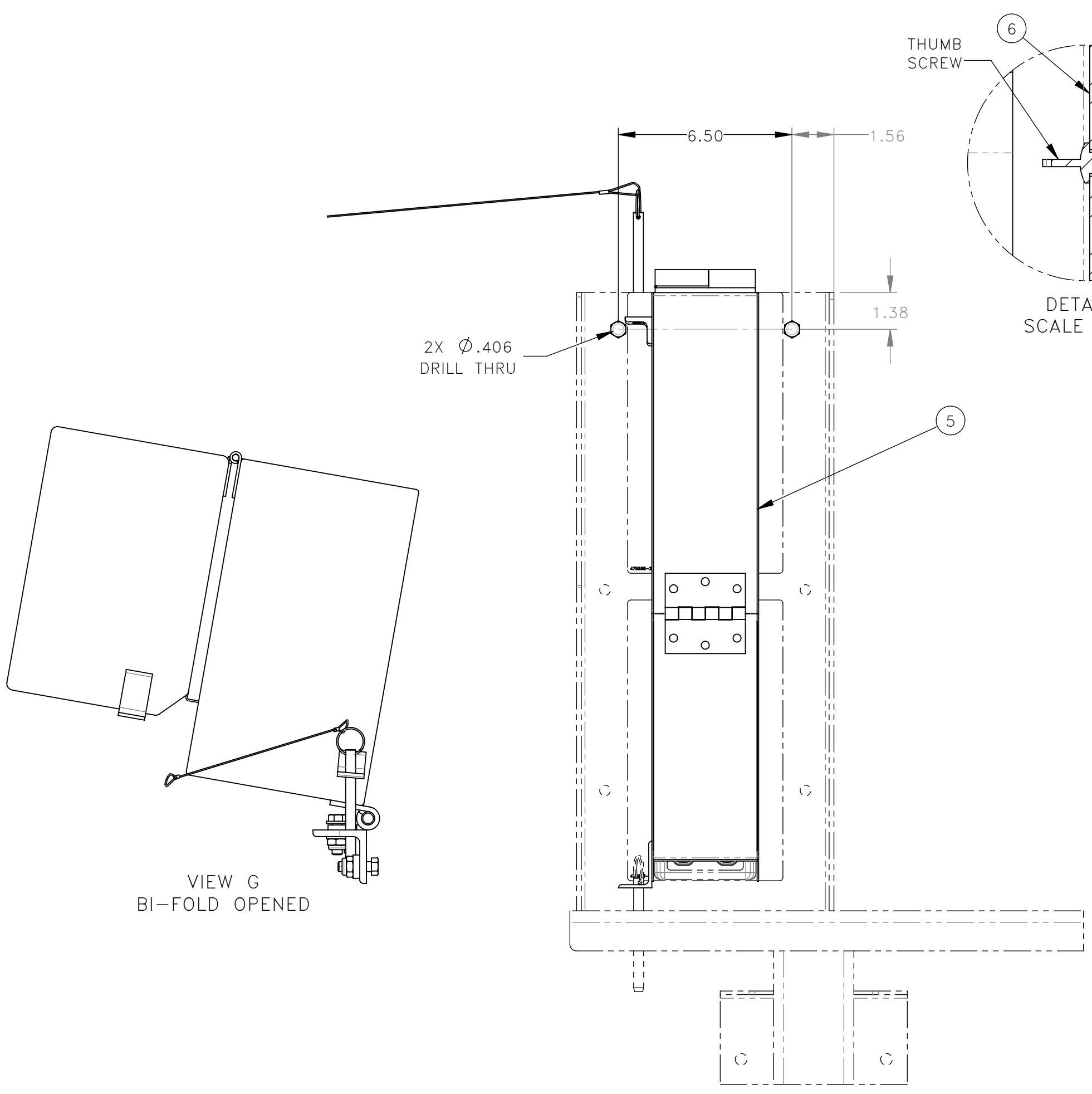
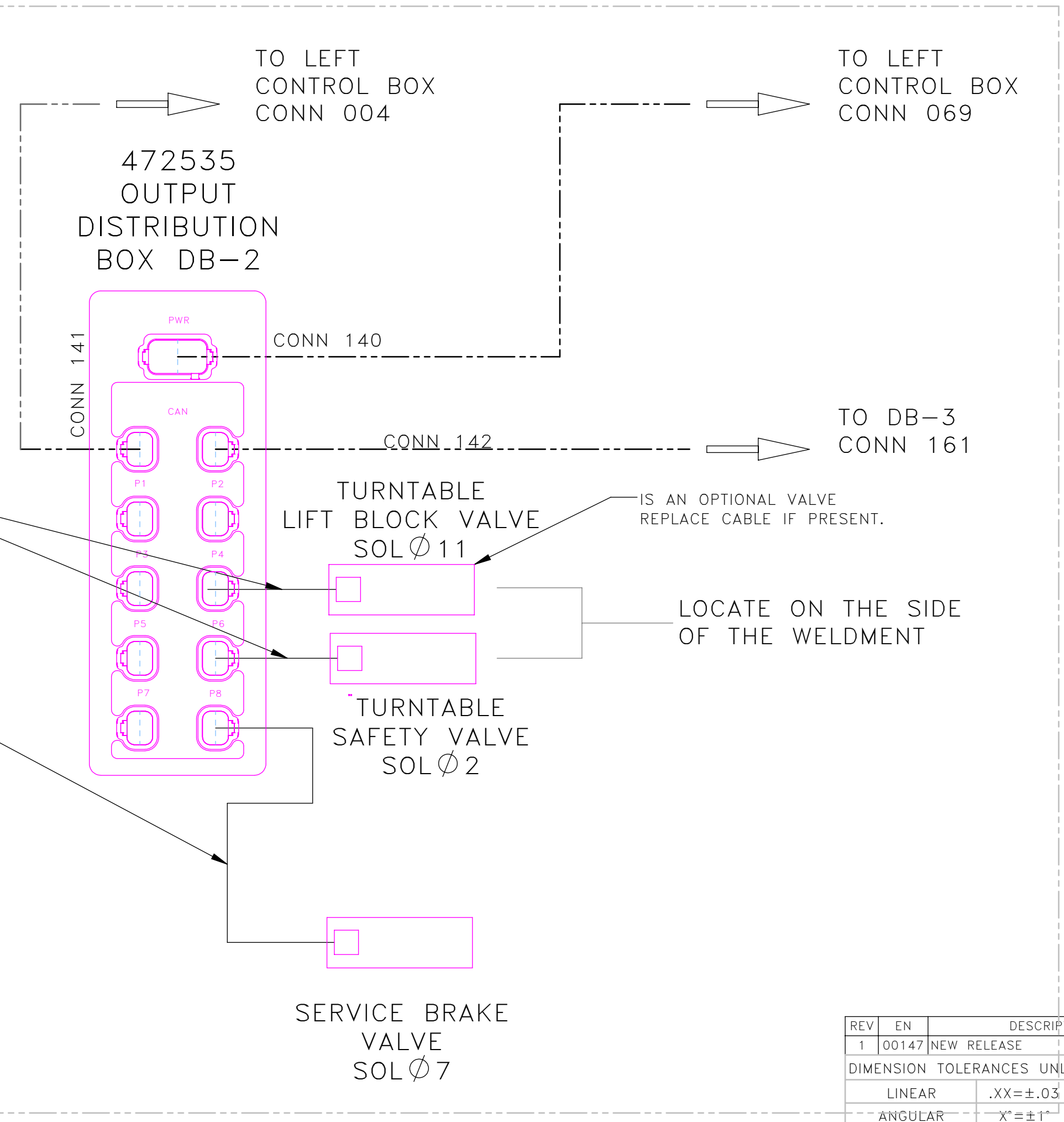
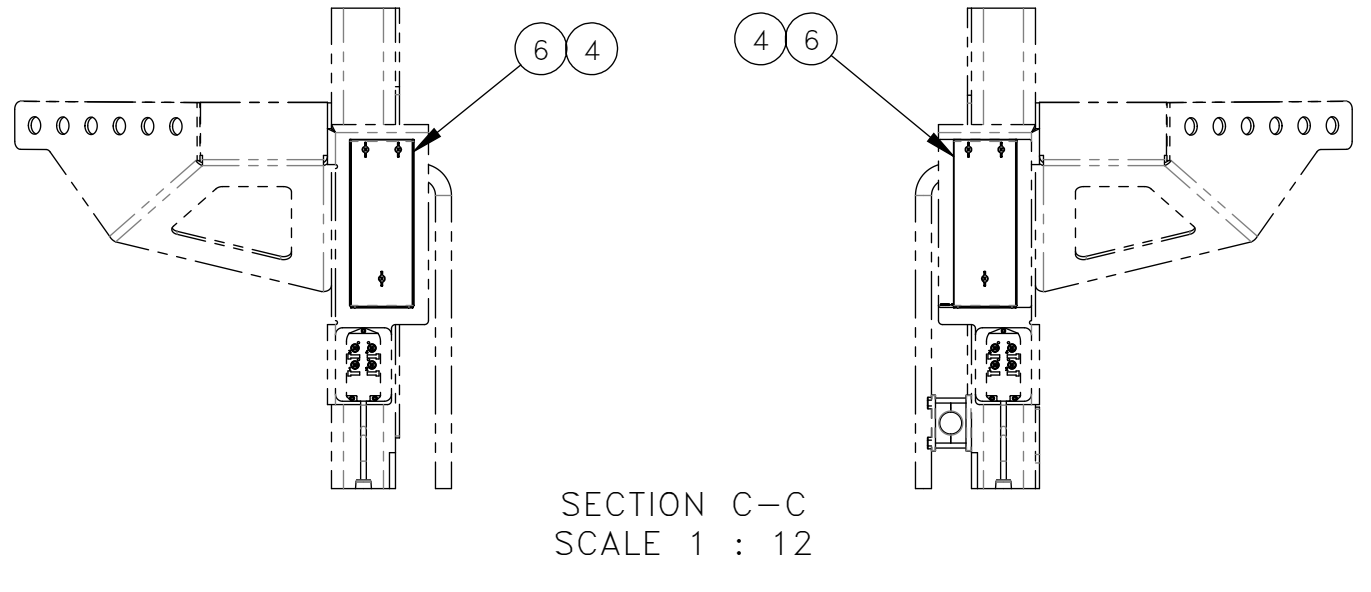
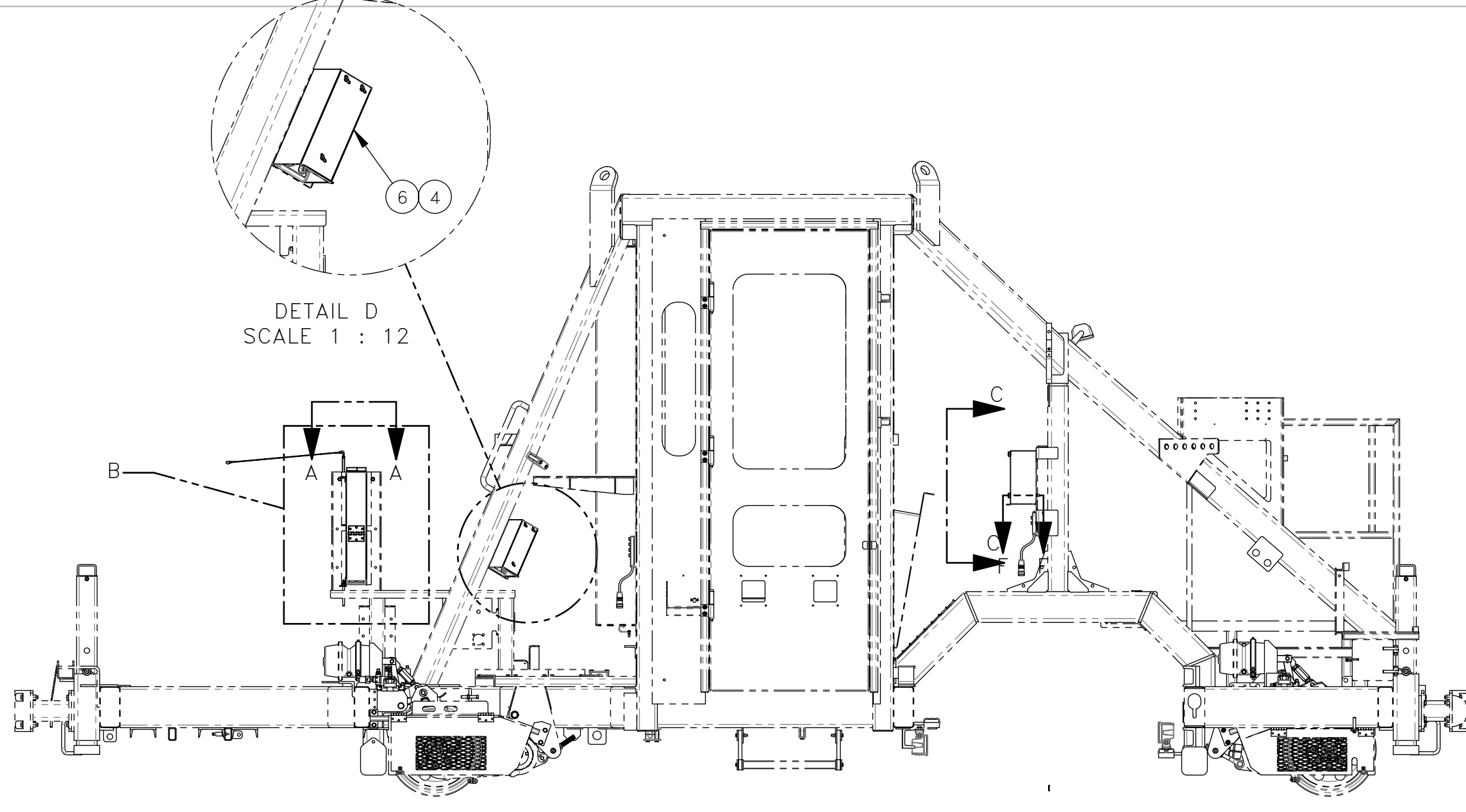


FIG 1.1 DB-2

REV	EN	DESCRIPTION	DATE	DRN
1	00147	NEW RELEASE	6-23	PR

DIMENSION TOLERANCES UNLESS OTHERWISE SPECIFIED

LINEAR	.XX=±.03	.XXX=±.010	KERF ALLOW.
ANGULAR	X'=±1"	X.X'=±.5"	

SURFACE FINISH 125/ NOT TO EXCEED SMOOTH ALL SHARP EDGES CLEAN ALL WELDS

THIS PRINT AND ALL INFORMATION WITHIN BELONGS TO RACINE RAILROAD PRODUCTS

RACINE RAILROAD PRODUCTS
 RACINE, WISCONSIN USA

DESCRIPTION
 INSTRUCTIONS, MURR BLOCK COVER KIT: DASP, SAR

MATERIAL TYPE REFERENCE

USED ON	SCALE	DATE
PR	1:48	04-26-23

DRN	WEIGHT (LBS)	JOB NO	SHEET
PR	0.00		1 OF 2

DWG SIZE	CATALOG	DWG NO
D	A	800410

SW MATERIAL: Material not specified



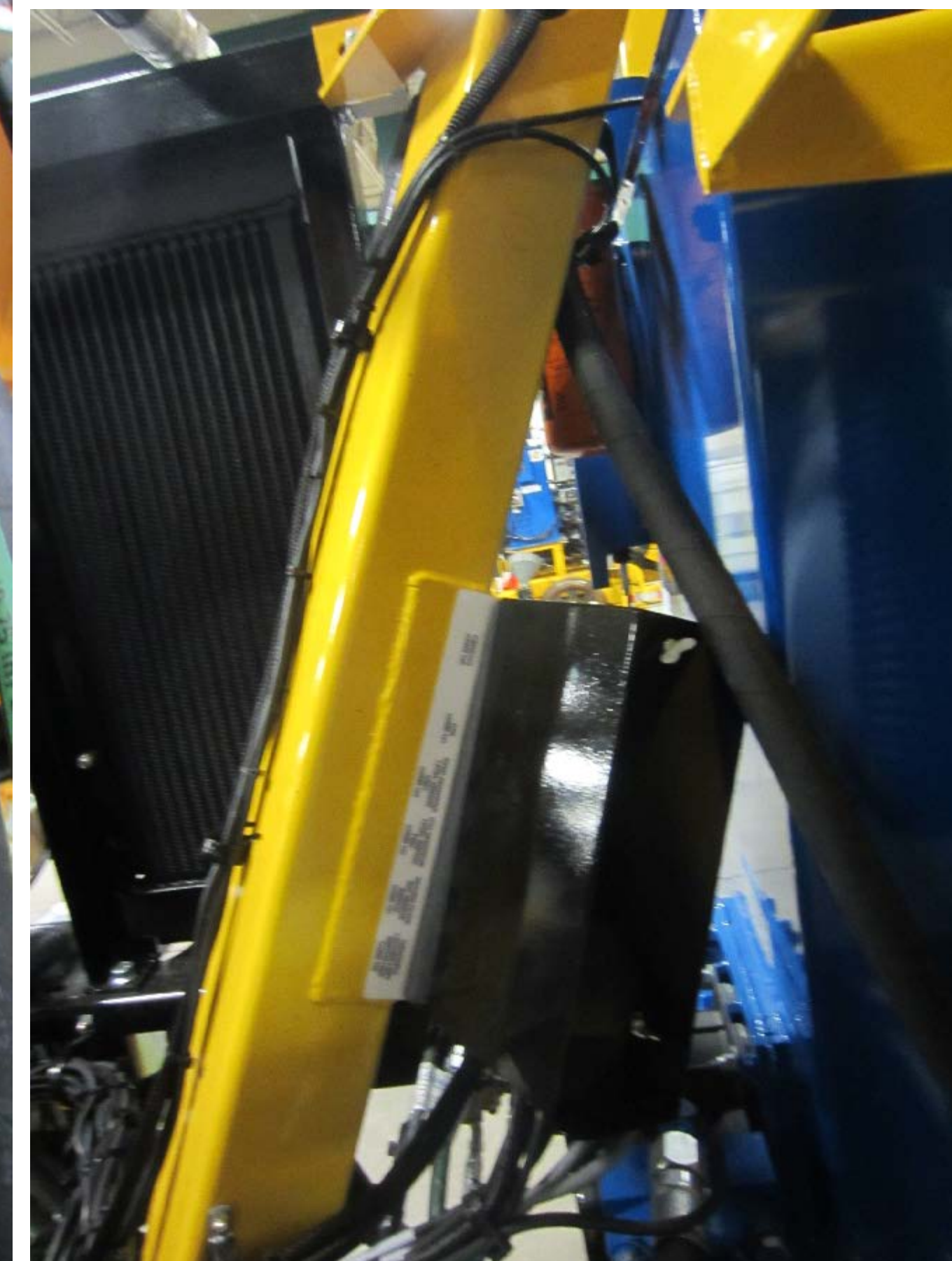
STANDOFF IN PLACE



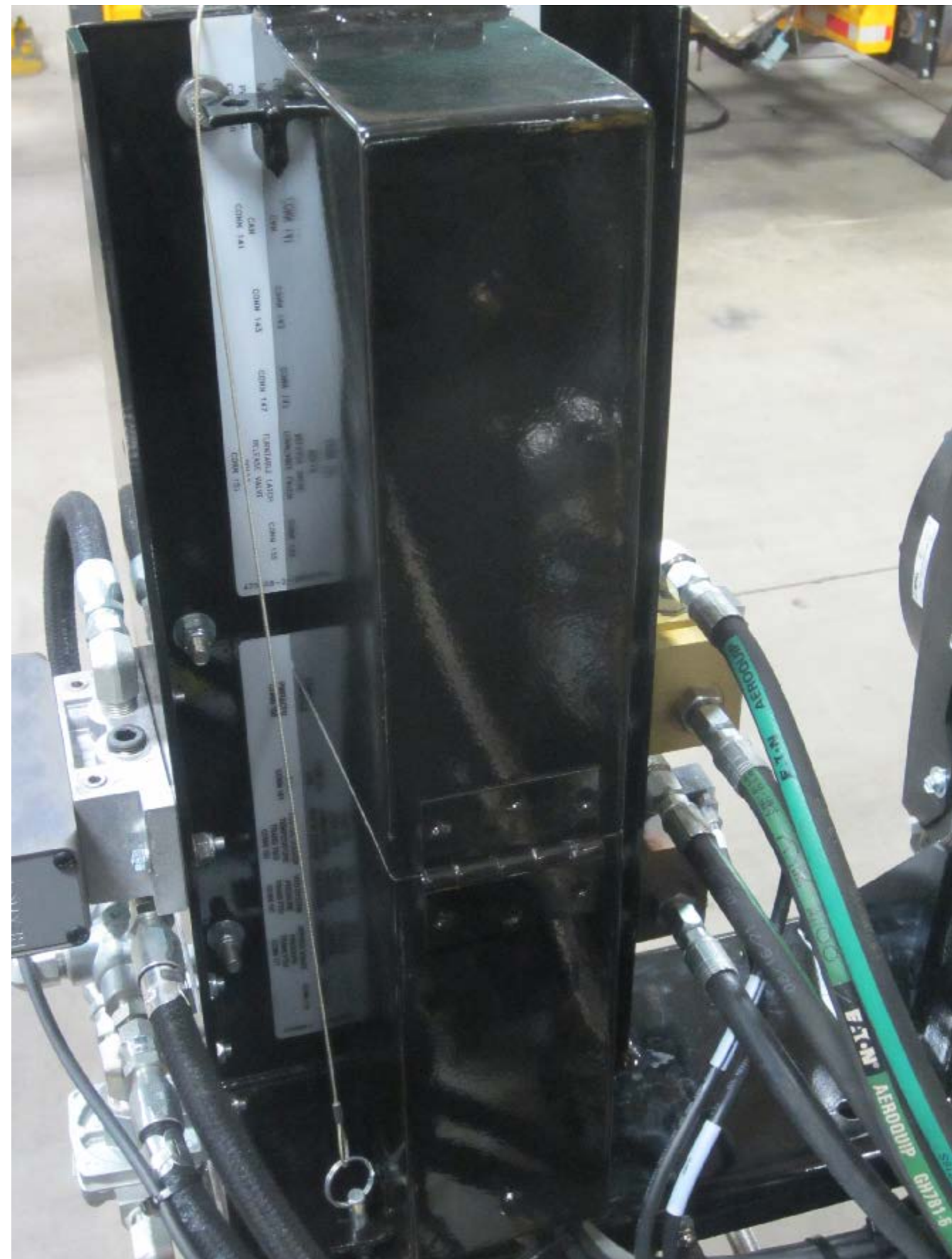
COVER ALIGNED WITH MURR BLOCK
1/4 TURN THUMB LOCK



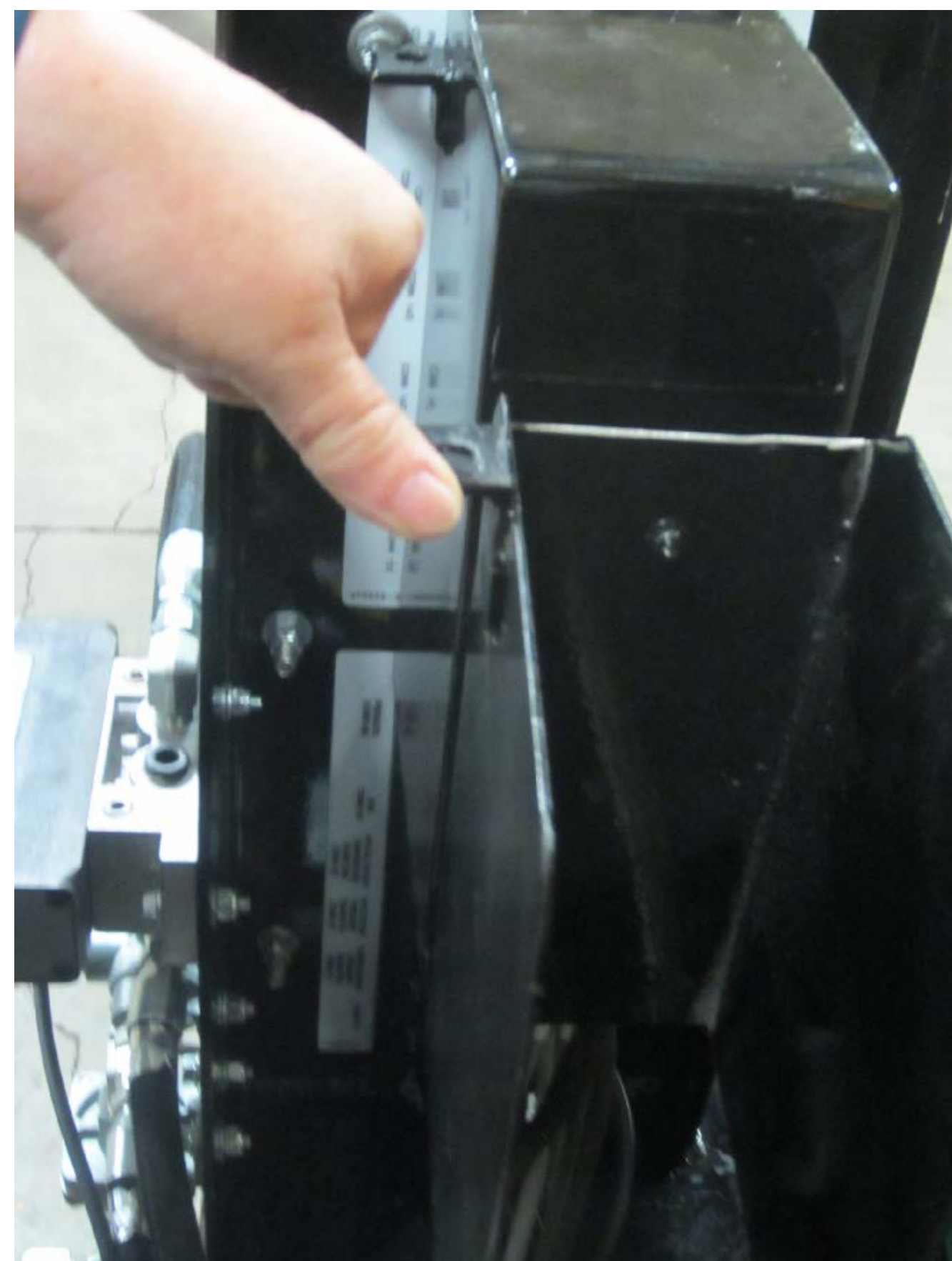
COVER ALIGNED WITH MURR BLOCK
1/4 TURN THUMB LOCK



COVER ALIGNED WITH MURR BLOCK
1/4 TURN THUMB LOCK



COVER CLOSE POSITION



BI-FOLD HALF OPEN POSITION



BI-FOLD LOCKED OPEN POSITION

REV	EN	DESCRIPTION	DATE	DRN
1	00147	NEW RELEASE	6-23	PR
DIMENSION TOLERANCES UNLESS OTHERWISE SPECIFIED				
LINEAR	.XX=±.03	.XXX=±.010	KERF ALLOW.	
ANGULAR	X°=±1°	X.X°=±.5°		
SURFACE FINISH		125	SMOOTH ALL SHARP EDGES CLEAN ALL WELDS	
NOT TO EXCEED				
THIS PRINT AND ALL INFORMATION WITHIN BELONGS TO RACINE RAILROAD PRODUCTS				
RACINE RAILROAD PRODUCTS RACINE, WISCONSIN USA				
DESCRIPTION				
INSTRUCTIONS, MURR BLOCK COVER-KIT- DASP, SAR				
MATERIAL TYPE REFERENCE				
USED ON		SCALE	DATE	
DRN	PR	WEIGHT (LBS)	JOB NO	SHEET
		0.00		2 OF 2
DWG SIZE	CATALOG	DWG NO		
D	A		800410	