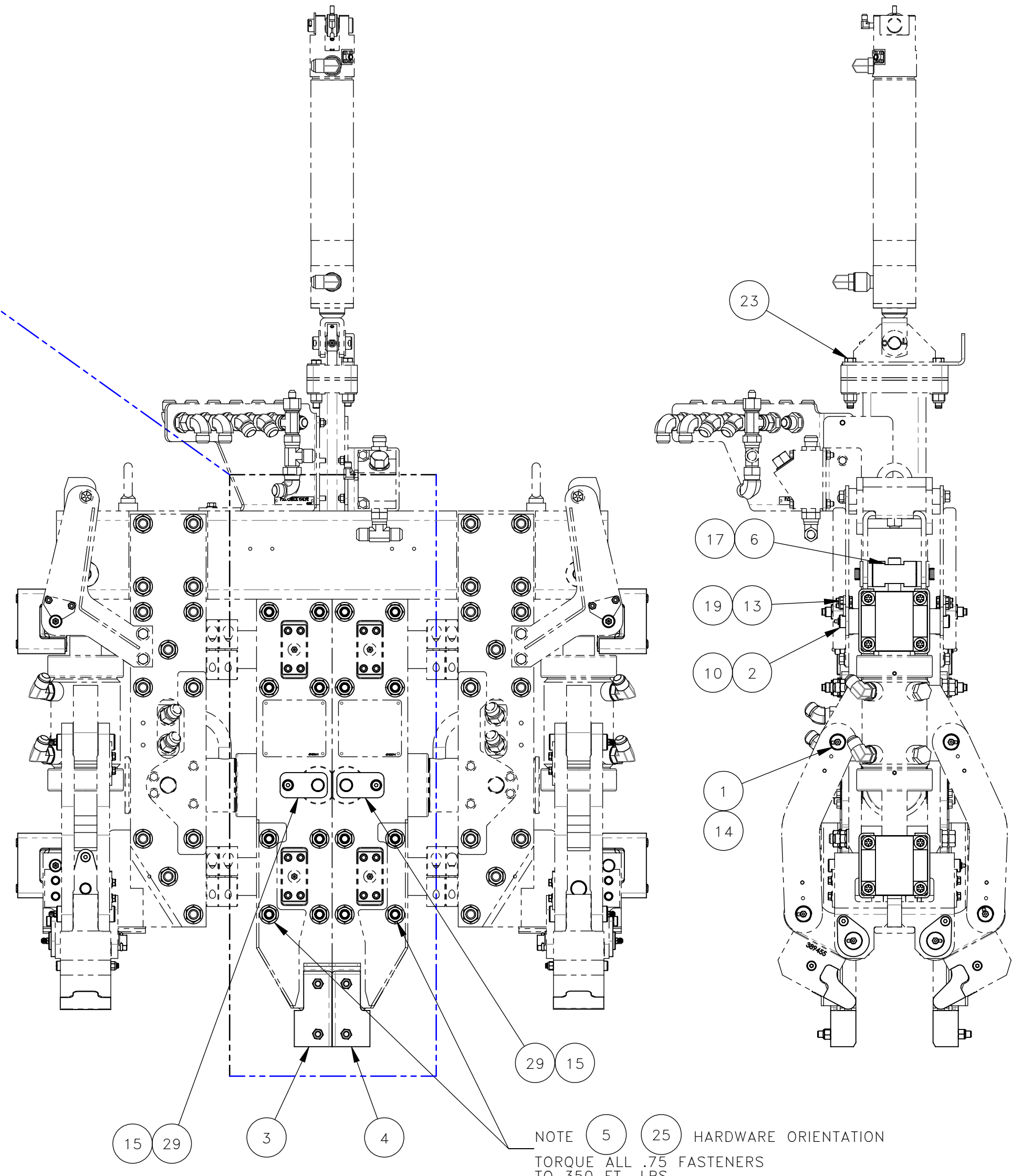
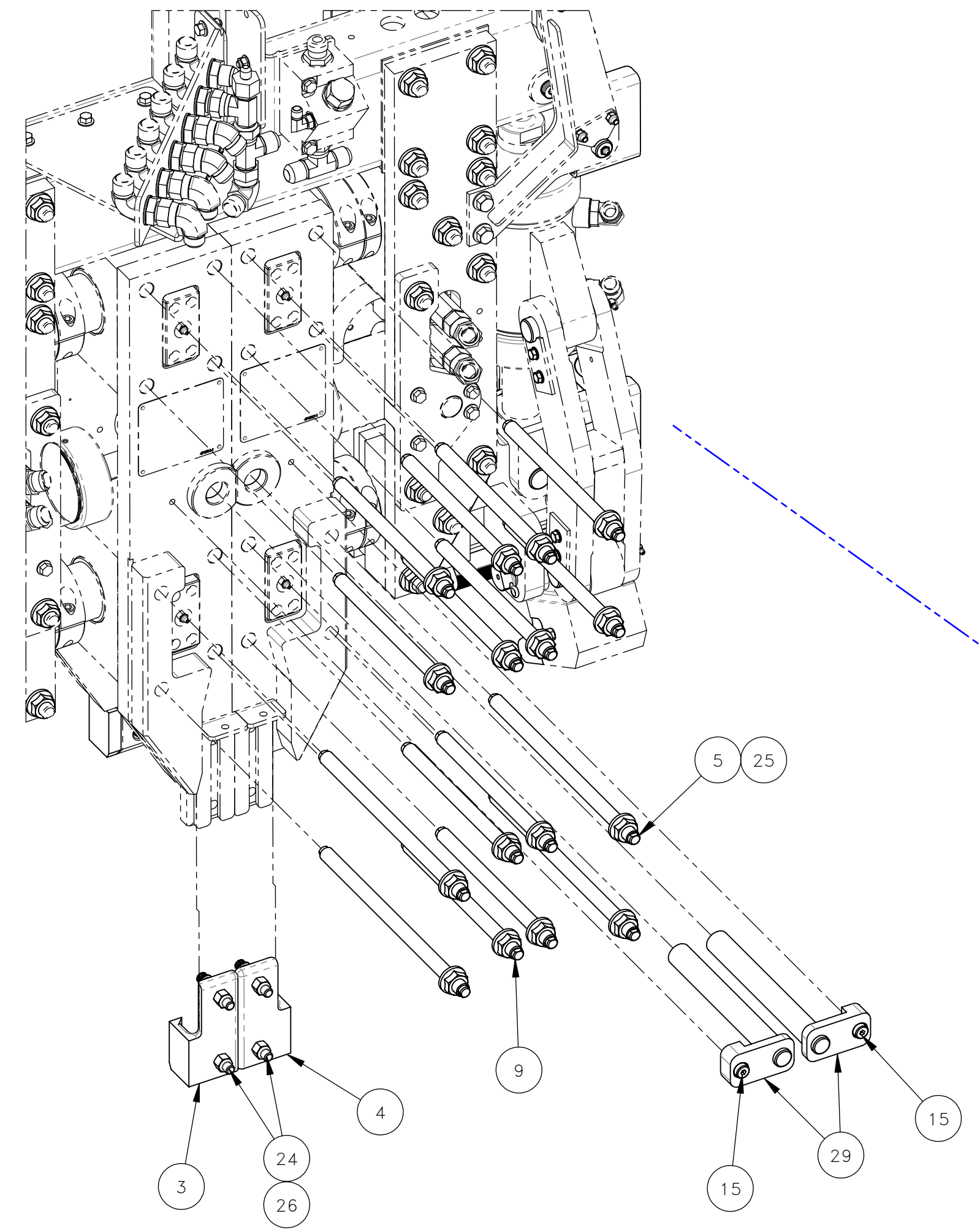
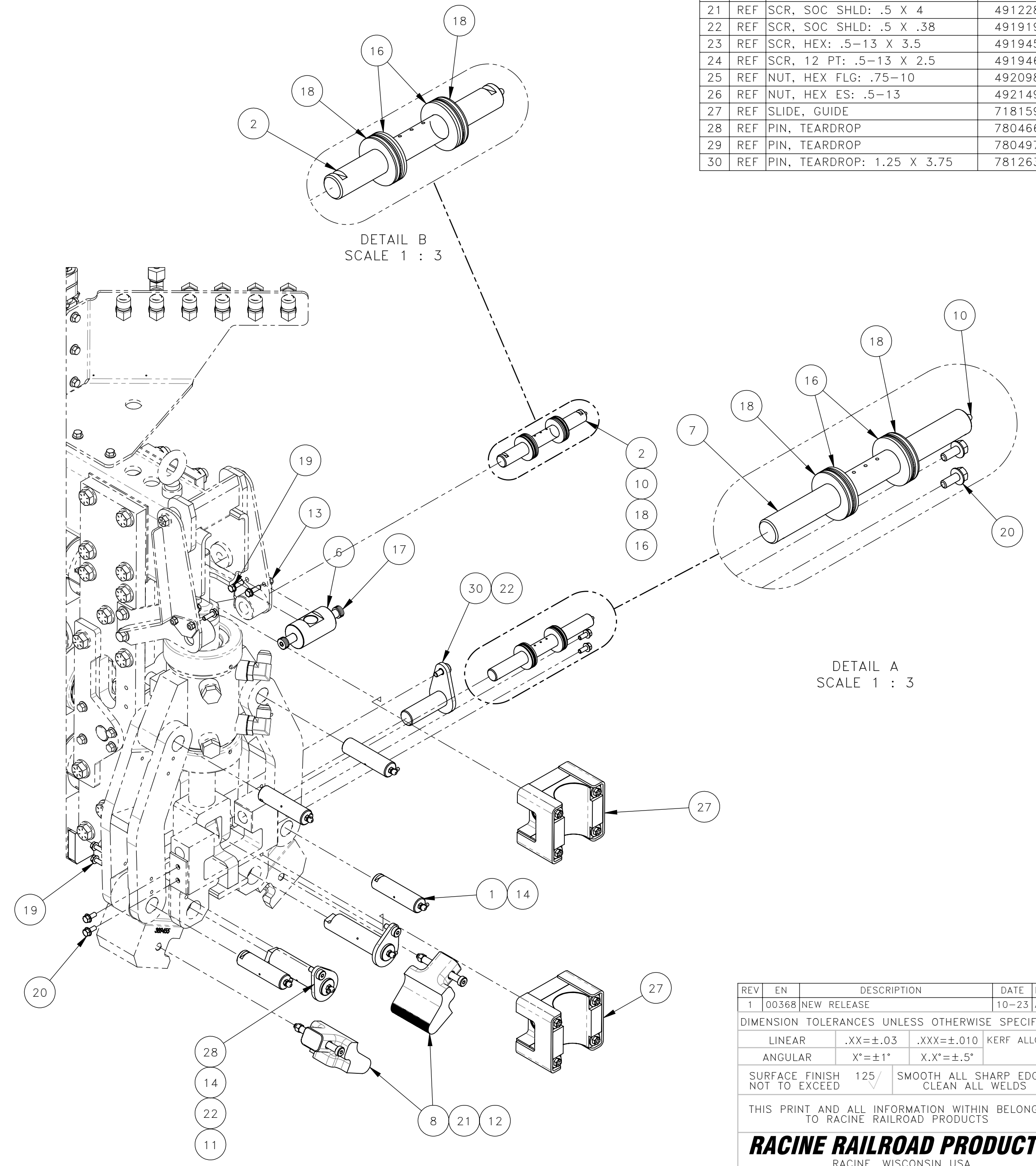


THESE INSTRUCTIONS ARE FOR KIT 793198
 1. POWER OFF MACHINE AND TAG OUT BEFORE PERFORMING CONVERSION.
 2. DISCONNECT & LABEL ANY HOSES/WIRING ON BOTH WORKHEADS.

INSTALLATION:
 1. REPLACE PARTS IN BOM (SEE 793198 FOR PART QUANTITIES).
 2. REASSEMBLE PER TORQUE SPECS (SEE FRONT VIEW).
 3. REATTACH ALL HOSES/WIRING ON BOTH WORK HEADS.
 4. PRIME ANY AIR AND/OR FLUID LINES AS NEEDED.
 5. LUBRICATE BOTH WORKHEADS.



NOTE 5 25 HARDWARE ORIENTATION
 TORQUE ALL .75 FASTENERS
 TO 350 FT.-LBS.



TYPICAL EACH SIDE OF WORKHEAD
 718785/718786

NO.	QTY	DESCRIPTION	PART NO.
1	REF	PIN	314014
2	REF	PIN, ROLLER	314049
3	REF	TOOL, RIGHT	314176
4	REF	TOOL, LEFT	314177
5	REF	STUD	315358
6	REF	TRUNION	317884
7	REF	PIN, SLIDER	317941
8	REF	JAW, RAIL CLAMP	389456
9	REF	STUD	389552
10	REF	FITTING, LUBE: .12 NPT(M)	401987
11	REF	PIN, COTTER: .19 X 2	403904
12	REF	NUT, HEX ES: .38-16	450577
13	REF	NUT, HEX ES: .31-18	450578
14	REF	FITTING, LUBE: .12 NPT(M) 90°	451214
15	REF	SCR, SOC SHLD: .5 X 1	453727
16	REF	BRG, THRUST: 1 ID BRONZE	462572
17	REF	SCR, SOC SHLD: .62 X 1	471418
18	REF	WASHER, BELLEVILLE: 1	472940
19	REF	SCR, HEX FLG: .31-18 X 1	491043
20	REF	SCR, HEX FLG: .31-18 X .75	491045
21	REF	SCR, SOC SHLD: .5 X 4	491228
22	REF	SCR, SOC SHLD: .5 X .38	491919
23	REF	SCR, HEX: .5-13 X 3.5	491945
24	REF	SCR, 12 PT: .5-13 X 2.5	491946
25	REF	NUT, HEX FLG: .75-10	492098
26	REF	NUT, HEX ES: .5-13	492149
27	REF	SLIDE, GUIDE	718159
28	REF	PIN, TEARDROP	780466
29	REF	PIN, TEARDROP	780497
30	REF	PIN, TEARDROP: 1.25 X 3.75	781263

REV	EN	DESCRIPTION	DATE	DRN
1	00368	NEW RELEASE	10-23	ASM

DIMENSION TOLERANCES UNLESS OTHERWISE SPECIFIED

LINEAR	.XX=±.03	.XXX=±.010	KERF ALLOW.
ANGULAR	X'=±1°	X.X'=±.5°	

SURFACE FINISH 125/ NOT TO EXCEED SMOOTH ALL SHARP EDGES CLEAN ALL WELDS

THIS PRINT AND ALL INFORMATION WITHIN BELONGS TO RACINE RAILROAD PRODUCTS

RACINE RAILROAD PRODUCTS
 RACINE, WISCONSIN USA

DESCRIPTION
 INSTRUCTIONS, 718785/718786
 REBUILD KIT

MATERIAL TYPE
 SEE BOM

USED ON	793198	SCALE	1:6	DATE	10-13-23
DRN	ASM	WEIGHT (LBS)	JOB NO	RD190005	SHEET
DWG SIZE	D	CATALOG	A	DWG NO	800417