

NO.	QTY	DESCRIPTION	PART NO.
1	REF	CLAMP, PLATE	720484
2	REF	PLATE, PUSH	324366

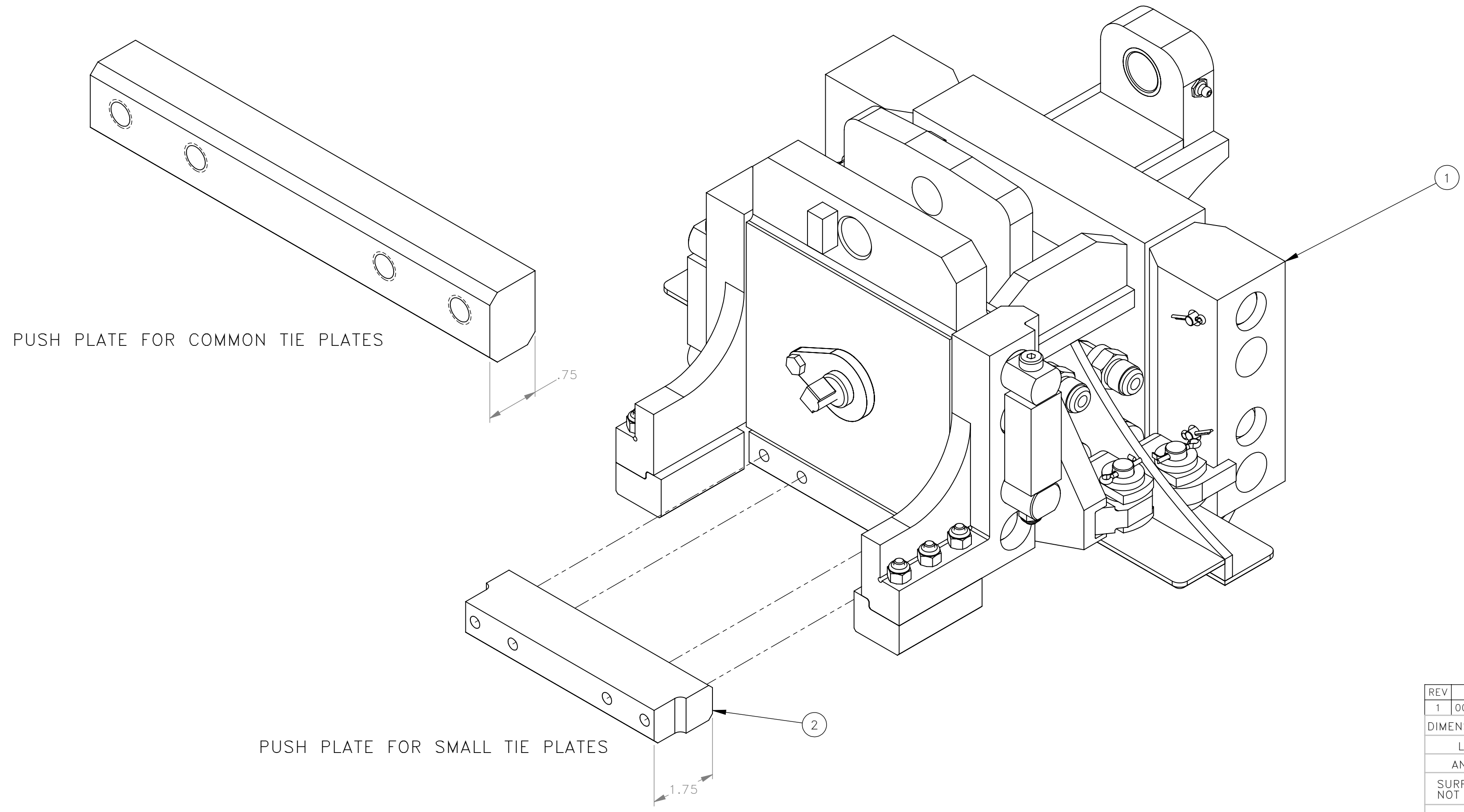
THESE INSTRUCTIONS ARE FOR KIT 793203(2 KITS PER WORKHEAD)

REMOVAL:

1. POWER OFF MACHINE AND TAG OUT BEFORE PERFORMING CONVERSION.
2. REMOVE PLATE, PUSH COMPONENT MEASURING .75" THICK.

INSTALLATION:

1. REASSEMBLE PLATE CLAMP FOR USE WITH SMALL 9 X 6.5 TIE PLATE USING NEW PLATE, PUSH MEASURING 1.75" THICK (ITEM 2).
2. INSTALL BOLTS WITH LOCTITE.
3. LUBRICATE ALL CLAMP ASSEMBLIES.
4. POWER ON MACHINE.



2 KITS REQUIRED PER WORKHEAD

USED ON:
720136 & 720484 PLATE CLAMP MECHANISMS

FOR USE WITH 931587 & 932587 PLATE CENTERING ATPI MACHINES

NOTE:
FOR USE WITH SMALL 9 X 6.5 TIE PLATE

REV	EN	DESCRIPTION	DATE	DRN
1	00392	NEW RELEASE	11-23	PMK
DIMENSION TOLERANCES UNLESS OTHERWISE SPECIFIED				
LINEAR	.XX=±.03	.XXX=±.010	KERF ALLOW.	
ANGULAR	X°=±1°	X.X°=±.5°		
SURFACE FINISH		125/	SMOOTH ALL SHARP EDGES	
NOT TO EXCEED			CLEAN ALL WELDS	
THIS PRINT AND ALL INFORMATION WITHIN BELONGS TO RACINE RAILROAD PRODUCTS				
RACINE RAILROAD PRODUCTS				
RACINE, WISCONSIN USA				
DESCRIPTION				
INSTRUCTIONS, SMALL PLATE KIT: 93X587				
MATERIAL TYPE				
REFERENCE				
USED ON		SCALE	DATE	
793203		8:1	11-10-23	
DRN	WEIGHT (LBS)	JOB NO	SHEET	
PMK		RD150003	1 OF 1	
DWG SIZE	CATALOG	DWG NO		
C	A	800419		