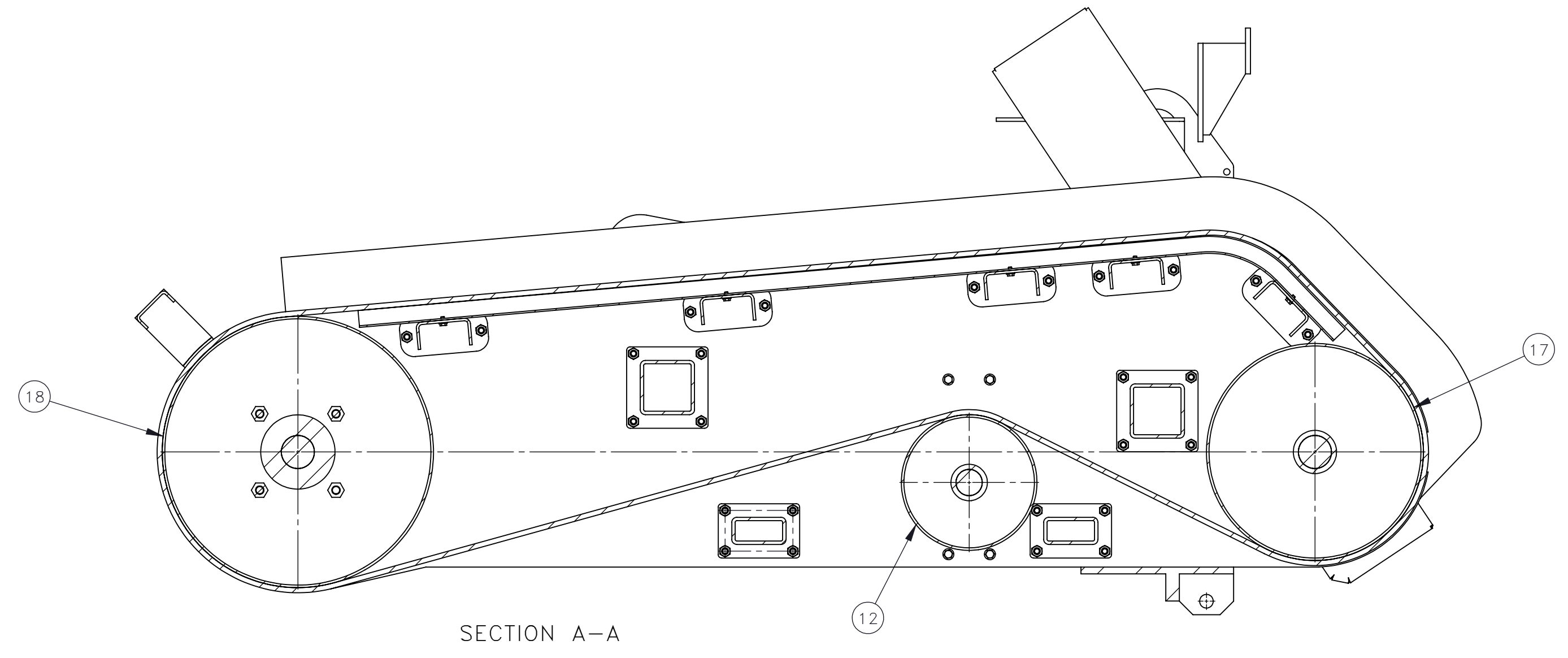
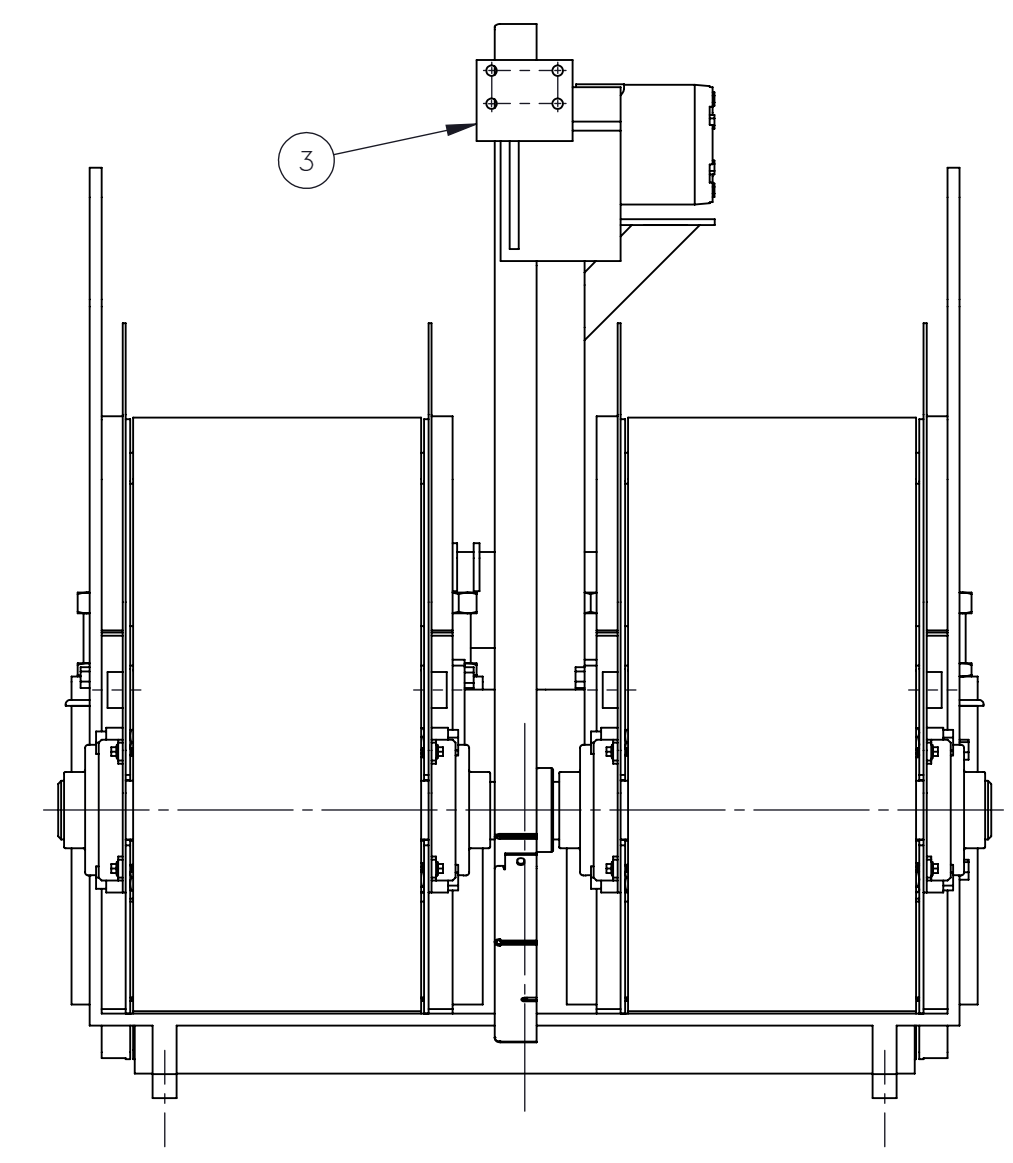
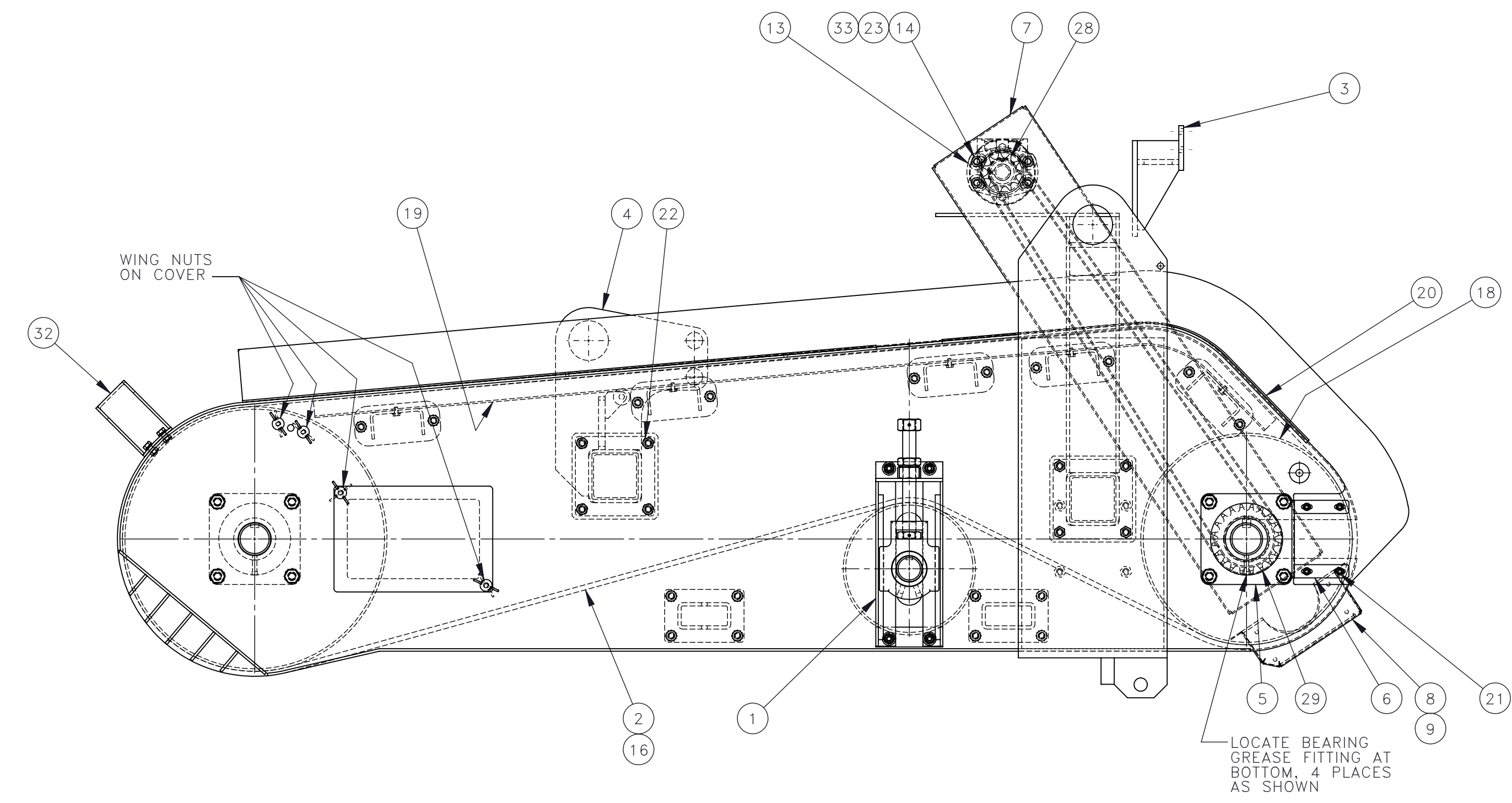


BOTTOM VIEW



SECTION A-A

FOR SERVICE ONLY

NO.	QTY.	DESCRIPTION	PART NO.
1	4	BEARING, TAKE UP	469178
2	2	BELT, CONVEYOR: 12 X 214	465713
3	1	BRACKET, CYLINDER	778407
4	1	BRACKET, LIFT CYLINDER	778376
5	4	BRG. FLANGE: 2.44 ID	467806
6	4	GUARD, BEARING	779318
7	2	GUARD, CHAIN	471758
8	2	GUARD, CHAIN	471759
9	1	GUARD, CHAIN	471747
10	2	GUARD, LEFT FLANGE	468613
11	2	GUARD, RIGHT FLANGE	469928
12	2	PULLEY, TAKE UP	
13	1	MOTOR, HYDR: 22.2 CIR	465714
14	4	NUT, HEX ES: .5-13 HVY	404158
15	1	NUT, HEX FLG: .25-20	491543
16	1	PIN, BELT LACING	469940
17	2	PULLEY, DRIVE	468974
18	2	PULLEY, MAGNETIC HEAD	467127
19	2	RAIL, MAGNETIC TAKEOFF	468476
20	1	RAIL, TAKEOFF	467861
21	32	SCR, HEX FLG: .25-20 X .5	491539
22	8	SCR, HEX: .5-13 X 1.5	400744
23	4	SCR, HEX: .5-13 X 2	400745
24	16	SCR, HEX: .5-13 X 2.5	491663
25	8	SCR, HEX: 1/2-13 X 1	400751
26	1	SCR, SOC FLT: .25-20 X 1 SS	491933
27	1	SHAFT, 2.44 DIA DRIVE PULLEY	471513
28	2	SPROCKET, #60 11 TOOTH	465712
29	1	SPROCKET, #60 20 TOOTH	465711
30	1	STIFFENER, FRAME: LEFT	468865
31	1	STIFFENER, RIGHT FRAME	469929
32	2	STRAP, DRUM	469224
33	8	WASHER, FLT: .5	491472

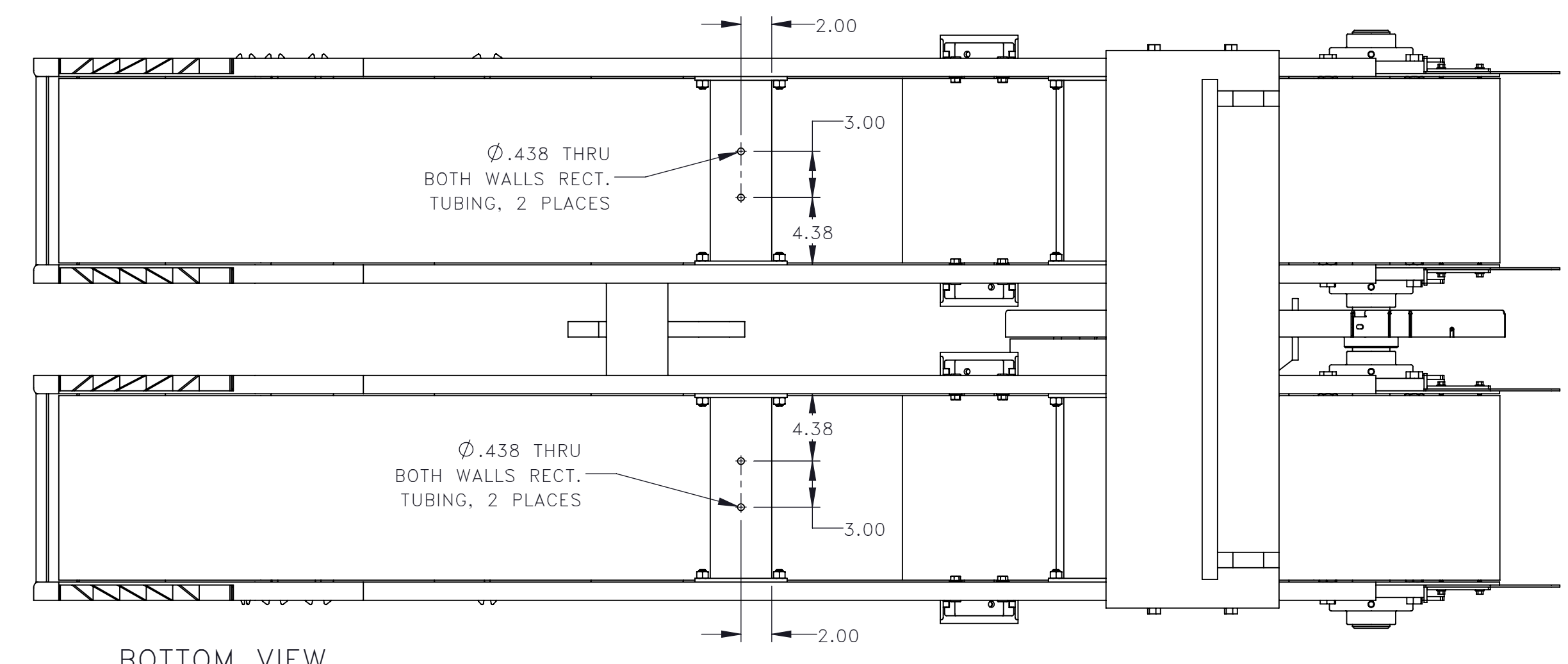
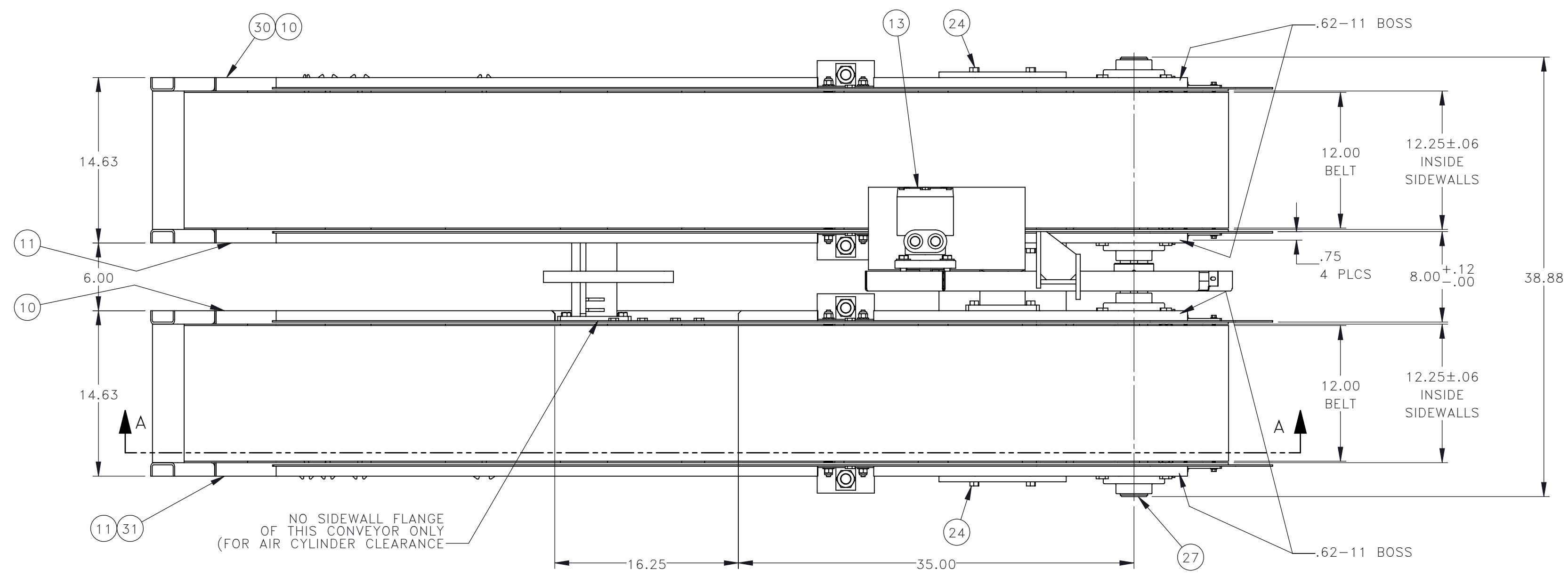
NOTE: BALLOONS ARE HAND ENTERED

REV	EN	DESCRIPTION	DATE	DRN
16	2010	REDRAWN IN SOLIDWORKS	9-13	MJW
17	2086	ADDED 469940	6-14	MSO
18	2141	ADD 471513, 491933 (28), ECR2141	3-15	MSO
19	2231	ADD 471747, 471758, 471759, ADD 491543, ECR3431	3-16	MSO
20	2257	UPDATED VIEW, ADDED SHEET 2	7-16	MSO

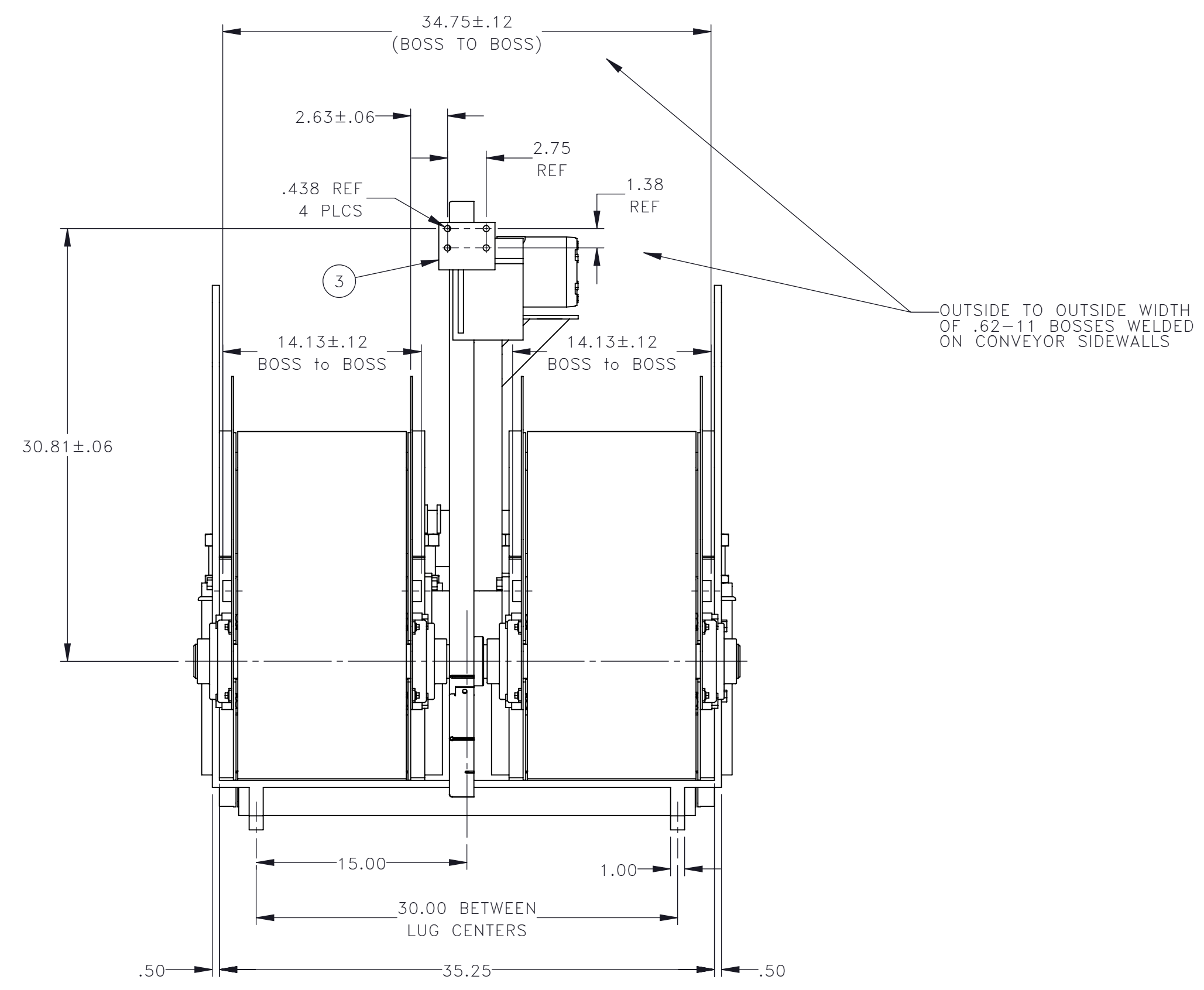
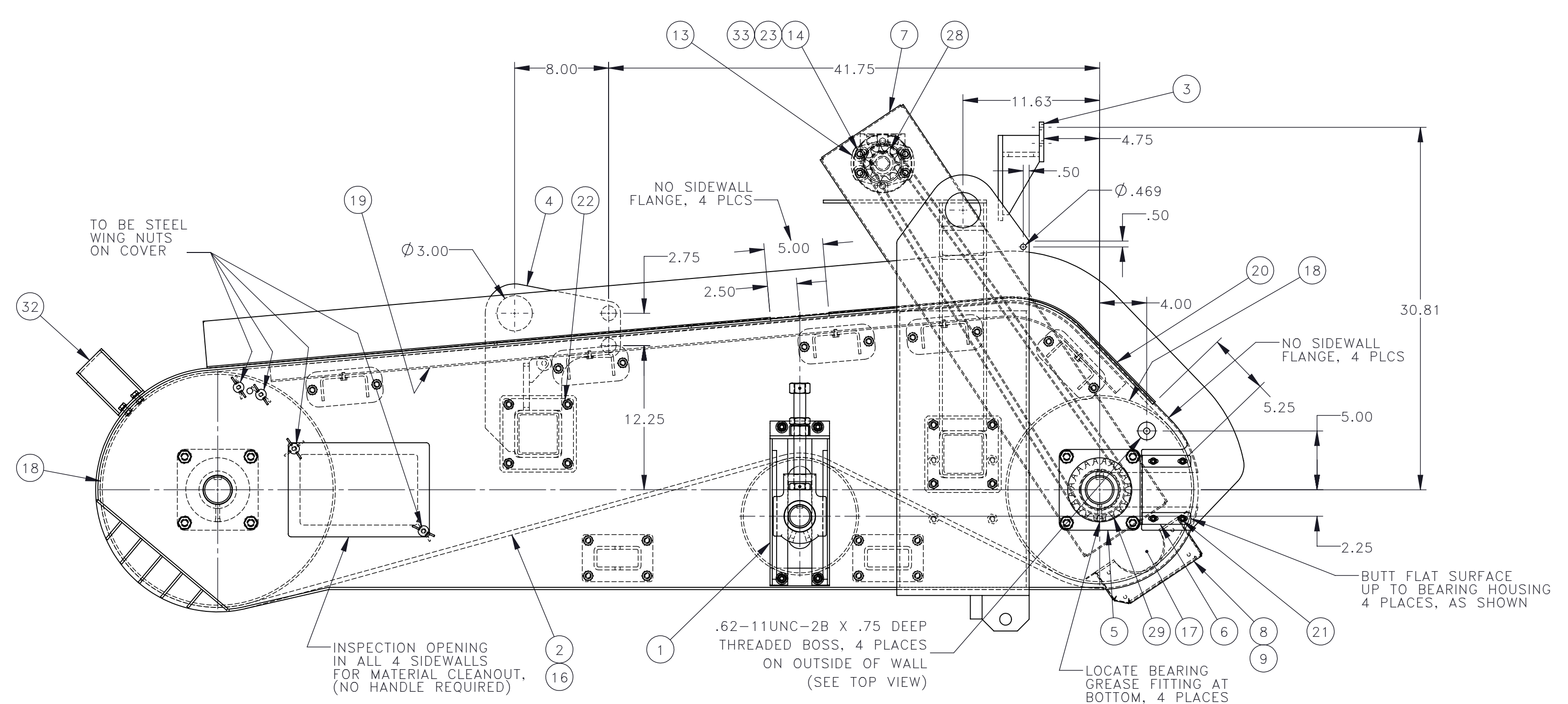
DIMENSION TOLERANCES UNLESS OTHERWISE SPECIFIED
 LINEAR .XX=±.03 .XXX=±.010
 ANGULAR X'=±1° X.X'=±.5°

SURFACE FINISH 125/ SMOOTH ALL SHARP EDGES NOT TO EXCEED CLEAN ALL WELDS
 THIS PRINT AND ALL INFORMATION WITHIN BELONGS TO RACINE RAILROAD PRODUCTS
RACINE RAILROAD PRODUCTS
 RACINE, WISCONSIN USA

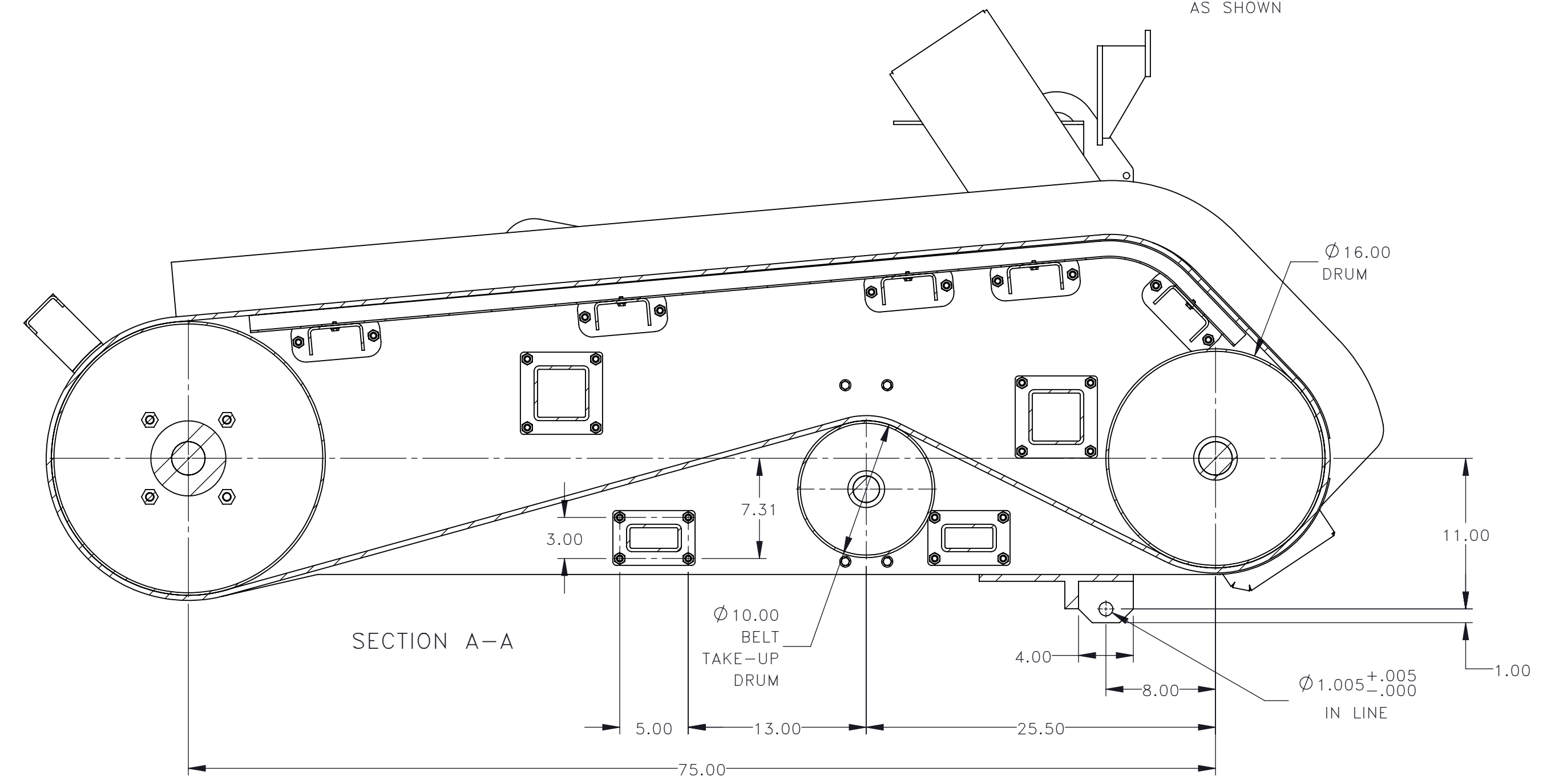
DESCRIPTION		CONVEYOR	
MATERIAL		SEE BOM	
USED ON	714153	SCALE	DATE
		1:8	09-10-13
DRN	MJW	CHK	APP
EXP NO		JOB NO	SHEET
		RD040192	1 OF 2
		DWG NO	465647



BOTTOM VIEW



OUTSIDE TO OUTSIDE WIDTH OF .62-11 BOSSES WELDED ON CONVEYOR SIDEWALLS



SECTION A-A

- 22.2 CIR HYDRAULIC MOTOR
- #60, 11 TOOTH MOTOR ROLLER CHAIN SPROCKET
- #60, 20 TOOTH DRUM ROLLER CHAIN SPROCKET
- #60, 104 LINK ROLLER CHAIN W/ CONNECTING LINK
- 3 PLY, .38 THICK, 12 WIDE, 214 LONG DOUBLE VEE GROOVE RUBBER BELTS
- FLEXCO #550NCSS STAINLESS STEEL BELT LACING FLUSH TO BELT EDGE
- BELT LACING TO BE RECESSED FOR FLUSH RIDE
- MAGNETIC PRODUCTS #MRSR-20-B REV F
- "STRONG MAGNET" WARNING DECAL INCLUDED

REV	EN	DESCRIPTION	DATE	DRN
16	2010	REDRAWN IN SOLIDWORKS	9-13	MJW
17	2086	ADDED 469940	6-14	MSO
18	2141	ADD 471513, 491933 (28), ECR2141	3-15	MSO
19	2231	ADD 471747, 471758, 471759, ADD 491543, ECR3431	3-16	MSO
20	2257	UPDATED VIEW, ADDED SHEET 2	7-16	MSO

DIMENSION TOLERANCES UNLESS OTHERWISE SPECIFIED

LINEAR	.XX=±.03	.XXX=±.010
ANGULAR	X' = ±1'	X.X' = ±.5'

SURFACE FINISH 125/ SMOOTH ALL SHARP EDGES NOT TO EXCEED

THIS PRINT AND ALL INFORMATION WITHIN BELONGS TO RACINE RAILROAD PRODUCTS

RACINE RAILROAD PRODUCTS
RACINE, WISCONSIN USA

DESCRIPTION
CONVEYOR

MATERIAL
SEE BOM

USED ON	714153	SCALE	1:8	DATE	09-10-13
DRN	MJW	CHK	APP	JOB NO	RDO40192
EXP NO				SHEET	2 OF 2
				DWG NO	465647